

EnGauge DEI

A real-time platform to measure, analyze, and manage Diversity, Equity, and Inclusion activities on campus

Complete your DEI toolset by adding a quantitative view of student engagement across your diverse cohorts and communities. With easy-to-understand counts of when, where, and for how long students are engaging with campus facilities and events, the EnGauge platform provides an accurate baseline to measure campus engagement across all student cohorts; including those who identify outside of the majority. The EnGauge platform also identifies leading indicators of the unique student behaviors, aggregated by cohort, which predict those groups trending toward success and those groups at a higher risk of dropping out.

The World's First DEI Real-Time Analytics Tool

Using large scale frictionless data aggregation techniques and advanced machine-learning algorithms, the EnGauge platform identifies the unique behaviors on campus best predictive of success.

By benchmarking student engagement counts against definable cohorts and the entirety of the campus population, differences can be quickly identified, measured, and addressed. Understanding individual student behavior as well as cohort engagement can help to identify equity and inclusion issues.

Analyze Impact

The DEI EnGauge platform aggregates data from the widest variety of existing campus data sources and provides a valuable real-time dashboard to design, manage, measure and communicate programs, initiatives, and impacts. The dashboard can be used to view of the impact that each DEI initiative has on the activities and behaviors associated with matriculation, graduation, and satisfaction.

”

“Measuring the impact of the various Diversity, Equity, and Inclusion programs and resources on campus is a critical part of fostering an educational community where all members feel wanted, respected, supported, and encouraged to make the most out of their time with us. Degree Analytics has shone a light on student behaviors in real time which allow us to identify leading indicators for success.”

Dr. F. Javier Cevallos
President
Framingham State University



Identification

The DEI EnGauge platform supports the creation, analysis and reporting of multiple and customized groups of students on campus, all while protecting student privacy by masking personal identifiable information and only collecting, analyzing and presenting data in aggregate form.



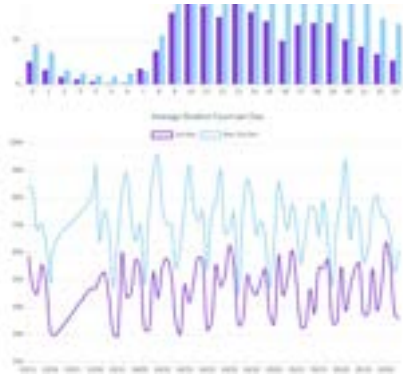
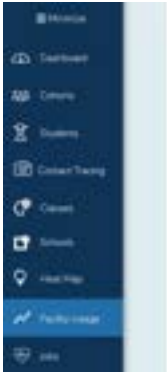
Quantification

The DEI EnGauge platform allows for real-time and continuous tracking of both the number of students present at each campus location and the amount of time they spend there. Locations include classrooms as well as other facilities on campus (faculty office hours, teaching assistant office hours, study sessions, library, learning labs, academic counseling and advising sessions, recreation centers, dining facilities). Real-time easy-to-understand analytics enables establishment of baseline DEI measures of equity and inclusion.

Benchmarking

The ability to establish and view multiple cohorts across times allows for the establishment of data driven analysis and reporting and to quickly, easily and automatically compare specific groups' behavior against the behaviors of the campus population as a whole and other definable groups. By benchmarking the DEI cohorts' behaviors, engagement differences can be quickly identified, measured, and addressed.



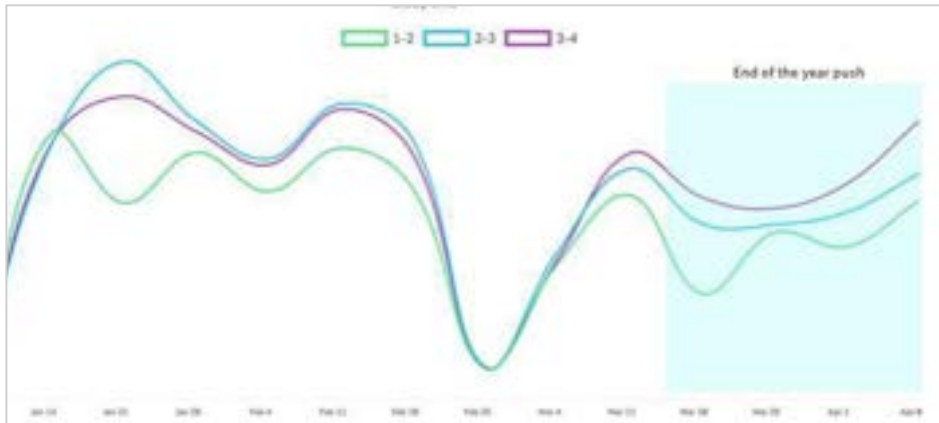


Reporting

The EnGauge platform provides a valuable real-time dashboard and comprehensive reports to manage and communicate DEI programs and initiatives to campus leadership and other key stakeholders.

Evaluation

Using real-time and frictionless data collection, campuses can quickly gauge the impact of projects and initiatives on the desired behaviors they intended to support, facilitate, and encourage. For example, if the university initiates a nudge program to encourage class attendance for first generation freshman, the platform can track the success of that program in real-time, while also determining how the behaviors of class attendance are correlated to overall engagement, matriculation, and graduation goals. Campuses can quickly view the impact of every DEI project and initiative on the desired behaviors that support equity and inclusion and lead to student success.



12%

Improvement in attendance after intervention

4%

Improvement in first year retention

\$560k

Impact on tuition revenue

Implementation

The EnGauge platform mines data from existing campus systems and sources and thus requires minimal implementation cost, effort, training and adoption management. Real-time dashboard and reporting are established in under a month with little implementation support required from the institutional partner.

About Degree Analytics

Powered by a diverse team of data scientists, behavioral analysts, technologists, and educators, Degree Analytics is a SIAA CODiE and EDTECH Award winning behavioral analytics company serving educational institutions. Our patented EnGauge platform focuses on collecting, analyzing, and reporting real-time student engagement metrics that are most closely linked with student success. Currently supporting over 500,000 students, our predictive analytics platform specializes in turning behavioral data into valuable action on campuses around the world.

