

# SKYLIFT MD6000 E-SERIES

## Improved Safety and Sustainability With All the Power of the Skylift MD6000

You're too busy for downtime. You need powerful backyard equipment that performs reliably and helps you do your job more efficiently.

You also want equipment that helps keep your workers safe and pushes the boundaries of sustainable innovation.

We understand, which is why we have changed the game.

## Introducing the First Battery-Powered Backyard Machine

The first of its kind in the market, the Skylift MD6000 E-Series offers the same durable performance as the MD6000 but has both electric and diesel modes of operation.



## E-Series Benefits

The E-Series was designed to deliver safety, sustainability, convenience, efficiency and power.



### Same MD6000 Power & Performance:

Electric doesn't mean reduced power. The MD6000 E-Series is just as powerful as its diesel counterpart.



**Same Small Footprint & Size:** This is your go-to machine for tight spaces — with its 35" retracted track width it's small enough to fit through a standard gate. Its size is nearly identical to the MD6000, with only a small increase in weight.



**All-Day Operation:** Get a full day of continuous operation on a single battery charge, then recharge while running in diesel mode or by using a conventional outlet for uninterrupted, all-day operation.



**Additional Efficiencies:** Use the nearly silent electric mode to extend work hours in residential areas. You can also use our app to easily monitor battery life and more.



**Less Noise for Increased Jobsite Safety:** Improve communication between workers and eliminate disturbances caused by noise pollution.



**Zero Carbon Emissions:** Produce zero emissions in electric mode to decrease your carbon footprint and diesel usage.



**Large Lift Capacity:** The MD6000 E-Series has the largest lift capacity of any backyard easement machine.



**Seamless Parts, Service & Operation:** The MD6000 E-Series operates identically to its diesel counterpart, which simplifies training, as well as technical and parts service.



**Extended Warranties:** 5-year warranty on the battery system, 3-year warranty on the generator controller, 2-year warranty on most electrical components and a 24-month warranty on the generator/motor.



# Just How Quiet Is the E-Series?

## MD6000 E-Series Decibel Levels

Low Speed Setting at Idle:

**56db**

High Speed Setting at Idle:

**69db**

## MD6000 Diesel Decibel Levels

Low Speed Setting at Idle:

**75db**

High Speed Setting at Idle:

**85db**

## OSHA notes the following decibal levels



Average Ambient  
Outdoor Decibel Level:

**55db**



Normal  
Conversation:

**60db**



Classroom  
Chatter:

**70db**

\* Decibel level readings from 10' away



# SKYLIFT

## Specifications

<b>Weight:</b>	12,590 lbs. (only 550 lbs. heavier than the MD6000)
<b>Length:</b>	Chassis 14' 8", Overall 19'
<b>Height:</b>	7'
<b>Width:</b>	35" Closed, 50" Open
<b>Tracks:</b>	90" Rubber
<b>Winch:</b>	6,000 lbs.
<b>Sheave Height:</b>	40' / 48'
<b>Side Reach:</b>	35'
<b>Digging Radius:</b>	24'
<b>Insulation:</b>	46kv Category C per ANSI 92.2

**See pages 3–7 for a full list of specifications.**

## Contact Us With Questions or to Request Pricing



440.960.2100



info@skyliftus.com



skyliftus.com/contact-us

# MD6000 E-Series

## Specifications



440-960-2100 | SKYLIFTUS.COM

### MACHINE SPECIFICATIONS

\*E-Series specifications are virtually identical to standard diesel unit. Any differences are noted in green.

WEIGHT:	<b>12,590 lbs.</b>
LENGTH:	CHASSIS 14'8" OVERALL 19'
HEIGHT:	7'
WIDTH:	35" CLOSED – 50" OPEN
BASE:	HIGH STRENGTH STEEL CONSTRUCTION
DRIVE:	TWO SPEED PLANETARY REDUCTION
TRACKS:	90" RUBBER
TRACK ALARMS:	AUDIBLE ALARM ON RETRACT
TILT ALARM:	DIGITAL & AUDIBLE – SIDE TO SIDE – FRONT TO BACK
ENGINE:	25 HP KUBOTA DIESEL - TIER 4 COMPLIANT
FUEL CAPACITY:	10 GALLON
HYDRAULIC OIL CAPACITY:	25 GALLON
PUMP:	16 GPM FIXED DISPLACEMENT PISTON PUMP
OPERATING PSI:	3,000 PSI
CONTROLS:	FULL PRESSURE
WINCH:	6,000 LBS.
AUGER DRIVE:	5,800 FT. LBS. OF TORQUE
<b>E-Series VOLTAGE:</b>	<b>51v DC</b>
<b>E-Series Capacity:</b>	<b>300 AH</b>
<b>E-Series MOTOR:</b>	<b>20 KW</b>
PAD MOUNT TRANSFORMER DECK:	INTEGRATED / 3,000 LBS.
SHEAVE HEIGHT:	40' / 48'
WORKING HEIGHT:	44'
SIDE REACH:	35'
DIGGING RADIUS:	MAX 24' / MIN 13'5"
BOOM ASSEMBLY:	3 SECTION INSULATED ALL HYDRAULIC EXTENSION
LIFT CYLINDER:	6" BORE LIFT CYLINDER
BOOM ANGLES:	-5 DEGREES / +75 DEGREES
INSULATION:	46KV CATEGORY C PER ANSI 92.2
OUTRIGGERS:	HYBRID – RADIAL TYPE
OUTRIGGER SAFETY:	OUTRIGGER INTERLOCK SYSTEM
OUTRIGGER SPREAD:	REAR 15' / FRONT 12' / FRONT TO REAR 14'
AUXILIARY POWER:	HYDRAULIC TOOL CIRCUIT AT GROUND, 2 PLACES
WORK LIGHTS:	SET OF TWO
GROUND PRESSURE:	<b>6.9 LBS. PER SQUARE INCH</b>
OPERATOR PLATFORM:	AT REAR GROUND CONTROLS
GROUNDING LUG:	STAINLESS LUG ON DECK

## OPTIONS

HYDRAULIC POLE GUIDE (MANUAL TILT)

HYDRAULIC POLE GUIDE (HYDRAULIC TILT)

DUAL SIDED POLE CARRIERS (2)

TRANSFORMER / MATERIAL HANDLING JIB

SINGLE BUCKET CAPACITY 350 LBS.

ELECTRIC RECOVERY WINCH

HYDRAULIC HOSE REEL FOR TOOLS @ GROUND

DUAL BUCKET CAPACITY 300 LBS. EACH (HYDRAULIC OVERLOAD PROTECTION REQUIRED)

750 LB. CAN HANDLER W/ SHORT JIB

SINGLE BUCKET ARM (NEEDED IF PURCHASING DUAL BUCKET & CAN HANDLER)

H.O.P. HYDRAULIC OVERLOAD PROTECTION SYSTEM

ALUMINUM CARGO BOXES (SET OF 2)

RADIO REMOTE CONTROLS BELTPACK (Includes Start/Stop)

EMERGENCY LOWERING

HIGH/LOW TWO SPEED THROTTLE

12 V OUTLET (CIGARETTE LIGHTER) NEAR REAR CONTROLS

1250 WATT 12 VOLT POWER INVERTER

2000 WATT 12 VOLT POWER INVERTER (DUAL BATTERY)

EXTRA SET OF PINS FOR ENTIRE UNIT

CONTINUOUS ROTATION

AUDIBLE ALARMS FOR OUTRIGGERS

BOOM OVERSTOW SWITCH

TOOL OUTLETS @ BOOM

4 THERMOPLASTIC MOBILE MATS 2' x 8' LONG

STORAGE BRACKET FOR GROUND MATS ON TRAILER

ENGINE BLOCK HEATER

REAR WINCH RECEIVER BRACKET

KELLY BAR EXTENSION

PINTLE EYE EXTENSION ON TRAILER & EXTENDED SAFETY CHAINS

SPARE TRAILER TIRE

BRACKET FOR SPARE TIRE STORAGE ON TRAILER

SCREW ANCHOR ASSEMBLY

BRACKET FOR SCREW ANCHOR

ELECTRIC TONGUE JACK

SINGLE PHASE LIFT ARM

SET OF (4) WOODEN 19.25 x 19.25 x 1-7/8" OUTRIGGER PADS

SET OF (4) PLASTIC 18 x 18 x 1.5" OUTRIGGER PADS

KELLY BAR ADAPTER 2-5/8" MALE HEX HUB TO 2" FEMALE APPROX. 18" LONG

KELLY BAR ADAPTER 2-1/2" MALE HEX HUB TO 2" FEMALE APPROX. 18" LONG

SOLAR BATTERY CHARGER ON TRAILER

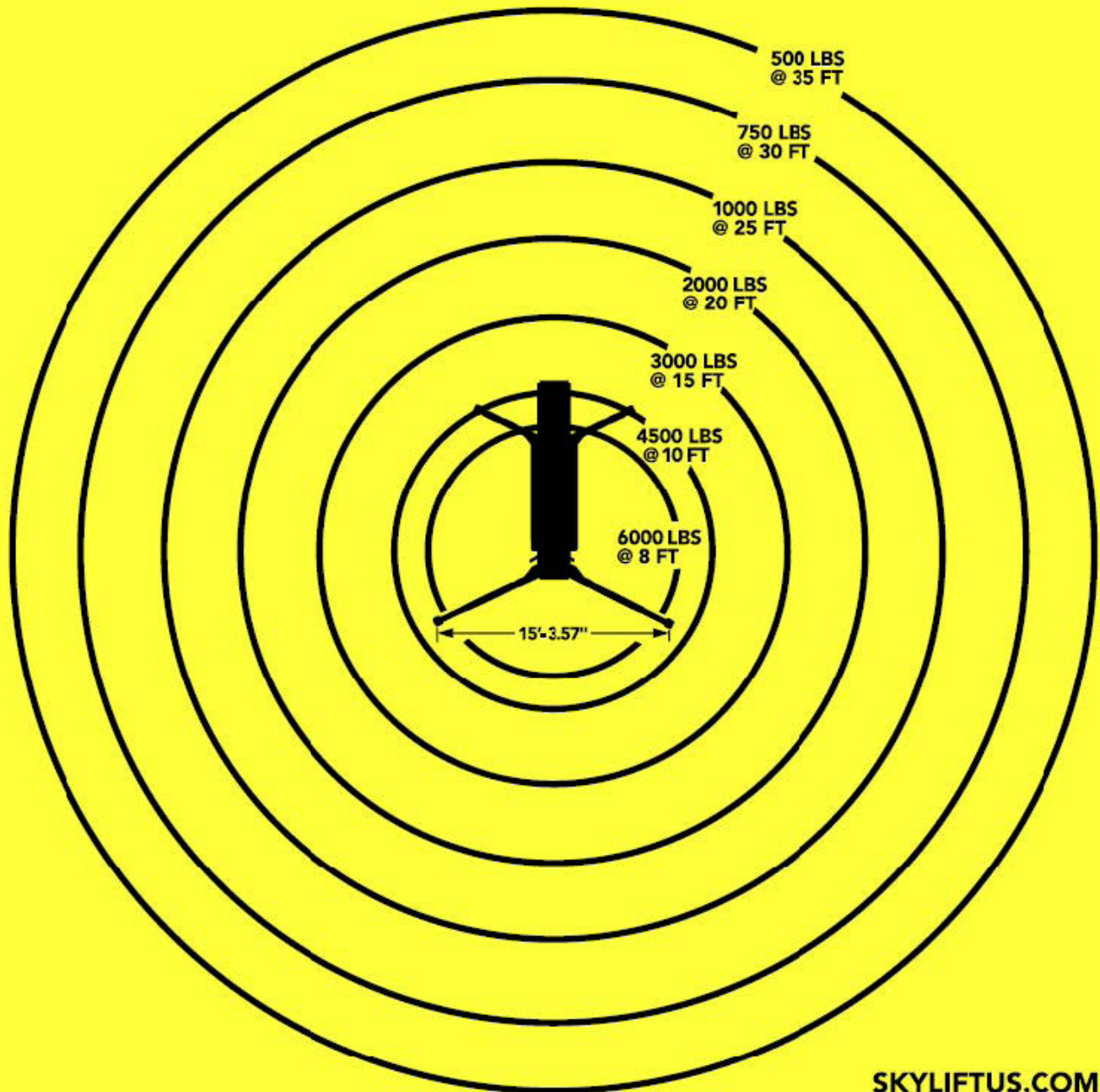
EXTRA SET OF WORK LIGHTS (2)

EXTRA SET OF MACHINE MANUALS

90" NON-MARKING TRACKS

RECOMMENDED TRAILER: 20' / 20,000 LB. G.V.W.R. UTILITY TRAILER

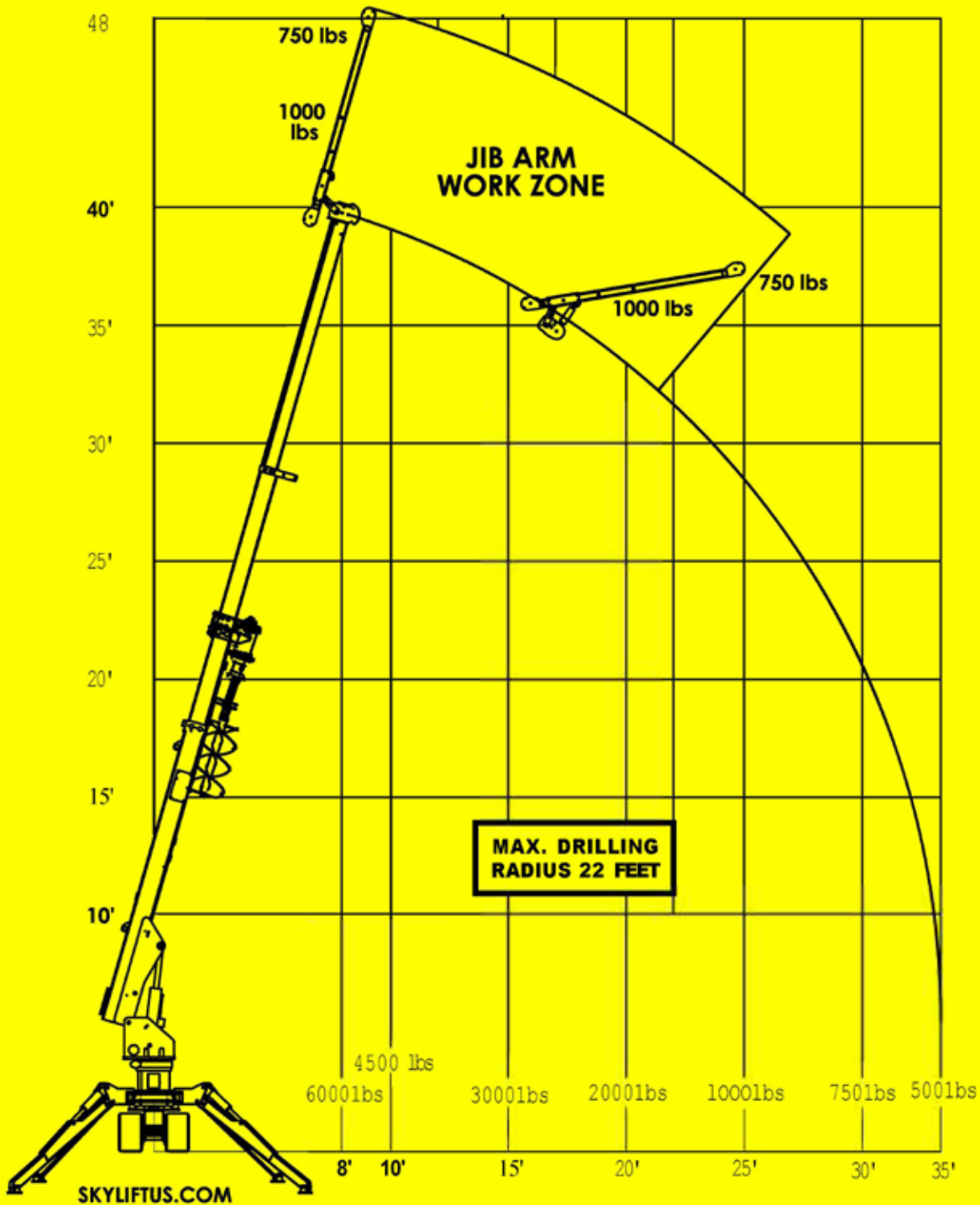
# MD6000 E-SERIES OVERHEAD WORK LOAD AREA



SKYLIFTUS.COM



## WORK LOAD CHART



## CAN HANDLER WORK LOAD CHART MD6000 E-SERIES

