

The next generation of **D-BOX** actuators is here. Benefit from a more robust and compact actuator form factor while retaining the same core architecture and software integration process that lifted **D-BOX** ahead of its competitors. The new generation comes in a more robust packaging, containing a quick start guide that outlines the key components as well as all the configuration steps needed to ensure the simplest of setup.

PERFORMANCE UNDER MAXIMUM LOAD	500HD-6
MAXIMUM LIFTING CAPACITY	500 lb / 226 kg
HORIZONTAL LOAD	Translation on limited friction surfaces can be done on weights up to 3 times vertical lifting capacity.
MAXIMUM STROKE	6 inch / 152.4 mm
MAXIMUM VELOCITY	100 mm/s
MAXIMUM ACCELERATION	+/- 1 g-force
FREQUENCY RANGE	0-100 Hz
OPERATING TEMPERATURE RANGE	0-40 °C
OPERATING HUMIDITY	10 to 50 %

POWER REQUIREMENTS			AVERAGE POWER To be used for electric consumption (Watts)	AVERAGE POWER To be used for converter specification (VA)	PEAK CURRENT To be used for breaker specification (A)
120 V 50/60 HZ	500 lb	1 TO 2 ACTUATORS	411 W	633 VA	7.2 A
		3 TO 4 ACTUATORS	822 W	1266 VA	14.5 A
230 V 50/60 HZ	500 lb	1 TO 2 ACTUATORS	438 W	645 VA	3.4 A
		3 TO 4 ACTUATORS	876 W	1290 VA	6.7 A

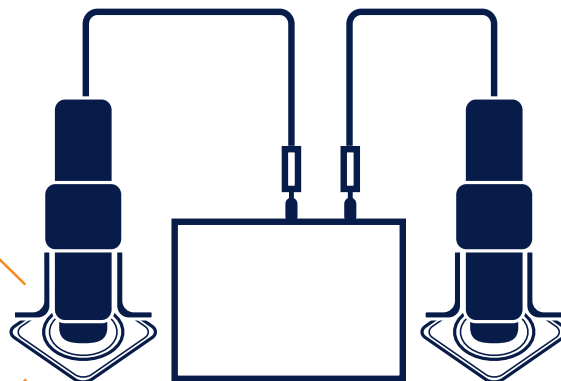
Note: It is not recommended to connect your D-BOX system to a GFCI breaker type

# SYSTEM OVERVIEW\*

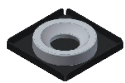
## FACTORY BRACKET



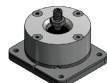
**H** Bracket



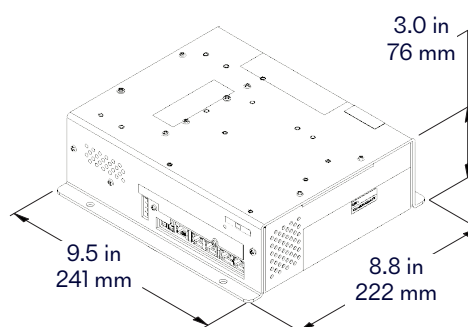
## ENDING OPTIONS



**NON CAPTIVE**  
ENDINGS



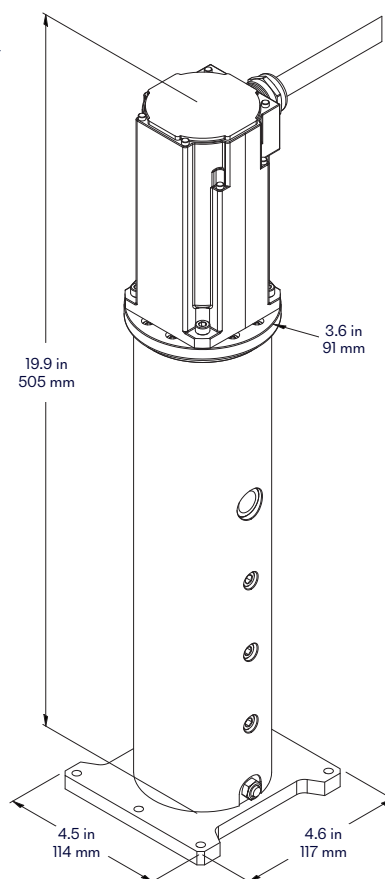
**CAPTIVE**  
ENDINGS



\*Two actuator system

## 6" ACTUATOR FAMILY

**500 HD-6**



\*HD refers to an actuator designed with a double nut ball screw for higher durability in high strain environment and extended periods of time.