



INSTALLATION MANUAL
BS/BSE FRONT BUMPER
PRODUCT NUMBER: X5551-52
APPLICATION: 2021 DODGE TRX
MATRIX FRONT BUMPER



IMPORTANT SAFETY GUIDE | Your safety and the safety of others is very important.

In order to help you make informed decisions about safety, we have provided the following warnings, safety precautions, installation instructions, and other important information to alert you to potential hazards that could hurt you or others.

Please do a job safety analysis before each task to identify potential hazards for your situation and remove/protect against them. Use own good judgment and take your time.

Check packaged materials immediately upon arrival to ensure that all listed parts are included and undamaged.

Read and understand all warnings, safety precautions, and instructions before installing this product.

SENSORS FIELD OF VIEW MAY BE ALTERED WITH USE OF THE REPLACEMENT BUMPER.

WARNINGS

- Failure to observe the following warnings and instructions provided in this manual could lead to severe injury and/or death.
- For professional installation only. Careless installation and/or operation can result in serious injury, death, and/or equipment damage. All liability for installation and use rests with the user or consumer.
- Fab Fours, Inc. only approves installing this product according to these written instructions with the hardware provided. Failure to install according to these instructions will invalidate the warranty. This includes, but is not limited to, using alternative installation methods, hardware, or materials.
- This product is for off road use only.

SAFETY PRECAUTIONS

- Always remove jewelry and wear eye protection.
- Always use extreme caution when jacking up a vehicle for work. Set emergency brake and use tire blocks. Locate and use the vehicle manufacturers designated lifting points. Use jack stands.
- Always use appropriate and adequate care in lifting components into place.
- Always ensure components will remain secure during installation and operation.
- Always wear safety glasses when installing this kit. A drilling operation will cause flying metal chips. Flying chips can cause serious eye injury.
- Always use extreme caution when drilling a vehicle. Always disconnect power before welding. Thoroughly inspect the area to be drilled (on both sides of material when possible) prior to drilling, and relocate any objects that may be damaged.
- Always use extreme caution when welding a vehicle. Thoroughly inspect the area to be welded (on both sides of material when possible) prior to welding, and relocate any objects that may be a fire hazard. When welding in a cab, make sure the interior surfaces are covered (e.g., welding blanket) and a fire extinguisher is at hand.
- Always use extreme caution when cutting and trimming during fitting.
- Always tighten all nuts and bolts securely per installation instructions.
- Always route electrical cables carefully. Avoid moving parts, components that become hot, and rough or sharp edges.
- Always insulate and protect all exposed wiring and electrical terminals.
- Perform regular inspections and maintenance on mounts and hardware.

TABLE OF CONTENTS

- 2 SAFETY / DISCLAIMER
- 3 TABLE OF CONTENTS
- 4 A MESSAGE FROM THE OWNER
- 5 GETTING STARTED
- 6 PROVIDED MATERIAL
- 7 DISASSEMBLY
- 9 INSTALLATION
- 12 CONTACT

A MESSAGE FROM THE OWNER



Fab Fours' was born out of a passion for customizing vehicles and a love of the outdoors. Our engineering team uses the latest 3D design software to turn new product ideas into reality. In our factory, designs come to life with the combination of cutting edge technology for metal cutting and forming and an American workforce that puts its' heart and pride into every product.

From design and manufacturing, to quality and delivery, Fab Fours' mission is to be the market leader for steel truck and jeep accessories. We make sure a quality product is delivered on time, more than expected, better than expected to our customers.

Enjoy your new Fab Fours product. Welcome to the family!

Greg Higgs

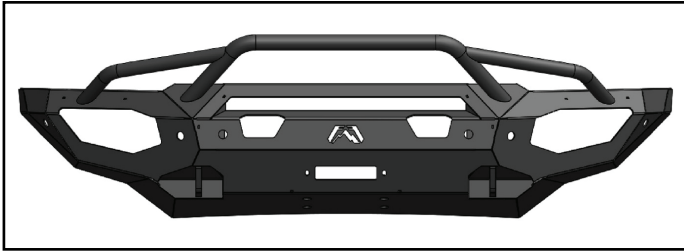
FOUNDER, FAB FOURS

GETTING STARTED

Before you begin the installation process of your new Fab Fours product, we suggest laying out all materials and parts on a pad or protective surface.

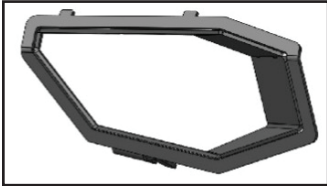
Failure to fully account for all components before beginning installation may leave vehicle immobile until part is acquired. Refer to the next pages as an inventory check.

PROVIDED MATERIALS

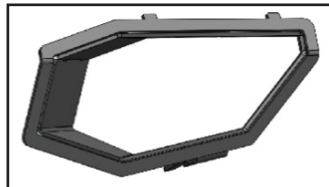


22430 TRX Matrix Front Bumper

50276
HW-
KIT

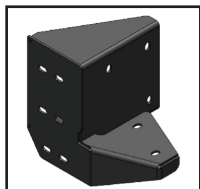


22431 DS Light Box

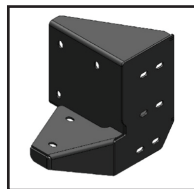


22432 PS Light Box

61632
2 EPOXY



22434 PS MOUNT



22433 DS MOUNT

X5551-52
Instruction
Manual



(2) Light Bar L-Brackets

HARDWARE KIT | 50271

FAB FOURS IDENTIFICATION	COMPONENT DESCRIPTION	QTY
50276-HW	1/4"-20 x 1" Yellow Zinc Hex Head Bolt, Grade 8	2
50276-HW	1/4"-20 Yellow Zinc Hex Nut, Grade 8	2
50276-HW	1/4" Yellow Zinc Flat Washer, Grade 8	4
50276-HW	1/4" Yellow Zinc Lock Washer, Grade 8	2
50276-HW	5/16"-18, Yellow Zinc Hex Cap Bolt, Grade 8	2
50276-HW	5/16", Stainless Steel Flat Washer	2
50276-HW	5/16", Yellow Zinc Lock Washer, Grade 8	2
50276-HW	1/2"-13, Yellow Zinc Hex Nut, Grade 8	12
50276-HW	1/2", Yellow Zinc Flat Washer, Grade 8	12
50276-HW	1/2", Yellow Zinc Lock Washer, Grade 8	12
50276-HW	7/16"-14 x 1.5", Yellow Zinc Hex Bolt, Grade 8	6
50276-HW	7/16"-14, Yellow Zinc Hex Nut, Grade 8	6
50276-HW	7/16" Yellow Zinc Flat Washer, Grade 8	12
50276-HW	7/16" Yellow Zinc Lock Washer, Grade 8	6
50276-HW	1-1/4" Plastic Plug	6

TOOLS REQUIRED

- 8mm socket
- 10mm socket
- 13mm socket
- 18mm socket
- 24mm socket
- 7/16" socket/wrench
- 1/2" socket/wrench
- 3/4" socket/wrench
- Body Pry Tool

ASSISTANCE

We recommend two people perform the installation as items are heavy and may need to be held in place while installing.

ORGANIZATION

Disassemble the vehicle where you can catalog and store everything. We suggest labeling and bagging all the OEM bolts when removing from the vehicle. Failure to keep track of parts could lead to an inability to properly reinstall components.

ASSISTANCE

The 2019 Dodge Ram may have six (6), four (4), or no sensors in the rear bumper. This manual shows the six sensor configuration for illustration purposes but your specific installation may vary.

DISASSEMBLY

1. Start by removing the five (5) 8mm bolts located under both the passenger side and driver side wheel wells. Once the bolts have been removed, remove the plastic wheel well cover from the vehicle. Figure 1a-1b.



Figure 1a



Figure 1b

2. Locate the harness plug on the driver side of the vehicle by the frame mount and disconnect it. Figure 2.



Figure 2

3. Use an 18mm socket to remove the six (6) (three per side) mounting nuts from the frame horn. Remove the OEM bumper from your truck at this point. Figure 3.

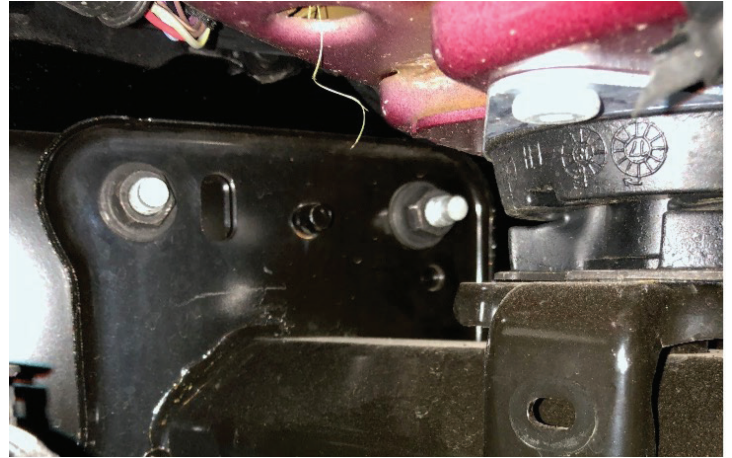


Figure 3

4. Carefully remove the six (6) OEM parking sensors from the OEM bumper by pushing the sensor housing clips away from the sensor and pushing the sensor out of its housing. Figure 4.



Figure 4

5. Remove the center four (4) sensor housings from the bumper by pushing in the clips and pushing them out of the OEM bumper. Use a heat gun or blow dryer to heat up the two (2) outside sensor housings to make them easy to remove. Heat up the adhesive and use a pry tool to carefully remove the outside sensor housings.

INSTALLATION

6. Use a 24mm and 18mm socket to remove the two (2) bolts holding the OEM tow hooks to the frame. Figure 5.

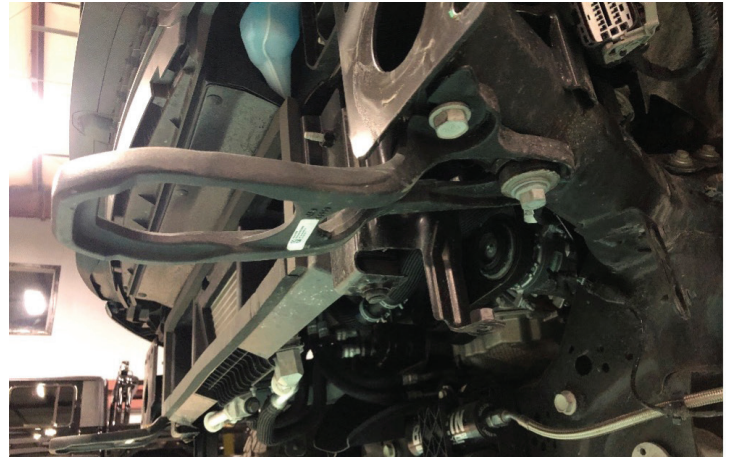


Figure 5

7. Install the six (6) sensor housings and sensors into their respective holes and use the provided epoxy (61632) to hold them in place. Make sure to orientate the sensors the same way they were in the OEM bumper. (Figure 6a-b)



Figure 6a

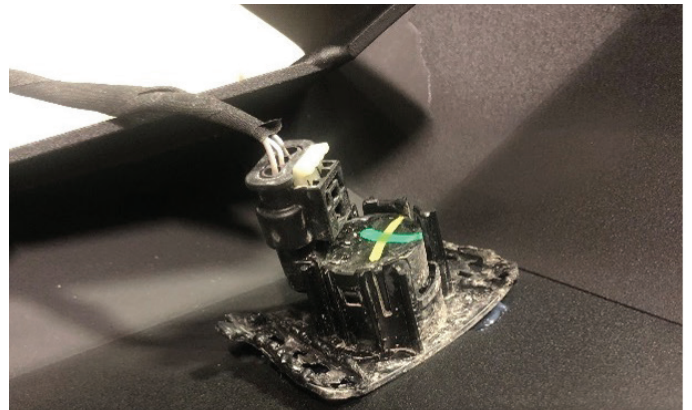


Figure 6b

8. If installing a 30" light bar, use the provided L-brackets (21871) and the 1/4" yellow zinc hex bolts, flat/lock washers and nuts (50278-HW). (Figure 7)

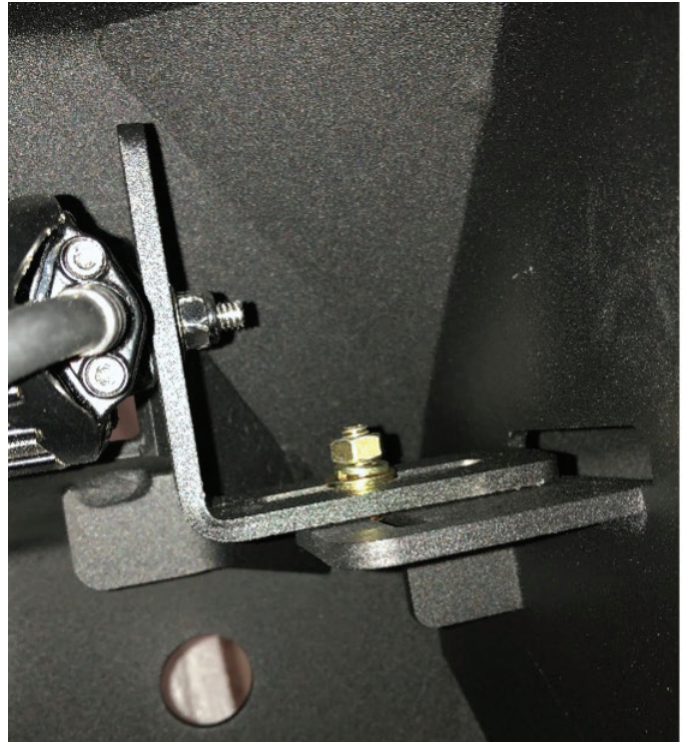


Figure 7

9. Loosely install the two mounting brackets (22433-22434) onto the frame using the OEM bolts removed during step 6 and the provided 7/16" yellow zinc bolts, flat/lock washers and nuts (50278-HW). Hand tighten all the hardware snug but loose enough to manipulate the brackets for the bumper install. Figure 8.

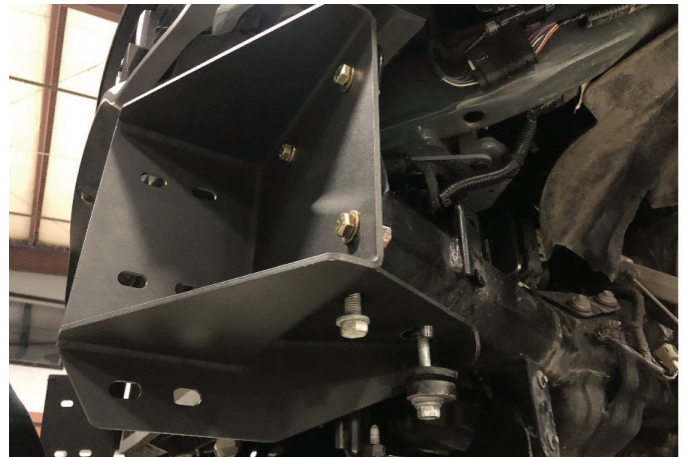


Figure 8

10. With assistance; hold the bumper up to the mounts and use the six (6) provided bolt strips along with the 1/2" yellow zinc flat/lock washers and nuts to install it (50278-HW). Do NOT tighten bolts yet. Figure 9.



Figure 9

11. While the bumper is still loosely installed; install the two light boxes (22431 and 22432) with the provided 5/16" yellow zinc bolts with fender washers and lock washers (50278-HW). Figure 10.



Figure 10

12. Position the bumper right and left while the bolts are loose and then fully tighten the mounting bracket hardware. Next position the bumper up and down as desired and fully tighten the bumper hardware. Plug in the wiring harness and enjoy the fit and finish of your Matrix bumper.

CONTACT INFORMATION

**FAB FOURS INC.
2213 INDUSTRIAL PARK ROAD
LANCASTER, SC 29720**

PHONE: (866) 385-1905

FAX: 970-385-1914

EMAIL: SUPPORT@FABFOURS.COM

FABFOURS.COM



**“IF YOU’RE LOOKING FOR MORE OF THE SAME,
THEN YOU’VE COME TO THE WRONG PLACE.”**

- GREG HIGGS

