

# green GLUING

## ADHESIVE MEASURING SYSTEM AMS

Option for Concept Diamond and Concept Stream  
 Process Reliability | Production Efficiency |  
 Cost Transparency

# ADHESIVE CONSUMPTION MONITORING FOR INCREASED PRODUCTIVITY

The optional AMS (Adhesive Measuring System) offers measurement capabilities for melters of the Concept series with ICSN electronics (Diamond and Stream). The AMS measures and monitors the amount of adhesive used and signals when the applied adhesive amount deviates from the defined tolerance range. There are two variants, each differing in the accuracy and response time of the measurement. One variant is equipped with a special KPC12 AMS piston pump and measures the adhesive consumption via a pump stroke. The more accurate and faster measuring variant works with the AMS-V measuring cell attached to the adhesive distributor via the gear flow.

By monitoring the amount of adhesive applied, the adhesive can be reduced to a minimum while still producing a reliably glued product. This increases process reliability and line efficiency. In addition, the reduction in the adhesive amount and product waste results in significant cost reductions.

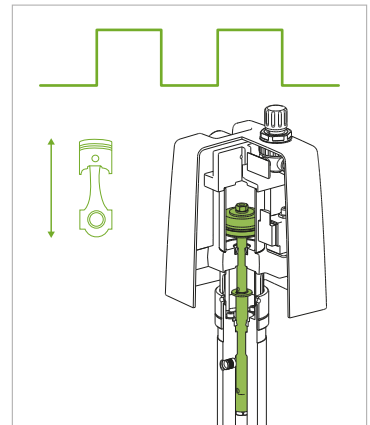
The InfoPlus software is used for graphical representation of the measured data. Evaluations regarding the amount of adhesive applied per product or over a specific period (minute, hour, day, or month) and the number of products produced are clearly displayed. The measured data can also indicate blockages of filters of the melter or application heads, or the application nozzle. The evaluation can be used to optimize settings and processes, resulting in cost reductions or preventing unplanned downtimes.

Analyses make it easy to compare individual production lines, to evaluate new adhesives and

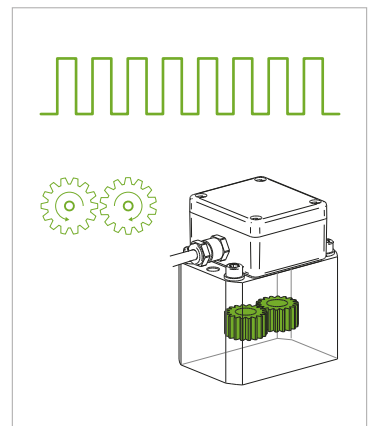
application patterns, and to determine information for procurement and spare parts inventory. The measured data also can be exported for further analyses via a USB interface on the melter or transmitted to a higher-level system via the data interface (Profibus, Ethernet, or real-time Ethernet).

### Your Advantages

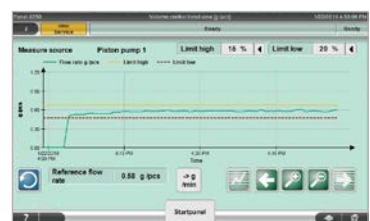
- Process reliability by adhesive consumption monitoring
- Reliably glued products by ensuring the minimum adhesive application amount
- Reduced costs due to optimized adhesive amount and less product waste
- Notification in the case of deviations from the defined tolerance range
- Clear graphical representation and data export (CSV file) via USB or Ethernet interface
- Optimized procurement and warehousing of adhesives based on consumption data analysis



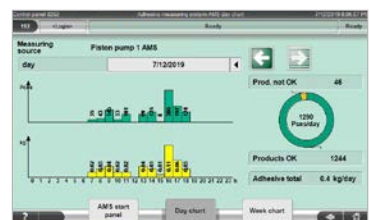
KPC12 AMS piston pump



AMS-V measuring cell



InfoPlus: Tolerance range



InfoPlus: Consumption per day

### TECHNICAL DATA

Design	KPC12 AMS piston pump	AMS-V 0.025 measuring cell	AMS-V 0.1 measuring cell
Adhesive viscosity	500 to 10,000 mPas	500 to 2,500 mPas	500 to 5,000 mPas
Measuring accuracy	± 5 %	± 0.3 %	± 0.3 %
Measuring range	1 to 50 kg/h *	1 to 20 kg/h *	1 to 50 kg/h *
Resolution/pulses	approx. 4.0 g/pulse * / **	0.025 g/pulse *	0.1 g/pulse *

\* Density 1.0

\*\* Depending on pump leakage and adhesive viscosity