



# green GLUING

## MULTIMELT AND MULTIMELT BUFFER

Universal Melting Unit and Buffer for PUR, EVA, PSA, ...  
Simple cleaning | suitable for all hotmelts |  
best price-performance ratio

## MULTIMELT AND MULTIMELT BUFFER

### Product description

The new MultiMelt tank melter is a product for users who process different hotmelts. The hot-melt unit is engineered to process PUR hotmelt, but also other thermoplastic adhesives such as EVA, PSA, APAQ, etc. Tank and melting grid can be cleaned easily to permit changing from one hotmelt to another. A dry-air supply for the tank is available as an option for processing of PUR adhesives. In combination with a drummelter or premelter the MultiMelt unit can also be used as a buffer tank (intermediate tank).

### No deposits of adhesive in the corners

The high, round melting tank is directly connected to the melting grid and features no straight surfaces, i.e. it has no corners where adhesive can form deposits and react. This is very important with sensitive adhesives such as reactive PUR hotmelt. The design combines a good accessibility and thereby easy maintenance and simple shapes with good functionality. This results in an excellent price-performance ratio.

### Compatibility

All key components used in the new hotmelt unit, i.e. the electronics, pumps, drives, filters and heating elements are compatible with all Robatech units.

### Form follows Function

The design has been simplified to the principle of „shape follows function“ in order to achieve a costeffective solution with maximum service-friendliness.

### Simple cleaning

Thanks to a high quality coating all components coming in contact with adhesive can be cleaned quickly and easily. Much attention has been given to good service accessibility

### Equipment versions

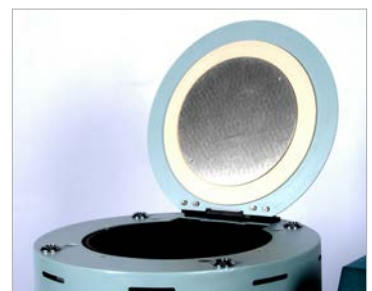
The simple version is equipped with one gear pump. It is also possible to have 2 gear pumps when a big adhesive quantity is required especially for wide slot dies.

### Applications

- Profile wrapping
- As buffer and small adhesive applicators
- Applications calling for a fast change of adhesives

### Features

- Quick and easy to clean
- Reliable components
- Suitable for reactive PUR hotmelt, EVA, PSA, APAQ, ... hotmelts
- melting and buffer versions available
- as 1 and 2 pumps versions available
- Robatech modularity and compatibility
- Tank design for homogeneous, gentle melting
- simple use for the operators
- good accessibility, service-friendly
- only front access needed
- Excellent price-performance ratio
- Form follows function design
- Mechanical or pneumatic safety valve
- for PUR processing:
  - dry air or dry nitrogen (N) supply (optional)
- Quantity control (optional)
- Pattern controller AS-IK 40 (optional)

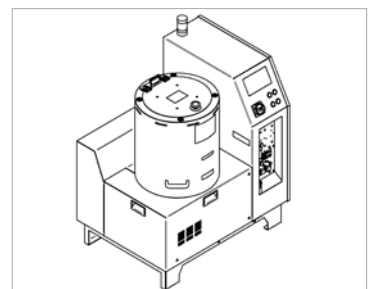
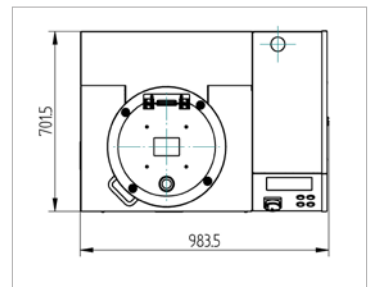
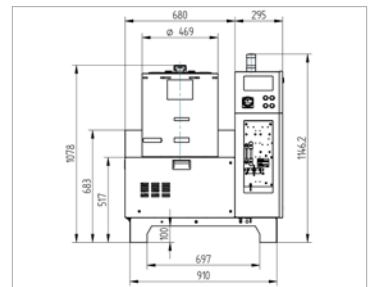
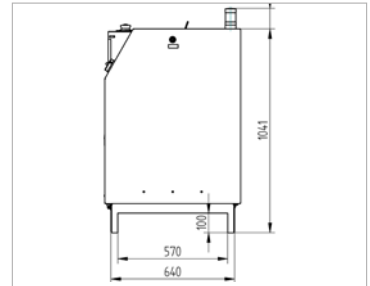


## MULTIMELT AND MULTIMELT BUFFER

### TECHNICAL DATAS

	MultiMelt A and C	MultiMelt Buffer
Tank content	40 litres for granules or 20kg of candles without inliner	40 Liter
Container size	Ø 120...285 mm, height 120...350 mm	-
Tank lid opening	Ø 291 mm	Yes
Melting rate*	max. 30 kg/h	-
Gear pump types	ZP 1 S, ZP 2 S, ZP 3 S, GR 1, GR 2, GR 3	ZP 1 S, ZP 2 S, ZP 3 S, ZP 4 S
Feed quantity	max. 88 kg/h	max. 144 kg/h
Output pressure	max. 70 bar, continuous variable	
Viscosity	500...60 000 mPas	500...50 000 mPas
Operating temperature	PUR 20°...160°C/320°F, EVA 20°...210°C/410°F	
Protective gassing	Optional membrane compressed air dryer and/or nitrogen	
Compressed air supply	Min. 6 bar, oil-free air in acc with Class 4 according ISO 8573-1	
Operating voltage	400 Volt, 3LNPE, 50/60 Hz or 200...240VAC, 3ØPE, 50/60 Hz or 400 Volt, 3LPE,	
Euronorm EN60204-1	50/60 Hz	
Power consumption	1 pump 7800 Watt / 2 pumps 9300 Watt without external heating zones	1 pump 4800 Watt / 2 pumps 6300 Watt without external heating zones

\* Guide value, melt rate depends on the adhesive



**Dimensions**  
**MultiMelt A, C, Buffer**  
All dimensions in millimetres