



green  
GLUING

## JUMBOFLEX

Adhesive Melters  
Innovative | powerful | efficient

## WITH UNIQUE PREMELTING SOLUTION FOR INCREASED PERFORMANCE

### Flexible use in three variants

The JumboFlex melters are designed for melting and delivery of large volumes of thermoplastic, non-reactive hot melt adhesives (EVA, PE, PSA, and APAQ). They feature a modular design and are available as premelter, melter, or buffer, depending on the area of application. The dimensions of the device are the same for all variants, which facilitates planning and integration. Thanks to the modular design, the devices can be used flexibly, from simple pot filling, to adhesive metering in high-precision application nozzles, to buffer function for particularly high adhesive consumption and increased speeds.

### Optimum adhesive processing

The innovative and unique melting grille concept enables geometrical alignment of the melting grille elements to the respective form of adhesive. This optimizes adhesive processing and achieves improved melting performance.

### Industry 4.0 ready

Thanks to the intelligent RobaPlus software, the devices are designed for Industry 4.0. All required data can be communicated via Ethernet

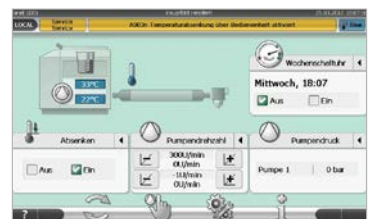
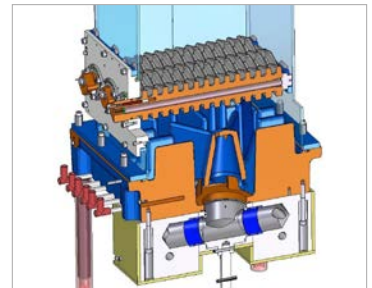
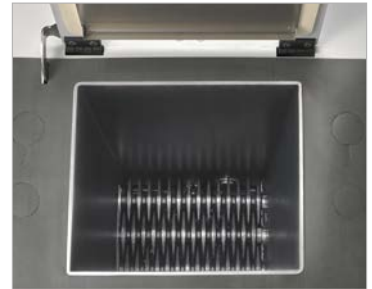
for processing to the machine control or into the production control center.

### Easy and efficient maintenance

Depending on adhesive viscosity and application, fine filters are used for JumboFlex melter and buffer. They collect dirt particles and prevent nozzle blockage and system interruptions. The devices can be equipped with FEP coating for easy and efficient cleaning. Spare parts of the previous Jumbo generation can also be used for JumboFlex devices.

### Your benefits

- Increased melting performance thanks to innovative melting grille concept
- Suited for different types and forms of adhesive
- Clean and uniform adhesive application from beginning to end thanks to fast, dynamic adhesive pressure regulation
- Touch screen and Industry 4.0 ready
- Integrated pattern control
- Easy and efficient maintenance
- Optional: automatic filling system



### TECHNICAL DATA

	JumboFlex 50	JumboFlex 100
Supply tank	50 dm <sup>3</sup>	100 dm <sup>3</sup>
Melt rate <sup>1)</sup>	50 kg/h	100 kg/h
Adhesive viscosity	ZP = 1'000 to 65'000 mPas GP = 2'500 to 65'000 mPas	
Number of pumps	1 to 2	
Feed capacity <sup>2)</sup>	ZP1: 1,5 to 21,9 kg/h, ZP2: 2,9 to 44,1 kg/h, ZP3: 5,9 to 89,0 kg/h, ZP4: 11,9 to 177,9 kg/h	
Operating temperature	20 to 200 °C	
Number of heated hoses	2 drilled holes per pump G 3/4"	
Supply voltage (EU)	400/230 V, 3Ø N/PE, 50/60 Hz 400 V, 3Ø PE, 50/60 Hz, star point generator	
Supply voltage (USA, JP)	200-240 V, 3Ø PE, 50/60 Hz	
Dimensions (width x depth x height)	850 x 760 x 1300 mm	
Weight (1-pump device)	245 kg	280 kg

<sup>1)</sup> The melt rate varies depending on the adhesive type which is processed with the device.

<sup>2)</sup> Data applies for 50 Hz, efficiency = 85 % and density = 1. The feed capacity varies depending on adhesive type