



green  
GLUING

## SWIVEL CONNECTORS

Option for Robatech Heated Hoses

## PROTECTION AGAINST TORSION ENSURES MAXIMUM SERVICE LIFE OF HEATED HOSES

The service life of heated hoses is drastically reduced under torsional stress. Swivel connectors are used to prevent this. We offer them in two versions, as unheated and as heated swivel connectors.

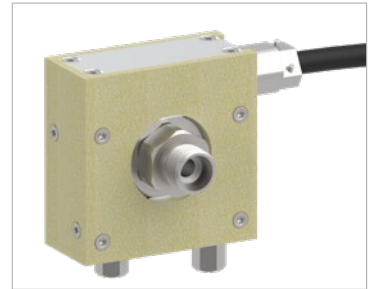
### Unheated Swivel Connectors

The unheated swivel connection is used between an application head and a heated hose or between a melter unit and a heated hose. They are available for NW 8 and NW 13 heated hose connections. The 1/4" thread allows direct screwing into the application head. The also available 1/2" connection thread can be screwed directly into the melter.

### Heated Swivel Connectors

The heated swivel connector serves as an intermediate piece between two heated hoses. It is usually installed at a pass-through into a production cell. CoolTouch insulation can optionally be fitted as operator protection to minimize the risk of burns. The heated swivel connector is available for NW 8 and NW 13 hoses.

The heating unit of the heated swivel connector can be optionally combined with unheated swivel connectors.



Heated swivel connector



Unheated swivel connector, 90°



Unheated swivel connector, straight



Unheated swivel connector, 45°

### TECHNICAL DATA

Designation	Size	Dimensions	
		ø / LxWxD (mm)	
Swivel connector, heated	2x M16x1.5	63x60x33	NW 8
Swivel connector, heated	2x M22x1.5	63x60x33	NW 13
Swivel connectors, 90°	1/4" – 90° 1/4"	31 / 55	
Swivel connectors, straight	1/4" – M16x1.5	31 / 35	NW 8
Swivel connectors, straight	1/4" – M22x1.5	31 / 35	NW 13
Swivel connectors, 90°	1/2" – 90° 1/4"	31 / 55	
Swivel connectors, straight	1/2" – M16x1.5	31 / 35	NW 8
Swivel connectors, straight	1/2" – M22x1.5	31 / 35	NW 13
Swivel connectors, 45°	1/4" – M16x1.5	31 / 62	NW 8