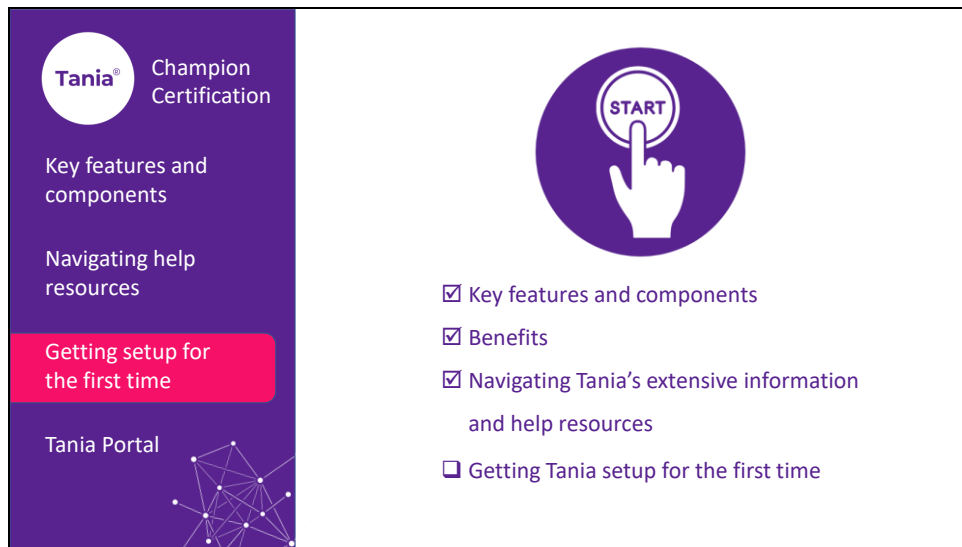




Slide 2



The slide features a purple sidebar on the left with the Tania logo and 'Champion Certification' text. Below this are menu items: 'Key features and components', 'Navigating help resources', 'Getting setup for the first time' (highlighted in red), and 'Tania Portal'. The main content area has a 'START' button icon and a checklist of topics.

Tania Champion Certification

Key features and components

Navigating help resources

Getting setup for the first time

Tania Portal

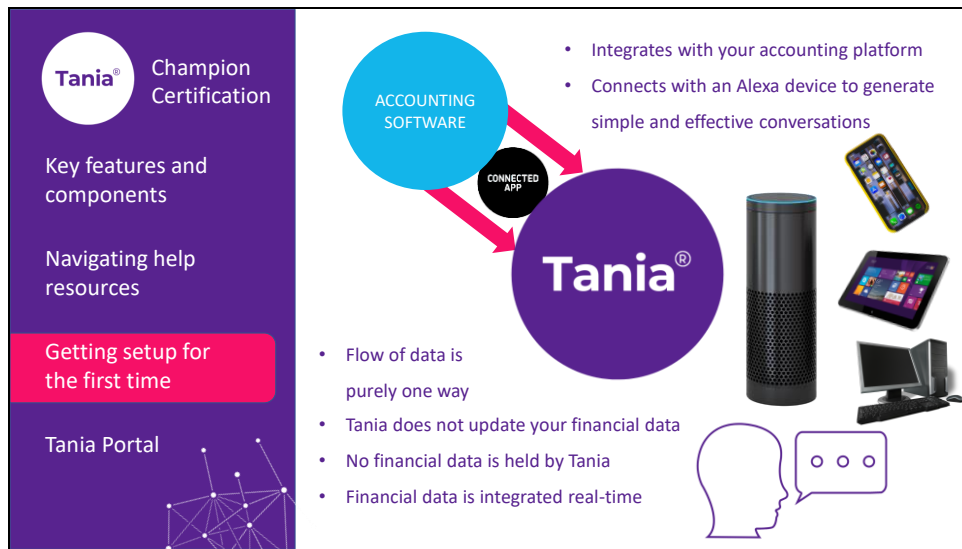
START

- Key features and components
- Benefits
- Navigating Tania's extensive information and help resources
- Getting Tania setup for the first time

Welcome! This is the third video in a series to get you setup as a Tania Champion.

Now that you have a general understanding of What Tania is, key features and benefits, navigating Tania's information and help resources – we're going to have a closer look at how we setup Tania up for the first time.

Slide 3

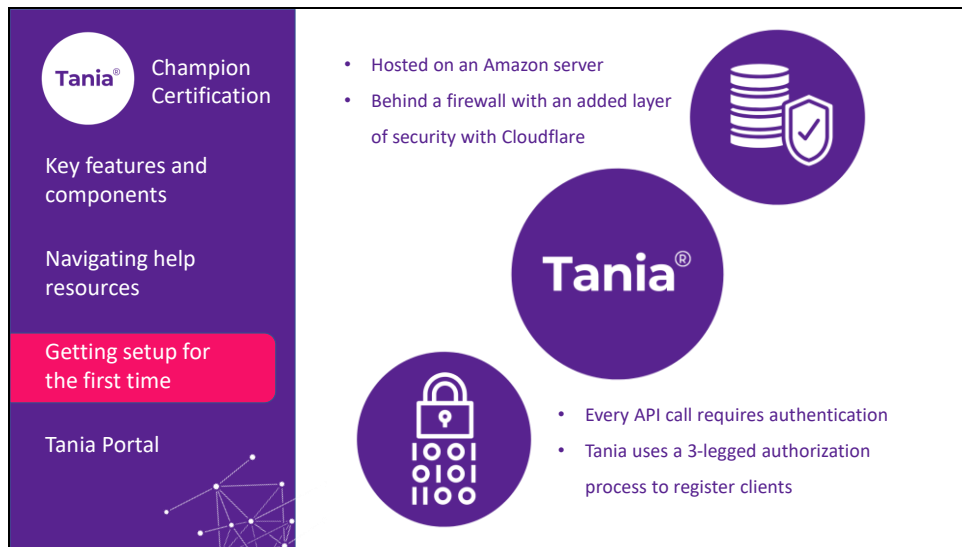


First up, the general concept of Tania is that it integrates with your accounting platform and then connects with an Alexa device to generate simple and effective conversations.

The flow of data from your accounting platform is purely one way – at no time does Tania update or change your financial data. No financial data is held by Tania or by any of the platforms or systems that Tania operates on.

Financial data is integrated real-time – which is a huge benefit in that Tania will always give current and accurate updates.

Slide 4



The slide features a purple sidebar on the left with the Tania logo and 'Champion Certification' text. Below this are links for 'Key features and components', 'Navigating help resources', 'Getting setup for the first time' (highlighted in red), and 'Tania Portal'. The main content area on the right has a central 'Tania' logo surrounded by four circular icons: a database with a shield, a padlock with binary code, a central 'Tania' logo, and a database with a shield. Text and bullet points describe the hosting and security measures.

Tania® Champion Certification

Key features and components

Navigating help resources

Getting setup for the first time

Tania Portal

- Hosted on an Amazon server
- Behind a firewall with an added layer of security with Cloudflare

Tania®

- Every API call requires authentication
- Tania uses a 3-legged authorization process to register clients

Security is a huge focus for Tania. The heart of Tania is hosted on our Amazon server, behind a firewall to which we have also added a layer of security with Cloudflare.

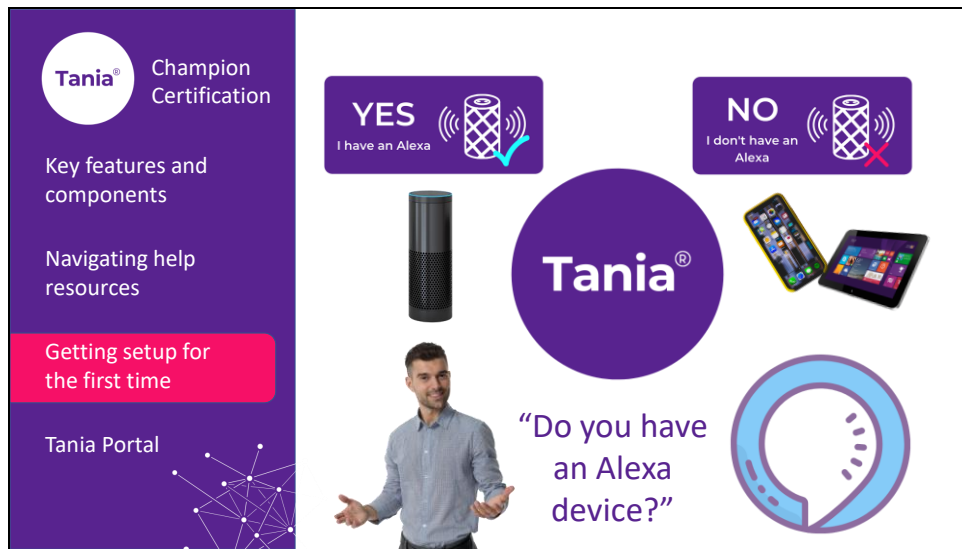
None of our API calls contain raw data, the calculation is transferred to our server which returns only the result of a calculation.

Every API call requires authentication by our database of authorised users and their respective authentication keys.

Further to this, Tania uses a 3-legged authorization process to register clients in our database, and we also make an OAuth v2 connection in our voice application to authenticate the client with our database.

Tokens are only valid for 30 minutes and are renewed only after authentication by the client when Tania is launched.

Slide 5



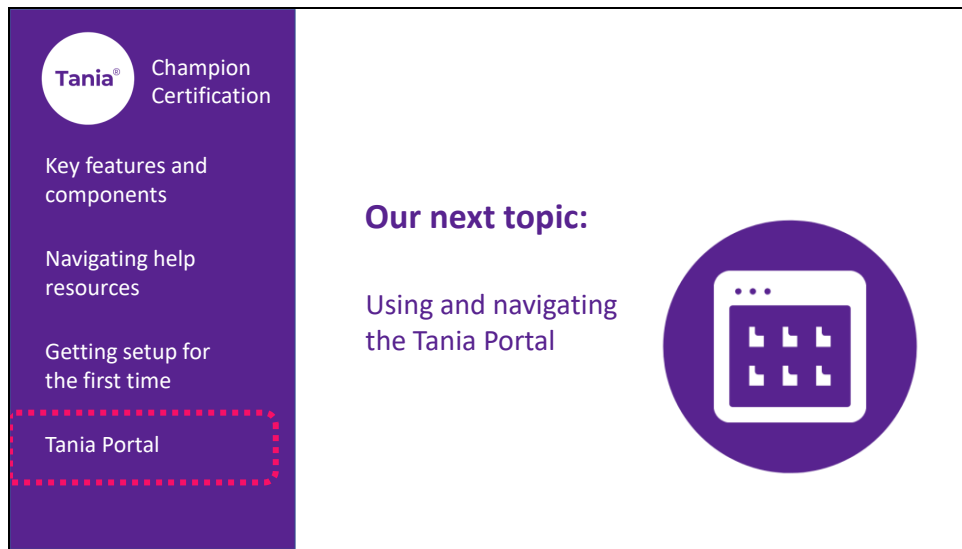
Now that we've covered how Tania accesses financial data and security – let's get started on how we setup Tania for the first time.

Tania users will need an Alexa account. Therefore, one of the first questions we'll ask when setting up is whether you have an Alexa device. If you have and use an Alexa device, then you'll most likely have an Amazon account in place.

Alternatively – if clients don't have an Alexa device, they can simply download the Amazon app to their mobile devices and create an Amazon account this way.

The Tania Knowledge base holds detailed steps and video tutorials on setting up Tania both ways - with or without an Alexa device.

Familiarise yourself with these resources, you will often point colleagues and clients here when they are setting up Tania for the first time.




Tania Champion Certification

- Key features and components
- Navigating help resources
- Getting setup for the first time
- Tania Portal**

Our next topic:

Using and navigating the Tania Portal



The slide features a purple sidebar on the left with a white circle containing the 'Tania' logo and the text 'Champion Certification'. Below this, a list of topics is shown: 'Key features and components', 'Navigating help resources', 'Getting setup for the first time', and 'Tania Portal'. The 'Tania Portal' item is highlighted with a red dashed border. To the right, the text 'Our next topic:' is followed by 'Using and navigating the Tania Portal' and a circular icon representing a portal interface with a grid of six white squares on a purple background.

We're nearly there! The next video will be the last in our series, and it's going to cover the Tania Portal and all of the functionality contained here.

Slide 7

Together we're helping businesses
love their financial story