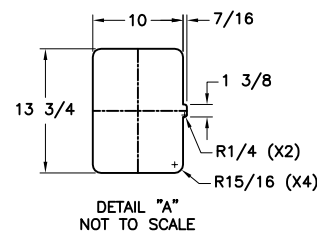
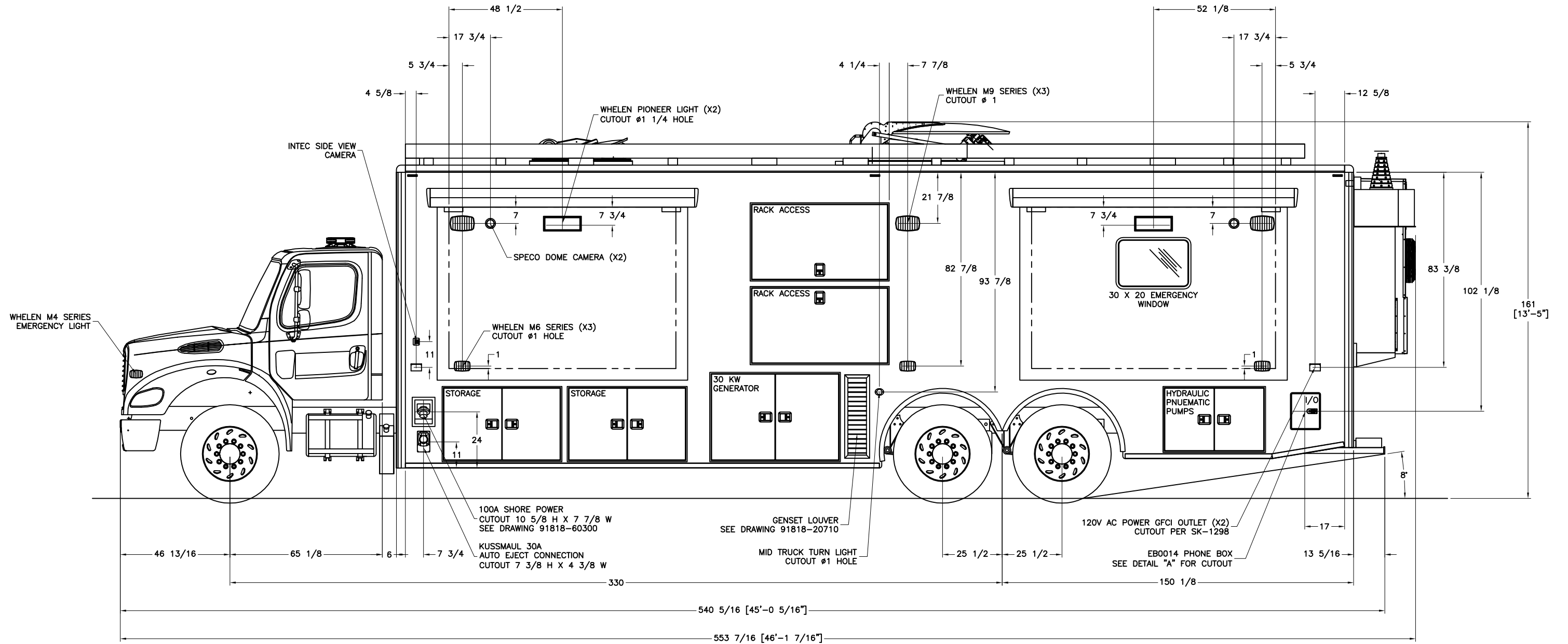


REVISIONS					
CHK DATE	CHK BY	DESCRIPTION	DATE	BY	REV
XXX	XXX	ENGINEERING RELEASE	-	XXX	00



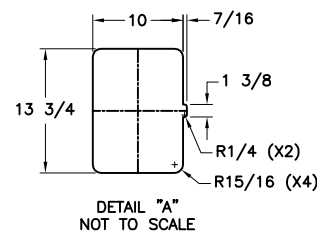
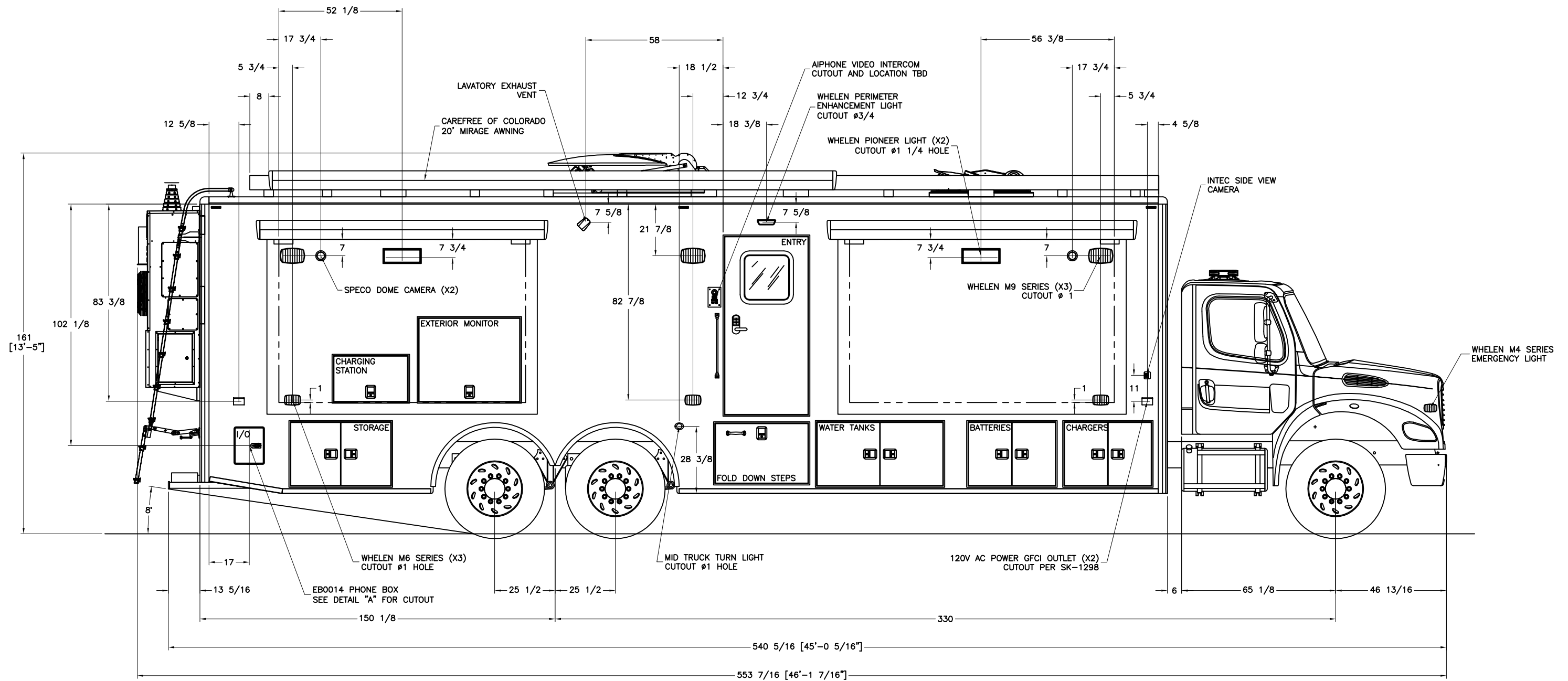
----- INSIDE EDGE OF FRAME TUBE

THIS DRAWING IS THE PROPERTY OF FRONTLINE COMMUNICATIONS CORPORATION. IT IS CONFIDENTIAL AND ALL RIGHTS ARE RESERVED. IT SHALL NOT BE REPRODUCED, COPIED, LENT, NOR USED FOR ANY PURPOSE OTHER THAN THAT FOR WHICH IT IS SPECIFICALLY FURNISHED.

DO NOT SCALE THIS DRAWING DIMENSIONS ARE IN INCHES UNLESS OTHERWISE SPECIFIED		MATERIAL SEE NOTES		FRONTLINE COMMUNICATIONS <small>An Oshkosh Corporation Company</small> 12770 44th Street North Clearwater, FL 33762-4713 (727) 573-0400 FAX (727) 571-3295	
TOLERANCES: ANGULAR: ± 1° BEND: ± 1° 2 PLACE DECIMAL ± .010 3 PLACE DECIMAL ± .005 FRACTIONS ± 1/16		FINISH MILL FINISH		EXTERIOR LAYOUT STREET SIDE	
JOB NUMBER OR PRODUCT LINE 91818		DRAWN BY MRS	DATE 10/4/18	SIZE B	DWG NO. 91818-50300
SHEET 1 OF 1	SCALE 45	CHECKED BY RPM	DATE 10/9/18		


REVISIONS

CHK DATE	CHK BY	DESCRIPTION	DATE	BY	REV
11/8/18	JRP	REMOVED IN PROCESS FROM CHARGER STATION	11/8/18	MRS	01

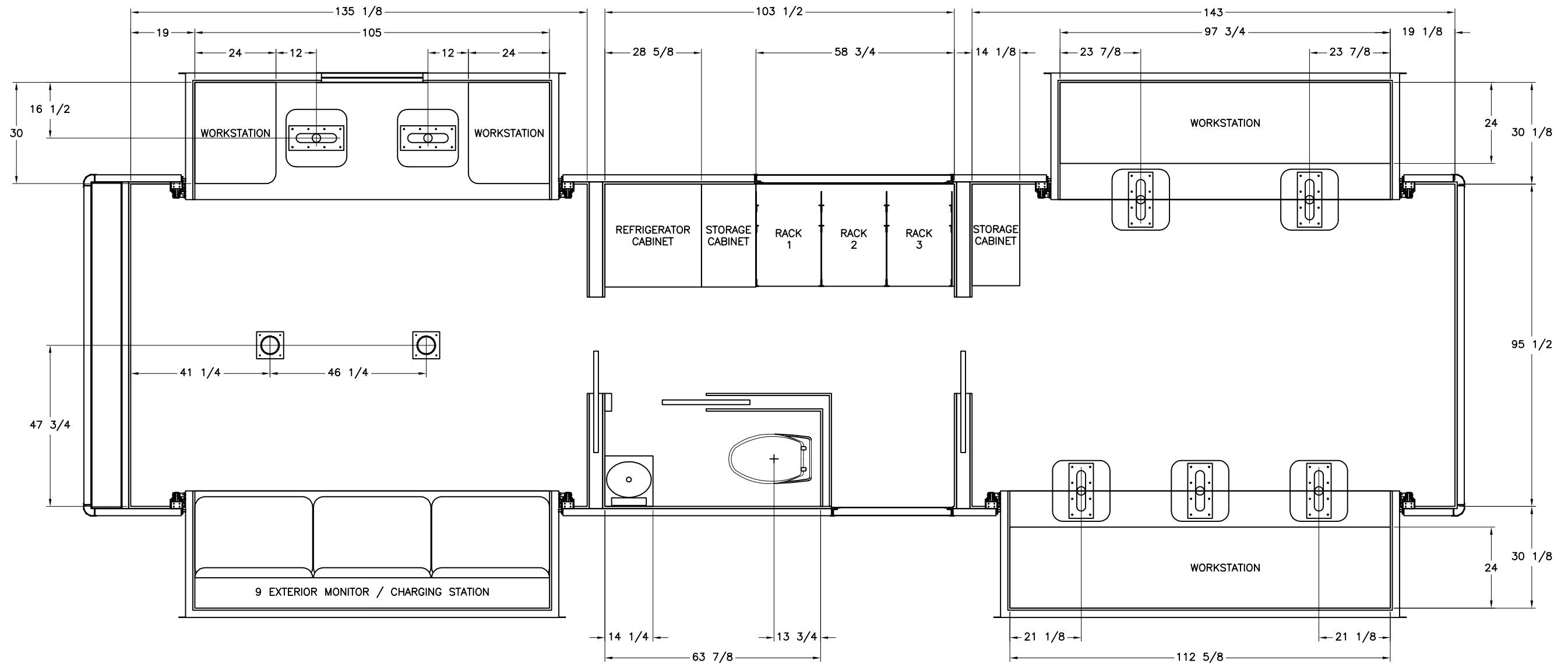


----- INSIDE EDGE OF FRAME TUBE


THIS DRAWING IS THE PROPERTY OF FRONTLINE COMMUNICATIONS CORPORATION. IT IS CONFIDENTIAL AND ALL RIGHTS ARE RESERVED. IT SHALL NOT BE REPRODUCED, COPIED, LENT, NOR USED FOR ANY PURPOSE OTHER THAN THAT FOR WHICH IT IS SPECIFICALLY FURNISHED.

DO NOT SCALE THIS DRAWING DIMENSIONS ARE IN INCHES UNLESS OTHERWISE SPECIFIED		MATERIAL SEE NOTES		 12770 44th Street North Clearwater, FL 33762-4713 (727) 573-0400 FAX (727) 571-3295	
TOLERANCES: ANGULAR: ± 1° BEND: ± 1° 2 PLACE DECIMAL ± .010 3 PLACE DECIMAL ± .005 FRACTIONS ± 1/16		FINISH MILL FINISH		EXTERIOR LAYOUT CURB SIDE	
JOB NUMBER OR PRODUCT LINE 91818		DRAWN BY MRS	DATE 10/4/18	SIZE B	DWG NO. 91818-50200
SHEET 1 OF 1	SCALE 45	CHECKED BY RPM	DATE 10/18/18		

REVISIONS						
CHK DATE	CHK BY	DESCRIPTION		DATE	BY	REV
XXX	XXX	ENGINEERING RELEASE		-	XXX	00

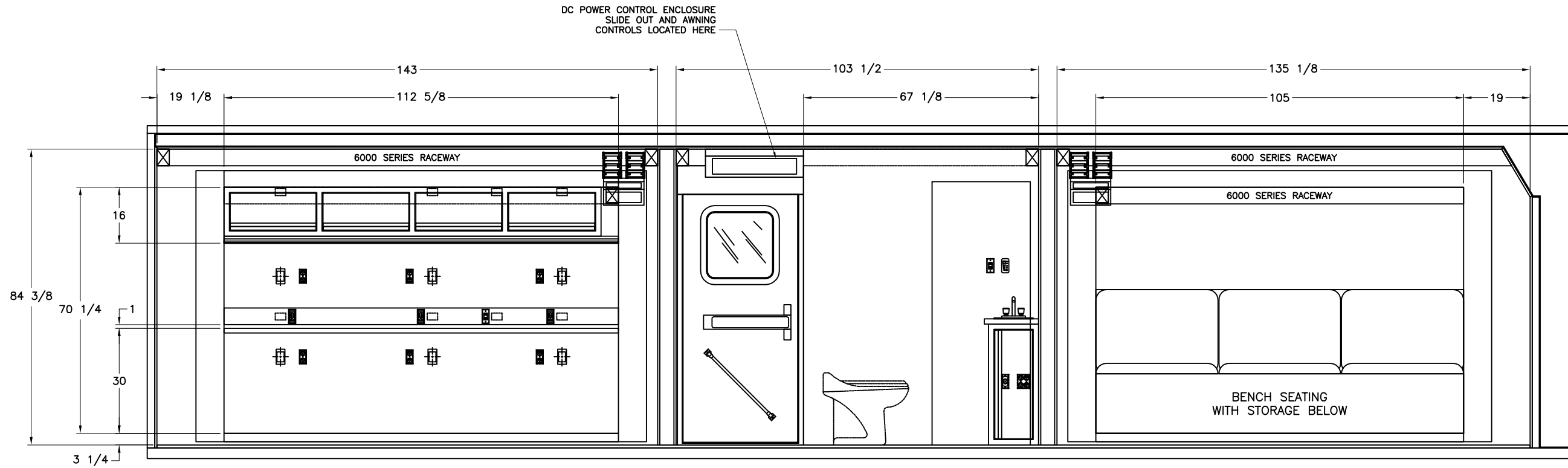


THIS DRAWING IS THE PROPERTY OF FRONTLINE COMMUNICATIONS CORPORATION. IT IS CONFIDENTIAL AND ALL RIGHTS ARE RESERVED. IT SHALL NOT BE REPRODUCED, COPIED, LENT, NOR USED FOR ANY PURPOSE OTHER THAN THAT FOR WHICH IT IS SPECIFICALLY FURNISHED.

DO NOT SCALE THIS DRAWING DIMENSIONS ARE IN INCHES UNLESS OTHERWISE SPECIFIED		MATERIAL SEE NOTES		 <p>12770 44th Street North Clearwater, FL 33762-4713 (727) 573-0400 FAX (727) 571-3295</p>	
TOLERANCES: ANGULAR: ± 1° BEND: ± 1° 2 PLACE DECIMAL ± .010 3 PLACE DECIMAL ± .005 FRACTIONS ± 1/16		FINISH MILL FINISH			
JOB NUMBER OR PRODUCT LINE 91818		DRAWN BY MRS	DATE 11/28/18	INTERIOR LAYOUT FLOOR SIZE DWG NO. B 91818-40100	
SHEET 1 OF 1	SCALE 35	CHECKED BY RPM	DATE 12/18/18		

REVISIONS

CHK DATE	CHK BY	DESCRIPTION	DATE	BY	REV
XXX	XXX	ENGINEERING RELEASE	-	XXX	00

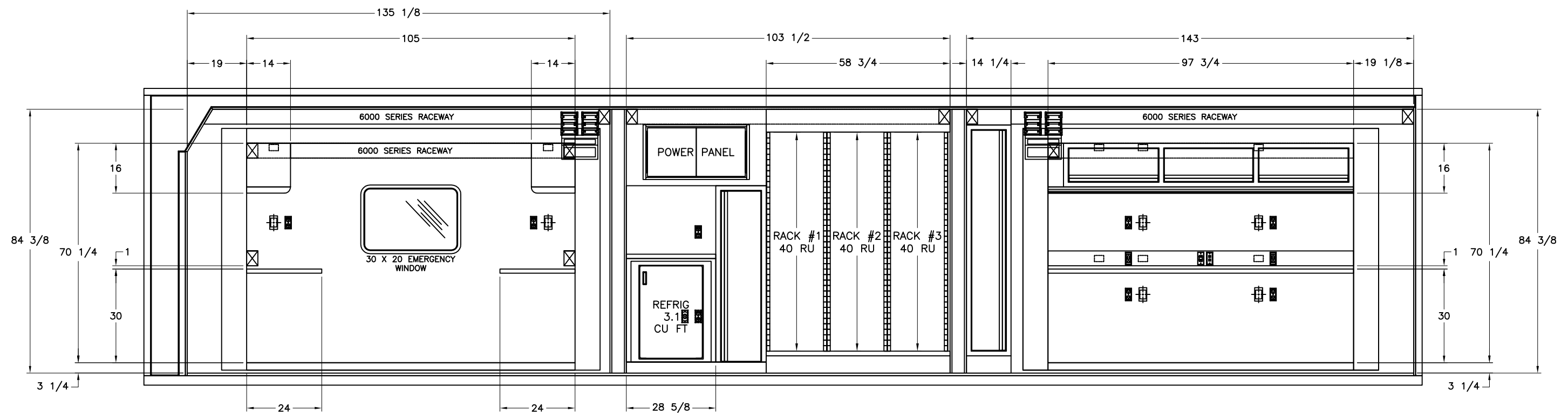


- DIMMER SWITCH (LED LIGHTS)
- 120V AC POWER / USB POWER
- 120V AC POWER (DUPLEX)
- 12V DC POWER
- WATER TANK LEVEL DISPLAY
- LOW VOLTAGE DEVICE RING (SYSTEM)
- 120V AC POWER (QUAD)

THIS DRAWING IS THE PROPERTY OF FRONTLINE COMMUNICATIONS CORPORATION. IT IS CONFIDENTIAL AND ALL RIGHTS ARE RESERVED. IT SHALL NOT BE REPRODUCED, COPIED, LENT, NOR USED FOR ANY PURPOSE OTHER THAN THAT FOR WHICH IT IS SPECIFICALLY FURNISHED.

DO NOT SCALE THIS DRAWING DIMENSIONS ARE IN INCHES UNLESS OTHERWISE SPECIFIED		MATERIAL SEE NOTES		 12770 44th Street North Clearwater, FL 33762-4713 (727) 573-0400 FAX (727) 571-3295 An Oshkosh Corporation Company	
TOLERANCES: ANGULAR: ± 1° BEND: ± 1° 2 PLACE DECIMAL ± .010 3 PLACE DECIMAL ± .005 FRACTIONS ± 1/16		FINISH MILL FINISH			
JOB NUMBER OR PRODUCT LINE 91818		DRAWN BY MRS	DATE 11/28/18	INTERIOR LAYOUT CURB SIDE	
SHEET 1 OF 1	SCALE 35	CHECKED BY RPM	DATE 12/18/18		

REVISIONS					
CHK DATE	CHK BY	DESCRIPTION	DATE	BY	REV
XXX	XXX	ENGINEERING RELEASE	-	XXX	00



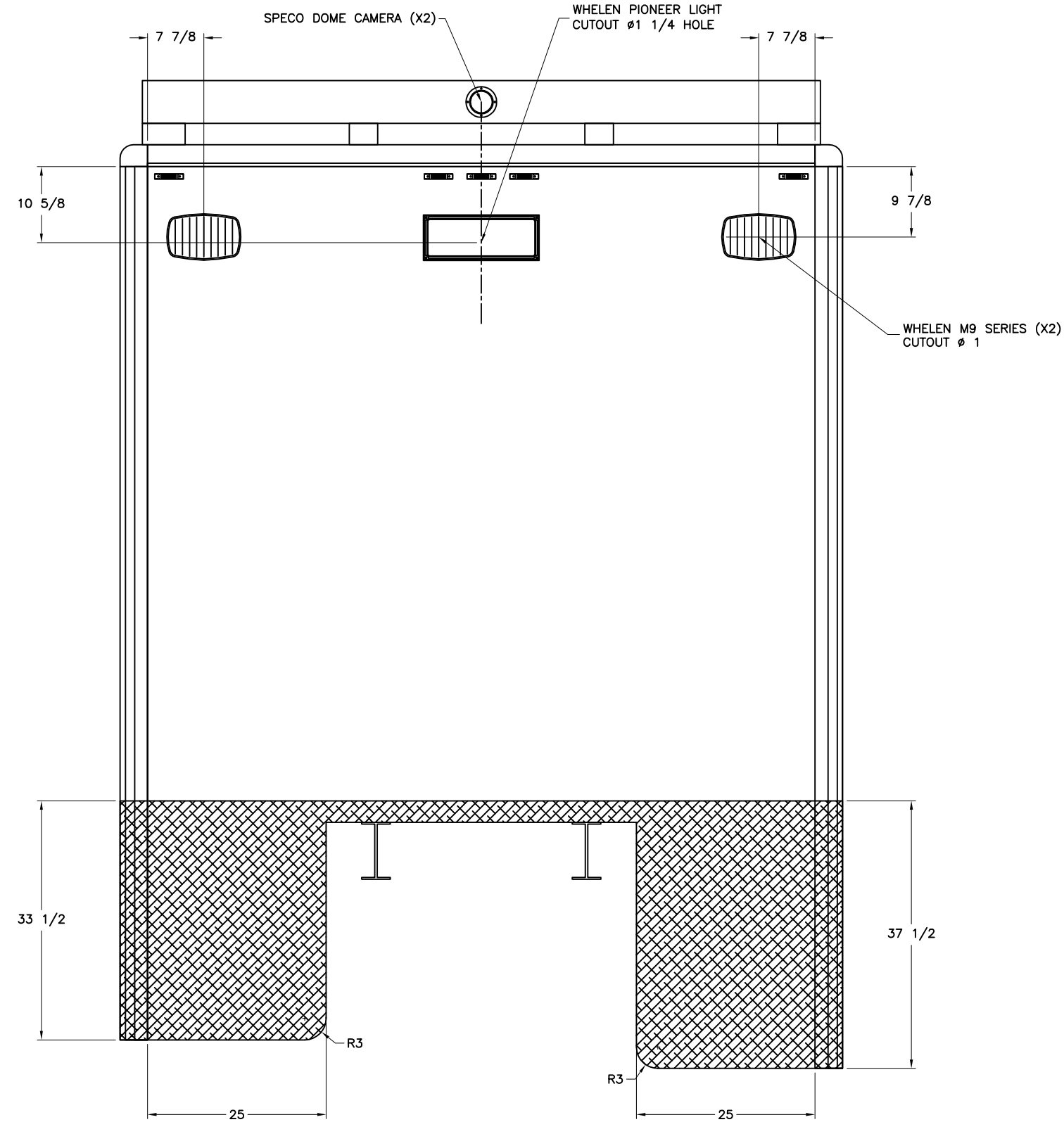
- DIMMER SWITCH (LED LIGHTS)
- 120V AC POWER / USB POWER
- 120V AC POWER (DUPLEX)
- 12V DC POWER
- WATER TANK LEVEL DISPLAY
- LOW VOLTAGE DEVICE RING (SYSTEM)
- 120V AC POWER (QUAD)

THIS DRAWING IS THE PROPERTY OF FRONTLINE COMMUNICATIONS CORPORATION. IT IS CONFIDENTIAL AND ALL RIGHTS ARE RESERVED. IT SHALL NOT BE REPRODUCED, COPIED, LENT, NOR USED FOR ANY PURPOSE OTHER THAN THAT FOR WHICH IT IS SPECIFICALLY FURNISHED.


DO NOT SCALE THIS DRAWING DIMENSIONS ARE IN INCHES UNLESS OTHERWISE SPECIFIED		MATERIAL SEE NOTES		 12770 44th Street North Clearwater, FL 33762-4713 (727) 573-0400 An Oshkosh Corporation Company FAX (727) 571-3295	
TOLERANCES: ANGULAR: ± 1° BEND: ± 1° 2 PLACE DECIMAL ± .010 3 PLACE DECIMAL ± .005 FRACTIONS ± 1/16		FINISH MILL FINISH			
JOB NUMBER OR PRODUCT LINE 91818		DRAWN BY MRS	DATE 11/28/18	INTERIOR LAYOUT STREET SIDE SIZE DWG NO. B 91818-40300	
SHEET 1 OF 1	SCALE 35	CHECKED BY RPM	DATE 12/18/18		

REVISIONS

CHK DATE	CHK BY	DESCRIPTION	DATE	BY	REV
XXX	XXX	ENGINEERING RELEASE	-	XXX	00

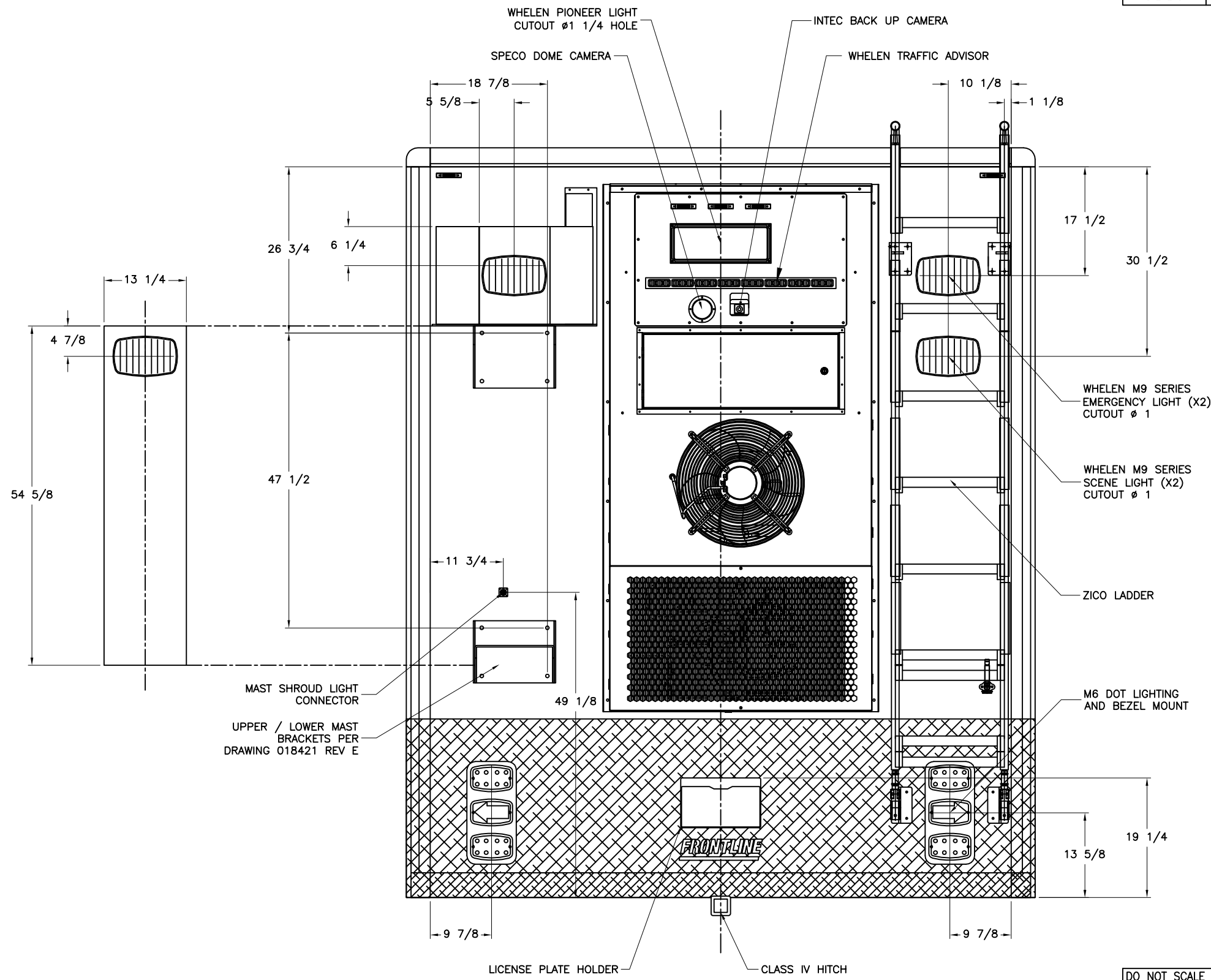


THIS DRAWING IS THE PROPERTY OF FRONTLINE COMMUNICATIONS CORPORATION. IT IS CONFIDENTIAL AND ALL RIGHTS ARE RESERVED. IT SHALL NOT BE REPRODUCED, COPIED, LENT, NOR USED FOR ANY PURPOSE OTHER THAN THAT FOR WHICH IT IS SPECIFICALLY FURNISHED.

DO NOT SCALE THIS DRAWING DIMENSIONS ARE IN INCHES UNLESS OTHERWISE SPECIFIED		MATERIAL SEE NOTES		 12770 44th Street North Clearwater, FL 33762-4713 (727) 573-0400 FAX (727) 571-3295 An Oshkosh Corporation Company	
TOLERANCES: ANGULAR: ± 1° BEND: ± 1° 2 PLACE DECIMAL ± .010 3 PLACE DECIMAL ± .005 FRACTIONS ± 1/16		FINISH MILL FINISH		EXTERIOR LAYOUT FRONT WALL	
JOB NUMBER OR PRODUCT LINE 91818		DRAWN BY MRS	DATE 10/4/18	SIZE B	DWG NO. 91818-50400
SHEET 1 OF 1	SCALE 20	CHECKED BY RPM	DATE 10/9/18		

REVISIONS

CHK DATE	CHK BY	DESCRIPTION	DATE	BY	REV
XXX	XXX	ENGINEERING RELEASE	-	XXX	00



THIS DRAWING IS THE PROPERTY OF FRONTLINE COMMUNICATIONS CORPORATION. IT IS CONFIDENTIAL AND ALL RIGHTS ARE RESERVED. IT SHALL NOT BE REPRODUCED, COPIED, LENT, NOR USED FOR ANY PURPOSE OTHER THAN THAT FOR WHICH IT IS SPECIFICALLY FURNISHED.

DO NOT SCALE THIS DRAWING	
DIMENSIONS ARE IN INCHES UNLESS OTHERWISE SPECIFIED	
TOLERANCES:	
ANGULAR: ± 1°	BEND: ± 1°
2 PLACE DECIMAL	± .010
3 PLACE DECIMAL	± .005
FRACTIONS	± 1/16
JOB NUMBER OR PRODUCT LINE	91818
SHEET	1 OF 1
SCALE	20

MATERIAL		SEE NOTES
FINISH		MILL FINISH
DRAWN BY	MRS	DATE
		10/4/18
CHECKED BY	RPM	DATE
		10/9/18

		12770 44th Street North Clearwater, FL 33762-4713 (727) 573-0400 FAX (727) 571-3295	
<h2>EXTERIOR LAYOUT REAR WALL</h2>			
SIZE	DWG NO.		
B	91818-50500		