

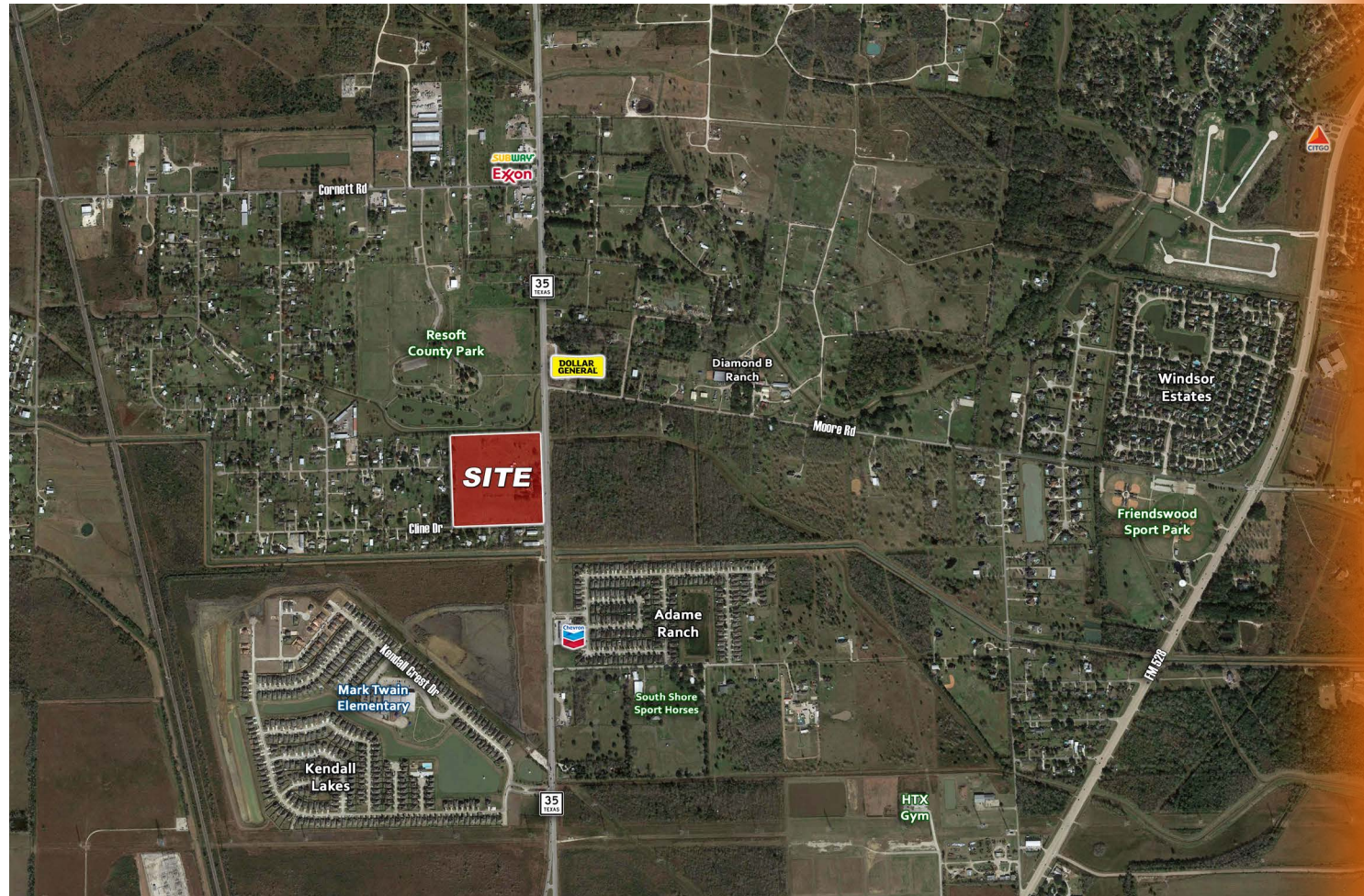
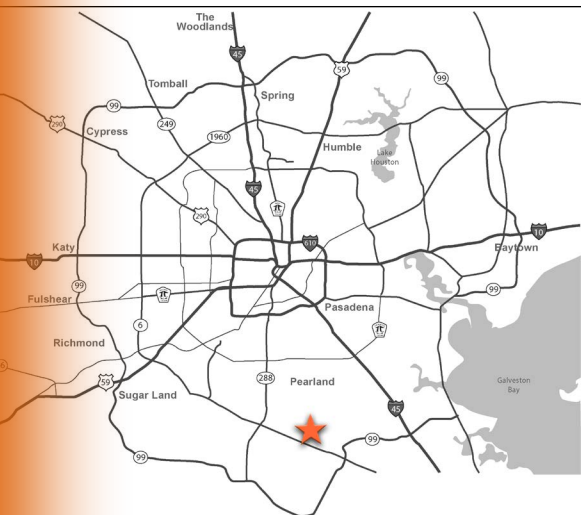
HIGHWAY 35 LAND

5675 HIGHWAY 35 NORTH, ALVIN, TEXAS 77511

NWC OF HIGHWAY 35 & CLINE DRIVE

PROPERTY INFORMATION:

- 20-/+ Acres For Sale or Lease
- Ideal Uses: Residential Subdivision, Industrial, Etc.
- Adjacent to Resoft County Park
- Call Broker for Pricing



Contact: Campbell Anderson
915.433.4853
canderson@orrinc.com

Greg Lee
281.299.5764
glee@orrinc.com



Tel: 713.468.2600 | Fax: 713.468.7774
4601 Washington Ave., Suite 220
Houston, Texas 77007

The information contained herein was obtained through sources deemed reliable; however, Orr Realty Corporation makes no guarantees, warranties, or representations as to the completeness or accuracy thereof. The presentation of this property is submitted subject to errors, omissions, change in design, change of price prior to sale or lease, or withdrawal without notice.

HIGHWAY 35 LAND

5675 HIGHWAY 35 NORTH, ALVIN, TEXAS 77511

Demographics:

1 Mile Radius

2019 Population: 2,339
 5 Yr. Proj. Growth: 14.55%
 Households: 794
 Med. Home Value: \$186,688
 Avg HH Income: \$82,177

3 Mile Radius

2019 Population: 18,280
 5 Yr. Proj. Growth: 9.65%
 Households: 5,893
 Med. Home Value: \$202,293
 Avg HH Income: \$100,641

5 Mile Radius

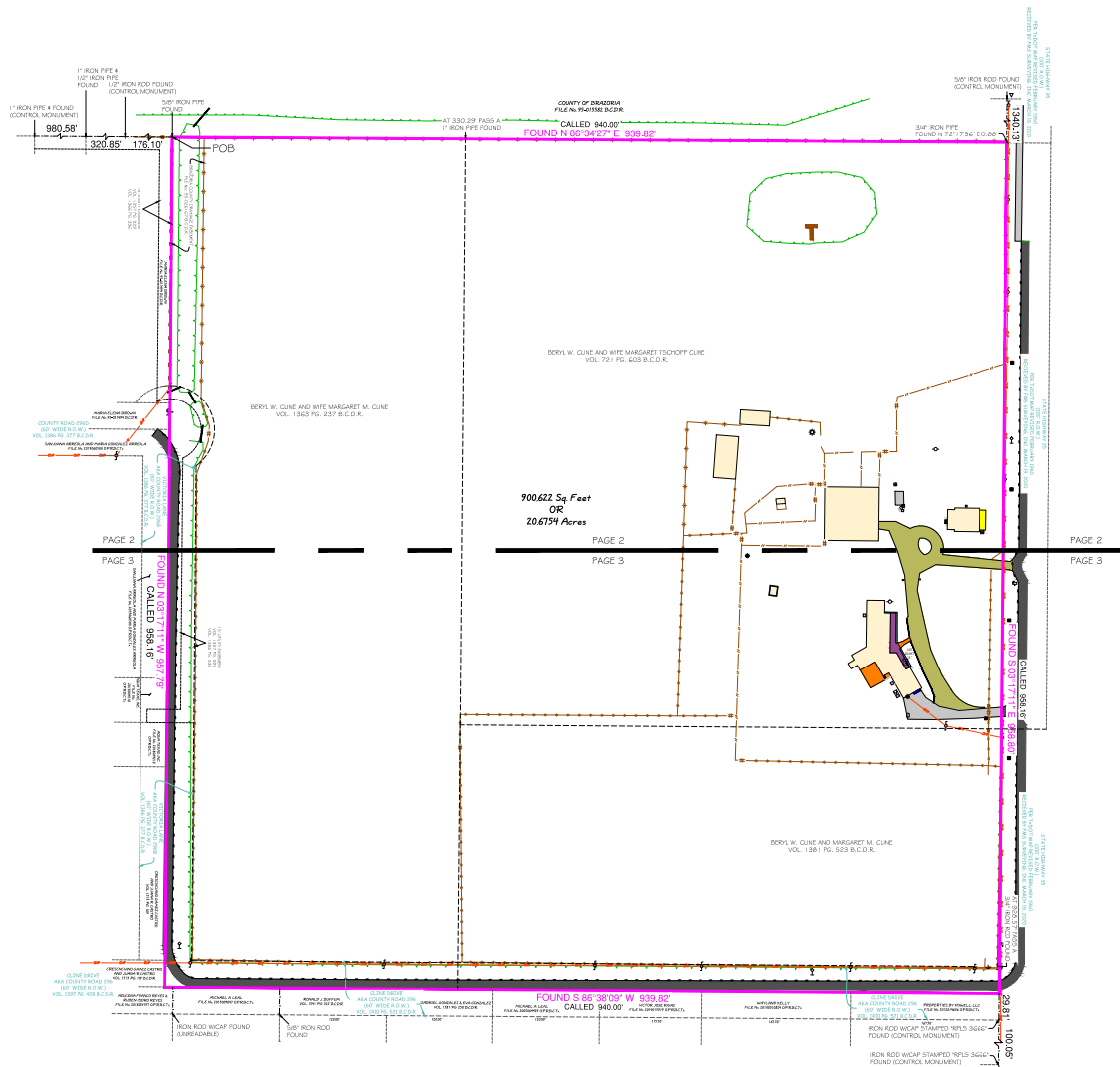
2019 Population: 76,530
 5 Yr. Proj. Growth: 7.2%
 Households: 25,923
 Med. Home Value: \$221,735
 Avg HH Income: \$114,149

Traffic Counts:

Highway 35 (north of site)
 23,859 VPD (TXDOT 2016)

Highway 35 (south of site)
 21,337 VPD (TXDOT 2018)

Highway 6 @ Gordon St
 31,017 VPD (TXDOT 2018)

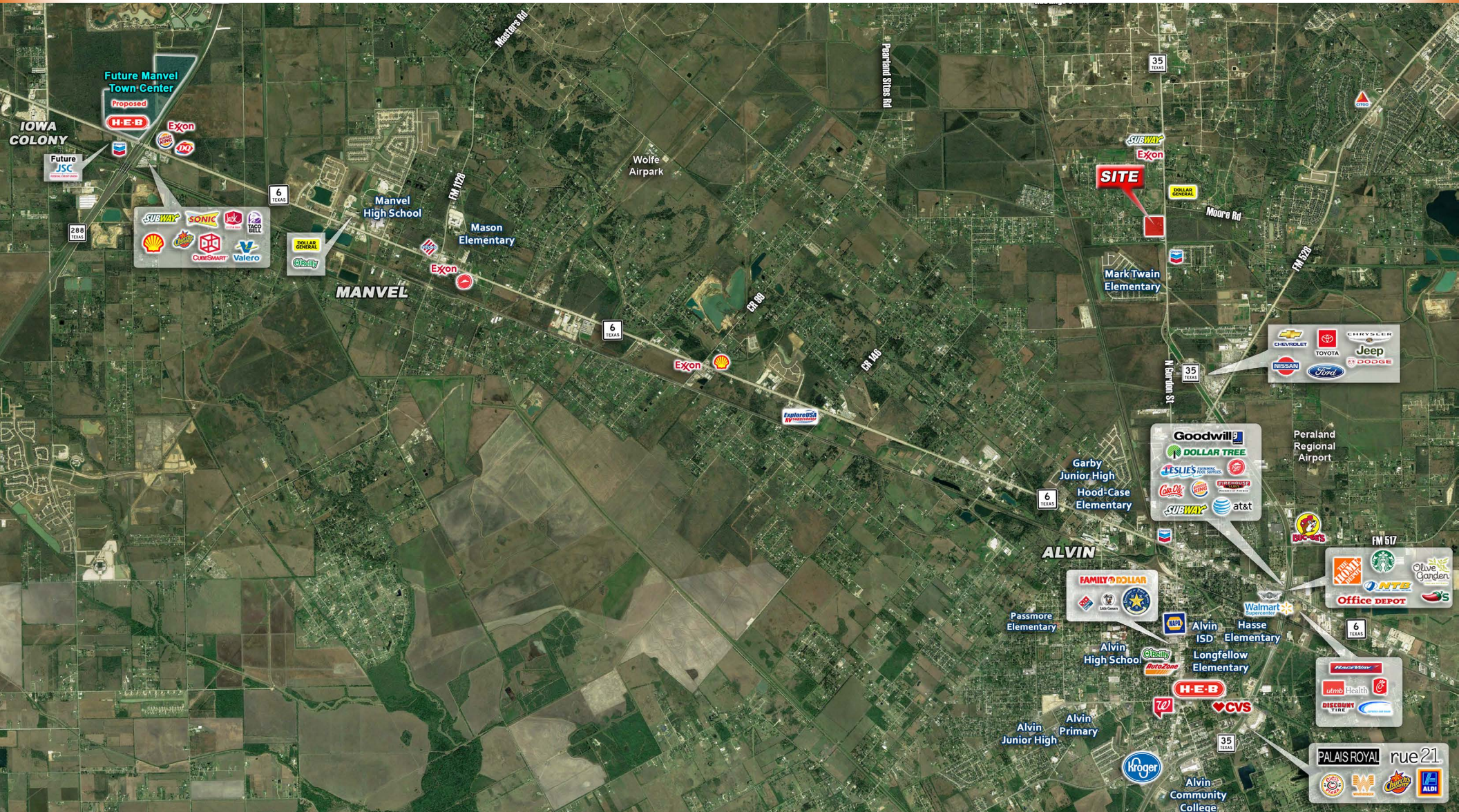


Contact: Campbell Anderson
 915.433.4853
 canderson@orrinc.com

Greg Lee
 281.299.5764
 glee@orrinc.com

HIGHWAY 35 LAND

5675 HIGHWAY 35 NORTH, ALVIN, TEXAS 77511



Contact: Campbell Anderson
915.433.4853
canderson@orrinc.com

Greg Lee
281.299.5764
glee@orrinc.com



Tel: 713.468.2600 | Fax: 713.468.7774
4601 Washington Ave., Suite 220
Houston, Texas 77007