

See accompanying sketches on last page while reading below:

## **Showroom**

We have a large almost bare room circe 20 m x 4m with a single box office 4m x 3m in the far left corner, which needs the installation of one wall mounted Mitsubishi air conditioning unit which must be fist disconnected from its existing position some 3M away. preparing and decorating.

On the entrance wall to the right, we require the installation of one or two 2m high by 3m wide 'picture windows, that will allow viewing of the stairwell. Sizes are approximate and these can be simple stock / off-the-shelf uPVC double glazed units.

In the near centre of this room is a fixed network cabinet 1m x 1m, which needs 'boxing in' floor to ceiling with a near full height access door but also the whole box should be removable (with tools if required) to allow for rare maintenance. An adapted oven kitchen unit may suffice for example.

From this box stretching across the width of the room is a sliding / folding partition, which needs installing, noting the ceiling is a standard 600mm x 600mm suspended. We need advice on this.

On the walls we require 12 removable display boards 2.4m x 1.2m (standard size), where two boards must be sliding (left to right) to cover the windows (allowing *black out* for presentations). Each board will be hollow behind to allow access for electrical wiring and fixing of our lighting products and suggest use of simple stud partitioning (see inset).

## **Lobby and Stairs**

The lobby is 3m wide and 4 meters deep, with 1.3m stairs to the left (12 steps) leading to a halfway landing and stairs continue around to the right (12 steps). In the lobby to the right of the stairs, we require the building of a simple cupboard, allowing access under the stairway and under the halfway landing part, to be used as a storage area. Noting from the sketch the cupboard 'protrudes' from under the landing part into the lobby to maximise the storage area.

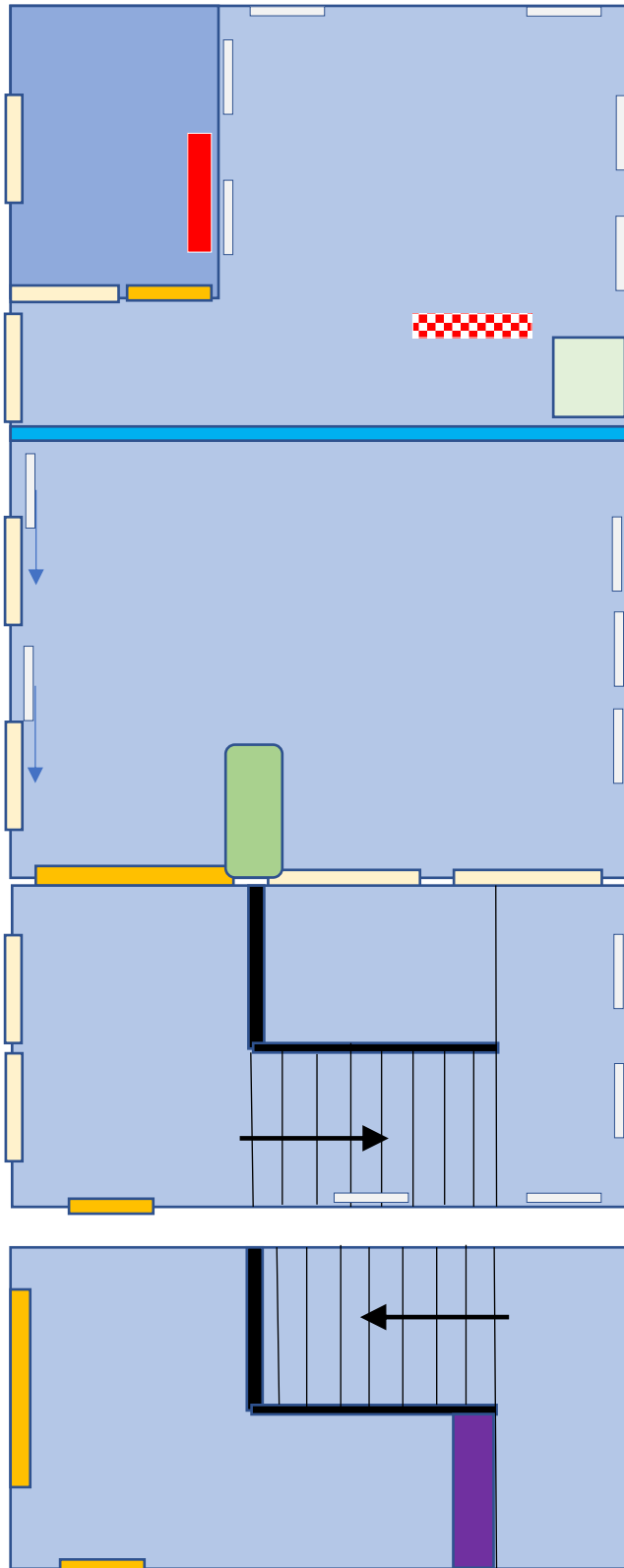
The lobby then requires simple decorating.

Continuing up the stairs onto the top 3m wide by 3m deep landing and looking back into the stairwell, we see the newly installed picture windows to the left a 3m wide x 5m high back wall and to the right a standard stairway side wall. All requires simple decorating.

The back wall requires 2 x removable display boards 2.4m x 1.2m and the right-side wall 1 x removable display board 2.4m x 1.2m and one half height 1.2m x 1.2m removable display board.

**Showroom** (top sketch), **Stairs Landing** (middle sketch) and **Lobby** (bottom sketch)

Sketch is NOT to scale and NOT to full proportion, it's only a reasonably accurate representation – see text for accurate dimensions.

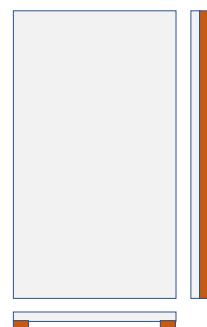


**Colour Key:**

- Pale Blue = floor area
- Darker Blue = office
- Sky Blue = folding / sliding partition
- Pale Yellow = windows
- Orange = doors
- Pale Green = 'patch' Cabinet
- Green = Counter Cupboard
- Pale Grey = Display board
- Brown = Studding
- Red Check = Air Conditioner existing
- Red = Air Conditioning new position
- Black = balcony and stairs
- Purple = extended under-stair cupboard

**Dimensions: L x W (x H) mm**

- Room 20300 x 7100
- Office 4200 x 3000
- Cabinet 1000 x 1000
- Windows existing 900W x 1300H
- Windows new 2000W x 1000H
- Door entrance 1300W x 2000H
- Landing 3000 x 2700
- Stairs 2600 x 1300
- Half Landing 3000 x 1200
- Lobby 3000 x 3000
- Display board 1200W x 2400H
- Display board studding 75mm x 50mm



Display board showing addition of side studding to provide hollow back.