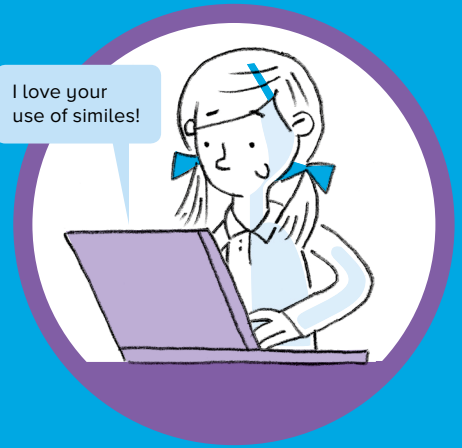


Fab feedback!

Good feedback should be like a sandwich in three parts...

I love your use of similes!



Start positive

Say something you like.
Be specific and give examples.

I like the way you set the scene using 'wind whistling' and 'tall, garled trees'. I can picture it in my head.



Make a suggestion

Could this be even better if you used subheadings? Such as 'What's on the menu?'



Finish with encouragement

I'm excited to read your next piece of work!

