

# Getting started with Zoelnsights

A step-by-step guide for creating an account  
for your pet



# Getting started with Zoelnsights: documenting a pet's health journey

Whether you've had a furry friend for years, or have recently got one, you quickly learn how many papers and emails you get with their health information. Often it's overwhelming, and can be hard to know where to keep everything, especially if you travel at all with your pet.

This guide will provide examples of how you can use Zoelnsights to help you as you navigate through your pet's health journey. Ultimately, our goal is to help you track, monitor and make sense of your pet's health information to help you and your pet live your best possible lives.



1

# Create an account for your pet on Zoelnsights



All you need is an email account

Since your pet (likely?) does not have an email address, use an email **alias** for your pet.



## What is an email alias?

An alias is essentially a forwarding email address that comes to your inbox. Almost all email service providers have this provision for its users.



## Check out this article

A step-by-step guide for creating an email alias for every major email provider including Gmail, Outlook etc.

[Click here to read the article.](#)

[Click here to join Zoelnsights](#)

OR



Google Play



App Store

A screenshot of the Zoelnsights app interface. The left side shows a login/sign-up form with fields for First Name, Last Name, Email Address, Password (8+ Characters), and Confirm Password. It includes a 'Login' link for already signed-up users, a 'Sign Up' button, and a checkbox for accepting the User License Agreement. The right side features a 'Zoelnsights for health management' section with six cards: 'Manage Routines' (with a plus icon), 'Track your Health Data' (with a clock icon), 'Create custom Graphs' (with a bar chart icon), 'Stay connected' (with a group of people icon), 'Privacy Matters' (with a shield icon), and a 'Learn How' link. At the bottom, there is a 'Need Help? Contact Us' section with an email address and a phone number.






## Verify your pet's email address



Verify your pet's email address by sending yourself a 6 digit verification code.




This is an important step to secure and validate your account. No one wants their pet to get hacked...

  
 **Verify your email** 

Send a verification code to your email address

Email Address \*

Willow@gmail.com



Enter the 6-digital verification code sent your email address


Skip For Now

# 3

## Login and set up your pet's account

Add in any health information about your pet, such as vaccinations, how much they weigh, and what medications they are on. You can skip this and return later if you want.

**ZoeInsights: Let's Setup your account!**Close

<input type="checkbox"/> Profile and Medical Condition(s)	<div>Setup your profile and add your medical condition(s)</div> <div>By adding your profile information and medical conditions you can customizing your journal.</div>  <div>Setup Now</div>
<input checked="" type="checkbox"/> Medications, Supplements & Activities	
<input checked="" type="checkbox"/> Symptom(s)	
<input checked="" type="checkbox"/> Track your Health Data	
<input checked="" type="checkbox"/> Create a new Routine	

Get to know your [Dashboard](#)

JC

Dashboard

Tasks & Questions

Journals

Graphs

Contacts & Careteam

Caregivers

MY HEALTH TRACKING

Meds/Supplements & Activities

Routines

Symptoms

Health Data

MY DOCUMENTS

Attachments

Reports

MY HEALTH RESEARCH

Health Library

Clinical Trials

Surveys

HELP AND SUPPORT

Open Setup Wizard

Dashboard >

+ Add Caregiver

14 days left - FREE premium trial

My Health Graph + Add

Complete a Journal Entry + Add

Lab & Reports

Quick Note

MY HEALTH ROUTINES

Checkin - Morning

Checkin - Evening

QUICK RECORD MEDICATIONS/SUPPLEMENTS & ACTIVITIES + Add

Physical Exercise

Feedback

+

## Create Quick Notes



Use this feature to quickly record information, like vet appointments, licencing, etc.

- Give your Quick Note a name
- Enter your notes
- Click on the + Add **Attachment** button
- Upload a file or Take a photo of your **pet's vaccinations and check-ups!**
- This file or photo will be now attached to your journal
- Save it to see it in your list of journals!

1:09

← + Add Caregiver

Write a Quick Note

Attachment

Cancel Save



Attachments can include photos, pdf files, reports, referrals etc.

Anything you want!



# 5

## Setup a Routine and complete a Journal entry

1

Go to [Routines](#) and click +Add

2

Add any element to the routine you want to track including custom [Medication](#), [Supplement](#), [Activity](#), [Symptom](#) or [Health Data](#)

3

Set a reminder for the [Routine](#) and receive emails and push notifications reminding about it

4

After you hit "Save" you will see it on your [Dashboard](#)

5

Click on your [Routine](#) and complete a [Journal](#) entry

The screenshot shows the 'Willows Medication' routine setup screen in the ZOE Insights app. The top status bar shows the time as 5:42. The app bar includes a back arrow, a '+ Add Caregiver' button, and notification and share icons. The main form has two text input fields: 'Journal Name' with the value 'Willows Medication' and 'Journal Description' with the value 'Updates of daily medication'. Below these fields are two tabs: 'Journal' (selected) and 'Attachments'. Under the 'Journal' tab, there is a section titled 'Medications/Supplements' with a dropdown arrow. Below this, there are three input fields: 'Quantity' (1), 'Medication' (Carprofen), and 'Unit' (Capsule). To the right of these fields is a green checkmark icon. Below these fields is a search bar with the text 'Enter Medication/Supplement' and a question mark icon. The search bar contains the text 'Deracoxib'. Below the search bar is a dropdown menu with the text 'Create custom' and 'Deracoxib'. Below the dropdown menu are five buttons with plus signs and right arrows: 'Activity', 'Symptoms', 'Health Data', 'Notes', and 'Tasks and Questions'.

# Create Custom Reports

6

12:46

← + Add Caregiver

Edit Report

Title  
Report for appointment

View By:

☐ All ☐ 1 month ☐ 3 months ☒ Custom

Start Date: 30 Sep '20

End Date: 16 Oct '20

Symptoms >

Questions >

Medications/Therapies >

Images/Documents v

Title

Add image/document +

Dashboard Tasks & Q. Journals More

1

Go to reports and click + Add

2

Make a custom title for your Report and select the time frame for it.

3

Customize your pet's Symptoms, Medications and therapies. This is also where you can review all the Questions you've entered since the last appointment.

4

Upload images/documents and attach Zoelnsights generated graphs

5

Finally, generate your customized Report



## Extra Resources



How pet owners can create emails for their pet's:

<https://www.popsci.com/set-up-email-alias/>

Extra pet care resources:

<https://www.petplace.com/>

<https://www.pethealthnetwork.com/>

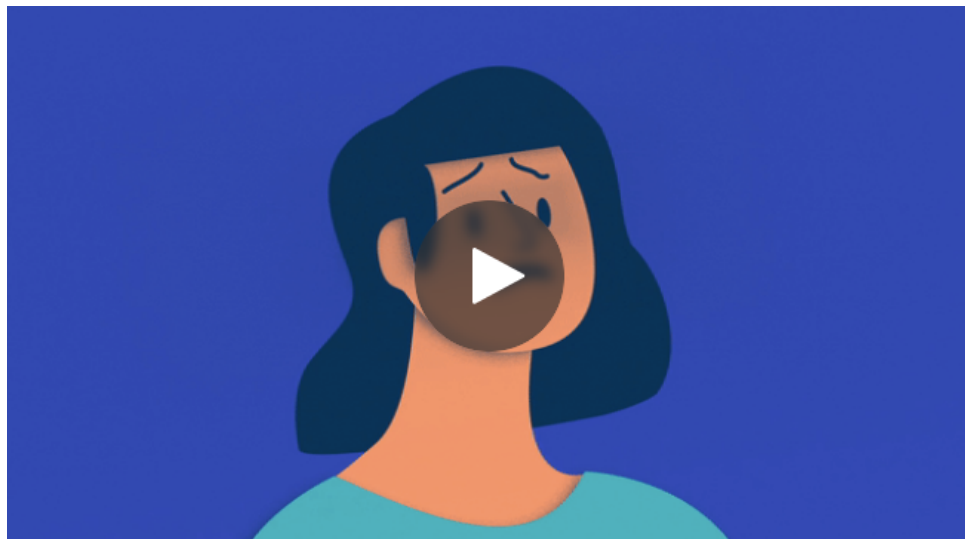


## ZoeInsights Support

[Website](#)

[Tutorials](#)

[Getting Started Video](#)



We LOVE pet's here at ZoeInsights,  
so take a picture of your furry friend and tag us on social  
media!

Follow ZoeInsights social media to stay up to date

