



VX805 Setup Using Sterling and EMV – Pro 9

“GETTING STARTED GUIDE”

Contents

Assemble and Configuring the VX805:..... 3

Install the VX805 Driver:..... 6

Configure EDC in CAP:..... 7

Assemble and Configuring the VX805:

- You will need a small Philips screwdriver for this.

1. Unscrew the back plate. *(See image below)*



2. Plug in the USB cable. *(See image below)*



3. Replace the back plate and tighten the screw. (See image below)



4. It is necessary to verify the VX805 is properly configured for USB. To verify this setting, plug the VX805 into your CAP computer. You will notice the VX805 will begin to initialize. (See image below)

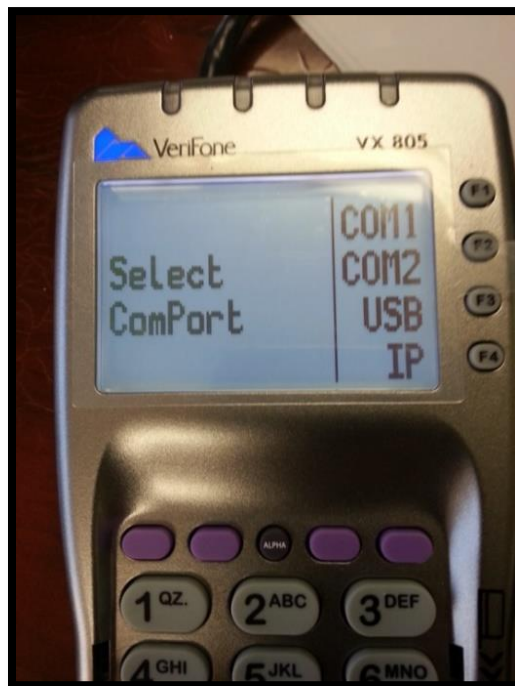


- Once the VX805 screen shows the XPI load, press the **Alpha** and **8** buttons at the same time on the device. (See image below)



*** EMV Support requires XPI version 8.30 G or 8.42B or higher (XPI Load versions are current as of 10/01/2015). Contact Sterling if you have the incorrect XPI version.**

- Select **USB** by pressing the **F3** button on the VX805. (See image below)



7. The VX805 is now set to USB. Unplug your device and move to the next step.

***CAP highly recommends purchasing the optional stand for stability when inserting Chip cards.**

Install the VX805 Driver:

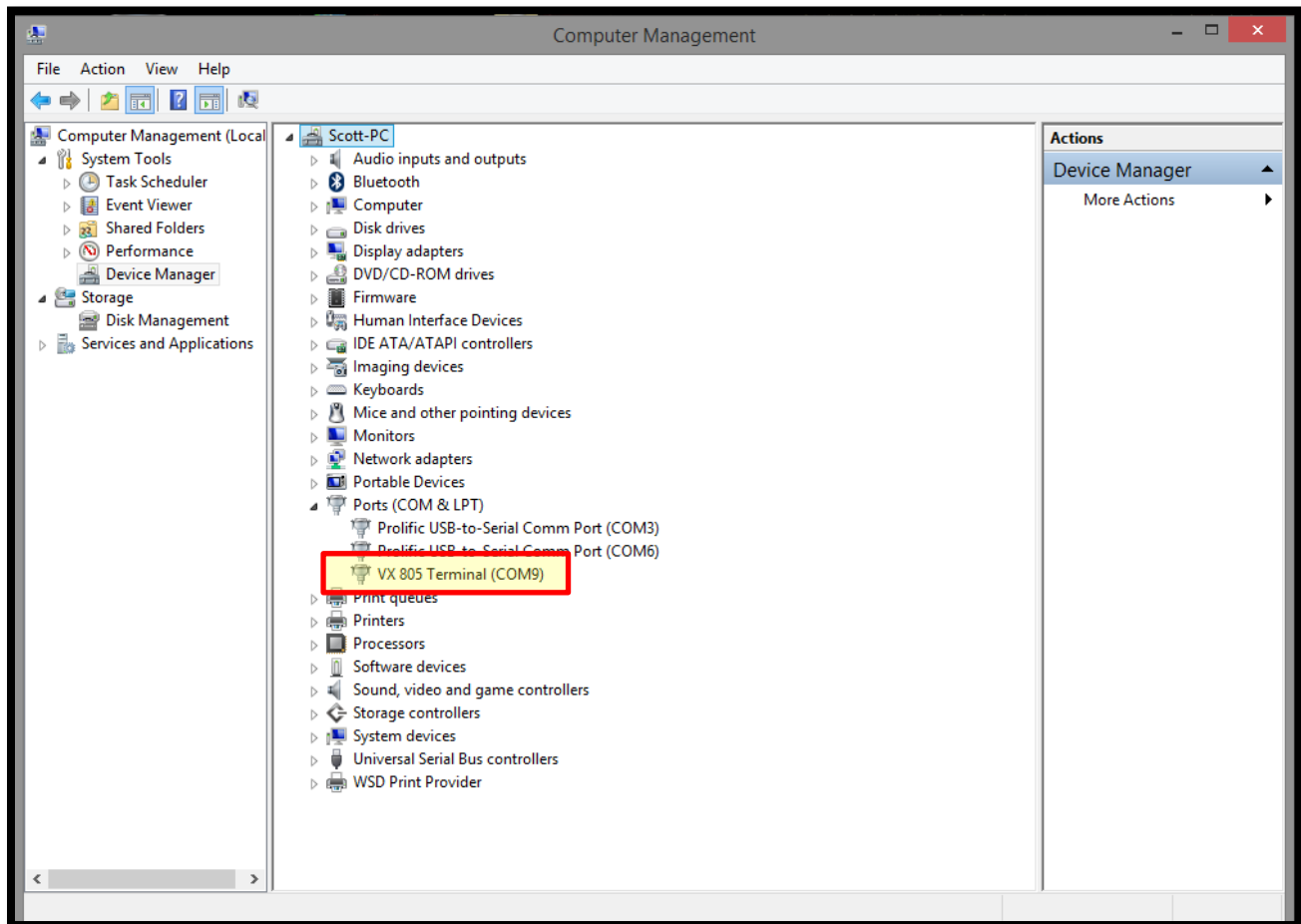
➤ Download and install the USB to serial drivers. This will create a virtual com port. **This must be done on each station processing credit cards.**

1. Please follow the link below to install the VX805 driver:

<http://www.capsupport.com/drivers/verifone/Vx805.zip>

2. Once the driver is installed, plug in the VX805 and allow Windows to identify the driver to complete the install.

3. Verify the com port setting once complete in the Windows Device Manager. (See image below). You should see the VX805 listed under Ports. Make a note of the COM number.



***If you are not on Pro 9 already, please contact your reseller or CAP for assistance.**

www.capretail.com, sales@capretail.com, support@capretail.com
(800) 826-5009, Monday through Friday, 8:30am-5:30pm Central Time

Configure EDC in CAP:

- Once installed, open the Pro 9 Toolbar. Go to **Help>Configuration>Tender Settings> EDC**.
(See image below)

Set up EDC

Select EDC Method

Details

(1) Mercury Payment Server	Sterling Used For Credit Card Authorization	Yes
(2) NETePay Server	Merchant ID	70000000245
(3) Sage Exchange	Accept Debit Card	Yes
(4) PC-EFTPOS	Require Credit Verify Number (CVV) when Card number is manually keyed in	No
(5) Sterling Payment Server	Verify Address, Zip code (AVS) when Card number is manually keyed in	No
(6) Pax	Terminal ID	002
	Sterling/MPS Server Name	POS1
	SecureDeviceID	EMV_VX805_PAYMENTTECH
	Pad ID	VX805
	Tokens Enabled	No
	Support Partial Approval	No
	Use EMV	Yes
	Allow Tips	No

Select EDC Device

Verifone VX805 - Paymentech

Select COM Port

Com9

F1 Help EMV Device Setup F10 Accept Esc Cancel

- Highlight **Sterling Payment Server** and set **Sterling Used for Credit Card Authorization** to **Yes**.
- Enter your **Merchant ID**.
- Set **Accept Debit Card** to **Yes**.
- Enter the name of the computer that has NETePay installed into the **Sterling/MPS Server Name** field.
- Select EDC Device: EMV VeriFone VX805 – Paymentech** from the drop down.
- Select COM Port:** Assign the appropriate com port the VX805 was assigned to in the step that the drivers were installed. This can be located in the Windows Device Manager if necessary.
- Set **Tokens Enabled** to No.
- Set **Support Partial Approval** to your preference.
- Set **Use EMV (chip'n' Pin)** to **Yes**.
- Press **Accept** and then verify NETePay is running. This can be found in the task bar if it is not already on your screen.
- A new EMV Device Setup button will appear at the bottom left. Press **EMV Device Setup**. This loads the updated parameters to the VX805. (See image below) **Please note: If NETePay is not running, you will receive an error during this step.**

Set up EDC

Select EDC Method

- (1) Mercury Payment Server
- (2) NETePay Server
- (3) Sage Exchange
- (4) POSnetPOS
- (5) Sterling Payment Server**

Details

Sterling Used For Credit Card Authorization	Yes
Merchant ID	7000000024
Accept Debit Card	Yes
Require Credit Verify Number (CVV) when Card number is manually keyed in	No
Verify Address, Zip code (AVS) when Card number is manually keyed in	No
Terminal ID	00
Sterling/MPS Server Name	POS1
SecureDeviceID	EMV_VX805_PAYMENTECH
Pad ID	VX805
Tokens Enabled	No
Support Partial Approval	No
Use EMV	Yes
Allow Tips	No

Select EDC Device

Verifone VX805 - Paymentech

Select COM Port

Com9

F1 Help EMV Device Setup F10 Accept Esc Cancel

13. The VX805 will initiate a loading process. When finished, the device screen will say 'Welcome' and the setup is complete.