

Configuring the Verifone VX805 in CAP for Mercury Payments

Assembling and configuring the device

You will need a small Philips screwdriver for this.

Unscrew the back plate.



Plug in the cable

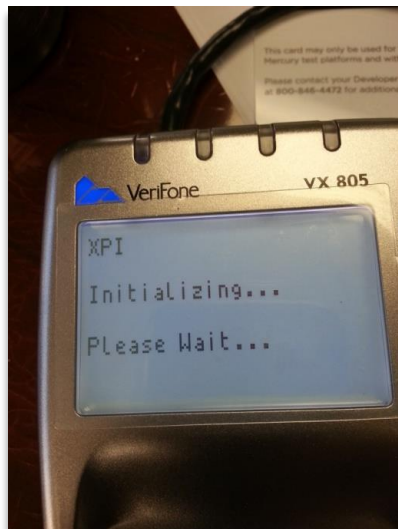


Replace the back plate and tighten the screw

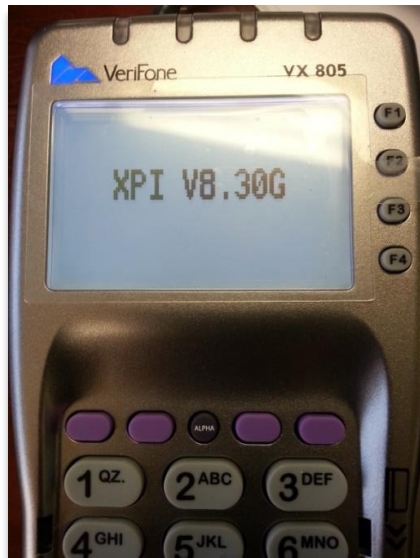


To verify your device is properly configured for USB, Plug the device into your PC.

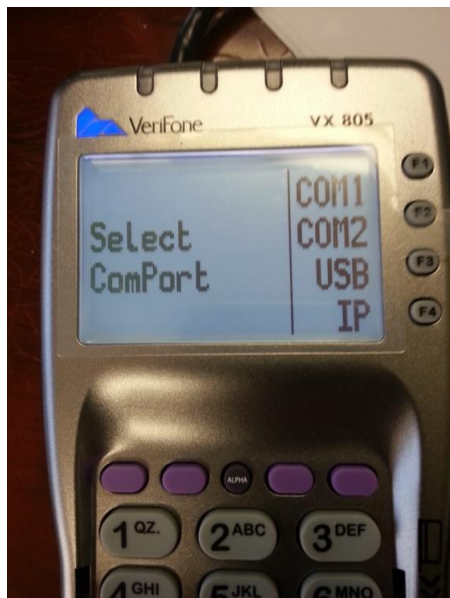
When you see this screen get ready to press Alpha and 8



Press “Alpha” and “8” on this screen



Select USB by pressing the F3 button.



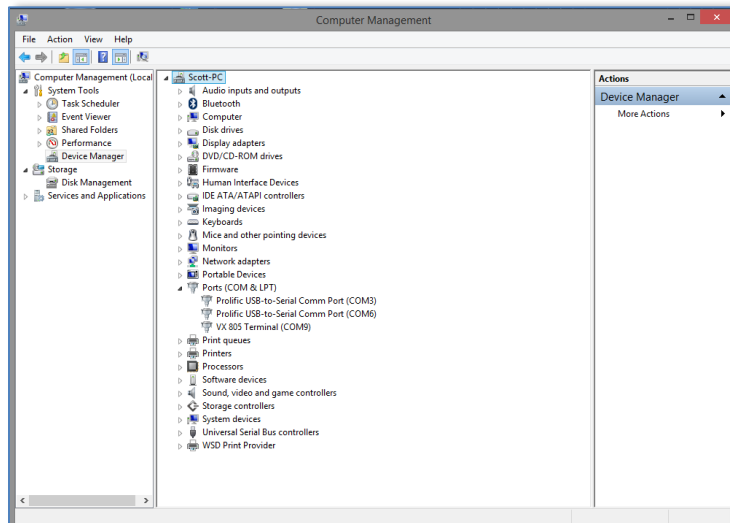
Your device is now set to USB and you are ready to install the driver. Unplug your device and move to the next step.

Installing the Driver

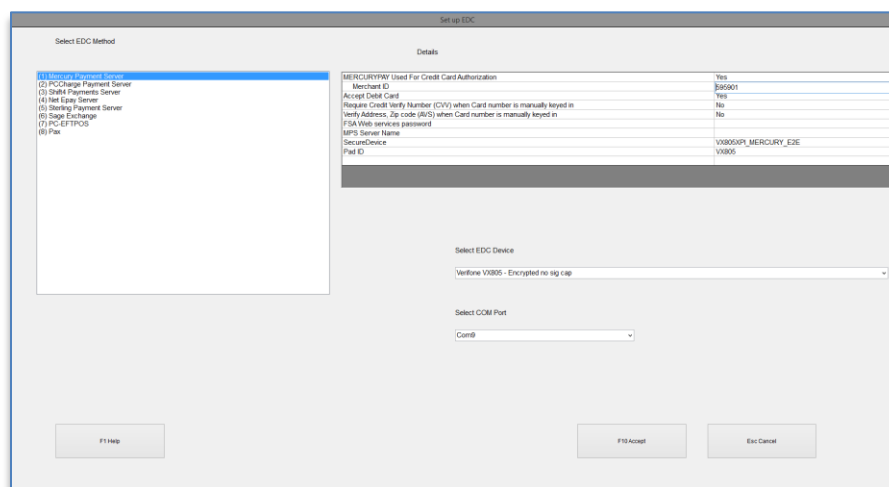
Download and install the USB to serial drivers. This will create a virtual com port. This must be done on each station processing credit cards.

<http://www.capsupport.com/drivers/verifone/Vx805.zip>

Once complete, plug in the device and let Windows identify and install it. Verify the com port setting once complete in the Windows Device Manager.



Go to the CAP Configuration Menu. Select “Tender Settings” then select “EDC” at the bottom.



Select the Verifone VX805 – Encrypted No sig cap option and select the com port you assigned the VX805 to in the step above.

Enter your Merchant ID and press Accept. The device is now setup and ready to use.