

Setting up the Ingenico iSC250 Pinpad via USB in Windows 8



The following documentation will provide instructions for configuring the Ingenico iSC250 Pinpad using a USB connection.

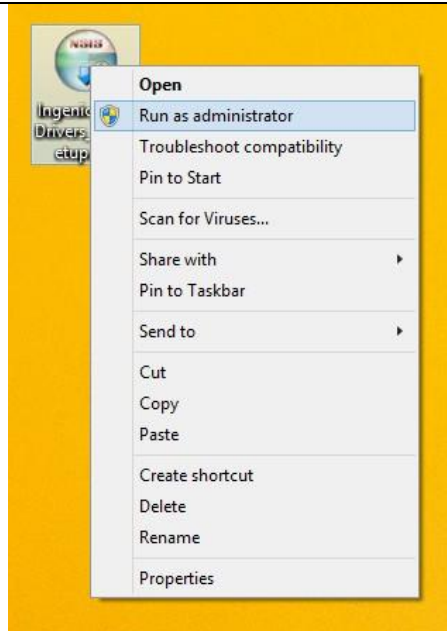
Configuring iSC250 Pinpad Steps:

[Determining which COM port is being used by the USB Cable](#)

Installing the USB Cable Drivers

The driver for the USB cable can be downloaded from:

http://www.capsupport.com/drivers/Ingenico/IngenicoUSBDrivers_2.60_setup.zip



1. Download the zipped file and extract it. Right click on the file and select **Run as Administrator**.



2. Select Next.

Ingenico USB Drivers Package (JUNGO v36) 2.60 Setup

Choose Install Location

Choose the folder in which to install Ingenico USB Drivers Package (JUNGO v36) 2.60.

Setup will install Ingenico USB Drivers Package (JUNGO v36) 2.60 in the following folder. To install in a different folder, click Browse and select another folder. Click Next to continue.

Destination Folder

C:\Program Files\Ingenico\IngenicoUSBDrivers Browse...

Space required: 94.0KB
Space available: 123.3GB

Ingenico (Beyond Payment)

< Back Next > Cancel

3. Select **Next**.

Ingenico USB Drivers Package (JUNGO v36) 2.60 Setup

Usb Driver parameters

This page allows to set parameters used by USB Driver.

☒ Force COM Port Feature enabled

Select by Product ID

Product ID (PID)	Virtual COM Port (decimal range 1-256)
<input type="text"/>	<input type="text"/>
<input type="text"/>	<input type="text"/>
<input type="text"/>	<input type="text"/>
<input type="text"/>	<input type="text"/>

Select by Connection Order (Enter decimal Value of COM port)

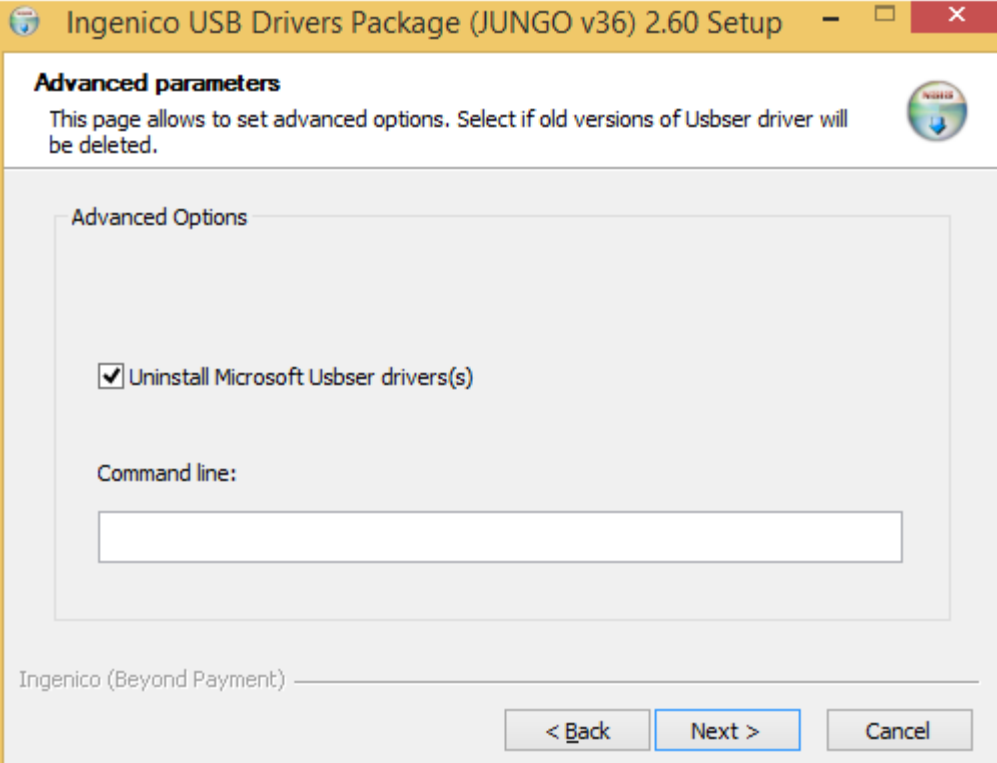
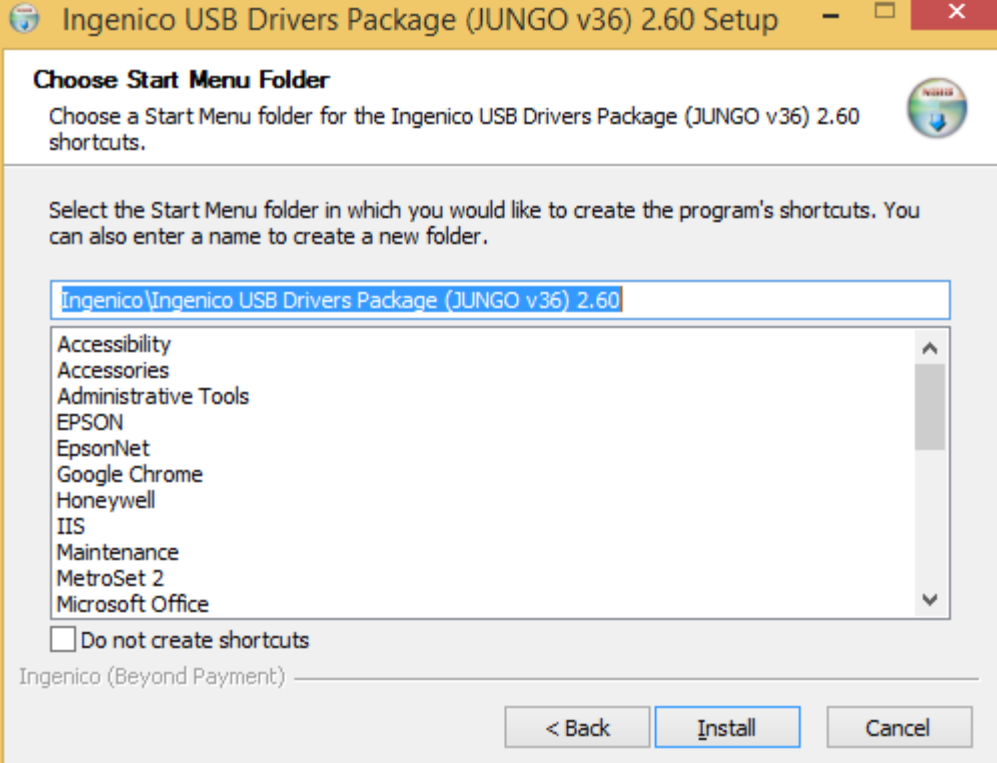
<input type="text" value="15"/>	<input type="text"/>	<input type="text"/>	<input type="text"/>	<input type="text"/>
---------------------------------	----------------------	----------------------	----------------------	----------------------

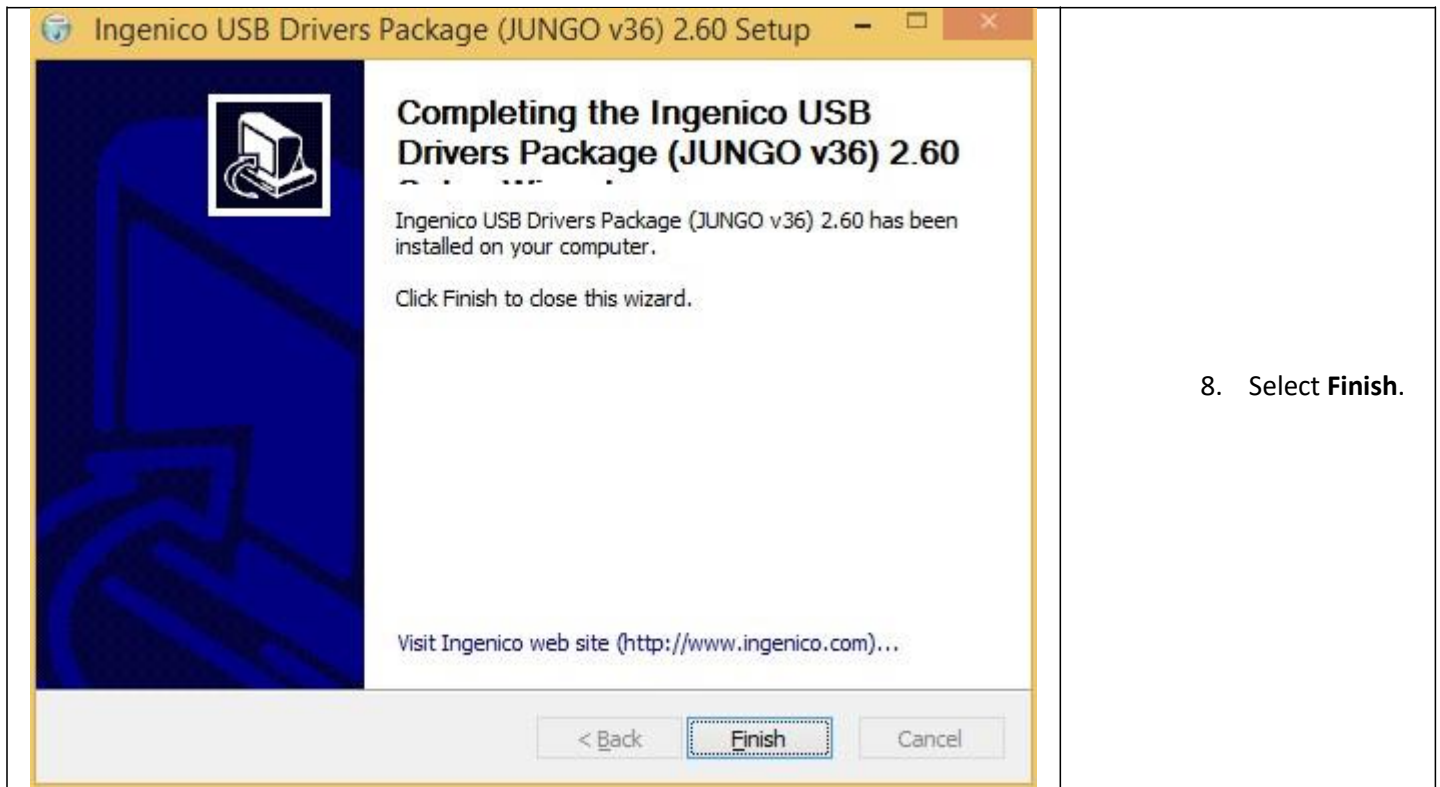
Ingenico (Beyond Payment)

< Back Next > Cancel

4. Select **Force COM Port Feature** to enable it.

5. In the first box under **Select by Connection Order**, enter the COM port the pinpad will be using (i.e. 15) , then select **Next**.

	<p>6. Place a check in Uninstall Microsoft Usbser drivers(s), Select Next.</p>
	<p>7. Select Install.</p>



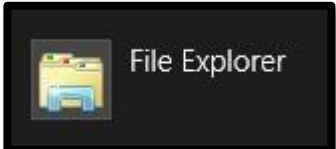
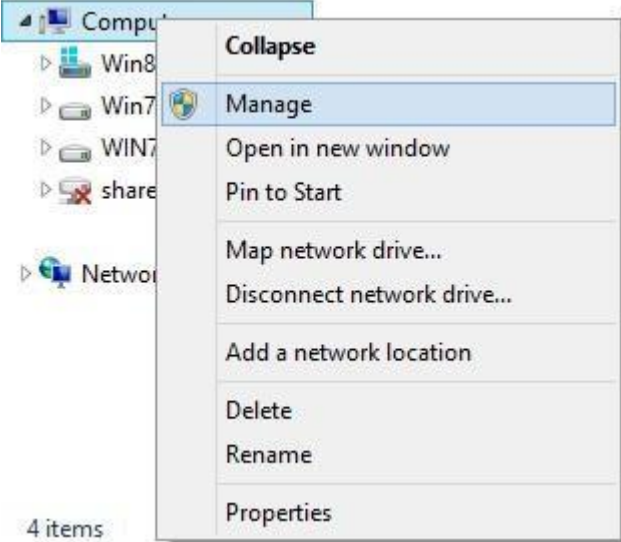
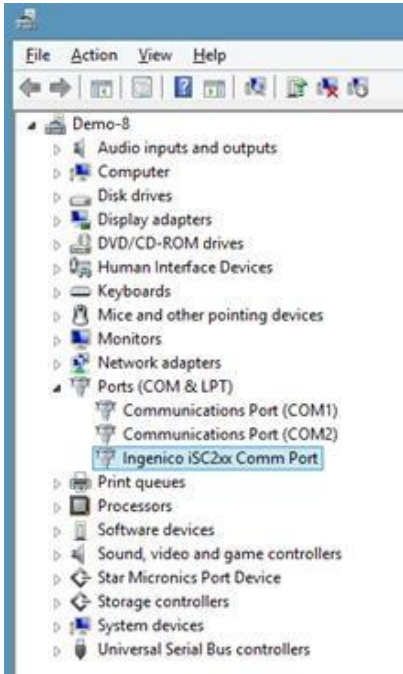
8. Select **Finish**.

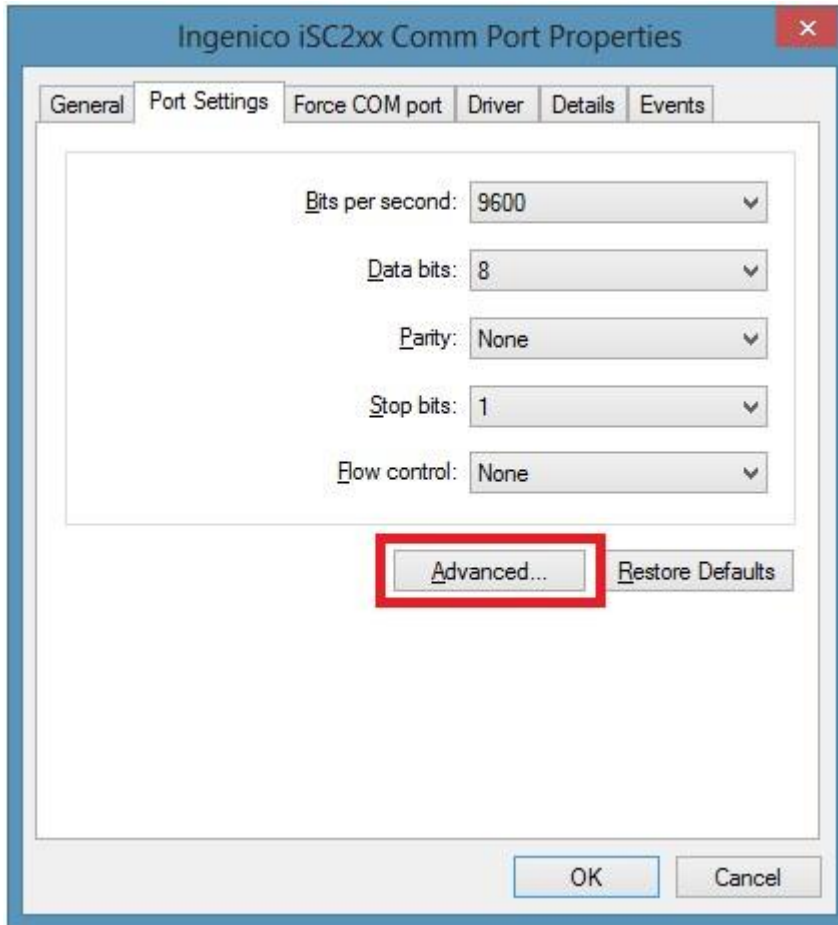
At this point of the installation please connect the pinpad to the computer running CAP POS

Determining which COM port is being used by the USB Cable

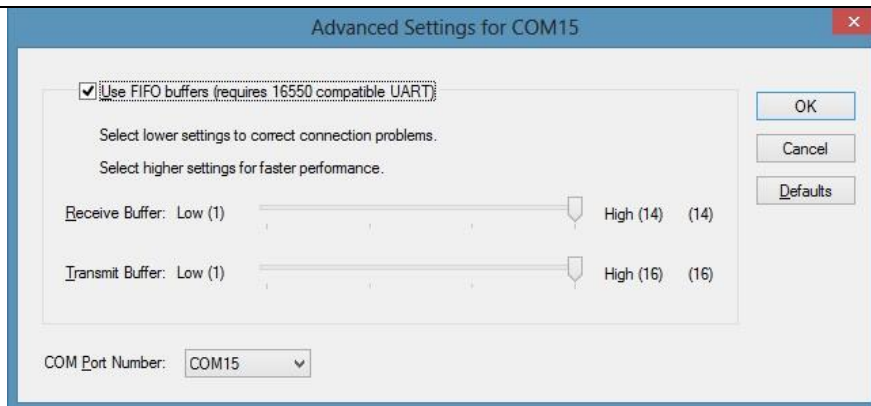
Even when the USB Serial cable is used, the computer thinks the iSC250 is connected to a COM

port. To find out which COM port the computer has assigned to the iSC250, follow these steps.

	<ol style="list-style-type: none">1. Open File Explorer from the task bar or open any folder on the desktop.
	<ol style="list-style-type: none">2. On the left panel, locate and right click Computer then select and left click Manage.
	<ol style="list-style-type: none">3. Click on Device Manager. If the pinpad appears without the COM port listed, Right-click and select Properties.



4. Select **Advanced...**



5. Make sure the COM port number selected matches the port that was entered during the driver installation (i.e. 15).

6. Click OK.

In Sellwise Open Configuration and Select Tender Types and Configure EDC. Setup your device and account information.

Mercury Setup

Set up EDC

Select EDC Method

(1) Mercury Payment Server

(2) NETePay Server

(3) Sage Exchange

(4) PC-EFTPOS

(5) Sterling Payment Server

(6) Pax

Details

MERCURYPAY Used For Credit Card Authorization	Yes
Merchant ID	337234003
Accept Debit Card	No
Require Credit Verify Number (CVV) when Card number is manually keyed in	No
Verify Address, Zip code (AVS) when Card number is manually keyed in	No
Terminal ID	
MPS Server Name	POS-1
SecureDevice	EMV_ISC250_MERCURY
Pad ID	ISC250
Tokens Enabled	Yes
Support Partial Approval	No
Use EMV	Yes
Allow Tips	No

Select EDC Device

EMV_Ingenico ISC 250 - Encrypted w/sig cap EMV enabled

Select COM Port

Com6

F1 Help

F10 Accept

Esc Cancel

Heartland Setup

Set up EDC

Select EDC Method

(1) Mercury Payment Server

(2) NETePay Server

(3) Sage Exchange

(4) PC-EFTPOS

(5) Sterling Payment Server

(6) Pax

Details

NETePay Used For Credit Card Authorization	Yes
Merchant ID	337234003
Accept Debit Card	Yes
Require Credit Verify Number (CVV) when Card number is manually keyed in	No
Verify Address, Zip code (AVS) when Card number is manually keyed in	No
Terminal ID	
NETePayMPS Server Name	POS-1
SecureDeviceID	EMV_ISC250_HEARTLAND
Pad ID	ISC250
Tokens Enabled	No
Support Partial Approval	No
Use EMV	Yes
Allow Tips	No

Select EDC Device

EMV_Ingenico ISC 250 - Heartland

Select COM Port

Com6

F1 Help

EMV Device Setup

F10 Accept

Esc Cancel

How do I reset Ingenico ISC 250 or 350 terminal?



To reset your **Ingenico ISC 250 touch or ISC 350 terminals**, **hold down the minus and yellow clear button at the same time**. Unplugging the terminal and replugging while connected to a power source is not recommended and doing so may corrupt the pin debit key, requiring a new key encryption injection.