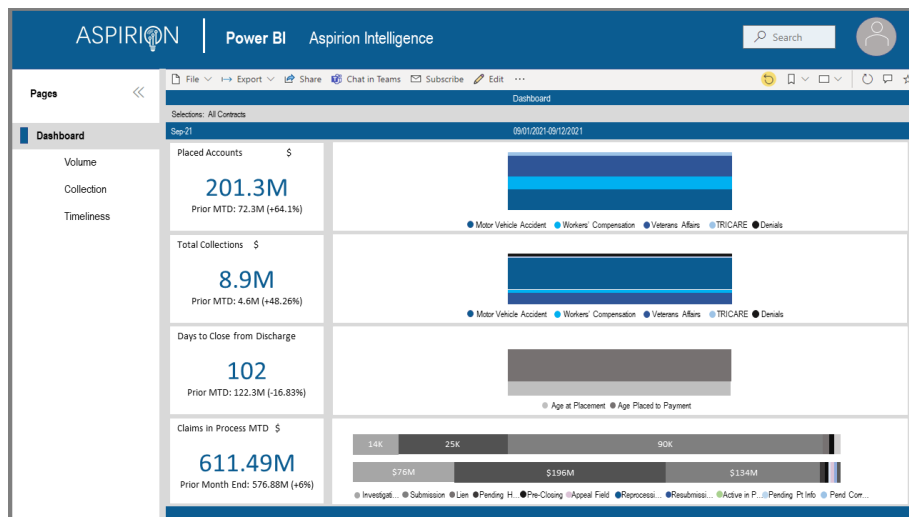


Aspirion Intelligence

A real-time window into revenue recovery performance

PERFORMANCE TRANSPARENCY AT YOUR FINGERTIPS

Aspirion Intelligence delivers a consolidated view of our performance. Using its simple and intuitive dashboards, you can easily monitor key activities to spot trends, patterns, and outliers to achieve your revenue recovery goals.



1

COLLECTION INTELLIGENCE

Identify trends, patterns, and outliers from the collection dashboard. View the total collections, average payment per claim, claim success and liquidity rates.

2

VOLUME INTELLIGENCE

The volume dashboard eliminates guesswork by providing the precise account volume placed including accounts in process as well as those that have closed.

3

TIMELINESS INTELLIGENCE

Discover time-to-collect, days to pay, age of placement, days since worked, and days-in-process averages from the timeliness dashboard.

Can your partner provide a real-time view into their performance?

Maybe what's not getting measured isn't getting done.

Engage with us

info@aspirion.com | www.aspirion.com

