

JUNE 23, 2021

Connect, Restart & Build Forward with B.C.'s Support Network

go2HR Support for Tourism & Hospitality Employers in BC

Ginger Brunner, CPHR
Regional HR Specialist

Credit: Destination BC/Kari Medig

British
Columbia
Tourism
Resiliency
Network


go2HR



WHO WE ARE



HEALTH &
SAFETY

HUMAN
RESOURCES

INDUSTRY
TRAINING

RESEARCH:
LMI &
STRATEGY



COVID-19 & BC TOURISM INDUSTRY

The COVID-19 pandemic continues to have significant negative impacts on the industry

Employer concerns as they ramp up for summer operations due to significant uncertainty around:

- extent of residual restrictions
- border closures and reopening
- availability of financial support
- labour supply



Credit: Destination BC/Local Wanderer

COVID-19 & BC TOURISM LABOUR CHALLENGES

Pre-COVID labour challenges continue, worsen:

- Increased priority on health and safety in the workplace
- Negative impact on perceptions of working in the industry
- Need for employee training and flexibility
- Workforce demographics continue to shift
- Foreign workers as key source of labour supply
- Mental health

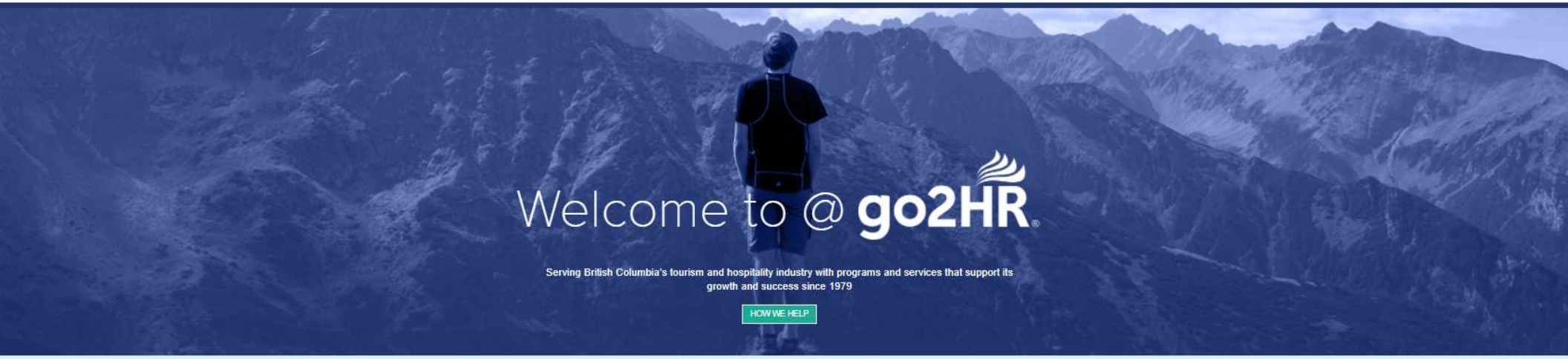


Credit: Destination BC/Kari Medig

go2HR SUPPORT FOR INDUSTRY

- HR Resources, Support & Consulting
- go2HR Job Board
- COVID-19 Safety Plan Reviews
- BSAFE Training
- BC Tourism & Hospitality LMI Research Project
- SAFE Spaces Sexual Harassment Initiative
- Mental Health Initiative





Welcome to @ go2HR

Serving British Columbia's tourism and hospitality industry with programs and services that support its growth and success since 1979

HOW WE HELP

We can help you with any HR, Health & Safety and Training related questions or concerns. Please contact us at info@go2hr.ca

BSAFE™ – BC Safety Assured For Everyone

What is BSAFE™? BSAFE is a new and FREE online health and safety training program designed to ensure foundational health and safety knowledge in BC's tourism and hospitality businesses to keep everyone safe as we move through the COVID-19 pandemic. Registration for Employers Registration for Workers BSAFE stands for BC Safety Assured For Everyone. Our tagline, "Your Trust, Our Priority", is...

[Read More](#)

Maintaining Your COVID-19 Safety Plan

BC's Restart! BC's Restart – a four-step plan to bring B.C. back together – was announced on May 25. There will be a slow and gradual return to a more normal...

[Read More](#)

COVID-19 Vaccinations In The Workplace

As BC enters the restart phase, vaccines form a big reason for the optimism surrounding expectations of a return to some semblance of normalcy. Increased supply and better logistics have...

[Read More](#)

COVID-19 Frequently Asked Questions

This page is being updated on an on-going basis, to provide information to help address common HR inquiries related to COVID-19 that we are receiving. Topics: BC Employer Training Grant...

[Read More](#)

go2HR JOB BOARD

- FREE for BC tourism & hospitality businesses
- [Register your business](#) and start [posting](#) jobs





go2HR COVID-19 SAFETY PLAN REVIEWS

- Employers in BC are required to have a COVID-19 Safety Plan in place
- BC Restart plan and easing of restrictions, PHO orders - changes will be coming for Safety Plans
- [Subscribe](#) go2HR employer newsletter and visit go2HR.ca for more information as it becomes available

NEW
COVID-19
SAFETY
CERTIFICATE



Safety Certified

Register TODAY!



EMPLOYEE TRAINING





BC TOURISM & HOSPITALITY LMI RESEARCH PROJECT

- Tourism and hospitality key drivers of BC economy
- Workforce shocked by COVID-19
- Labour Market Information (LMI) critical for forecasting and planning
- Tourism Task Force (TTF) recommended partnership and collaboration to gather industry data to support the workforce
- Important to understand the immediate and long-term workforce needs regionally and provincially



BC TOURISM & HOSPITALITY LMI RESEARCH PROJECT

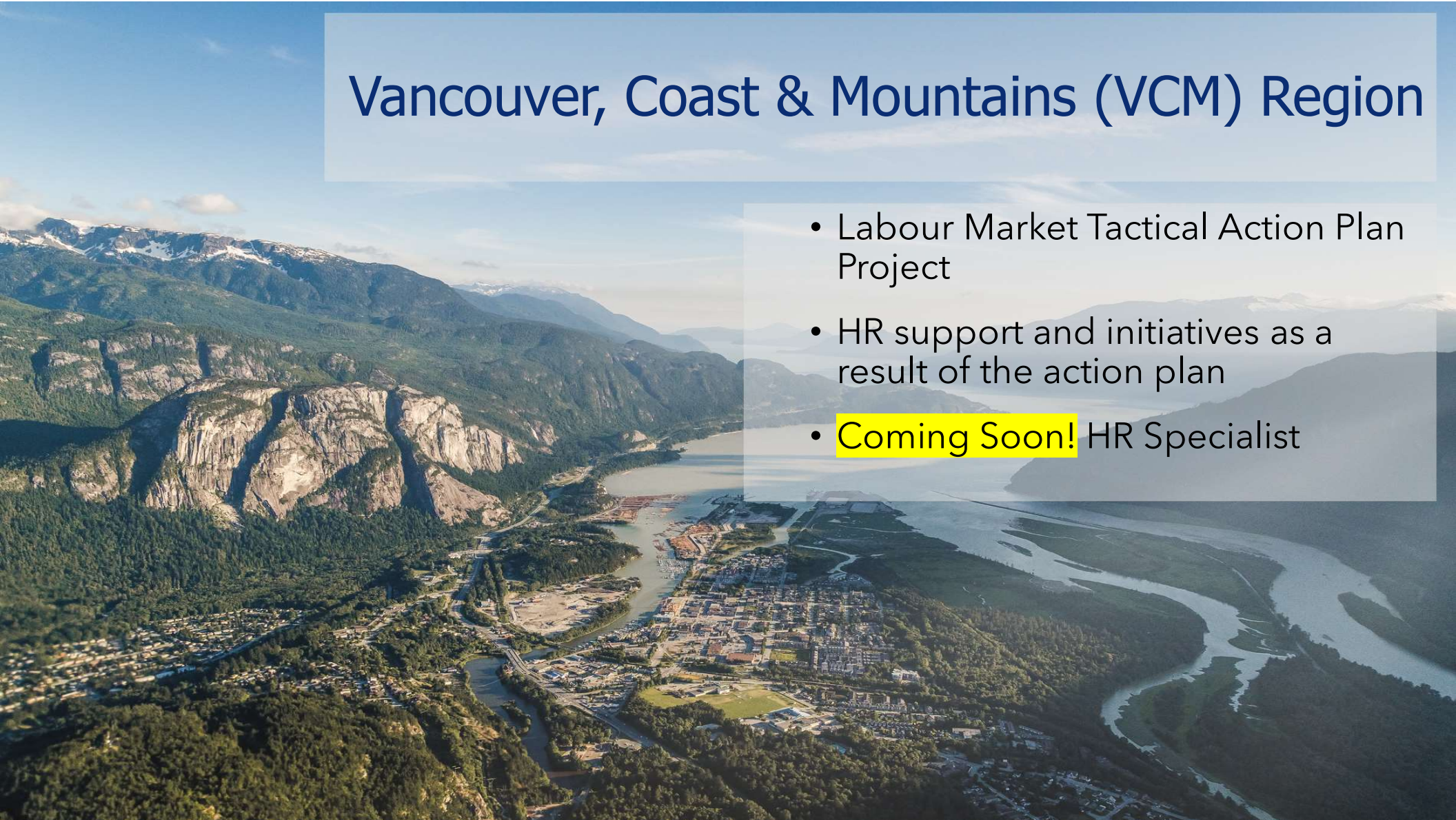
Project will help address gaps in LMI by:

- Engaging with industry to have common understanding in the definition of the industry workforce
- Developing BC and regional labour market forecasts aligned with COVID-19 economic recovery scenarios for the next 1-5 years (labour forecasts)
- Tracking, analysing and communicating monthly employment activity (Employment Tracker)
- Offering pre/post COVID insights to the labour supply (Workforce profile)

Coming Soon! EMPLOYMENT TRACKER to go2HR.ca

Vancouver, Coast & Mountains (VCM) Region

- Labour Market Tactical Action Plan Project
- HR support and initiatives as a result of the action plan
- **Coming Soon!** HR Specialist





SAFE SPACES – New go2HR & Justice Canada Partnership

Sexual Harassment Education and Training for BC's Tourism and Hospitality Industry

Goals:

- An increase in reporting of workplace sexual harassment incidents
- The long-term, reduced occurrence of incidents



Mental Health - New go2HR & CMHA Partnership

BC's Hub for Workplace Mental Health
Learn. Train. Inspire.

Urgent Help

Discover

Contact Us

Hospitality & Tourism

Welcome. Today, you are our guest. We want you to feel heard, seen, and cared for.

Below, you'll find a few rapid links to mental health and substance use services. You'll also find rapid links to resources and partners focused on longer-term pandemic recovery in the hospitality and tourism sectors.

If you're not sure where to begin, scroll further down, and pick one of the choices under Get Support, Access Training, or Join the Discussion to help us point you in the right direction.

[Tourism Resiliency Network Business Advice](#)

[Coaching Supports For Stress, Low Mood, And Worry](#)

[Virtual Mental Health Supports](#)

[Relief Funding For Hard Hit Businesses](#)



Discover More Resources

There are more resources to help you including **training** and an opportunity to **join the discussion** and be part of the movement to improve your workplace.

Mental health support, resources and training for BC tourism & Hospitality employers





THANK YOU

Ginger Brunner, CHRP
Senior HR Specialist

gbrunner@go2hr.ca
www.go2hr.ca
250-469-1032

[Subscribe](#) to our Employer newsletter

Credit: Destination BC/Hubert Kang

go2HR[®]