

***For Orders and Contracts Prior to March 1, 2013 only!
Please refer to the Carpenter Website for current values!***

**Latrobe Specialty Metals
Aerospace Alloys
Raw Material Surcharges (\$/lb) for February 2019**

Structural Alloys		Corrosion (Remelted)		Bearing Steels	
3311	\$0.47	15-5PH	\$0.85	440C	\$0.57
4130 , 4140, 4150	\$0.35	17-4PH	\$0.81	440C AM	\$0.57
4319, 4320, 4343	\$0.43	316L	\$1.35	440N-DUR	\$0.48
4340 VV	\$0.46	403 SS	\$0.48	52100	\$0.34
4340	\$0.43	422 SS	\$0.78	52100T2	\$0.33
4340L	\$0.47	Jethete	\$0.96	Aero-A6	\$0.49
4340L+	\$0.52	L410Cb	\$0.53	BG-42	\$2.09
4350, 4619, 4620	\$0.43	PH13-8Mo	\$1.10	CBS 223	\$1.02
6150	\$0.47	QS53	\$3.99	CBS 600	\$0.58
8620	\$0.36	XM-27	\$0.78	CBS50Nil	\$2.12
9310 VV	\$0.50			CSS-42L	\$5.41
9310, 9315	\$0.47			Dynaflex	\$0.90
16NCD13	\$0.49	Air Melt Stainless		L-6490	\$1.65
300M	\$0.50			Lesco 53	\$1.09
35NCD16	\$0.48	303	\$0.95	M-50	\$1.85
4330+V, 4335+V	\$0.51	304	\$0.91	QC61	\$6.26
A-286	\$0.00	304HN	\$0.87	QC64	\$5.88
AF1410	\$4.79	309	\$1.46		
D6AC	\$0.53	310	\$1.46	High Temperature	
GNB100	\$0.79	316	\$1.35		
HP-9-4-20	\$2.04	321	\$0.95	MP159 Bar	\$22.50
HP-9-4-30	\$1.91	347	\$1.37		
HTC	\$0.36	403	\$0.48	MP35N Bar	\$22.97
HY180	\$3.18	405	\$0.46	MP35N Billet	\$18.38
HYTUF	\$0.43	410	\$0.44	MP35N Coil	\$22.97
L-6305	\$0.56	416	\$0.53	MP35N Tubing	\$45.94
LSC100	\$4.81	418	\$0.53		
MarCast	\$4.47	420	\$0.45	Aerex	\$23.75
Marvac 250	\$4.05	422	\$0.78		
Marvac 300	\$4.53	431	\$0.67	LS-A286	\$0.00
Marvac 350	\$5.48	440	\$0.59	LSS-718	\$0.00
Nitalloy 135	\$0.34	17-4PH	\$0.81	LSS-625	\$0.00
Nitalloy N	\$0.49	TLS33SS	\$0.62	LSS-HX	\$0.00
QM54	\$3.43	TLS40SS	\$0.79	WELD6	\$0.00
UT-18	\$0.60	TLS50SS	\$1.50		
UT-19	\$0.52	TLS60SS	\$0.97		

Raw Material Surcharges have been historically calculated based upon a 3 month rolling average for each of the raw material components. However, due to the volatility of raw material costs, Latrobe Specialty Metals reserves the right to modify the surcharge calculation based upon current market conditions.

Refer to the Marketing Department for applicable surcharges for grades not listed.

***For Orders and Contracts Prior to March 1, 2013 only!
Please refer to the Carpenter Website for current values!***

**Latrobe Specialty Metals
High Speed, Cold Work & Hot Work Steels
Raw Material Surcharges (\$/lb) for February 2019**

High Speed Steel			Cold Work Die Steels			Hot Work Die Steels		
M1	Tatmo	\$2.37	A2	Select-B	\$0.63	A8+	MGR-MQ	\$1.01
M2	Double 6	\$3.64	A6	Lesco A6	\$0.45	H10	Dart	\$0.80
M2	Double 6-XI	\$3.64	A7	BR-3	\$3.29	H11	Dycast	\$0.81
M2	HS29	\$3.51	A7	Brickmold	\$3.34	H11+	Dycast-VAR	\$0.81
M2	HS29-XL	\$3.51	A8	MGR	\$1.01	H12	LPD	\$1.03
M3I	Corsair	\$3.78	A9	Mazeman	\$1.23	H13	VDC	\$1.14
M3II	Crusader	\$4.15	A10	Graph-Air	\$0.56	H13+	VDC-MQ	\$1.14
M4	Stark	\$4.44	A18	Whitebear	\$1.91	H13++	VDC-RF	\$1.08
M7	Tatmo-VN	\$2.97	D2	Olympic	\$1.05	H13-FM	Viscount	\$1.14
M11	Vancomo	\$2.72	D3	GSN	\$0.57	H14	Lumdie	\$1.32
M33	Kelvan	\$4.54	D4	GSN+Mo	\$0.83	H19	Lesco19	\$3.70
M35	HS 105	\$4.64	D5	Riptide	\$1.19	H21	CLW	\$2.70
M42	Dynamax	\$4.45	D7	BR-4	\$3.05	H26	H26 Mod	\$5.28
M50	CM-50	\$1.50	L6	Montana	\$1.35	H43	Lesco 43	\$2.68
M51	M51	\$7.25	O1	Badger	\$0.42	P20	Bruno	\$0.37
M52	CM52	\$2.95	O6	Graph-Mo	\$0.33	P21	Cascade	\$0.59
T15	Dynavan	\$7.35	O7	Lesco O7	\$0.65	S7+	S7-MQ	\$0.51
	Abscido	\$2.75	S1	XL-Chisel	\$0.94	420SS	Saxman6R	\$0.63
	Supersaw	\$3.62	S2	Trident	\$0.51	420-FM	Saxman-FM	\$0.63
			S4	Damascus	\$0.29		CAT H10	\$0.88
			S5	Lanark	\$0.63		Chromo-N	\$1.08
			S7	Bearcat	\$0.51		HC-H13	\$1.24
			4140H	Brake Die	\$0.33		HW-108	\$1.83
				Chipper	\$0.82		LSC2367	\$1.10
				Koncor	\$2.92		Magnadie	\$0.76
				Lescowear	\$2.33		Mandrel	\$0.45
				Staminal	\$0.54		PS-55	\$0.46
				Typlex	\$0.69			
				Vertex	\$0.91			

Raw Material Surcharges have been historically calculated based upon a 3 month rolling average for each of the raw material components. However, due to the volatility of raw material costs, Latrobe Specialty Metals reserves the right to modify the surcharge calculation based upon current market conditions.

Refer to the Marketing Department for applicable surcharges for grades not listed.

***For Orders and Contracts Prior to March 1, 2013 only!
Please refer to the Carpenter Website for current values!***

**Latrobe Specialty Metals
Conversion Sales
Raw Material Surcharges (\$/lb) for February 2019**

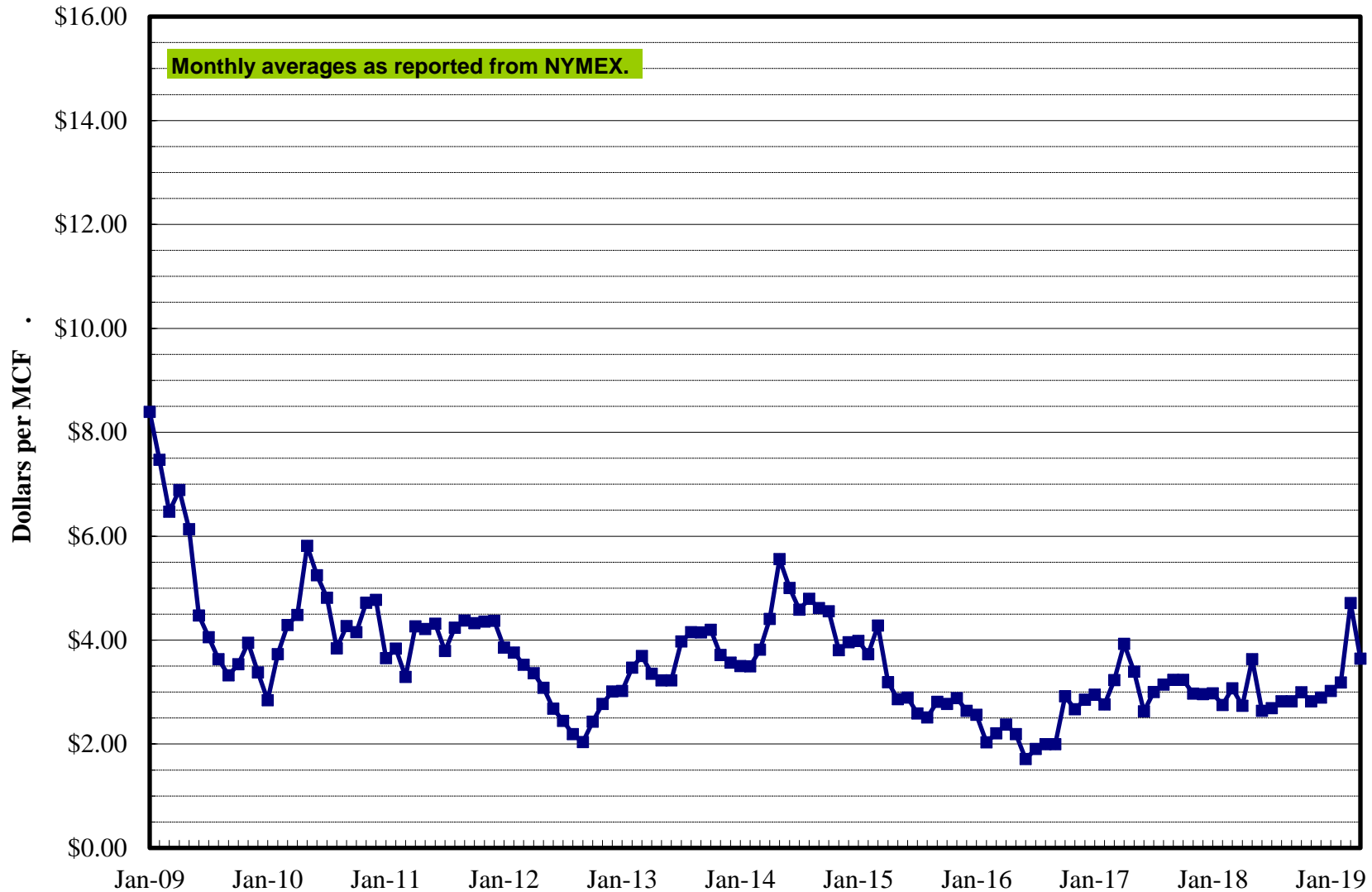
Conversion

Non-Ti Air Cool	\$0.02
Non-Ti Fce Cool	\$0.03
General Ti	\$0.02
Special Processing	\$0.03
Machining Only	\$0.00
Remelt Only	\$0.00

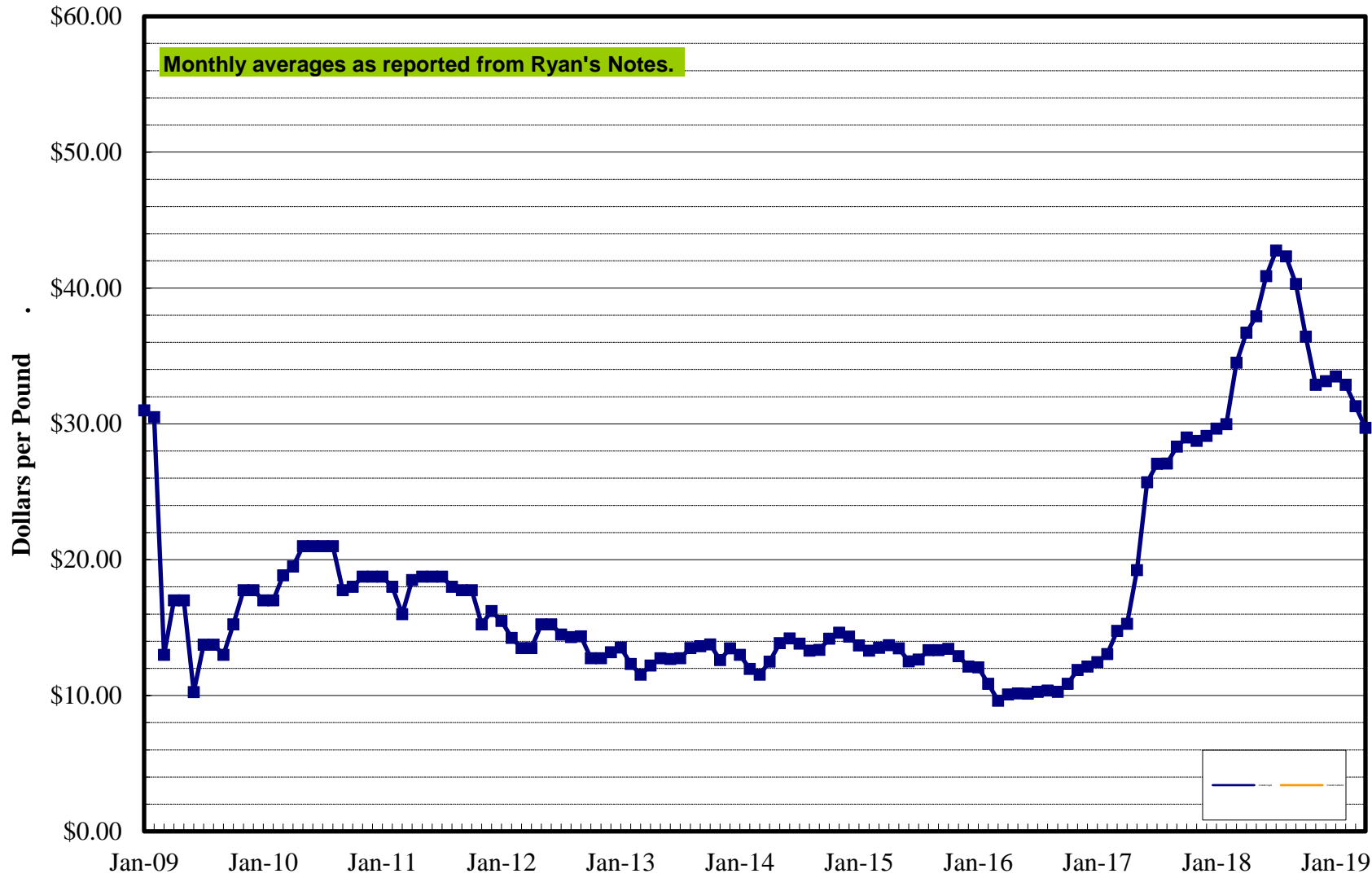
Raw Material Surcharges have been historically calculated based upon a 3 month rolling average for each of the raw material components. *However, due to the volatility of raw material costs, Latrobe Specialty Metals reserves the right to modify the surcharge calculation based upon current market conditions.*

Refer to the Marketing Department for applicable surcharges for grades not listed.

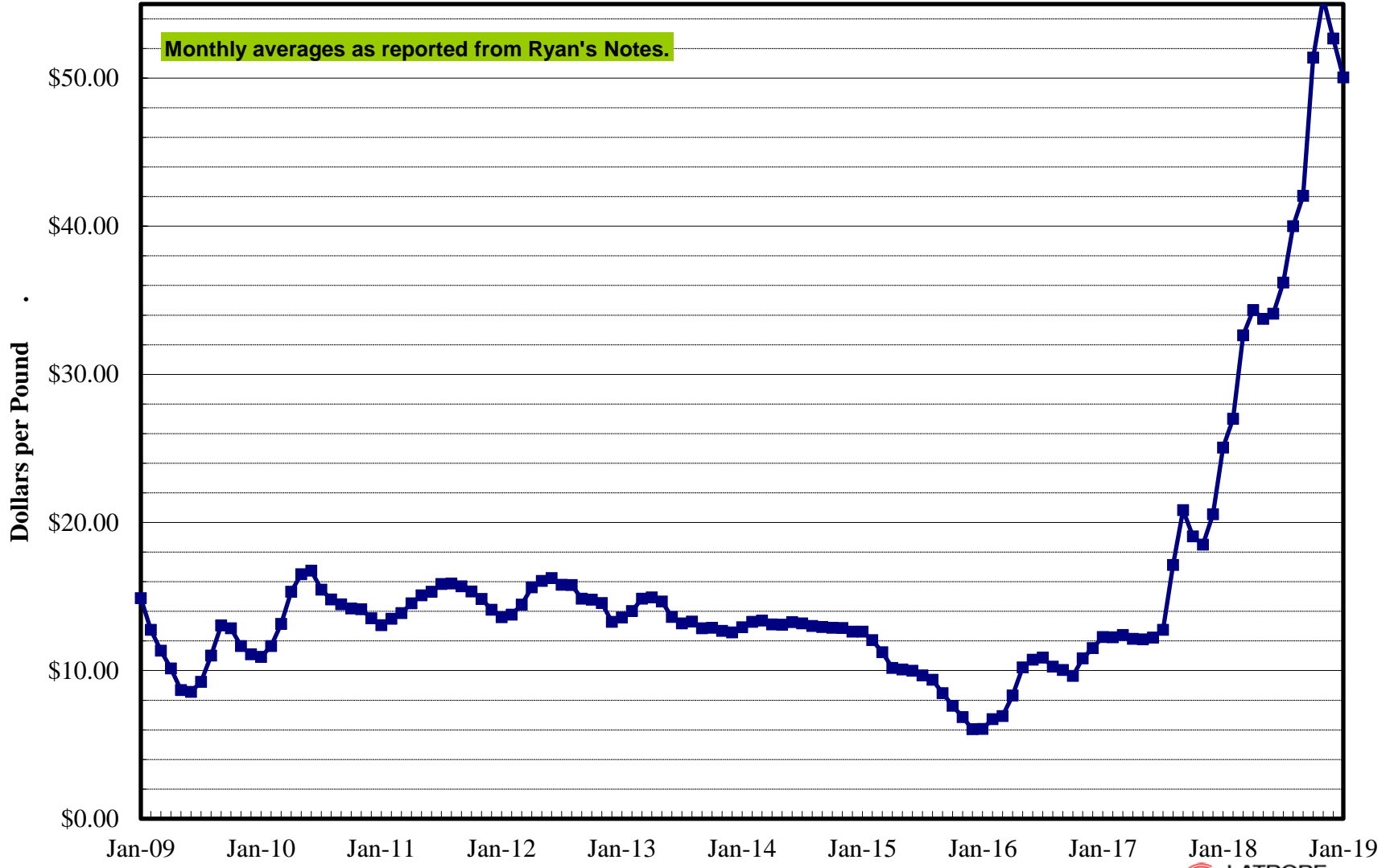
Natural Gas Prices



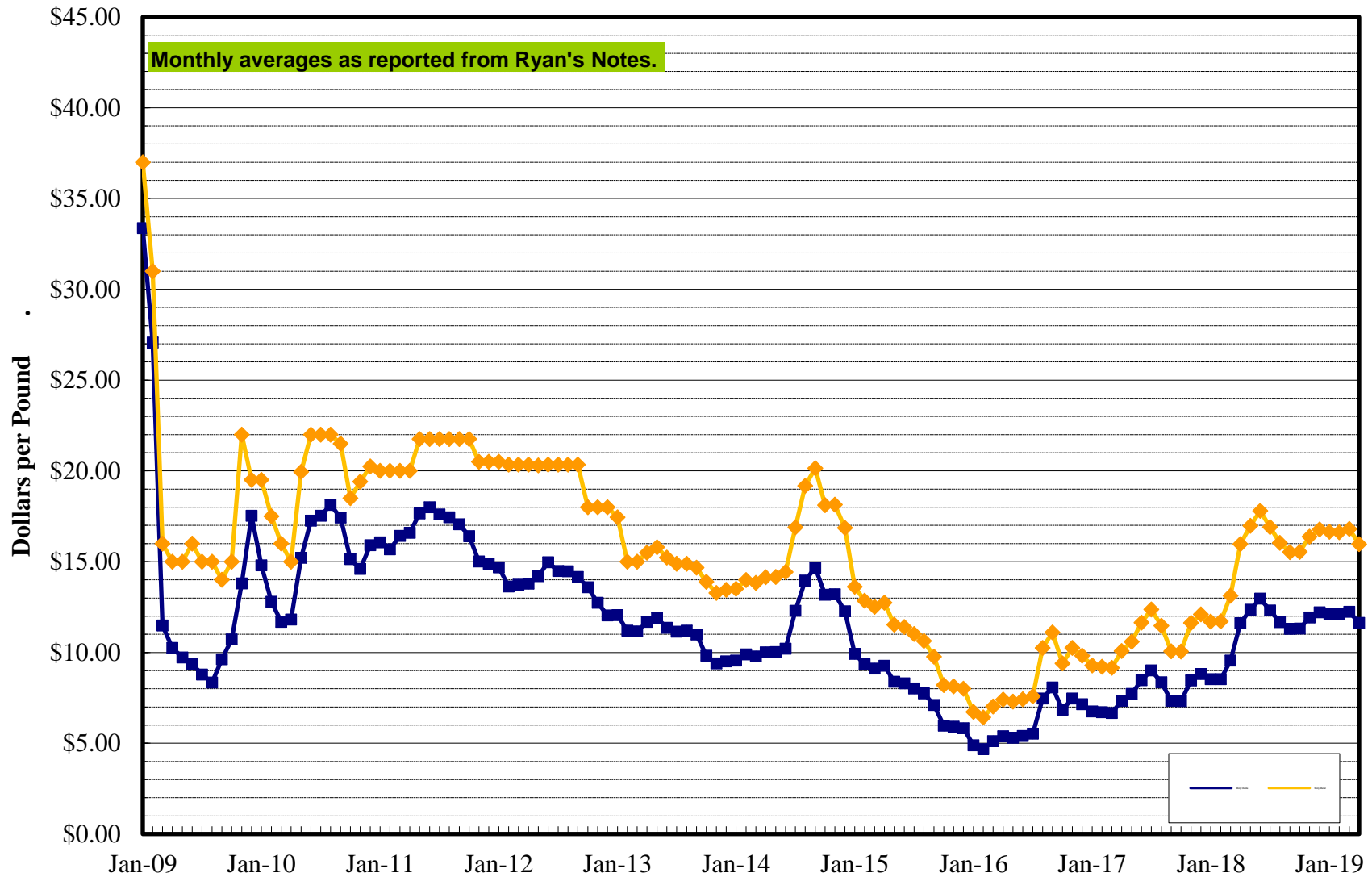
Cobalt Prices



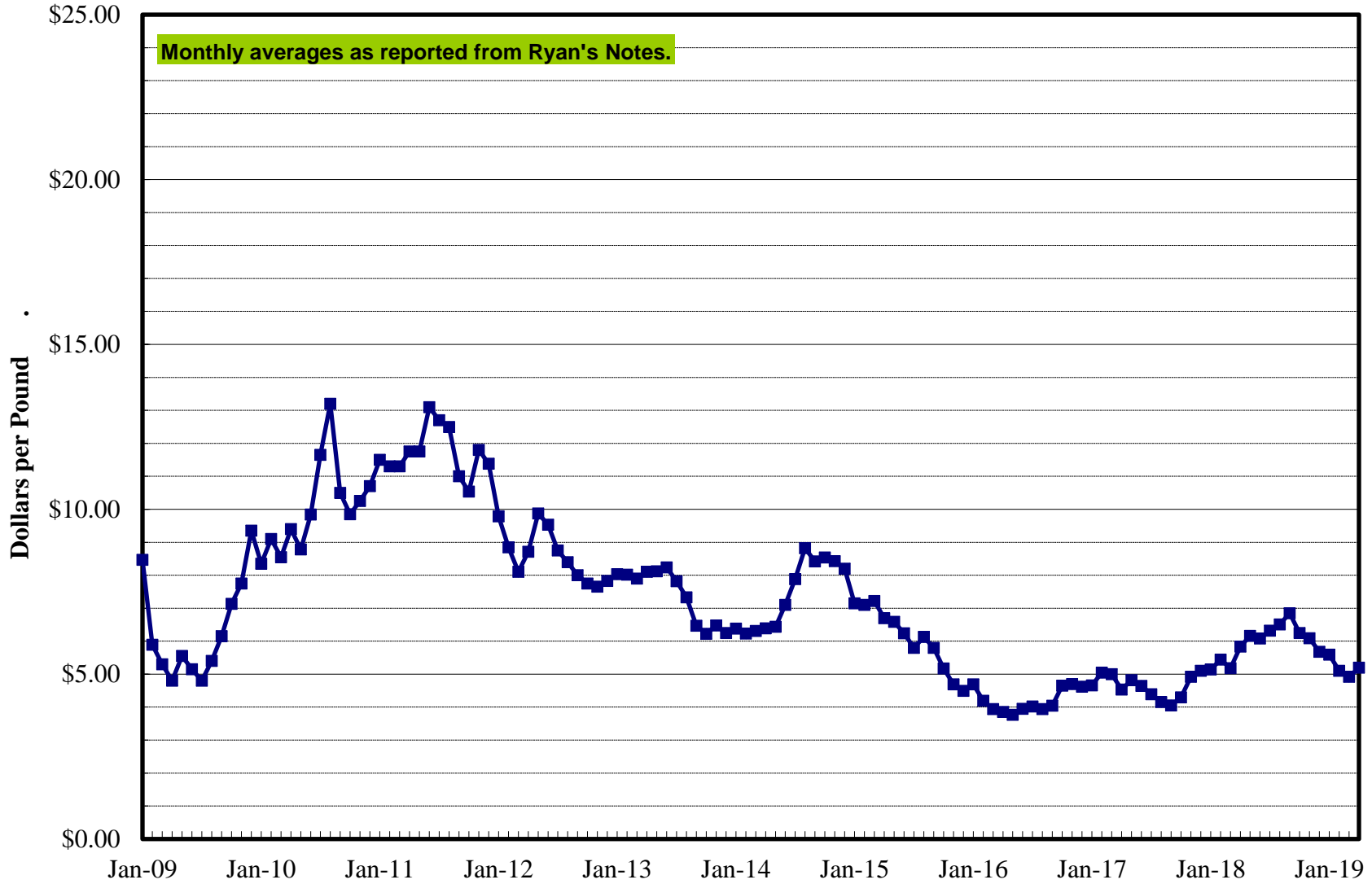
Ferro Vanadium Prices



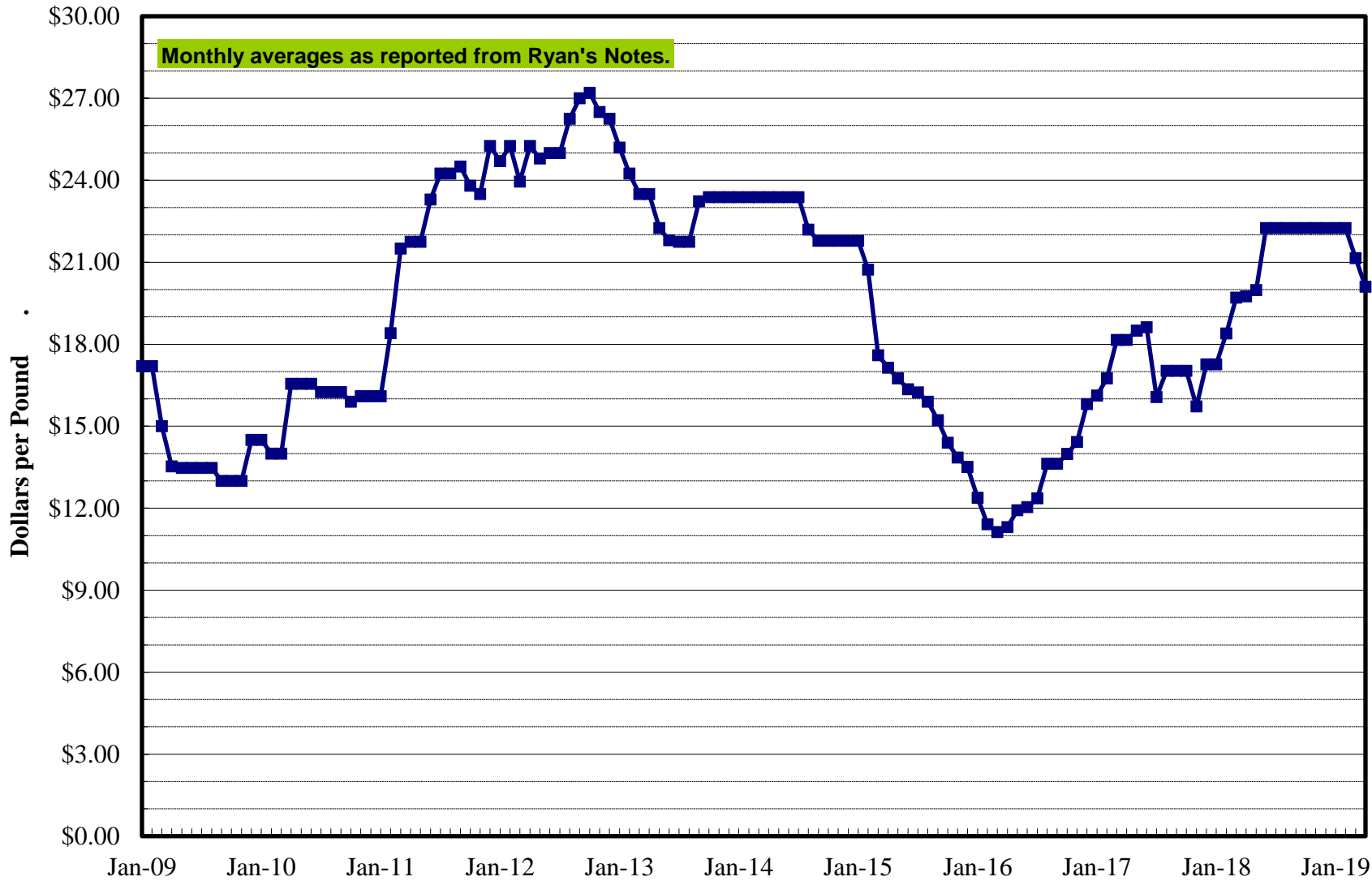
Molybdenum Prices



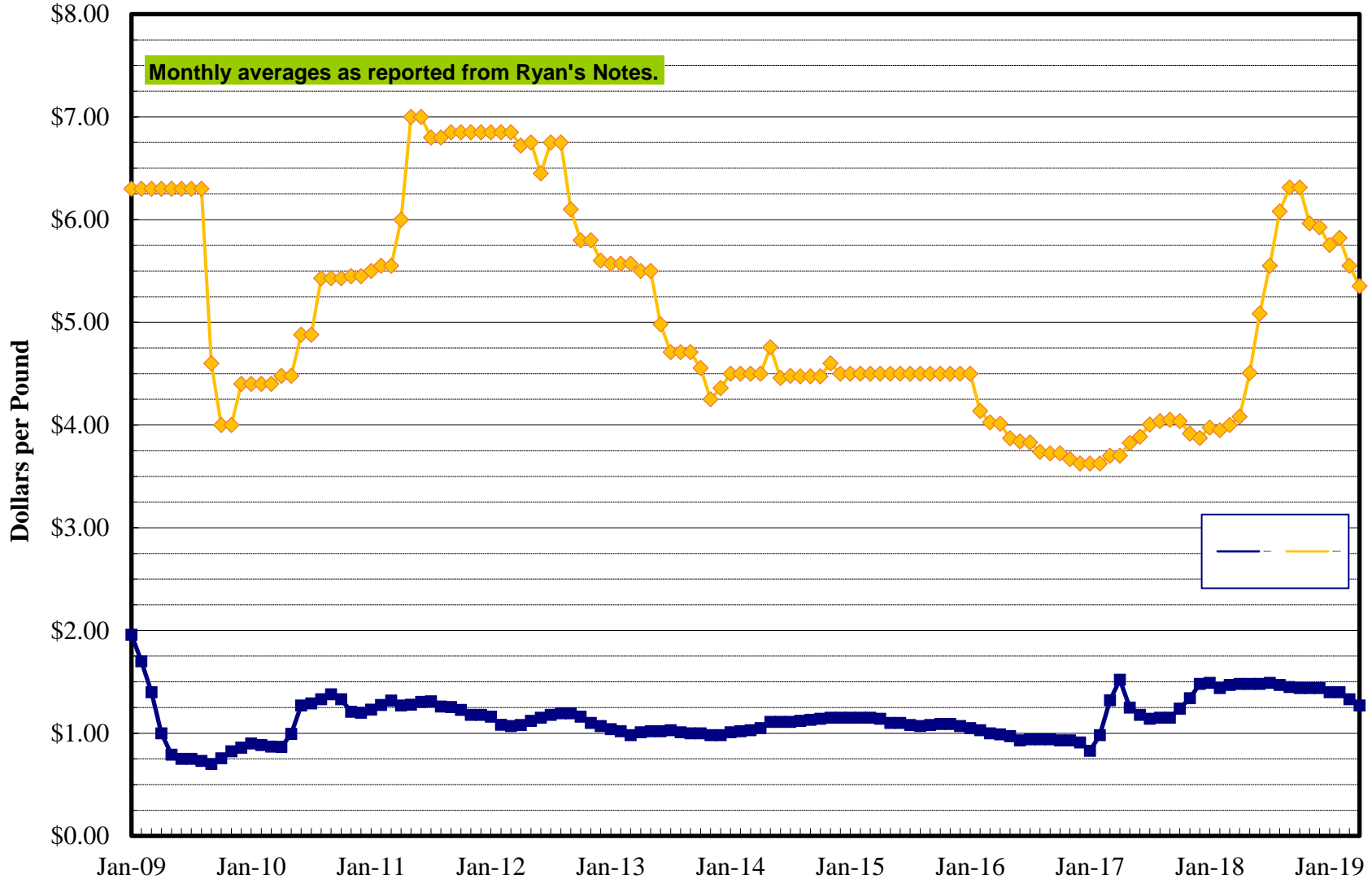
Dealer Nickel Prices



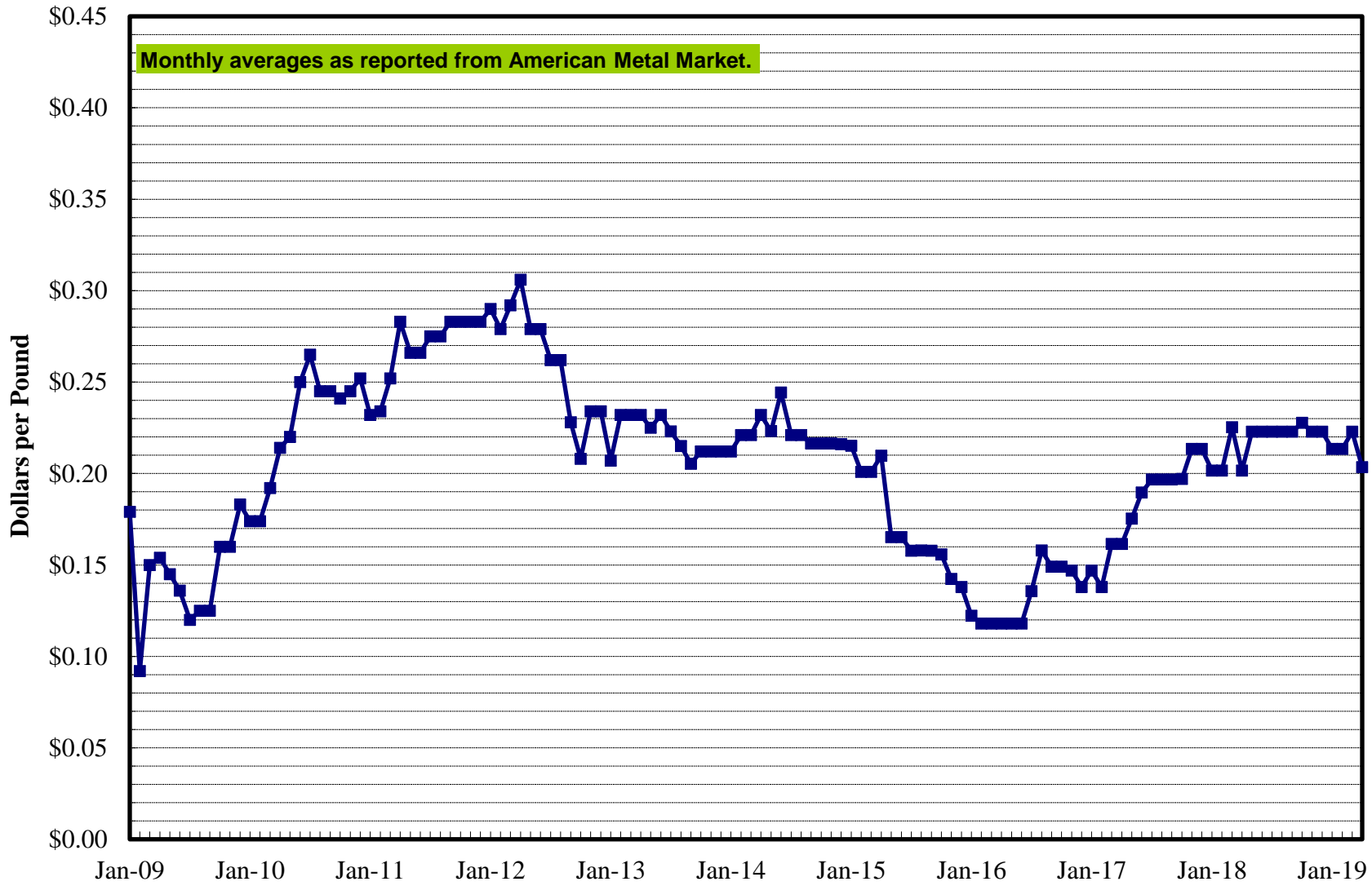
Chinese FerroTungsten Prices



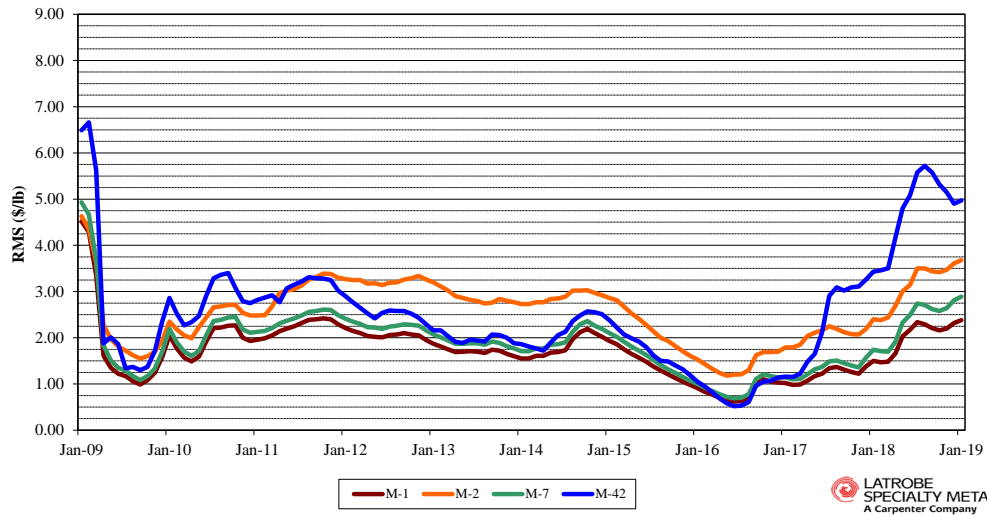
Chromium Prices



Iron Busheling Prices

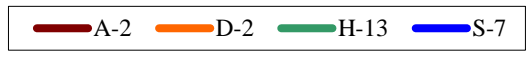
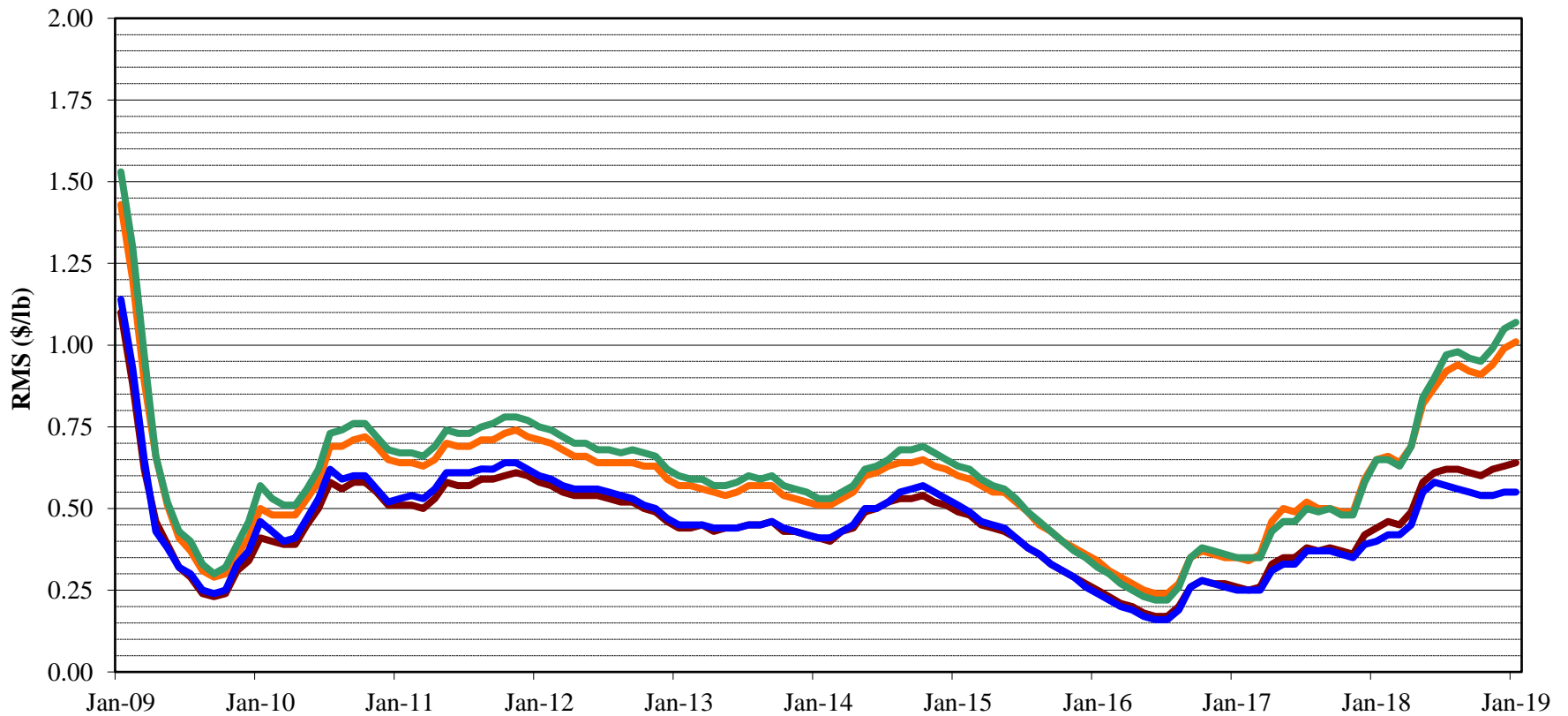


High Speed Steel Surcharges



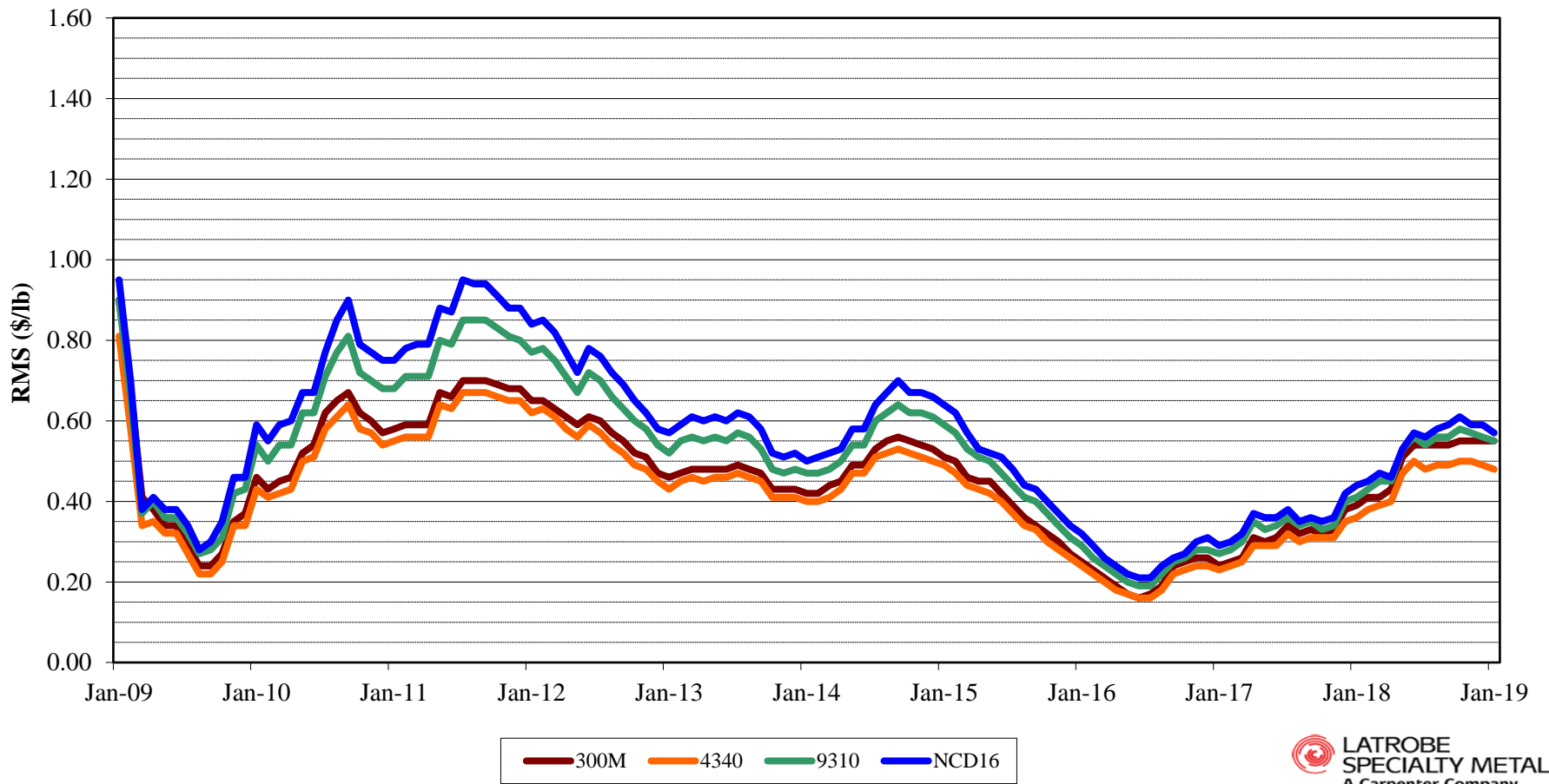
LATROBE
SPECIALTY METALS
A Carpenter Company

Die Steel Surcharges



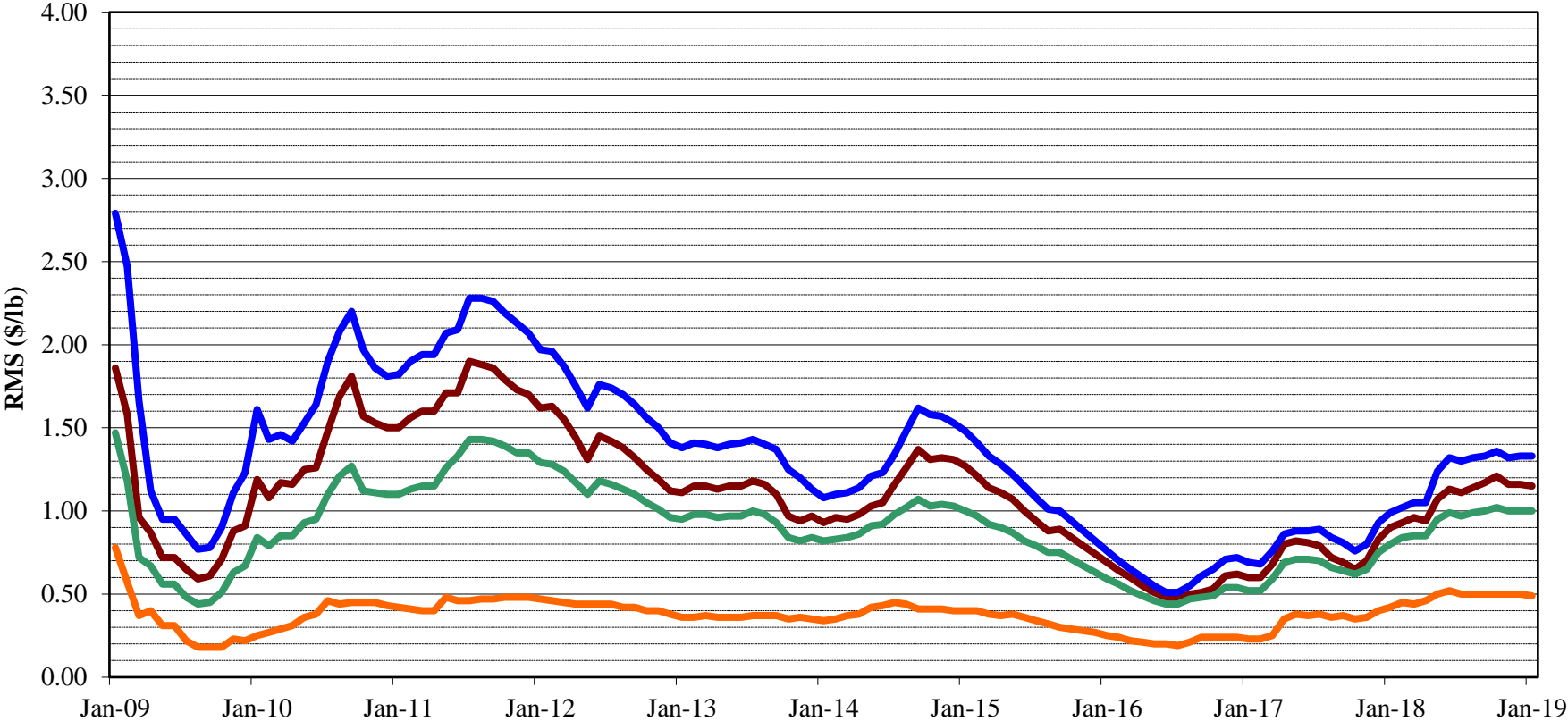
2/5/2019

Structural Alloy Surcharges



2/5/2019

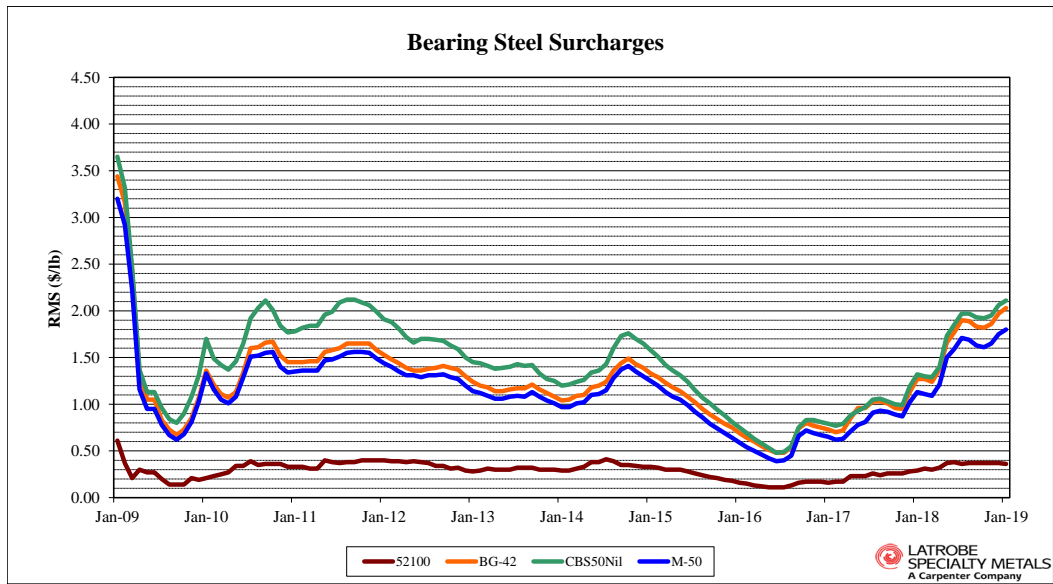
Corrosion Resistant Alloy Surcharges



304 410 15-5 13-8



2/5/2019



High Temperature Alloy Surcharges

