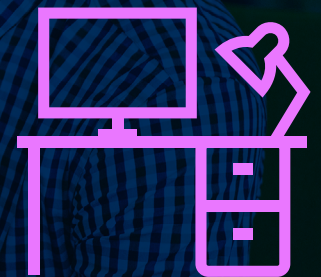


*workplace hub*

# Manage Microsoft 365

boxxe

making  
technology  
*human*





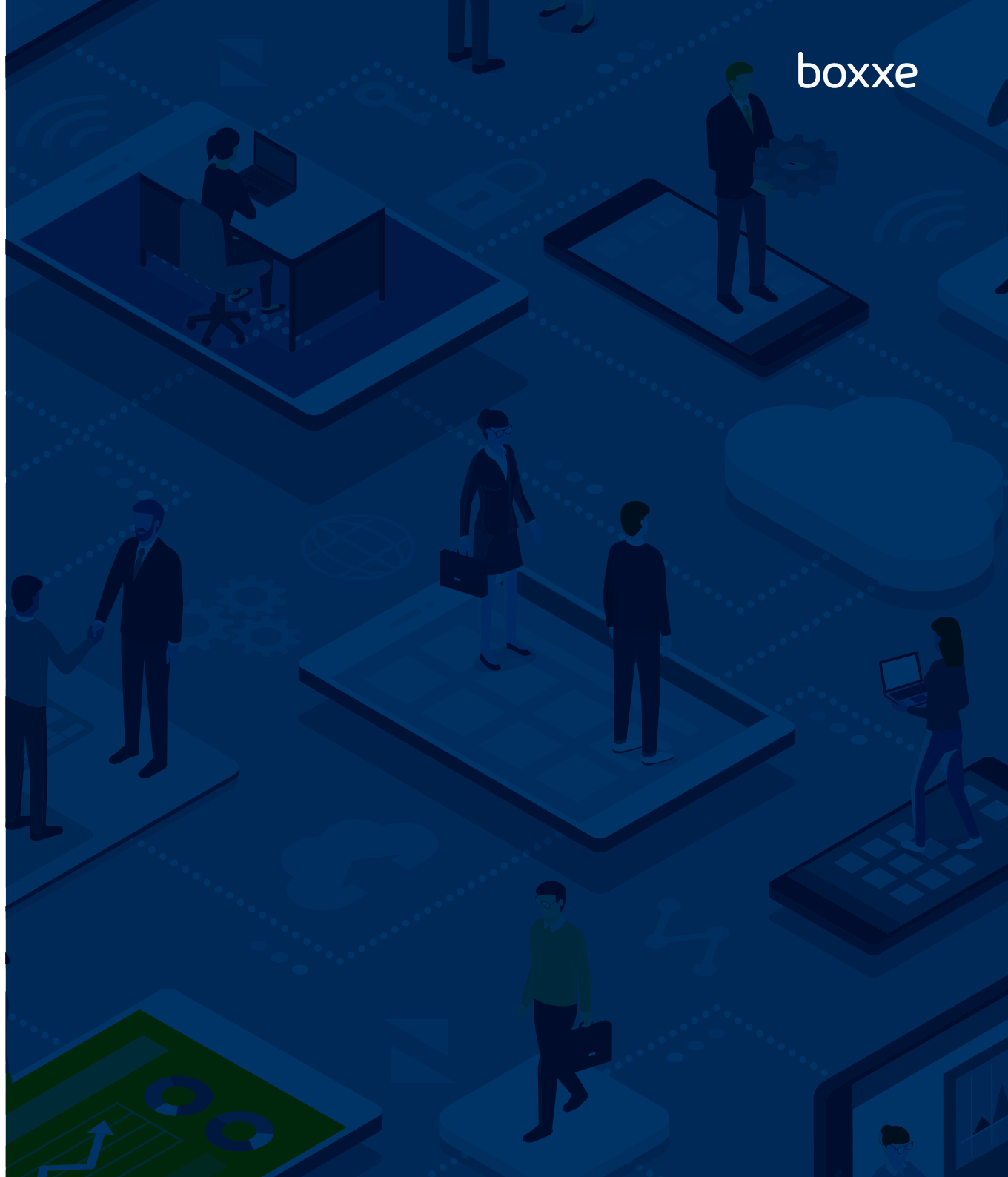
# making technology *human*

**boxxe** makes the global workplace habitable from a technological and human perspective. One does not overrule the other. They function efficiently and effectively together.

We believe in reciprocal adaptation: adapting technology to people and people to technology.

We aim to make organisations the best they can be through technology and by giving every person, wherever they are in the world, the confidence to use that technology to drive efficiency and effectiveness in every aspect of their working lives.

***How can we help to make you the best you can be?***

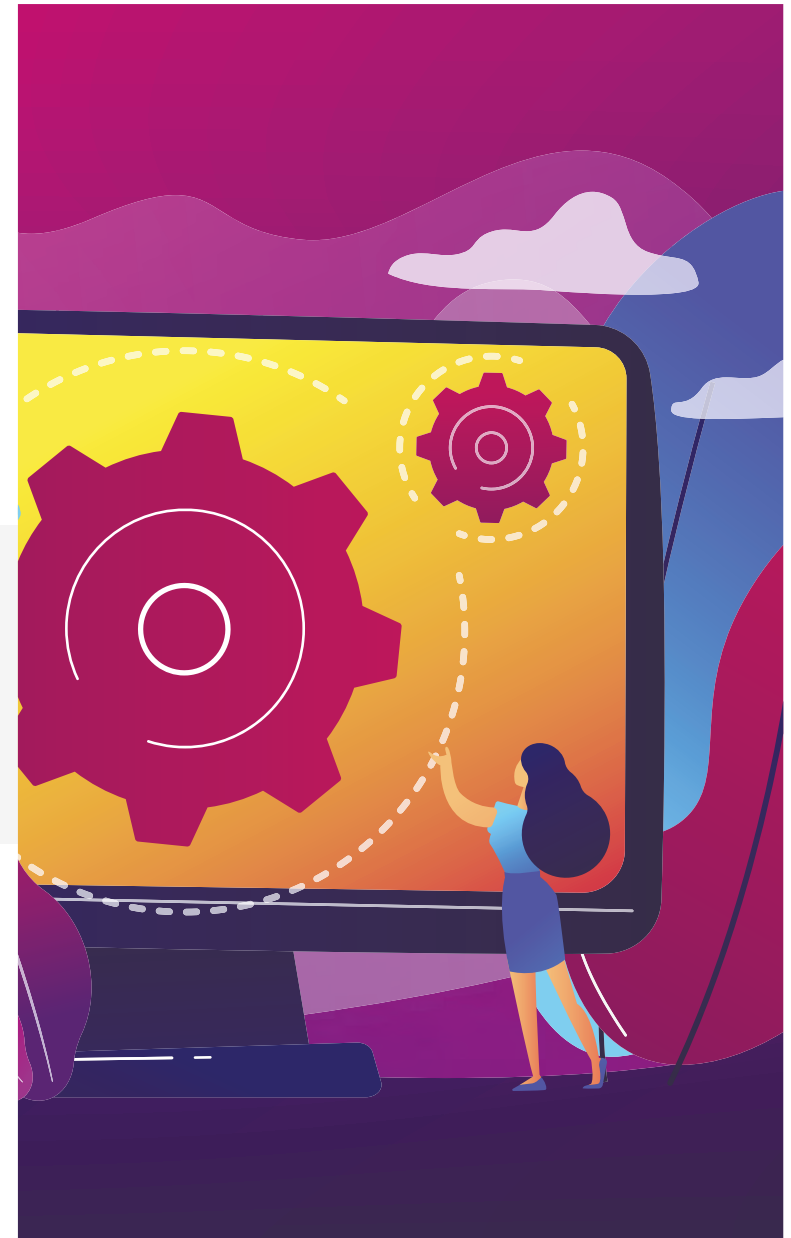




# ***Focus on success*** with specialist driven Microsoft technologies

Your investment in Microsoft Cloud is critical to the success of your organisation, but managing, supporting and upgrading Microsoft technologies is a constantly evolving task. Keeping on top Microsoft 365 operations in house can be time consuming and will inevitably pull the focus of your ICT staff from key priorities. Share the load with our security cleared engineers and enable Microsoft 365 to accelerate your success.

Evolve your Microsoft 365 operations with ***boxxe's manage 365 service***





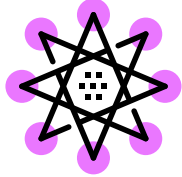
platform

workplace

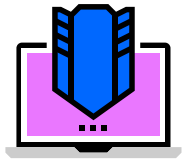
security

data

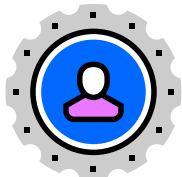
digital



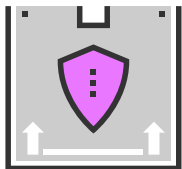
**ROBUST** service using ITIL framework to deliver the best possible IT management experience



**SECURE** service that ensures confidentiality in handling of your data with security cleared experts



**UNLIMITED** support with no cap on support hours ensuring your incident is resolved as fast as possible



**SAFETY NET** service that utilises boxxe's 30+ years ICT knowledge to assist you no matter what the query

## Keep Microsoft 365 Running with Security Cleared Expertise, Support and Management

Get access to boxxe's security cleared engineers for subscription support, technical support and management on the suite of Microsoft 365 technologies. The service adheres to strict service level agreements to support you on the following technologies:

- **Microsoft 365**
- **Microsoft Office 365**
- **Azure Active Directory**
- **SharePoint Online**
- **Microsoft Intune**
- **Microsoft Enterprise Mobility + Security**



# | Manage Microsoft 365

	ESSENTIAL	ENHANCED	COMPLETE
24 x 7 Service Desk Portal	✓	✓	✓
Business Hours Service Desk	✓	✓	✓
Incident Support and Microsoft escalation	✓	✓	✓
Subscription and Technology advice	✓	✓	✓
Subscription Support (Billing, reporting & Licensing)	✓	✓	✓
<b>Technical Support</b>		✓	✓
<b>End User Support</b>			✓
<b>Monthly Service Report</b>			✓
<b>Quarterly M365 Health Check and Service Review</b>			✓
<b>Included with Microsoft 365 purchase</b>	+		

+ Included when Microsoft 365 licenses are purchased through Cloud Service Provider from boxxe.

3 levels of service, support, and insight to match your unique business requirements

## ● **Essential**

Takes care of base subscription administration, with boxxe. Included with all Microsoft 365 subscriptions purchased under an boxxe CSP license agreement.



## **Enhanced**

Builds on Essential to provide technical support to the organisation's ICT staff on all of the technologies. No matter what the query, use boxxe as a safety net to supplement ICT staff knowledge.



## **Complete**

Relieve further burden on IT staff with full 365 support to your end users. Take all the features of Essential and Enhanced, and in addition, monthly reporting providing insight into areas from improvement and efficiency gains.





platform

workplace

security

data

digital

# *unleash extraordinary change*

boxxe exists to **enable** organisations to be the best they can be through the use of **technology**.

We give every person, wherever they are in the world, the **confidence** to use that technology, to drive efficiency and effectiveness in every aspect of their working lives.

Our digital transformation services deploy technology that makes businesses more agile, more efficient and more profitable

## Discover more about services that can help you thrive



Microsoft 365 Health Check



Backup Microsoft 365



Consultancy



# | *boxxe service hubs*

Powered to help you transform anywhere across your organisation



**platform**

*Optimise* your environment



**workplace**

*Drive* end-user productivity



**security**

*Secure* your world



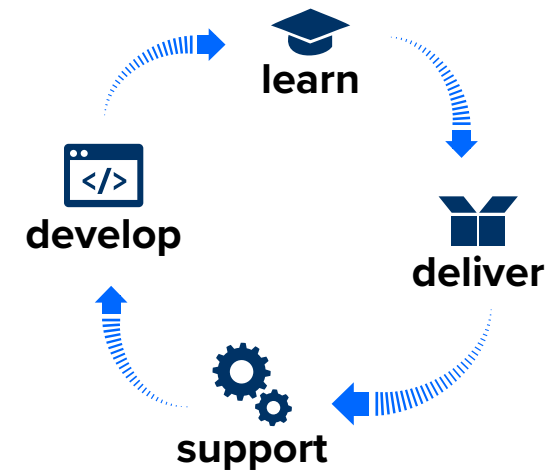
**data**

*Gain* actionable insights



**digital**

*Drive* innovative transformation



Modern engagement doesn't have a start and finish. True transformation requires a continuous conversation. That's why we created a circular approach to guide you through our hubs as you change and transform.

***empower your community  
with boxxe***



# chat to us

Want to know more? get in touch  
***speak to our boxxers today.***

Find out more about our technology services at

 [boxxe.com](https://boxxe.com)

**boxxe** | making  
technology  
***human***