

2019 LACDMH Provider Directory

Locations of Publicly Funded Mental Health Services
in Los Angeles County

Provider Directory - 2019

Locations of Publicly Funded Mental Health Services in the County of Los Angeles

The 2019 Provider Directory of Publicly Funded Mental Health Providers is a service location guide for mental health services. The Directory lists services available at Psychiatric Inpatient and Outpatient Short Doyle/Medi-Cal Facilities, Community Outreach, and Residential Facilities. The Provider Directory does not list service locations of Outpatient Fee-For-Service network providers.

The Provider Directory lists Provider Name, Address, Phone Number, Hours of Operation, Types of Specialty Mental Health Services (SMHS), Age Groups Served, Languages/Cultures, Provider Numbers, and Non-Governmental Agency (NGA) Designation. Providers are listed alphabetically within each Organizational classification such as 24 Hour/Residential, Community Outreach, Crisis Services, Day Services, Juvenile Justice, and Outpatient. The Provider Directory is a resource to search for service providers in areas nearest to clients and providers. Providers are listed alphabetically by name and the primary mode of service.

The Providers listed in the Provider Directory can also be located on the internet using the Online DMH Provider Locator at: <http://maps.lacounty.gov/dmhSL/>. To use the Online DMH provider Locator, type the complete address of your location in the website address window and click on "Search." The Online DMH Provider Locator will show the nearest locations on the map on the left side of the screen. Also shown will be the distance from your "Search" location and driving directions. Information on the Online Provider Locator can be translated into 90 or more languages.

In 2013, the LACDMH Service Area Provider Directories were revised to include the category of **cultures**. The new category now reads as **languages/cultures**. This additional highlights information on culturally and linguistically competent mental health services offered at service locations within our system of care. The listing of services under the category of **languages/cultures** aims to facilitate the ease with which consumers, family members, community members, and other stakeholders can locate mental health services that accommodate their individual preferences and needs. The Directories are also a resource to staff when seeking providers with cultural and linguistic competencies. Additional information on the definition and elements of culture and the National Culturally and Linguistically Appropriate Services (CLAS) Standards can be found at the US Department of Health and Human Services webpage on CLAS at: <https://www.thinkculturalhealth.hhs.gov/pdfs/EnhancedCLASStandardsBlueprint.pdf>

Age-Group Served by Providers: The age-groups served by providers are: Child, TAY (Transitional Age Youth), Adult, and Older Adult. Providers serving Children serve consumers between the ages of 0 and 17. Providers serving TAY serve consumers between the ages of 16 and 25. Providers serving Adults serve consumers between the ages of 18 and 59. Providers serving Older Adults serve consumers 60 years of older.

Contact Us: Every effort is made to ensure the information in the Service Area Provider Directory is accurate and current. However, information changes frequently and the Program Support Bureau, Quality Improvement Division, Data-GIS Unit will make the best effort to ensure the

For first time visit and/or new referrals, please contact provider. To obtain Mental Health Information and Services confidentially, please call the 24/7 ACCESS Center Hotline at 1-800-854-7771. (For TDD-TTY, call 1-866-735-2922.) To schedule interpreter services for the hearing impaired (American Sign Language-ASL), please call the 24/7 ACCESS Center Hotline. *MHS refers to individual/group therapy and collateral services. Provider: DMH = Directly-Operated Facility; NGA = Non-Governmental Agency (Contractor); FFS = Fee-for-Service.

Provider Directory - 2019
Locations of Publicly Funded Mental Health Services in the County of Los Angeles

information is accurate and current. **Corrections or questions pertaining to the provider information contained in this directory can also be emailed to:**

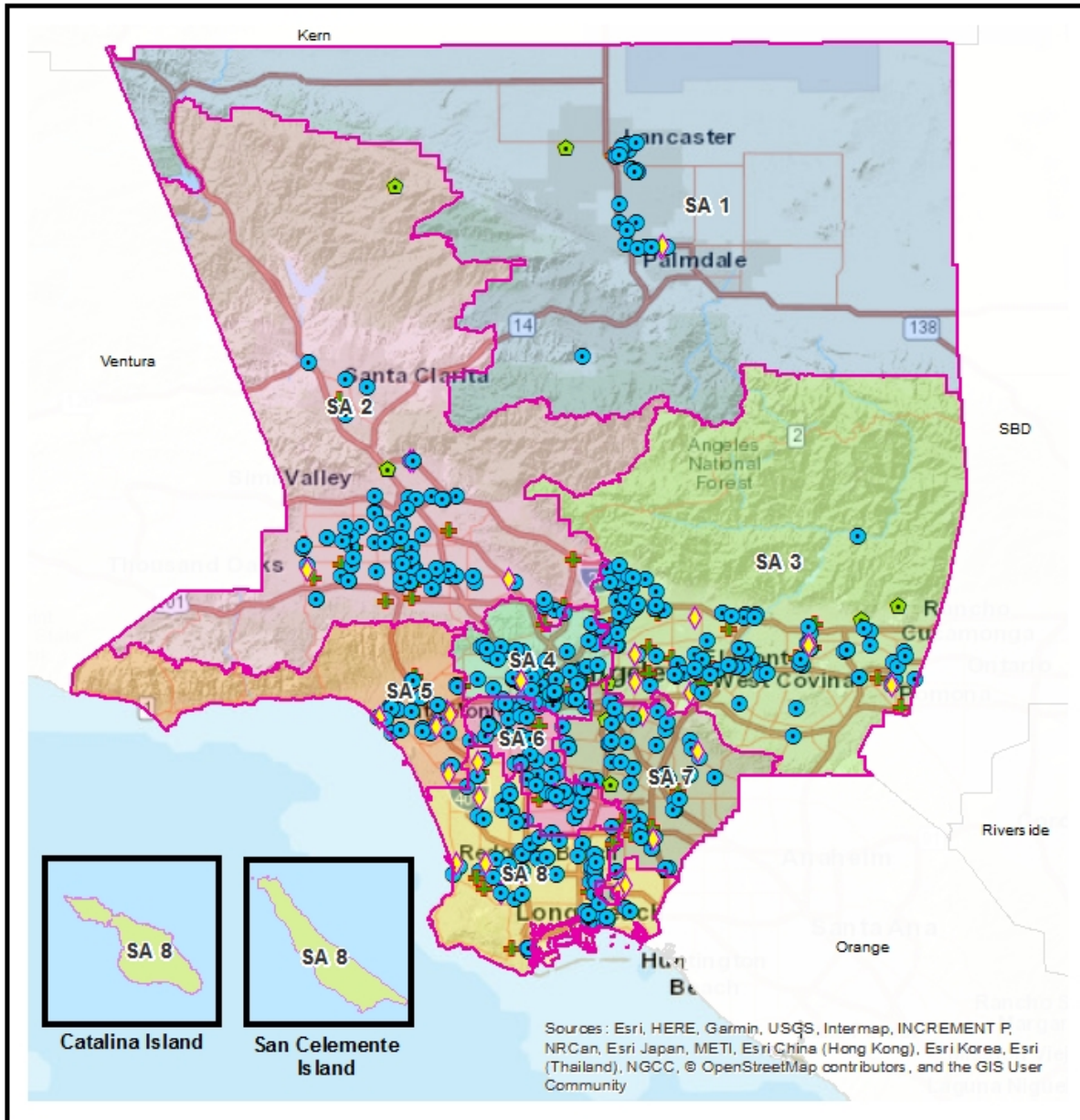
ProviderDirectory@dmh.lacounty.gov

This Provider Directory can be downloaded from the website at:

<http://psbqi.dmh.lacounty.gov/providerdirectory.htm>

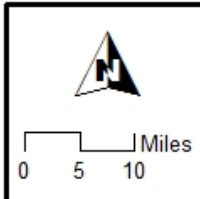
For first time visit and/or new referrals, please contact provider. To obtain Mental Health Information and Services confidentially, please call the 24/7 ACCESS Center Hotline at 1-800-854-7771. (For TDD-TTY, call 1-866-735-2922.) To schedule interpreter services for the hearing impaired (American Sign Language-ASL), please call the 24/7 ACCESS Center Hotline. *MHS refers to individual/group therapy and collateral services. Provider: DMH = Directly-Operated Facility; NGA = Non-Governmental Agency (Contractor); FFS = Fee-for-Service.

LOS ANGELES COUNTY
DEPARTMENT OF
MENTAL HEALTH
hope. recovery. wellbeing.



- 24 HOUR RESIDENTIAL
- CRISIS SERVICES
- JUVENILE JUSTICE
- OUTPATIENT

SA 1	SA 5
SA 2	SA 6
SA 3	SA 7
SA 4	SA 8



Data Source:
Provider data from DMH:
PSB - Quality Improvement Division
Geographic data from eGIS
Repository.
All rights reserved.

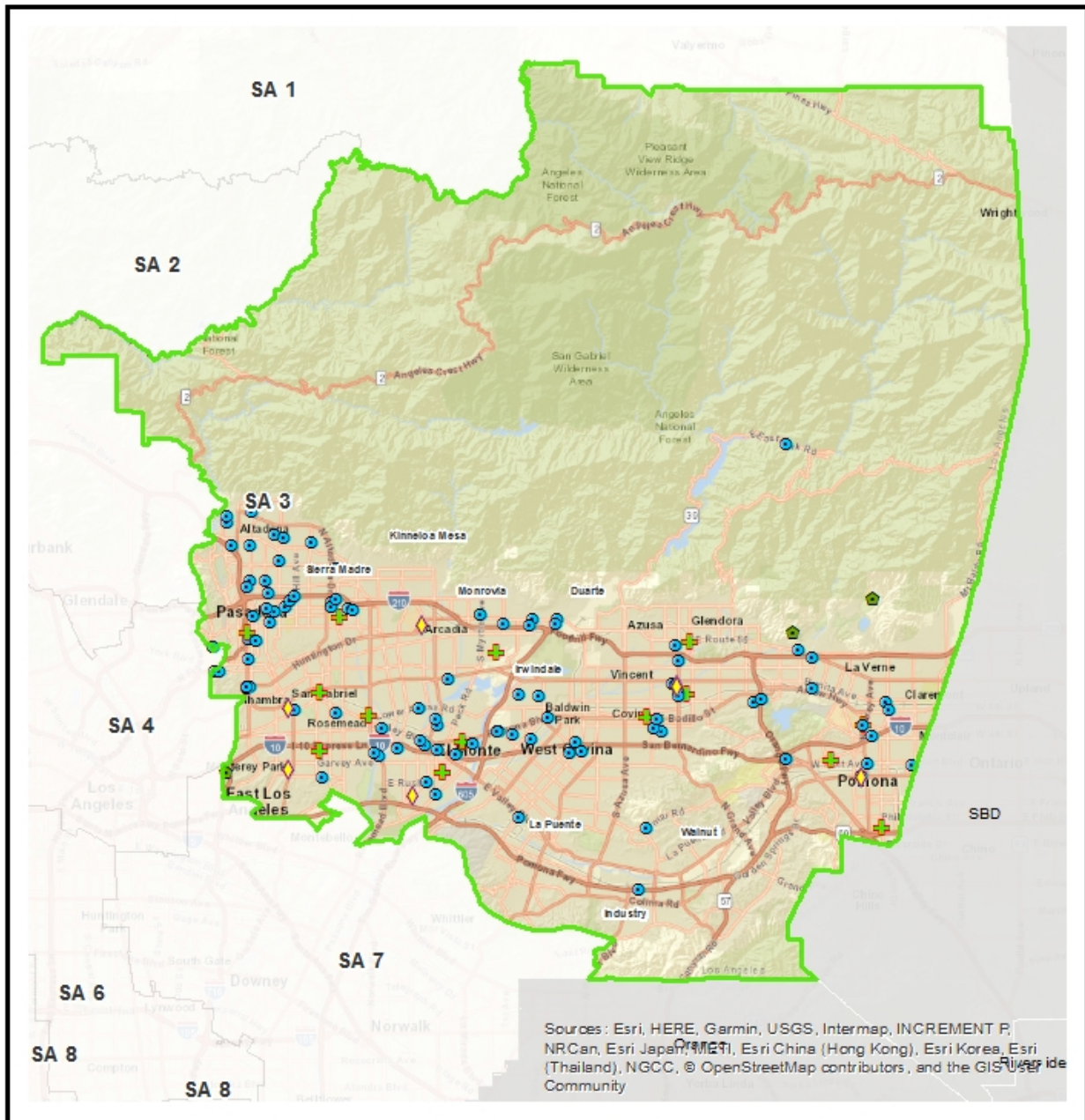
4



Mental Health Service Providers Service Area 3

Los Angeles County Department of Mental Health

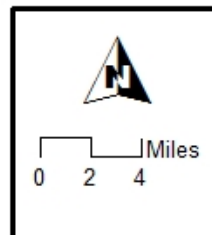
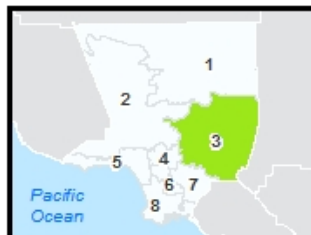
LOS ANGELES COUNTY
DEPARTMENT OF
MENTAL HEALTH
hope. recovery. wellbeing.



Sources: Esri, HERE, Garmin, USGS, Intermap, INCREMENT P, NRCan, Esri Japan, METI, Esri China (Hong Kong), Esri Korea, Esri (Thailand), NGCC, © OpenStreetMap contributors, and the GIS User Community

Provider Type:

- 24 HOUR RESIDENTIAL
- CRISIS SERVICES
- JUVENILE JUSTICE
- OUTPATIENT



Note:

Data Source:

Provider data from DMH:
PSB - Quality Improvement Division
Geographic data from eGIS
Repository.
All rights reserved.

Tues day, March 27, 2018

Service Area 3

**190J 190J TRINITY EL MONTE
11057 BASYE STREET
EL MONTE, CA 91731-1655**

Phone:

Hours of Operation: 24 Hour

Accepting Beneficiaries: No

Accessible By:

Provider:

Supervisory District: 1

Age Group Served: All Ages

Languages: English,
Cultures:

Programs/Services:

ADA Facility: No

Website: Trinity Youth Services

Email: jadams@trinityys.org

List of Practitioners

Not Available

Nov 12, 2020

6

For first time visit and/or new referrals, please contact provider. To obtain Mental Health Information and Services confidentially, please call the 24/7 ACCESS Center Hotline at 1-800-854-7771. (For TDD-TTY, call 1-866-735-2922.) To schedule interpreter services for the hearing impaired (American Sign Language-ASL), please call the 24/7 ACCESS Center Hotline. *MHS refers to individual/group therapy and collateral services. Provider: DMH = Directly-Operated Facility; NGA = Non-Governmental Agency (Contractor); FFS = Fee-for-Service.

Service Area 3

**190K 190K DAVID AND MARGARET STRTP
1350 3RD STREET
LA VERNE, CA 91750-5201**

Phone: 909-596-5921

Hours of Operation: 8:00AM-6:00PM

Accepting Beneficiaries: Yes

Accessible By:

Provider: NGA

Supervisory District: 1

Age Group Served: All Ages

Languages: English, Spanish,
Cultures:

Programs/Services:

ADA Facility: No

Website: www.DavidandMargaret.org

Email:

List of Practitioners

Not Available

Service Area 3

190P 190P ROSEMARY - COTTAGE
3244 E. GREEN STREET
PASADENA, CA 91107-3836

Phone: 626-844-3033

Hours of Operation: MON -FRI, 8:00 AM- 5:00 PM

Accepting Beneficiaries: Yes

Accessible By: By Referral Only

Provider: NGA

Supervisory District: 5

Age Group Served: All Ages

Languages: English, Spanish,
Cultures:

Programs/Services:

ADA Facility: No

Website: www.victor.org

Email:

List of Practitioners

Not Available

Service Area 3

190Q 190Q EGGLESTON BHS - IRWINDALE
13001 RAMONA BLVD . STE. E
IRWINDALE , CA 91706-3752

Phone: 626-480-8170

Hours of Operation: Mon - Fri, 11:00 AM - 7:00 PM

Accepting Beneficiaries: No

Accessible By:

Provider: NGA

Supervisory District: 1

Age Group Served: All Ages

Languages: English,
Cultures:

Programs/Services:

ADA Facility: No

Website:

Email:

List of Practitioners

Not Available

Service Area 3

190R 190R ROSEMARY - GREEN HOUSE
3123 E GREEN STREET
PASADENA, CA 91107-3821

Phone: 626-844-3033

Hours of Operation: Sun - Sat, 9:00 AM - 8:00 PM

Accepting Beneficiaries: Yes

Accessible By: By Referral Only

Provider: NGA

Supervisory District: 5

Age Group Served: All Ages

Languages: English, Spanish,
Cultures:

Programs/Services:

ADA Facility: No

Website: www.victor.org

Email:

List of Practitioners

Not Available

Service Area 3

190X 190X HATHAWAY-SYCAMORES CHILD AND FAMILY SERVICES
2933 EL NIDO DRIVE
ALTADENA, CA 91001-4529

Phone: 626 395 7100

Hours of Operation: Monday to Friday 8 am to 5 pm

Accepting Beneficiaries: Yes

Accessible By: By Referral Only

Provider: NGA

Supervisory District: 5

Age Group Served: 0-20

Languages: English, Spanish,

Cultures: Co-occurring Substance Use Disorders, Disabilities Special Needs, Gender Identity, Homeless Housing, Race Ethnicity, Sexual Orientation, Spirituality, Trauma, Under Represented Populations,

Programs/Services:

ADA Facility: Yes

Website: www.hathaway-sycamores.org

Email:

List of Practitioners

Not Available

Service Area 3

19BV 1943 ROSEMARY CHILDREN'S SERVICES
801 CORPORATE CENTER DR SUITE 202
POMONA, CA 91768-2627

Phone: 909-766-7060

Hours of Operation: MON-FRI 8:00 AM - 5:00 PM

Accepting Beneficiaries: Yes

Accessible By: Phone / Walk-Ins

Provider:

Supervisory District: 1

Age Group Served: 0-20

Languages: English, Spanish,
Cultures:

Programs/Services:

ADA Facility: Yes

Website: www.victor.org

Email:

List of Practitioners

Not Available

Service Area 3

**7286A 7286A FIVE ACRES
867 N FAIR OAKS AVE
Pasadena, CA 91103-3083**

Phone: 626-798-6793

Hours of Operation: MON - FRI 8:30 AM - 6:00 PM; SAT BY APPOINTMENT ON
Accepting Beneficiaries: Yes

Accessible By: Phone / Walk-Ins

Provider:

Supervisory District: 5

Age Group Served: All Ages

Languages: American Sign Language, English, Spanish,

Cultures: Trauma,

Programs/Services:

ADA Facility: Yes

Website: www.5acres.org

Email:

List of Practitioners

Not Available

Service Area 3

7565 7565 LEROY HAYNES CENTER
233 WEST BASELINE ROAD
LA VERNE, CA 91750-2353

Phone: 909-593-2581

Hours of Operation: MON - FRI 9:00 AM - 5:00 PM

Accepting Beneficiaries: Yes

Accessible By:

Provider: NGA

Supervisory District: 1

Age Group Served: All Ages

Languages: English,

Cultures: Trauma,

Programs/Services:

ADA Facility: Yes

Website: www.leroyhaynes.org

Email:

List of Practitioners

Not Available

Service Area 3

7731A 7731A TRI CITY MENTAL HEALTH CENTER
2008 N Garey Avenue
Pomona, CA 91767-2722

Phone: 909-623-6131

Hours of Operation: MON, TUES, WED 8:30 AM - 5:30 PM; THURS 8:30 AM -

Accepting Beneficiaries: Yes

Accessible By: Phone / Walk-Ins

Provider:

Supervisory District: 1

Age Group Served: All Ages

Languages: Arabic, Cambodian, Cantonese, English, Farsi, Spanish,
Cultures:

Programs/Services:

ADA Facility: Yes

Website: <http://tricitymhs.org/>

Email:

List of Practitioners

Not Available

Service Area 3

**7915 7915 PACIFIC CLINICS NEW DIRECTIONS
12921 RAMONA BLVD SUITE F
IRWINDALE, CA 91706-3749**

Phone:

Hours of Operation: MON -FRI 8:00 AM- 5:00 PM

Accepting Beneficiaries: No

Accessible By:

Provider:

Supervisory District: 1

Age Group Served: All Ages

Languages: English,
Cultures:

Programs/Services:

ADA Facility: No

Website: www.Pacificclinics.org

Email:

List of Practitioners

Not Available

Service Area 3

00C505870 AL-ASADI, GHADA
415 W. ROUTE 66 SUITE 202
GLENDORA, CA 91740-4335

Phone: 626-963-4467

Hours of Operation: 9am-5pm

Accepting Beneficiaries: No

Accessible By:

Provider: FFS Outpat

Supervisory District: 1

Age Group Served: All Ages

Languages: English,
Cultures:

Programs/Services:

ADA Facility: No

Website: Not Applicable

Email:

List of Practitioners

Not Available

Service Area 3

00C518850 ALKHOURI WADIE
210 S. GRAND AVE
GLENDORA, CA 91741-4289

Phone: 626-335-1919

Hours of Operation: Call for Hours

Accepting Beneficiaries: No

Accessible By:

Provider: FFS Outpat

Supervisory District: 1

Age Group Served: All Ages

Languages: English,
Cultures:

Programs/Services:

ADA Facility: No

Website:

Email:

List of Practitioners

Not Available

Service Area 3

00G719091 ASKINS HOWARD
960 E GREEN ST
PASADENA, CA 91106-2401

Phone: 626-793-7792

Hours of Operation: Call for Hours

Accepting Beneficiaries: No

Accessible By:

Provider: FFS Outpat

Supervisory District: 5

Age Group Served: All Ages

Languages: English,
Cultures:

Programs/Services:

ADA Facility: No

Website:

Email:

List of Practitioners

Not Available

Service Area 3

7545A Baldwin Park High School
3699 North Holly Ave .
Baldwin Park, CA 91706

Phone:

Hours of Operation: MTThF 8-12, W 9-12

Accepting Beneficiaries: Yes

Accessible By:

Provider:

Supervisory District: 1

Age Group Served: 0-20

Languages: American Sign Language, Arabic, Armenian, Cambodian, Cantonese, English, Farsi, Hmong, Korean, Mandarin, Other Chinese, Russian, Spanish, Tagalog, Vietnamese

Cultures: Co-occurring Substance Use Disorders, Trauma,

Programs/Services:

ADA Facility: Yes

Website: www.cifhs.org

Email:

List of Practitioners

Not Available

Service Area 3

0A1201360 CRUZ, CESAR
415 W. ROUTE 66 SUITE 202
GLENDORA, CA 91740-4335

Phone: 626-963-4467

Hours of Operation: 9am-5pm

Accepting Beneficiaries: No

Accessible By:

Provider: FFS Outpat

Supervisory District: 1

Age Group Served: All Ages

Languages: English,
Cultures:

Programs/Services:

ADA Facility: No

Website: Not Applicable

Email:

List of Practitioners

Not Available

Service Area 3

00A517890 DESHMUKH MUKUND
5353 G STREET
CHINO, CA 91710-5249

Phone: 512 838-6589

Hours of Operation: mON - SUN 9-5

Accepting Beneficiaries: Yes

Accessible By: By Referral Only

Provider: FFS Outpat

Supervisory District: 1

Age Group Served: All Ages

Languages: English,

Cultures: Co-occurring Substance Use Disorders, Veterans,

Programs/Services:

ADA Facility: Yes

Website: na

Email:

List of Practitioners

Not Available

Service Area 3

MF4005800 GARCIA TONY
964 BADILLO STREET SUITE 224
COVINA, CA 91724-2950

Phone: 213-880-4604

Hours of Operation: Call for Hours

Accepting Beneficiaries: No

Accessible By:

Provider: FFS Outpat

Supervisory District: 1

Age Group Served: All Ages

Languages: English,
Cultures:

Programs/Services:

ADA Facility: No

Website:

Email:

List of Practitioners

Not Available

Service Area 3

00A415240 GARG INC BIMLESH
1535 W MERCED AVE STE 300
WEST COVINA, CA 91790-3404

Phone: 6269628451

Hours of Operation: Call for Hours

Accepting Beneficiaries: No

Accessible By:

Provider: FFS Outpat

Supervisory District: 1

Age Group Served: All Ages

Languages: English,
Cultures:

Programs/Services:

ADA Facility: No

Website:

Email:

List of Practitioners

Not Available

Service Area 3

00G812031 GILLESPIE WILLIAM
510 S GRAND AVE
GLENDORA, CA 91741-4291

Phone: 626-914-1980

Hours of Operation: Call for Hours

Accepting Beneficiaries: No

Accessible By:

Provider: FFS Outpat

Supervisory District: 1

Age Group Served: All Ages

Languages: English,
Cultures:

Programs/Services:

ADA Facility: No

Website: n/a

Email: julieorsi@icloud.com

List of Practitioners

Not Available

Service Area 3

00A549550 GUNTUPALLI NAGESWARA
500 WEST BADILLO STREET
COVINA, CA 91722-3762

Phone: 626-339-0288

Hours of Operation: Call for Hours

Accepting Beneficiaries: No

Accessible By:

Provider: FFS Outpat

Supervisory District: 1

Age Group Served: All Ages

Languages: English,
Cultures:

Programs/Services:

ADA Facility: No

Website:

Email:

List of Practitioners

Not Available

Service Area 3

00A436660 JACOB SAID
415 WEST ROUTE 66 SUITE 202
GLENDORA, CA 91740-9998

Phone: 626-963-4467

Hours of Operation: 9am-5pm

Accepting Beneficiaries: No

Accessible By:

Provider: FFS Outpat

Supervisory District: 1

Age Group Served: All Ages

Languages: English,
Cultures:

Programs/Services:

ADA Facility: No

Website: Not Applicable

Email:

List of Practitioners

Not Available

Service Area 3

00A111071 KALPESH BHAVSAR MD PROFESS
4619 ROSEMEAD BLVD
ROSEMEAD, CA 91770-1478

Phone: 619-583-0747

Hours of Operation: Call for Hours

Accepting Beneficiaries: No

Accessible By:

Provider: FFS Outpat

Supervisory District: 1

Age Group Served: All Ages

Languages: English,
Cultures:

Programs/Services:

ADA Facility: No

Website:

Email:

List of Practitioners

Not Available

Service Area 3

00A284260 KAUFMAN SAMUEL
2030 N GAREY AVE
POMONA, CA 91767-2722

Phone: 9099462801

Hours of Operation: n/a - facility based provider - not out-patient

Accepting Beneficiaries: Yes

Accessible By: Phone Only

Provider: FFS Outpat

Supervisory District: 1

Age Group Served: All Ages

Languages: English,
Cultures:

Programs/Services:

ADA Facility: Yes

Website: n/a

Email:

List of Practitioners

Not Available

Service Area 3

00A411342 KHANKHANIAN MOIEZ
933 S SUNSET AVENUE STE 105
WEST COVINA, CA 91790-3410

Phone: 626-338-9000

Hours of Operation: 9-7

Accepting Beneficiaries: No

Accessible By:

Provider: FFS Outpat

Supervisory District: 1

Age Group Served: All Ages

Languages: English,
Cultures:

Programs/Services:

ADA Facility: No

Website: mkhankhanian@gmail.com

Email: nkhanian@gmail.com

List of Practitioners

Not Available

Service Area 3

00A641560 KHIN HENRY
2331 EL CAPITAN AVE
ARCADIA, CA 91006-9998

Phone: 626-574-7102

Hours of Operation: Call for Hours

Accepting Beneficiaries: Yes

Accessible By:

Provider: FFS Outpat

Supervisory District: 1

Age Group Served: All Ages

Languages: English,
Cultures:

Programs/Services:

ADA Facility: No

Website: N/A

Email:

List of Practitioners

Not Available

Service Area 3

MF1696500 LEE KEVIN
436 W 4TH STREET
POMONA, CA 91766-2970

Phone: 909-917-5672

Hours of Operation: Call for Hours

Accepting Beneficiaries: No

Accessible By:

Provider: FFS Outpat

Supervisory District: 1

Age Group Served: All Ages

Languages: English,
Cultures:

Programs/Services:

ADA Facility: No

Website:

Email:

List of Practitioners

Not Available

Service Area 3

00G599310 MAHONEY ALVIN
2222 FOOTHILL BLVD
LA CANADA, CA 91011-9998

Phone: 818-636-8562

Hours of Operation: Call for Hours

Accepting Beneficiaries: No

Accessible By:

Provider: FFS Outpat

Supervisory District: 5

Age Group Served: All Ages

Languages: English,
Cultures:

Programs/Services:

ADA Facility: No

Website:

Email:

List of Practitioners

Not Available

Service Area 3

00A534231 MARKIE ALAN
466 FOOTHILL BLVD
LA CANADA, CA 91011-3518

Phone: 310-201-0757

Hours of Operation: Call for Hours

Accepting Beneficiaries: No

Accessible By:

Provider: FFS Outpat

Supervisory District: 5

Age Group Served: All Ages

Languages: English,
Cultures:

Programs/Services:

ADA Facility: No

Website: www.company.com

Email:

List of Practitioners

Not Available

Service Area 3

00G789330 MCNEEL WAKELIN
4619 N ROSEMEAD BLVD
ROSEMEAD, CA 91770-1478

Phone: 626-286-1191

Hours of Operation: 24 HOURS

Accepting Beneficiaries: No

Accessible By:

Provider: FFS Outpat

Supervisory District: 1

Age Group Served: All Ages

Languages: English,
Cultures:

Programs/Services:

ADA Facility: No

Website: N/A

Email:

List of Practitioners

Not Available

Service Area 3

0A1222710 NASSERIAN, CYRUS
415 W. ROUTE 66 SUITE 202
GLENDORA, CA 91740-4335

Phone: 626-963-4467

Hours of Operation: 9am-5pm

Accepting Beneficiaries: No

Accessible By:

Provider: FFS Outpat

Supervisory District: 1

Age Group Served: All Ages

Languages: English,
Cultures:

Programs/Services:

ADA Facility: No

Website: Not Applicable

Email:

List of Practitioners

Not Available

Service Area 3

00A383540 PATEL RAJENDRA
166 W COLLEGE STREET SUITE A
COVINA, CA 91723-2008

Phone: 626-938-7112

Hours of Operation: Call for Hours

Accepting Beneficiaries: No

Accessible By:

Provider: FFS Outpat

Supervisory District: 1

Age Group Served: All Ages

Languages: English,
Cultures:

Programs/Services:

ADA Facility: No

Website: N/A

Email:

List of Practitioners

Not Available

Service Area 3

00A489510 PHUN KENNETH
2418 SAN GABRIEL BLVD
ROSEMEAD, CA 91770-3674

Phone: 626-288-7321

Hours of Operation: Call for Hours

Accepting Beneficiaries: No

Accessible By:

Provider: FFS Outpat

Supervisory District: 1

Age Group Served: All Ages

Languages: English,
Cultures:

Programs/Services:

ADA Facility: No

Website:

Email:

List of Practitioners

Not Available

Service Area 3

7545A Santa Fe School
4650 Baldwin Park Blvd .
Baldwin Park, CA 91706

Phone:

Hours of Operation: Thursdays 9-11

Accepting Beneficiaries: No

Accessible By:

Provider:

Supervisory District: 1

Age Group Served: 0-20

Languages: American Sign Language, Arabic, Armenian, Cambodian, Cantonese, English, Farsi, Hmong, Korean, Mandarin, Other Chinese, Russian, Spanish, Tagalog, Vietnamese

Cultures:

Programs/Services:

ADA Facility: No

Website: www.cifhs.org

Email:

List of Practitioners

Not Available

Service Area 3

00A989200 SIDHOM, TAGHRID
415 W. ROUTE 66 SUITE 202
GLENDORA, CA 91740-4335

Phone: 626-963-4467

Hours of Operation: Call for Hours

Accepting Beneficiaries: No

Accessible By:

Provider: FFS Outpat

Supervisory District: 1

Age Group Served: All Ages

Languages: English,
Cultures:

Programs/Services:

ADA Facility: No

Website:

Email:

List of Practitioners

Not Available

Service Area 3

7545A Sierra Vista High School
3600 N Frasier St .
Baldwin Park, CA 91706

Phone:

Hours of Operation: Mondays 9-1, Tuesdays 9-3, Thursdays 9-3

Accepting Beneficiaries: Yes

Accessible By:

Provider:

Supervisory District: 1

Age Group Served: All Ages

Languages: American Sign Language, Arabic, Armenian, Cambodian, Cantonese, English, Farsi, Hmong, Korean, Mandarin, Other Chinese, Russian, Spanish, Tagalog, Vietnamese

Cultures: Trauma,

Programs/Services:

ADA Facility: Yes

Website: www.cifhs.org

Email:

List of Practitioners

Not Available

Service Area 3

PSY099300 SNYDER PHILIP
960 E GREEN ST
PASADENA, CA 91106-2401

Phone: 626-793-7792

Hours of Operation: Call for Hours

Accepting Beneficiaries: No

Accessible By:

Provider: FFS Outpat

Supervisory District: 5

Age Group Served: All Ages

Languages: English,
Cultures:

Programs/Services:

ADA Facility: No

Website:

Email:

List of Practitioners

Not Available

Service Area 3

7545A Tracy Elementary School
13350 Tracy St .
Baldwin Park, CA 91706

Phone:

Hours of Operation: Tuesdays 9-2, Thursdays 9-3

Accepting Beneficiaries: No

Accessible By:

Provider:

Supervisory District: 1

Age Group Served: 0-20

Languages: American Sign Language, Arabic, Armenian, Cambodian, Cantonese, English, Farsi, Hmong, Korean, Mandarin, Other Chinese, Russian, Spanish, Tagalog, Vietnamese

Cultures:

Programs/Services:

ADA Facility: Yes

Website: www.cifhs.org

Email:

List of Practitioners

Not Available

Service Area 3

20A117380 WANG, SAMBIN
415 W. ROUTE 66 SUITE 202
GLENDORA, CA 91740-4335

Phone: 626-963-4467

Hours of Operation: 9am-5pm

Accepting Beneficiaries: No

Accessible By:

Provider: FFS Outpat

Supervisory District: 1

Age Group Served: All Ages

Languages: English,
Cultures:

Programs/Services:

ADA Facility: No

Website: Not Applicable

Email:

List of Practitioners

Not Available

Service Area 3

24 HOUR/RESIDENTIAL

7243 7243 BRIDGES - CASITAS ESPERANZA
11931 ELLIOTT AVE
EL MONTE, CA 91732-0001

Phone: 626-350-5304

Hours of Operation: 24 HOURS

Accepting Beneficiaries: No

Accessible By: Phone / Walk-Ins

Provider: NGA

Supervisory District: 1

Age Group Served: All Ages

Languages: English, Spanish,

Cultures:

Programs/Services: COMMUNITY OUTREACH, LONG TERM RESIDENTIAL,
MENTAL HEALTH SERVICES* (MHS)

ADA Facility: Yes

Website: www.bridgesrehab.org

Email: info@bridgesrehab.org

List of Practitioners

Not Available

Service Area 3

24 HOUR/RESIDENTIAL

7244 7244 BRIDGES - CASITAS TRANQUILAS
11929 ELLIOTT AVE
EL MONTE, CA 91732-0001

Phone: 626-350-5304

Hours of Operation: 24 HOURS

Accepting Beneficiaries: No

Accessible By: Phone Only

Provider: NGA

Supervisory District: 1

Age Group Served: All Ages

Languages: English, Spanish,

Cultures:

Programs/Services: LONG TERM RESIDENTIAL

ADA Facility: Yes

Website: www.bridgesrehab.org

Email: info@bridgesrehab.org

List of Practitioners

Not Available

Service Area 3

24 HOUR/RESIDENTIAL

7595 7595 BRIDGES/PROJECT INDEPENDENCE
11927 ELLIOTT AVENUE
EL MONTE, CA 91732-3740

Phone: 626-350-5304

Hours of Operation: MON-FRI 8:00 am to 4:30 pm

Accepting Beneficiaries: Yes

Accessible By: Phone / Walk-Ins

Provider: NGA

Supervisory District: 1

Age Group Served: All Ages

Languages: English, Spanish,

Cultures: Co-occurring Substance Use Disorders, Gender Identity, Homeless Housing, Race Ethnicity, Under Represented Populations,

Programs/Services: LONG TERM RESIDENTIAL, HOUSING, MEDICATION SUPPORT, MENTAL HEALTH SERVICES* (MHS), TARGETED CASE MANAGEMENT (TCM), CLIENT SUPPORTIVE SERVICES

ADA Facility: Yes

Website: www.bridgesrehab.org

Email: info@bridgesrehab.org

List of Practitioners

Not Available

Service Area 3

COMMUNITY OUTREACH

7834 7834 ASIAN PACIFIC HEALTH CARE VENTURE INC
9960 BALDWIN PLACE
EL MONTE, CA 91731-2204

Phone: 323-644-3880

Hours of Operation: M-F 8:00AM-5:00PM

Accepting Beneficiaries: No

Accessible By: MON -FRI 8:00 AM- 5:00 PM

Provider: NGA

Supervisory District: 1

Age Group Served: All Ages

Languages: English,

Cultures:

Programs/Services: OUTREACH SERVICES

ADA Facility: No

Website: www.aphcv.org

Email:

List of Practitioners

Not Available

Service Area 3

COMMUNITY OUTREACH, SUPPORT SERVICES

7870 7870 SHARE PRRCH
602 W HELLMAN AVE
MONTEREY PARK, CA 91754-1006

Phone: 310-846-5279

Hours of Operation: Call for Hours

Accepting Beneficiaries: No

Accessible By: CONTACT PROVIDER

Provider: NGA

Supervisory District: 1

Age Group Served: All Ages

Languages: English,

Cultures:

Programs/Services: COMMUNITY OUTREACH SERVICES, CLIENT SUPPORTIVE SERVICES

ADA Facility: No

Website: shareselfhelp.org

Email:

List of Practitioners

Not Available

Service Area 3

CRISIS SERVICES

1932 1932 WSGVMET
250 W HUNTINGTON DRIVE
ARCADIA, CA 91007-3401

Phone: 626-574-5123

Hours of Operation: MON - FRI 8:00 AM - 5:00 PM

Accepting Beneficiaries: Yes

Accessible By: FIELD RESPONSE ONLY

Provider: DO

Supervisory District: 5

Age Group Served: All Ages

Languages: English,

Cultures:

Programs/Services: MENTAL HEALTH SERVICES* (MHS), TARGETED CASE
MANAGEMENT, CRISIS INTERVENTION, COMMUNITY
OUTREACH SERVICES,

ADA Facility: Yes

Website: www.dmh.lacounty.gov

Email:

List of Practitioners

Not Available

Service Area 3

CRISIS SERVICES

1942 1942 SGMET
1359 N GRAND AVENUE
COVINA, CA 91724-1016

Phone: 626-430-2984

Hours of Operation: TUES-WED 8:30 AM - 7:00 PM

Accepting Beneficiaries: Yes

Accessible By: FIELD RESPONSE ONLY

Provider: DO

Supervisory District: 1

Age Group Served: All Ages

Languages: English,

Cultures:

Programs/Services: MENTAL HEALTH SERVICES* (MHS), TARGETED CASE
MANAGEMENT, CRISIS INTERVENTION, COMMUNITY
OUTREACH SERVICES,

ADA Facility: Yes

Website: www.dmh.lacounty.gov

Email:

List of Practitioners

Not Available

Service Area 3

CRISIS SERVICES

7217 7217 MET
1441 SANTA ANITA AVE
SOUTH EL MONTE, CA 91733-3311

Phone: 626-258-3002

Hours of Operation: MON - FRI 8:00 AM - 5:00 PM

Accepting Beneficiaries: Yes

Accessible By: FIELD RESPONSE ONLY

Provider: DO

Supervisory District: 1

Age Group Served: All Ages

Languages: English,

Cultures: Disabilities Special Needs, Homeless Housing, Race Ethnicity, Trauma, Under Represented Populations,

Programs/Services: MENTAL HEALTH SERVICES* (MHS), TARGETED CASE MANAGEMENT, CRISIS INTERVENTION, COMMUNITY OUTREACH SERVICES

ADA Facility: Yes

Website: www.dmh.lacounty.gov

Email:

List of Practitioners

Not Available

Service Area 3

CRISIS SERVICES

7621 7621 EOB CRISIS AND HOMELESS ARCADIA
1359 N GRAND AVE .
COVINA, CA 91724-1016

Phone: 626-430-2901

Hours of Operation: MON -FRI 7:30 AM- 5:00 PM

Accepting Beneficiaries: Yes

Accessible By: FIELD RESPONSE ONLY

Provider: DO

Supervisory District: 1

Age Group Served: All Ages

Languages: English,

Cultures:

Programs/Services: COMMUNITY OUTREACH SERVICES, CRISIS INTERVENTION,
MENTAL HEALTH SERVICES* (MHS), TARGETED CASE
MANAGEMENT,

ADA Facility: No

Website: www.dmh.lacounty.gov

Email:

List of Practitioners

Not Available

Service Area 3

CRISIS SERVICES

7921 7921 SA3 SB82 MOBILE TRIAGE TEAM
1359 N GRAND AVE .
COVINA, CA 91724-1016

Phone: 626-430-2908

Hours of Operation: MON -FRI 8:00 AM- 5:00 PM

Accepting Beneficiaries: No

Accessible By: BY REFERRAL

Provider: DO

Supervisory District: 1

Age Group Served: All Ages

Languages: English,

Cultures:

Programs/Services: MENTAL HEALTH SERVICES* (MHS), CRISIS INTERVENTION, TARGETED CASE MANAGEMENT, COMMUNITY OUTREACH SERVICES

ADA Facility: No

Website: www.dmh.lacounty.gov

Email:

List of Practitioners

Not Available

Service Area 3

CRISIS SERVICES

7982 7982 AMET
211 SOUTH FIRST STREET
ALHAMBRA, CA 91801-3706

Phone: 626-570-5151

Hours of Operation: MON - FRI 8:00 AM - 5:00 PM

Accepting Beneficiaries: Yes

Accessible By: FIELD RESPONSE ONLY

Provider: DO

Supervisory District: 1

Age Group Served: All Ages

Languages: English,

Cultures:

Programs/Services: MENTAL HEALTH SERVICES* (MHS), TARGETED CASE
MANAGEMENT, CRISIS INTERVENTION, COMMUNITY
OUTREACH SERVICES,

ADA Facility: Yes

Website: www.dmh.lacounty.gov

Email:

List of Practitioners

Not Available

Service Area 3

CRISIS SERVICES

7991 7991 PMET
490 W MISSION BLVD
POMONA, CA 91766-1608

Phone: 909-620-2117

Hours of Operation: MON-THURS 8:00 AM TO 6:30 PM

Accepting Beneficiaries: Yes

Accessible By: FILED RESPONSE SERVICES

Provider: DO

Supervisory District: 1

Age Group Served: All Ages

Languages: English,

Cultures:

Programs/Services: MENTAL HEALTH SERVICES, TARGETED CASE
MANAGEMENT, CRISIS INTERVENTION, COMMUNITY
OUTREACH SERVICES

ADA Facility: Yes

Website: www.dmh.lacounty.gov

Email:

List of Practitioners

Not Available

Service Area 3

CRISIS SERVICES

7993 7993 MPMET
320 WEST NEWMARK AVE
MONTEREY PARK, CA 91754-2818

Phone: 626-307-1404

Hours of Operation: TUESDAY-FRIDAY 7:30 AM-6:00 PM

Accepting Beneficiaries: Yes

Accessible By: FIELD RESPONSE SERVICES

Provider: DO

Supervisory District: 1

Age Group Served: All Ages

Languages: English,

Cultures:

Programs/Services: MENTAL HEALTH SERVICES*(MHS) CRISIS INTERVENTION,
CASE MANAGEMENT, COMMUNITY OUTREACH SERVICES

ADA Facility: Yes

Website: www.dmh.lacounty.gov

Email:

List of Practitioners

Not Available

Service Area 3

JUVENILE JUSTICE

7458 7458 JUVENILE COURT MENTAL HLTH SVS
201 CENTRE PLAZA DRIVE
MONTEREY PARK, CA 91754-2142

Phone: 323-526-6362

Hours of Operation: MON - FRI 8:00 AM - 5:00 PM

Accepting Beneficiaries: No

Accessible By: BY REFERRAL ONLY

Provider: DO

Supervisorial District: 1

Age Group Served: All Ages

Languages: English,

Cultures:

Programs/Services: MEDICATION SUPPORT, MENTAL HEALTH SERVICES* (MHS),
TARGETED CASE MANAGEMENT (TCM)

ADA Facility: No

Website: www.dmh.lacounty.gov

Email:

List of Practitioners

Not Available

Service Area 3

OUTPATIENT

190N 190N ROSEMARY - 500 HOUSE
500 S OAKLAND AVENUE
PASADENA, CA 91101-3330

Phone: 626-844-3033

Hours of Operation: 8:30AM-5:00PM

Accepting Beneficiaries: Yes

Accessible By: By Referral Only

Provider: NGA

Supervisory District: 5

Age Group Served: All Ages

Languages: English, Spanish,

Cultures:

Programs/Services: CRISIS INTERVENTION, MEDICATION SUPPORT,
PSYCHOLOGICAL TESTING, TARGETED CASE MANAGEMENT,
THERAPEUTIC BEHAVIORAL SERVICES (TBS)

ADA Facility: No

Website: www.victor.org

Email:

List of Practitioners

Not Available

Service Area 3

OUTPATIENT

1910 1910 PUSD MENTAL HEALTH SERVICES - FPA
3126 GLENROSE AVENUE
ALTADENA, CA 91001-4328

Phone: 626-396-5920

Hours of Operation: MON - FRI 8:00 AM - 5:00 PM

Accepting Beneficiaries: Yes

Accessible By: BY REFERRAL ONLY

Provider: NGA

Supervisory District: 5

Age Group Served: All Ages

Languages: English, Spanish,

Cultures: Gender Identity, Race Ethnicity, Sexual Orientation, Trauma, Under Represented Populations,

Programs/Services: MENTAL HEALTH SERVICES* (MHS), CRISIS INTERVENTION, MEDICATION SUPPORT, TARGETED CASE MANAGEMENT

ADA Facility: Yes

Website: <https://www.pusd.us/domain/1327>

Email:

List of Practitioners

Not Available

Service Area 3

OUTPATIENT

**1917 1917 ARCADIA MHS
330 EAST LIVE OAK AVE
ARCADIA, CA 91006-5617**

Phone: 626-254-1400

Hours of Operation: MON - FRI 8:00 AM - 5:00 PM

Accepting Beneficiaries: Yes

Accessible By: MON - FRI 8:00 AM - 5:00 PM

Provider: DO

Supervisory District: 1

Age Group Served: All Ages

Languages: Cantonese, English, Mandarin, Spanish,

Cultures: Co-occurring Substance Use Disorders, Homeless Housing, Race Ethnicity, Spirituality, Trauma, Under Represented Populations, Veterans,

Programs/Services: DUAL DIAGNOSIS, FULL SERVICE PARTNERSHIP (FSP), LIFE SUPPORT, MENTAL HEALTH SERVICES* (MHS), TARGETED CASE MANAGEMENT (TCM), WELLNESS CENTER

ADA Facility: Yes

Website: www.dmh.lacounty.gov

Email:

List of Practitioners

Not Available

Service Area 3

OUTPATIENT

1960 1960 HILLSIDES STRTP
940 AVENUE 64
PASADENA, CA 91105-2711

Phone: 323-254-2274

Hours of Operation: MON - FRI 8:00 AM - 5:00 PM

Accepting Beneficiaries: Yes

Accessible By: By Referral Only

Provider: NGA

Supervisory District: 1

Age Group Served: All Ages

Languages: English, Spanish,

Cultures: Co-occurring Substance Use Disorders, Disabilities Special Needs, Forensic Legal, Gender Identity, Homeless Housing, Race Ethnicity, Sexual Orientation, Spirituality, Trauma, Under Represented Populations, Veterans,

Programs/Services: MENTAL HEALTH SERVICES* (MHS), CRISIS INTERVENTION, TARGETED CASE MANAGEMENT, MEDICATION SUPPORT

ADA Facility: Yes

Website: www.hillsides.org

Email:

List of Practitioners

Not Available

Service Area 3

OUTPATIENT

1974 1974 PACIFIC CLINICS PASADENA FAMILY SERVICES
66 HURLBUT STREET
PASADENA, CA 91105-4025

Phone: 562-949-8455

Hours of Operation: MON - FRI 9:00 AM - 5:00 PM

Accepting Beneficiaries: Yes

Accessible By: CONTACT PROVIDER

Provider: NGA

Supervisory District: 1

Age Group Served: All Ages

Languages: Armenian, English, Mandarin, Spanish, Tagalog,

Cultures:

Programs/Services: CRISIS INTERVENTION, INTENSIVE, MEDICATION SUPPORT, MENTAL HEALTH SERVICES* (MHS), PSYCHOLOGICAL TESTING, TARGETED CASE MANAGEMENT (TCM), THERAPEUTIC BEHAVIORAL SERVICES (TBS), WELLNESS CENTER

ADA Facility: Yes

Website: www.Pacificclinics.org

Email:

List of Practitioners

Not Available

Service Area 3

OUTPATIENT

1979 1979 PACIFIC CLINICS EAST
902 S MYRTLE AVENUE
MONROVIA, CA 91016-3427

Phone: 626-441-4221

Hours of Operation: MON - FRI 9:00 AM - 5:00 PM

Accepting Beneficiaries: No

Accessible By: CONTACT PROVIDER

Provider: NGA

Supervisory District: 1

Age Group Served: All Ages

Languages: English,

Cultures:

Programs/Services: CRISIS INTERVENTION, MEDICATION SUPPORT, MENTAL HEALTH SERVICES* (MHS), PSYCHOLOGICAL TESTING, TARGETED CASE MANAGEMENT (TCM)

ADA Facility: No

Website: www.Pacificclinics.org

Email:

List of Practitioners

Not Available

Service Area 3

OUTPATIENT

1991 1991 BIENVENIDOS VILLAGE
255 N SAN GABRIEL BLVD
PASADENA, CA 91107-3429

Phone: 213-785-5906

Hours of Operation: MON - FRI 8:00 AM - 5:00 PM

Accepting Beneficiaries: Yes

Accessible By: Phone / Walk-Ins

Provider: NGA

Supervisory District: 5

Age Group Served: All Ages

Languages: English, Spanish,

Cultures: Co-occurring Substance Use Disorders, Disabilities Special Needs, Forensic Legal, Gender Identity, Homeless Housing, Race Ethnicity, Sexual Orientation, Spirituality, Trauma, Under Represented Populations, Veterans,

Programs/Services: MENTAL HEALTH SERVICES* (MHS), CRISIS INTERVENTION, TARGETED CASE MANAGEMENT, MEDICATION SUPPORT

ADA Facility: No

Website: www.hillsides.org

Email:

List of Practitioners

Not Available

Service Area 3

OUTPATIENT

7019 7019T Alma Family Services Walnut Op
9101 WHITTIER BLVD
PICO RIVERA, CA 90660-2405

Phone: 626-965-4463

Hours of Operation: MON - FRI 8:00 AM - 6:00 PM & SAT 8:30 AM - 4:00 P

Accepting Beneficiaries: Yes

Accessible By: By Referral Only

Provider: NGA

Supervisory District: 1

Age Group Served: All Ages

Languages: English, Spanish,

Cultures: Disabilities Special Needs, Trauma, Under Represented Populations,

Programs/Services: MEDICATION SUPPORT, MENTAL HEALTH SERVICES* (MHS), TARGETED CASE MANAGEMENT (TCM)

ADA Facility: Yes

Website: <http://www.almafamilyservices.org/>

Email:

List of Practitioners

Not Available

Service Area 3

OUTPATIENT

**7072 7072 MENTAL HEALTH COURT LINKAGE PROGRM
1499 HUNTINGTON DR STE 101
SOUTH PASADENA, CA 91030-9998**

Phone: 213-974-9083

Hours of Operation: MON - FRI 8:00 AM - 5:00 PM

Accepting Beneficiaries: No

Accessible By: BY REFERRAL ONLY

Provider: DO

Supervisorial District: 1

Age Group Served: All Ages

Languages: English,

Cultures:

Programs/Services: MENTAL HEALTH SERVICES* (MHS)

ADA Facility: No

Website: www.dmh.lacounty.gov

Email:

List of Practitioners

Not Available

Service Area 3

OUTPATIENT

7101 7101 ASIAN PACIFIC FAMILY CENTER
9353 VALLEY BLVD
ROSEMEAD, CA 91770-1934

Phone: 626-287-2988

Hours of Operation: MON, WED, FRI 9:00 AM - 5:00 PM; TUES, THURS 9:00

Accepting Beneficiaries: Yes

Accessible By: CONTACT PROVIDER

Provider: NGA

Supervisory District: 1

Age Group Served: All Ages

Languages: Cambodian, English, Korean, Mandarin, Other Chinese, Spanish, Vietnamese

Cultures: Disabilities Special Needs, Trauma, Under Represented Populations,

Programs/Services: CRISIS INTERVENTION, DUAL DIAGNOSIS, FULL SERVICE PARTNERSHIP (FSP), MEDICATION SUPPORT, MENTAL HEALTH SERVICES* (MHS), PSYCHOLOGICAL TESTING, SPECIALIZED FOSTER CARE, TARGETED CASE MANAGEMENT (TCM)

ADA Facility: Yes

Website: www.Pacificclinics.org

Email:

List of Practitioners

Not Available

Service Area 3

OUTPATIENT

**7131 7131 THE RIVER COMMUNITY
23701 E. EAST FORK ROAD
AZUSA, CA 91702-1477**

Phone: 626 250-3291

Hours of Operation: MON - FRI 9:00 AM - 5:00 PM

Accepting Beneficiaries: Yes

Accessible By: Phone Only

Provider: NGA

Supervisory District: 1

Age Group Served: All Ages

Languages: English, Spanish,

Cultures: Co-occurring Substance Use Disorders, Forensic Legal, Homeless Housing,

Programs/Services: CO-OCCURRING DISORDERS, DAY REHABILITATION, LIFE SUPPORT, MEDICATION SUPPORT, MENTAL HEALTH SERVICES* (MHS)

ADA Facility: Yes

Website: <http://www.socialmodelrecovery.org/>

Email:

List of Practitioners

Not Available

Service Area 3

OUTPATIENT

7173 7173 ENKI LPVMHC-LA PUENTE
160 SOUTH 7TH AVENUE
LA PUENTE, CA 91746-3211

Phone: 626-961-8971

Hours of Operation: M, Tu, Wed, Fri 8am-5pm, Thurs 9am-6pm

Accepting Beneficiaries: Yes

Accessible By: CONTACT PROVIDER

Provider: NGA

Supervisory District: 1

Age Group Served: All Ages

Languages: Arabic, Armenian, Cantonese, English, Spanish,

Cultures:

Programs/Services: CRISIS INTERVENTION, FIELD CAPABLE CLINICAL SERVICES (FCCS), CCS, FULL SERVICE PARTNERSHIP (FSP), MEDICATION SUPPORT, MENTAL HEALTH SERVICES* (MHS), PSYCHOLOGICAL TESTING, TARGETED CASE MANAGEMENT (TCM), WELLNESS CENTER, WELLNESS ADJUNCT, CALWORKS, PATH (MIT), CORS, S

ADA Facility: Yes

Website: www.ehrs.com

Email:

List of Practitioners

Not Available

Service Area 3

OUTPATIENT

**7184 7184 ALMANSOR EDUCATION CENTER
1955 FREMONT AVENUE
SOUTH PASADENA, CA 91030-4507**

Phone: 323-344-5538

Hours of Operation: MON - FRI 8:00 AM - 6:00 PM

Accepting Beneficiaries: No

Accessible By: CONTACT PROVIDER

Provider: NGA

Supervisory District: 1

Age Group Served: All Ages

Languages: Armenian, Cantonese, English, Mandarin, Other Chinese, Russian, Spanish, Tagalog,

Cultures:

Programs/Services: CRISIS INTERVENTION, MEDICATION SUPPORT, MENTAL HEALTH SERVICES* (MHS), PSYCHOLOGICAL TESTING, TARGETED CASE MANAGEMENT (TCM)

ADA Facility: Yes

Website: www.redesignlearning.org

Email:

List of Practitioners

Not Available

Service Area 3

OUTPATIENT

7187 7187 SSG/APCTC METRO CENTER
600 ST PAUL AVENUE SUITE 101
LOS ANGELES, CA 90017-2038

Phone: (626)248-1800

Hours of Operation: MON - FRI 8:00 AM - 5:00 PM

Accepting Beneficiaries: Yes

Accessible By: Phone Only

Provider: NGA

Supervisory District: 1

Age Group Served: All Ages

Languages: Cambodian, Cantonese, English, Korean, Mandarin, Tagalog, Vietnamese

Cultures:

Programs/Services: CRISIS INTERVENTION, FULL SERVICE PARTNERSHIP (FSP), MEDICATION SUPPORT, MENTAL HEALTH SERVICES* (MHS), PSYCHOLOGICAL TESTING, TARGETED CASE MANAGEMENT,

ADA Facility: Yes

Website: www.ssg.org

Email:

List of Practitioners

Not Available

Service Area 3

OUTPATIENT

7224 7224 PACIFIC CLINICS/ACT WEST COVINA
1517 W GARVEY AVE NORTH
WEST COVINA, CA 91790-2138

Phone: 626-962-6061

Hours of Operation: MON - FRI 9:00 AM - 5:00 PM

Accepting Beneficiaries: No

Accessible By: CONTACT PROVIDER

Provider: NGA

Supervisory District: 1

Age Group Served: 21+

Languages: English, Spanish,

Cultures:

Programs/Services: CRISIS INTERVENTION, FULL SERVICE PARTNERSHIP (FSP),
MEDICATION SUPPORT, MENTAL HEALTH SERVICES* (MHS),
PSYCHOLOGICAL TESTING, TARGETED CASE MANAGEMENT
(TCM)

ADA Facility: Yes

Website: www.Pacificclinics.org

Email:

List of Practitioners

Not Available

Service Area 3

OUTPATIENT

7227 7227 PACIFIC CLINICS EAST YOUTH DAY TREATMENT
902 S MYRTLE AVENUE
MONROVIA, CA 91016-3427

Phone: 626-303-1541

Hours of Operation: MON - FRI 9:00 AM - 5:00 PM

Accepting Beneficiaries: No

Accessible By: CONTACT PROVIDER

Provider: NGA

Supervisory District: 1

Age Group Served: All Ages

Languages: English,

Cultures:

Programs/Services: CRISIS INTERVENTION, MEDICATION SUPPORT, MENTAL HEALTH SERVICES* (MHS), PSYCHOLOGICAL TESTING, TARGETED CASE MANAGEMENT (TCM)

ADA Facility: No

Website: www.Pacificclinics.org

Email:

List of Practitioners

Not Available

Service Area 3

OUTPATIENT

7231 7231 HILLSIDES FAMILY RESOURCE CENTER
149 PASADENA AVE
SOUTH PASADENA, CA 91030-2947

Phone: 323-254-2274

Hours of Operation: MON - FRI 8:30 AM - 5:00 PM

Accepting Beneficiaries: Yes

Accessible By: Phone / Walk-Ins

Provider: NGA

Supervisory District: 1

Age Group Served: All Ages

Languages: English, Spanish,

Cultures: Co-occurring Substance Use Disorders, Disabilities Special Needs, Forensic Legal, Gender Identity, Homeless Housing, Race Ethnicity, Sexual Orientation, Spirituality, Trauma, Under Represented Populations, Veterans,

Programs/Services: MENTAL HEALTH SERVICES* (MHS), SPECIALIZED FOSTER CARE, TARGETED CASE MANAGEMENT (TCM)

ADA Facility: Yes

Website: www.hillsides.org

Email:

List of Practitioners

Not Available

Service Area 3

OUTPATIENT

7284 7284 PACIFIC CLINICS-ACT EL MONTE
9864 BALDWIN PLACE
EL MONTE, CA 91731-2202

Phone: 626-962-6061

Hours of Operation: MON - FRI 9:00 AM - 5:00 PM

Accepting Beneficiaries: Yes

Accessible By: CONTACT PROVIDER

Provider: NGA

Supervisory District: 1

Age Group Served: 21+

Languages: Cantonese, English, Spanish, Tagalog,

Cultures: Co-occurring Substance Use Disorders,

Programs/Services: CRISIS INTERVENTION, MEDICATION SUPPORT, MENTAL HEALTH SERVICES* (MHS), PSYCHOLOGICAL TESTING, TARGETED CASE MANAGEMENT (TCM)

ADA Facility: Yes

Website: www.Pacificclinics.org

Email:

List of Practitioners

Not Available

Service Area 3

OUTPATIENT

**7302 7302 CHILDREN'S BUREAU OF SO CAL-SAN GABRIEL
14600 RAMONA BLVD
BALDWIN PARK, CA 91706-3363**

Phone: 626-337-8811

Hours of Operation: MON & THURS: 8:30 AM- 7:00 PM; TUES & WED: 8:30 AM- 9:00 PM; FRI: 8:30 AM- 4:30 PM; SAT: BY APPT.

Accepting Beneficiaries: Yes

Accessible By: CONTACT PROVIDER

Provider: NGA

Supervisory District: 1

Age Group Served: 0-20

Languages: English, Spanish,

Cultures:

Programs/Services: MEDICATION SUPPORT, MENTAL HEALTH SERVICES* (MHS), PSYCHOLOGICAL TESTING, TARGETED CASE MANAGEMENT (TCM)

ADA Facility: Yes

Website: www.all4kids.org

Email:

List of Practitioners

Not Available

Service Area 3

OUTPATIENT

7330 7330 FOOTHILL FAMILY SERVICE - OAK KNOLL
118 S OAK KNOLL AVENUE
PASADENA, CA 91101-2611

Phone: 626-993-3000

Hours of Operation: MON - THURS 8:00 AM - 8:00 PM; FRI 8:00 AM - 5:00

Accepting Beneficiaries: Yes

Accessible By: Phone / Walk-Ins

Provider: NGA

Supervisory District: 5

Age Group Served: 0-20

Languages: Armenian, Cantonese, English, Mandarin, Spanish,
Cultures:

Programs/Services: CRISIS INTERVENTION, FIELD CAPABLE CLINICAL SERVICES (FCCS), FULL SERVICE PARTNERSHIP (FSP), CHILDREN MEDICATION SUPPORT, MENTAL HEALTH SERVICES* (MHS), PSYCHOLOGICAL TESTING, SPECIALIZED FOSTER CARE, TARGETED CASE MANAGEMENT (TCM)

ADA Facility: Yes

Website: www.foothillfamily.org

Email:

List of Practitioners

Not Available

Service Area 3

OUTPATIENT

7331 7331 FOOTHILL FAMILY SERVICE-WEST COVINA
1530 W CAMERON AVE
WEST COVINA, CA 91790-2711

Phone: 626-993-3000

Hours of Operation: MON - THURS 8:00 AM - 8:00 PM; FRI 8:00 AM - 5:00

Accepting Beneficiaries: Yes

Accessible By: Phone / Walk-Ins

Provider: NGA

Supervisory District: 1

Age Group Served: 0-20

Languages: Cantonese, English, Mandarin, Spanish,
Cultures:

Programs/Services: CRISIS INTERVENTION, FIELD CAPABLE CLINICAL SERVICES (FCCS), FULL SERVICE PARTNERSHIP (FSP), MEDICATION SUPPORT, MENTAL HEALTH SERVICES* (MHS), PSYCHOLOGICAL TESTING, SPECIALIZED FOSTER CARE, TARGETED CASE MANAGEMENT (TCM)

ADA Facility: Yes

Website: www.foothillfamily.org

Email:

List of Practitioners

Not Available

Service Area 3

OUTPATIENT

7332 7332 HILLSIDES OUTPATIENT
940 AVENUE 64
PASADENA, CA 91105-2711

Phone: 323-54-2274

Hours of Operation: 24 HOURS

Accepting Beneficiaries: Yes

Accessible By: By Referral Only

Provider: NGA

Supervisory District: 1

Age Group Served: All Ages

Languages: American Sign Language, English, Spanish,

Cultures: Co-occurring Substance Use Disorders, Disabilities Special Needs, Forensic Legal, Gender Identity, Homeless Housing, Race Ethnicity, Sexual Orientation, Spirituality, Trauma, Under Represented Populations, Veterans,

Programs/Services: MENTAL HEALTH SERVICES* (MHS), RESIDENTIAL, TARGETED CASE MANAGEMENT (TCM)

ADA Facility: Yes

Website: www.hillsides.org

Email:

List of Practitioners

Not Available

Service Area 3

OUTPATIENT

7337 7337 FIVE ACRES
760 W MOUNTAIN VIEW STREET
ALTADENA, CA 91001-4925

Phone: 626-798-6793

Hours of Operation: Monday-Friday 9-5pm and by appointment

Accepting Beneficiaries: Yes

Accessible By: By Referral Only

Provider: NGA

Supervisory District: 5

Age Group Served: All Ages

Languages: English, Spanish,

Cultures:

Programs/Services: CRISIS INTERVENTION, MEDICATION SUPPORT, MENTAL HEALTH SERVICES* (MHS), PSYCHOLOGICAL TESTING, RESIDENTIAL TREATMENT, TARGETED CASE MANAGEMENT (TCM), THERAPEUTIC BEHAVIORAL SERVICES (TBS)

ADA Facility: Yes

Website: www.5acres.org

Email:

List of Practitioners

Not Available

Service Area 3

OUTPATIENT

7341 7341 D VEAL FAM + YTH ALTADENA ELEM SCH
855 N ORANGE GROVE BL 207
PASADENA, CA 91103-3333

Phone: 626-296-8900

Hours of Operation: MON - FRI 9:00 AM - 5:00 PM

Accepting Beneficiaries: Yes

Accessible By: CONTACT PROVIDER

Provider: NGA

Supervisory District: 5

Age Group Served: All Ages

Languages: English,

Cultures: Gender Identity, Homeless Housing, Race Ethnicity, Sexual Orientation, Trauma, Under Represented Populations,

Programs/Services: CRISIS INTERVENTION, MEDICATION SUPPORT, MENTAL HEALTH SERVICES* (MHS), PSYCHOLOGICAL TESTING, TARGETED CASE MANAGEMENT (TCM)

ADA Facility: Yes

Website: www.dveal.org

Email: info@dveal.org

List of Practitioners

Not Available

Service Area 3

OUTPATIENT

**7353 7353 PACIFIC CLINICS ARROYO
1020 S ARROYO PARKWAY
PASADENA, CA 91105-3911**

Phone: 626-403-2794

Hours of Operation: MON - FRI 9:00 AM - 5:00 PM

Accepting Beneficiaries: No

Accessible By: CONTACT PROVIDER

Provider: NGA

Supervisory District: 1

Age Group Served: All Ages

Languages: Armenian, English, Spanish,

Cultures:

Programs/Services: COMMUNITY OUTREACH SERVICES, CRISIS INTERVENTION, FULL SERVICE PARTNERSHIP (FSP), MEDICATION SUPPORT, MENTAL HEALTH SERVICES* (MHS), PSYCHOLOGICAL TESTING, TARGETED CASE MANAGEMENT (TCM)

ADA Facility: Yes

Website: www.Pacificclinics.org

Email:

List of Practitioners

Not Available

Service Area 3

OUTPATIENT

7368 7368 ALMANSOR CLINICAL SERVICES
1317 HUNTINGTON DRIVE
SOUTH PASADENA, CA 91030-4511

Phone: 323-344-5538

Hours of Operation: MON - FRI 9:00 AM - 5:00 PM

Accepting Beneficiaries: Yes

Accessible By: BY REFERRAL ONLY

Provider: NGA

Supervisory District: 1

Age Group Served: All Ages

Languages: Armenian, Cantonese, English, Mandarin, Other Chinese, Russian, Spanish, Tagalog,

Cultures: Co-occurring Substance Use Disorders, Disabilities Special Needs, Forensic Legal, Gender Identity, Homeless Housing, Race Ethnicity, Sexual Orientation, Spirituality, Trauma, Under Represented Populations, Veterans,

Programs/Services: MENTAL HEALTH SERVICES* (MHS), SCHOOL BASED SERVICES

ADA Facility: Yes

Website: www.redesignlearning.org

Email:

List of Practitioners

Not Available

Service Area 3

OUTPATIENT

7374 7374 ROSEMARY CHILDREN'S SERVICES
36 S KINNELOA AVE
PASADENA, CA 91107-3853

Phone: 626-844-3033

Hours of Operation: SUN - SAT 9:00 AM - 8:00 PM

Accepting Beneficiaries: Yes

Accessible By: By Referral Only

Provider: NGA

Supervisory District: 5

Age Group Served: 0-20

Languages: English, Mandarin, Spanish,
Cultures:

Programs/Services: CRISIS INTERVENTION, MEDICATION SUPPORT, MENTAL HEALTH SERVICES* (MHS), THERAPEUTIC BEHAVIORAL SERVICES (TBS), PSYCHOLOGICAL TESTING, TARGETED CASE MANAGEMENT (TCM)

ADA Facility: No

Website: www.victor.org

Email:

List of Practitioners

Not Available

Service Area 3

OUTPATIENT

7380 7380 PACIFIC CLINICS-SIERRA FAMILY CENTER
1160 S GRAND AVENUE
GLENDORA, CA 91740-5000

Phone: (626) 335-5980

Hours of Operation: MON & FRI 8:00 AM -5:00 PM/ Wed-Thurs 8AM-7PM

Accepting Beneficiaries: No

Accessible By: Phone / Walk-Ins

Provider: NGA

Supervisory District: 1

Age Group Served: All Ages

Languages: English, Spanish,

Cultures:

Programs/Services: CRISIS INTERVENTION, MEDICATION SERVICES, MENTAL HEALTH SERVICES* (MHS), TARGETED CASE MANAGEMENT (TCM)

ADA Facility: Yes

Website: www.Pacificclinics.org

Email:

List of Practitioners

Not Available

Service Area 3

OUTPATIENT

**7401 7401 PACIFIC CLINICS ON LAKE OP
1460 N LAKE AVE
PASADENA, CA 91104-2300**

Phone: 626-296-7710

Hours of Operation: MON - FRI 9:00 AM - 5:00 PM

Accepting Beneficiaries: No

Accessible By: CONTACT PROVIDER

Provider: NGA

Supervisory District: 5

Age Group Served: All Ages

Languages: English,

Cultures:

Programs/Services: CRISIS INTERVENTION, MEDICATION SUPPORT, MENTAL HEALTH SERVICES* (MHS), PSYCHOLOGICAL TESTING, TARGETED CASE MANAGEMENT (TCM)

ADA Facility: No

Website: www.Pacificclinics.org

Email:

List of Practitioners

Not Available

Service Area 3

OUTPATIENT

7407 7407 FOOTHILL FAMILY SERVICES HUDSON
111 SOUTH HUDSON AVENUE
PASADENA, CA 91101-2606

Phone: 626-993-3000

Hours of Operation: MON - FRI 9:00 AM - 5:00 PM

Accepting Beneficiaries: Yes

Accessible By: Phone / Walk-Ins

Provider: NGA

Supervisory District: 5

Age Group Served: 0-20

Languages: Armenian, Cantonese, English, Mandarin, Spanish,
Cultures:

Programs/Services: CRISIS INTERVENTION, FIELD CAPABLE CLINICAL SERVICES (FCCS), FULL SERVICE PARTNERSHIP (FSP), MEDICATION SUPPORT, MENTAL HEALTH SERVICES* (MHS), PSYCHOLOGICAL TESTING, SPECIALIZED FOSTER CARE, TARGETED CASE MANAGEMENT (TCM)

ADA Facility: Yes

Website: www.foothillfamily.org

Email:

List of Practitioners

Not Available

Service Area 3

OUTPATIENT

7418 7418 PC CHILD + FAM SPECIALTY SVS
2550 E FOOTHILL BLVD 2ND FLOOR
PASADENA, CA 91107-3406

Phone: 626-441-4224

Hours of Operation: MON, TUE, FRI 9:00 AM - 5:00 PM; WED, THURS 8:00 A

Accepting Beneficiaries: No

Accessible By: CONTACT PROVIDER

Provider: NGA

Supervisory District: 5

Age Group Served: All Ages

Languages: Cantonese, English, Russian, Spanish,
Cultures:

Programs/Services: CRISIS INTERVENTION, MEDICATION SUPPORT, MENTAL
HEALTH SERVICES* (MHS), PSYCHOLOGICAL TESTING,
SUBSTANCE ABUSE, TARGETED CASE MANAGEMENT (TCM),
WELLNESS CENTER

ADA Facility: Yes

Website: www.Pacificclinics.org

Email:

List of Practitioners

Not Available

Service Area 3

OUTPATIENT

7430 7430 HERITAGE CLINIC COMM FOR SENIORS
447 N EL MOLINO AVENUE
PASADENA, CA 91101-1403

Phone: 626-577-8480

Hours of Operation: MON - FRI 8:30 AM - 5:00 PM

Accepting Beneficiaries: Yes

Accessible By: Phone / Walk-Ins

Provider: NGA

Supervisory District: 5

Age Group Served: 21+

Languages: English, Spanish,

Cultures: Disabilities Special Needs, Forensic Legal, Homeless Housing,
Race Ethnicity, Sexual Orientation, Spirituality, Under Represented
Populations, Veterans,

Programs/Services: CRISIS INTERVENTION, MEDICATION MANAGEMENT,
MENTAL HEALTH SERVICES* (MHS), TARGETED CASE
MANAGEMENT (TCM)

ADA Facility: Yes

Website: www.heritageclinic.org

Email: info@heritageclinic.org

List of Practitioners

Not Available

Service Area 3

OUTPATIENT

7436 7436 MCKINLEY CHILDREN'S CENTER
762 W CYPRESS STREET
SAN DIMAS, CA 91773-3505

Phone: 909-599-1227

Hours of Operation: MON - FRI 9:00 AM - 5:00 PM

Accepting Beneficiaries: Yes

Accessible By: CONTACT PROVIDER

Provider: NGA

Supervisory District: 1

Age Group Served: All Ages

Languages: English,

Cultures:

Programs/Services: CRISIS INTERVENTION, DAY REHABILITATION, MEDICATION SUPPORT, MENTAL HEALTH SERVICES* (MHS), PSYCHOLOGICAL TESTING, TARGETED CASE MANAGEMENT (TCM)

ADA Facility: No

Website: www.mckinleycc.org

Email:

List of Practitioners

Not Available

Service Area 3

OUTPATIENT

**7439 7439 PACIFIC CLINICS CHILDREN'S INTENSIVE COMMUNITY
SER
1126 N GRAND AVENUE SUITE B C D
COVINA, CA 91724-1551**

Phone: (626) 967-1667

Hours of Operation: MON - FRI 9:00 AM - 5:00 PM

Accepting Beneficiaries: Yes

Accessible By: Phone / Walk-Ins

Provider: NGA

Supervisory District: 1

Age Group Served: 0-20

Languages: English, Spanish,

Cultures:

Programs/Services: CRISIS INTERVENTION, MEDICATION SUPPORT, MENTAL
HEALTH SERVICES* (MHS), PSYCHOLOGICAL TESTING,
TARGETED CASE MANAGEMENT (TCM), THERAPEUTIC
BEHAVIORAL SERVICES (TBS)

ADA Facility: Yes

Website: www.Pacificclinics.org

Email:

List of Practitioners

Not Available

Service Area 3

OUTPATIENT

7440 7440 D'VEAL FAMILY + YOUTH SERVICES
2750 E WASHINGTON BLVD
PASADENA, CA 91107-1448

Phone: 626-794-3136

Hours of Operation: MON - FRI 9:00 AM - 5:00 PM

Accepting Beneficiaries: Yes

Accessible By: MON - FRI 9:00 AM - 5:00 PM

Provider: NGA

Supervisory District: 5

Age Group Served: All Ages

Languages: English,

Cultures: Gender Identity, Homeless Housing, Race Ethnicity, Sexual Orientation, Trauma, Under Represented Populations,

Programs/Services: CRISIS INTERVENTION, MEDICATION SUPPORT, MENTAL HEALTH SERVICES, PSYCHOLOGICAL TESTING, TARGETED CASE MANAGEMENT (TCM)

ADA Facility: Yes

Website: www.dveal.org

Email: info@dveal.org

List of Practitioners

Not Available

Service Area 3

OUTPATIENT

**7441 7441 PACIFIC CLINICS CHILD + FAMILY FIELD BASED
INTENSI
10428 LOWER AZUSA ROAD
EL MONTE, CA 91731-1208**

Phone: 626-652-0755

Hours of Operation: MON - FRI 9:00 AM - 5:00 PM

Accepting Beneficiaries: No

Accessible By: CONTACT PROVIDER

Provider: NGA

Supervisory District: 1

Age Group Served: All Ages

Languages: English, Spanish,

Cultures:

Programs/Services: CRISIS INTERVENTION, FIELD CAPABLE CLINICAL SERVICES (FCCS), FULL SERVICE PARTNERSHIP (FSP), MEDICATION SUPPORT, MENTAL HEALTH SERVICES* (MHS), PSYCHOLOGICAL TESTING, TARGETED CASE MANAGEMENT (TCM), THERAPEUTIC BEHAVIORAL SERVICES (TBS)

ADA Facility: Yes

Website: www.Pacificclinics.org

Email:

List of Practitioners

Not Available

Service Area 3

OUTPATIENT

7442 7442 SPECIALIZED FOSTER CARE PASADENA
532 E COLORADO BLVD 8TH FLOOR
PASADENA, CA 91101-2044

Phone: 626-229-3805

Hours of Operation: MON - FRI 9:00 AM - 5:00 PM

Accepting Beneficiaries: No

Accessible By: BY REFERRAL ONLY

Provider: DO

Supervisory District: 5

Age Group Served: All Ages

Languages: English,

Cultures:

Programs/Services: CRISIS INTERVENTION, MENTAL HEALTH SERVICES,
TARGETED CASE MANAGEMENT (TCM)

ADA Facility: No

Website: www.dmh.lacounty.gov

Email:

List of Practitioners

Not Available

Service Area 3

OUTPATIENT

7452 7452 ENKI YOUTH AND FAMILY SERVICES - EL MONTE
3208 ROSEMEAD BLVD
EL MONTE, CA 91731-2830

Phone: 626-227-7001

Hours of Operation: Mon 9am-6pm, Tues, Wed, Thurs, 10am-7pm, Friday 8am-5pm

Accepting Beneficiaries: Yes

Accessible By: CONTACT PROVIDER

Provider: NGA

Supervisory District: 1

Age Group Served: All Ages

Languages: English, Spanish,

Cultures:

Programs/Services: CRISIS INTERVENTION, MEDICATION SUPPORT, MENTAL HEALTH SERVICES* (MHS), PSYCHOLOGICAL TESTING, SPECIALIZED FOSTER CARE, TARGETED CASE MANAGEMENT, 0-5YRS (PCIT), TF-CBT, SS, PPP, MAP, CORS, IND. CBT

ADA Facility: Yes

Website: www.ehrs.com

Email:

List of Practitioners

Not Available

Service Area 3

OUTPATIENT

7453 7453 ETTIE LEE HOMES POMONA
160 E HOLT AVE
POMONA, CA 91767-5407

Phone: 626-960-4861

Hours of Operation: MON -FRI 8:00 AM - 5:00 PM

Accepting Beneficiaries: Yes

Accessible By: CONTACT PROVIDER

Provider: NGA

Supervisory District: 1

Age Group Served: 0-20

Languages: Arabic, English, Spanish,

Cultures: Trauma,

Programs/Services: CRISIS INTERVENTION, GROUP HOME, MEDICATION
SUPPORT, MENTAL HEALTH SERVICES* (MHS),
PSYCHOLOGICAL TESTING, TARGETED CASE MANAGEMENT
(TCM), THERAPEUTIC BEHAVIORAL SERVICES (TBS),
WRAPAROUND SERVICES, FIELD CAPABLE CLINICAL
SERVICES (FCCS), PREVENTION & EARLY INTER

ADA Facility: Yes

Website: www.ettielee.org

Email: EttieleePMA@gmail.com

List of Practitioners

Not Available

Service Area 3

OUTPATIENT

7461 7461 HOPE
220 S RAYMOND AVENUE SUITE 101
PASADENA, CA 91105-4109

Phone: 626-744-7054

Hours of Operation: MONDAY & TUESDAY 8:00 AM - 6:30 PM; WEDNESDAY & TH
Accepting Beneficiaries: Yes

Accessible By: FIELD RESPONSE ONLY

Provider: DO

Supervisory District: 1

Age Group Served: All Ages

Languages: English,

Cultures:

Programs/Services: CRISIS INTERVENTION, MEDICATION SUPPORT, MENTAL
HEALTH SERVICES* (MHS), PSYCHOLOGICAL TESTING,
TARGETED CASE MANAGEMENT (TCM)

ADA Facility: Yes

Website: www.dmh.lacounty.gov

Email:

List of Practitioners

Not Available

Service Area 3

OUTPATIENT

7463 7463 FOOTHILL FAMILY SERVICE EL MONTE
11429 VALLEY BLVD
EL MONTE, CA 91731-3229

Phone: 626-993-3000

Hours of Operation: MON - THURS 8:00 AM - 8:00 PM; FRI 9:00 AM - 5:00

Accepting Beneficiaries: Yes

Accessible By: Phone / Walk-Ins

Provider: NGA

Supervisory District: 1

Age Group Served: 0-20

Languages: Cantonese, English, Mandarin, Spanish,
Cultures:

Programs/Services: CRISIS INTERVENTION, FIELD CAPABLE CLINICAL SERVICES (FCCS), FULL SERVICE PARTNERSHIP (FSP), MEDICATION SUPPORT, MENTAL HEALTH SERVICES* (MHS), PSYCHOLOGICAL TESTING, SPECIALIZED FOSTER CARE, TARGETED CASE MANAGEMENT (TCM)

ADA Facility: Yes

Website: www.foothillfamily.org

Email:

List of Practitioners

Not Available

Service Area 3

OUTPATIENT

**7474 7474 MARYVALE
7600 E GRAVES AVE
ROSEMEAD, CA 91770-3414**

Phone: 626-280-6510

Hours of Operation: MON - FRI 9:00 AM - 5:00 PM

Accepting Beneficiaries: Yes

Accessible By: CONTACT PROVIDER

Provider: NGA

Supervisory District: 1

Age Group Served: 0-20

Languages: English, Spanish,

Cultures: Co-occurring Substance Use Disorders, Disabilities Special Needs, Forensic Legal, Gender Identity, Homeless Housing, Race Ethnicity, Sexual Orientation, Spirituality, Trauma, Under Represented Populations,

Programs/Services: CRISIS INTERVENTION, MEDICATION SUPPORT, MENTAL HEALTH SERVICES* (MHS), PSYCHOLOGICAL TESTING, TARGETED CASE MANAGEMENT (TCM)

ADA Facility: Yes

Website: <https://www.maryvale.org/>

Email: mvalencia@maryvale.org

List of Practitioners

Not Available

Service Area 3

OUTPATIENT

7504 7504 HOMES FOR LIFE FOUNDATION
26 S. ALMANSOR STREET
ALHAMBRA, CA 91801-3921

Phone: 310-337-7417

Hours of Operation: MON - FRI 9:00 AM - 5:00 PM

Accepting Beneficiaries: Yes

Accessible By: By Referral Only

Provider: NGA

Supervisory District: 1

Age Group Served: 0-20

Languages: English,

Cultures:

Programs/Services: CRISIS INTERVENTION, MENTAL HEALTH SERVICES* (MHS),
TARGETED CASE MANAGEMENT (TCM)

ADA Facility: Yes

Website: www.homesforlife.org

Email:

List of Practitioners

Not Available

Service Area 3

OUTPATIENT

7506 7506 HOMES FOR LIFE
506 E FAIRVIEW AVE .
SAN GABRIEL, CA 91766-9998

Phone: 626-309-0552

Hours of Operation: MON - FRI 9:00 AM - 5:00 PM

Accepting Beneficiaries: Yes

Accessible By: By Referral Only

Provider: NGA

Supervisory District: 1

Age Group Served: 0-20

Languages: English,

Cultures:

Programs/Services: CRISIS INTERVENTION, FIELD CAPABLE CLINICAL SERVICES (FCCS), MENTAL HEALTH SERVICES* (MHS), TARGETED CASE MANAGEMENT (TCM)

ADA Facility: Yes

Website: www.homesforlife.org

Email:

List of Practitioners

Not Available

Service Area 3

OUTPATIENT

7527 7527 SPIRITT FAMILY SERVICES
2000 TYLER AVE
SOUTH EL MONTE, CA 91733-3543

Phone: 626-442-1400

Hours of Operation: MON/WED/FRI 8 AM-5 PM TUES/THURS 8 AM-9PM SAT
8AM-4:30PM

Accepting Beneficiaries: Yes

Accessible By: Phone / Walk-Ins

Provider: NGA

Supervisory District: 1

Age Group Served: 0-20

Languages: English, Spanish,
Cultures:

Programs/Services: CRISIS INTERVENTION, MEDICATION SUPPORT, MENTAL
HEALTH SERVICES* (MHS), PSYCHOLOGICAL TESTING, FIELD
CAPABLE CLINICAL SERVICES (FCCS), RECOVERY
RESILIENCY RE-INTEGRATION (RRR), TARGETED CASE
MANAGEMENT (TCM)

ADA Facility: Yes

Website: www.spiritt.org

Email:

List of Practitioners

Not Available

Service Area 3

OUTPATIENT

7545 7545A CTR FOR INTEG FAM AND HLTH SVCS
560 - 568 S SAN JOSE AVENUE
COVINA, CA 91723-3144

Phone: 626-967-5103

Hours of Operation: MON - THURS 9:00 AM - 9:00 PM; FRI 9:00 AM - 5:00

Accepting Beneficiaries: Yes

Accessible By: CONTACT PROVIDER

Provider: NGA

Supervisory District: 1

Age Group Served: All Ages

Languages: Cantonese, English, Mandarin, Spanish, Tagalog,

Cultures: Co-occurring Substance Use Disorders, Trauma, Under
Represented Populations,

Programs/Services: CRISIS INTERVENTION, MEDICATION SUPPORT, MENTAL
HEALTH SERVICES* (MHS), PSYCHOLOGICAL TESTING,
FIELD CAPABLE CLINICAL SERVICES (FCCS), RECOVERY
RESILIENCY RE-INTEGRATION (RRR), TARGETED CASE
MANAGEMENT (TCM)

ADA Facility: Yes

Website: www.cifhs.org

Email:

List of Practitioners

Not Available

Service Area 3

OUTPATIENT

7545 7545B Fam Ctr Holland Middle School
560 - 568 S SAN JOSE AVENUE
COVINA, CA 91723-3144

Phone: 626-967-5103

Hours of Operation: MON - FRI 9:00 AM - 8:30 PM

Accepting Beneficiaries: Yes

Accessible By: CONTACT PROVIDER

Provider: NGA

Supervisory District: 1

Age Group Served: 0-20

Languages: English, Spanish,

Cultures: Trauma, Under Represented Populations,

Programs/Services: CRISIS INTERVENTION, MEDICATION SUPPORT, MENTAL HEALTH SERVICES* (MHS), PSYCHOLOGICAL TESTING, FIELD CAPABLE CLINICAL SERVICES (FCCS), RECOVERY RESILIENCY RE-INTEGRATION (RRR), TARGETED CASE MANAGEMENT (TCM)

ADA Facility: Yes

Website: www.cifhs.org

Email:

List of Practitioners

Not Available

Service Area 3

OUTPATIENT

7545 7545F Fam Ctr Jones Jr High School
560 - 568 S SAN JOSE AVENUE
COVINA, CA 91723-3144

Phone: 626-967-5103

Hours of Operation: MON - THURS 9:00 AM - 9:00 PM; FRI 9:00 AM - 5:00

Accepting Beneficiaries: Yes

Accessible By: CONTACT PROVIDER

Provider: NGA

Supervisory District: 1

Age Group Served: 0-20

Languages: English, Spanish,

Cultures: Under Represented Populations,

Programs/Services: CRISIS INTERVENTION, MEDICATION SUPPORT, MENTAL HEALTH SERVICES* (MHS), PSYCHOLOGICAL TESTING, FIELD CAPABLE CLINICAL SERVICES (FCCS), RECOVERY RESILIENCY RE-INTEGRATION (RRR), TARGETED CASE MANAGEMENT (TCM)

ADA Facility: Yes

Website: www.cifhs.org

Email:

List of Practitioners

Not Available

Service Area 3

OUTPATIENT

7545 7545P Fam Ctr Olive Middle School
560 - 568 S SAN JOSE AVENUE
COVINA, CA 91723-3144

Phone: 626-967-5103

Hours of Operation: MON - FRI 9:00 AM - 8:30 PM

Accepting Beneficiaries: Yes

Accessible By: CONTACT PROVIDER

Provider: NGA

Supervisory District: 1

Age Group Served: 0-20

Languages: English, Spanish,

Cultures: Under Represented Populations,

Programs/Services: CRISIS INTERVENTION, MEDICATION SUPPORT, MENTAL HEALTH SERVICES* (MHS), PSYCHOLOGICAL TESTING, FIELD CAPABLE CLINICAL SERVICES (FCCS), RECOVERY RESILIENCY RE-INTEGRATION (RRR), TARGETED CASE MANAGEMENT (TCM)

ADA Facility: Yes

Website: www.cifhs.org

Email:

List of Practitioners

Not Available

Service Area 3

OUTPATIENT

7545 7545Y Fam Ctr Sierra Vista Jr High Sch
560 - 568 S SAN JOSE AVENUE
COVINA, CA 91723-3144

Phone: 626-967-5103

Hours of Operation: MON - THURS 9:00 AM - 9:00 PM; FRI 9:00 AM - 5:00

Accepting Beneficiaries: Yes

Accessible By: CONTACT PROVIDER

Provider: NGA

Supervisory District: 1

Age Group Served: 0-20

Languages: English, Spanish,

Cultures: Under Represented Populations,

Programs/Services: CRISIS INTERVENTION, MEDICATION SUPPORT, MENTAL HEALTH SERVICES* (MHS), PSYCHOLOGICAL TESTING, FIELD CAPABLE CLINICAL SERVICES (FCCS), RECOVERY RESILIENCY RE-INTEGRATION (RRR), TARGETED CASE MANAGEMENT (TCM)

ADA Facility: Yes

Website: www.cifhs.org

Email:

List of Practitioners

Not Available

Service Area 3

OUTPATIENT

**7552 7552 TRINITY EL MONTE
11057 BASYE STREET
EL MONTE, CA 91731-1655**

Phone: 626-444-0539

Hours of Operation: MON - FRI 9:00 AM - 5:00 PM

Accepting Beneficiaries: No

Accessible By: CONTACT PROVIDER

Provider: NGA

Supervisory District: 1

Age Group Served: All Ages

Languages: English,

Cultures:

Programs/Services: COMMUNITY OUTREACH SERVICES (PROMOTION),
MEDICATION SUPPORT, MENTAL HEALTH SERVICES* (MHS),
PSYCHOLOGICAL TESTING, TARGETED CASE MANAGEMENT
(TCM), THERAPEUTIC BEHAVIORAL SERVICES (TBS)

ADA Facility: No

Website: Trinity Youth Services

Email: jadams@trinityys.org

List of Practitioners

Not Available

Service Area 3

OUTPATIENT

7561 7561 PACIFIC CLINICS BONITA FAMILY SERVICES CENTER
790 E BONITA AVENUE
POMONA, CA 91767-1906

Phone: (909) 625-7207

Hours of Operation: MON & TUES 9:00AM -6:30PM/ WED, THURS, FRI 9:00-5:00PM

Accepting Beneficiaries: Yes

Accessible By: Phone / Walk-Ins

Provider: NGA

Supervisory District: 1

Age Group Served: 0-20

Languages: English, Spanish,

Cultures:

Programs/Services: CRISIS INTERVENTION, MEDICATION SUPPORT, MENTAL HEALTH SERVICES* (MHS), PSYCHOLOGICAL TESTING, TARGETED CASE MANAGEMENT (TCM)

ADA Facility: Yes

Website: www.Pacificclinics.org

Email:

List of Practitioners

Not Available

Service Area 3

OUTPATIENT

7563 7563 SAN GABRIEL CHILDREN'S CENTER OUT PATIENT
4740 N GRAND AVENUE
COVINA, CA 91724-2005

Phone: 626-859-2089

Hours of Operation: MON - FRI 9:00 AM - 5:00 PM

Accepting Beneficiaries: No

Accessible By: CONTACT PROVIDER

Provider: NGA

Supervisory District: 1

Age Group Served: All Ages

Languages: English, Spanish,

Cultures:

Programs/Services: CRISIS INTERVENTION, DAY TREATMENT, MEDICATION SUPPORT, WRAPAROUND SERVICES, MENTAL HEALTH SERVICES* (MHS), SPECIALIZED FOSTER CARE, TARGETED CASE MANAGEMENT (TCM), THERAPEUTIC BEHAVIORAL SERVICES (TBS), INTENSIVE FIELD CAPABLE CLINICAL SERVICES (IFCCS), RECOVERY

ADA Facility: Yes

Website: www.sangabrielchild.com

Email: ericthomas@sangabrielchild.com

List of Practitioners

Not Available

Service Area 3

OUTPATIENT

7566 7566 DAVID + MARGARET HOME INC
1350 THIRD STREET
LA VERNE, CA 91750-5201

Phone: 909-596-5921

Hours of Operation: 8:30AM-5:30PM

Accepting Beneficiaries: Yes

Accessible By: CONTACT PROVIDER

Provider: NGA

Supervisory District: 1

Age Group Served: All Ages

Languages: English, Spanish,

Cultures:

Programs/Services: MENTAL HEALTH SERVICES* (MHS), TARGETED CASE
MANAGEMENT, TBS, MEDICATION SUPPORT, CRISIS
INTERVENTION, PSYCHOLOGICAL TESTING

ADA Facility: No

Website: www.DavidandMargaret.org

Email:

List of Practitioners

Not Available

Service Area 3

OUTPATIENT

7567 7567 PUSD MENTAL HEALTH SERVICES
2046 NORTH ALLEN AVE
ALTADENA, CA 91001-3424

Phone: 626-396-5920

Hours of Operation: MON - FRI 8:00 AM - 5:00 PM

Accepting Beneficiaries: Yes

Accessible By: CONTACT PROVIDER

Provider: NGA

Supervisory District: 5

Age Group Served: All Ages

Languages: English, Spanish,

Cultures: Gender Identity, Race Ethnicity, Sexual Orientation, Trauma, Under
Represented Populations,

Programs/Services: CRISIS INTERVENTION, MEDICATION SUPPORT, MENTAL
HEALTH SERVICES* (MHS), TARGETED CASE MANAGEMENT
(TCM)

ADA Facility: Yes

Website: <https://www.pusd.us/domain/1327>

Email:

List of Practitioners

Not Available

Service Area 3

OUTPATIENT

7601 7601 HATHAWAY SYCAMORES CHILD AND FAMILY SERVICES
2933 EL NIDO DRIVE
ALTADENA, CA 91001-4529

Phone: 626 395 7100

Hours of Operation: MON - FRI 9:00 AM - 5:00 PM

Accepting Beneficiaries: Yes

Accessible By: Phone / Walk-Ins

Provider: NGA

Supervisory District: 5

Age Group Served: All Ages

Languages: English, Spanish,

Cultures: Trauma,

Programs/Services: CRISIS INTERVENTION, MEDICATION SUPPORT, MENTAL HEALTH SERVICES* (MHS), PSYCHOLOGICAL TESTING, TARGETED CASE MANAGEMENT (TCM), THERAPEUTIC BEHAVIORAL SERVICES (TBS) (TBS)

ADA Facility: Yes

Website: www.hathaway-sycamores.org

Email:

List of Practitioners

Not Available

Service Area 3

OUTPATIENT

7602 7602 HATHAWAY SYCAMORES CHILD AND FAMILY SERVICES

**851 NORTH OAKLAND AVENUE
PASADENA, CA 91104-4343**

Phone: 626 395 7100

Hours of Operation: MON - FRI 9:00 AM - 5:00 PM

Accepting Beneficiaries: Yes

Accessible By: By Referral Only

Provider: NGA

Supervisory District: 5

Age Group Served: All Ages

Languages: English, Spanish,

Cultures: Co-occurring Substance Use Disorders, Disabilities Special Needs, Forensic Legal, Gender Identity, Homeless Housing, Race Ethnicity, Sexual Orientation, Spirituality, Trauma, Under Represented Populations,

Programs/Services: CRISIS INTERVENTION, FULL SERVICE PARTNERSHIP (FSP), MEDICATION SUPPORT, MENTAL HEALTH SERVICES* (MHS), PSYCHOLOGICAL TESTING, SPECIALIZED FOSTER CARE, TARGETED CASE MANAGEMENT (TCM)

ADA Facility: Yes

Website: www.hathaway-sycamores.org

Email:

List of Practitioners

Not Available

Service Area 3

OUTPATIENT

7618 7618 RIVER COMMUNITY COVINA
508 S 2ND AVENUE
COVINA, CA 91723-3012

Phone: 626 947-4164

Hours of Operation: MON - FRI 8:00 AM - 5:00 PM

Accepting Beneficiaries: Yes

Accessible By: Phone / Walk-Ins

Provider: NGA

Supervisory District: 1

Age Group Served: All Ages

Languages: English, Spanish,

Cultures: Co-occurring Substance Use Disorders, Forensic Legal, Homeless Housing,

Programs/Services: MENTAL HEALTH SERVICES* (MHS) CRISIS INTERVENTION, TARGETED CASE MANAGEMENT, MEDICATION SUPPORT

ADA Facility: Yes

Website: <http://www.socialmodelrecovery.org/>

Email:

List of Practitioners

Not Available

Service Area 3

OUTPATIENT

**7642 7642 PASADENA COUNCIL ON ALCOHOLISM AND DRUG
DEPENDENCE**

**1245E WALNUT #101,103,107,109,115,117,
PASADENA, CA 91106-1878**

Phone: 626 773-4364

Hours of Operation: MON - FRI 8:00 AM - 5:00 PM

Accepting Beneficiaries: Yes

Accessible By: Phone / Walk-Ins

Provider: NGA

Supervisory District: 5

Age Group Served: All Ages

Languages: English, Spanish,

Cultures: Co-occurring Substance Use Disorders, Forensic Legal, Homeless
Housing,

Programs/Services: MENTAL HEALTH SERVICES* (MHS), TARGETED CASE
MANAGEMENT

ADA Facility: Yes

Website: <http://www.socialmodelrecovery.org/>

Email:

List of Practitioners

Not Available

Service Area 3

OUTPATIENT

7659 7659 CRITTENTON SERVICES FOR CHILDREN AND FAMILIES
1460 E HOLT AVE
POMONA, CA 91767-5852

Phone: 714-680-9000

Hours of Operation: MON -FRI 8:00 AM- 5:00 PM

Accepting Beneficiaries: Yes

Accessible By: CONTACT PROVIDER

Provider: NGA

Supervisory District: 1

Age Group Served: All Ages

Languages: English, Spanish,

Cultures:

Programs/Services: MENTAL HEALTH SERVICES* (MHS), COLLATERAL,
TARGETED CASE MANAGEMENT (TCM), MEDICATION
SUPPORT SERVICES, CRISIS INTERVENTION

ADA Facility: Yes

Website: crittentonsocal.org

Email:

List of Practitioners

Not Available

Service Area 3

OUTPATIENT

7669 7669 HATHAWAY SYCAMORES CHILD AND FAMILY SERVICES

**1411 N GRAND AVENUE SUITE100
COVINA, CA 91724-1001**

Phone: 626 395 7100

Hours of Operation: MON - FRI 9:00 AM - 5:00 PM

Accepting Beneficiaries: Yes

Accessible By: Phone / Walk-Ins

Provider: NGA

Supervisory District: 1

Age Group Served: All Ages

Languages: English, Spanish,

Cultures: Co-occurring Substance Use Disorders, Trauma, Under
Represented Populations,

Programs/Services: WRAPAROUND, THERAPEUTIC BEHAVIORAL SERVICES
(TBS), CRISIS INTERVENTION, FULL SERVICE PARTNERSHIP
(FSP), MEDICATION SUPPORT, MENTAL HEALTH SERVICES*
(MHS), PSYCHOLOGICAL TESTING, SPECIALIZED FOSTER
CARE, TARGETED CASE MANAGEMENT (TCM)

ADA Facility: Yes

Website: www.hathaway-sycamores.org

Email:

List of Practitioners

Not Available

Service Area 3

OUTPATIENT

7705 7705 SA3 FSP PROGRAM
1359 N GRAND AVE .
COVINA, CA 91724-1016

Phone: 626-430-2999

Hours of Operation: MON - FRI 8:00 AM - 5:00 PM

Accepting Beneficiaries: Yes

Accessible By: MON - FRI 8:00 AM - 5:00 PM

Provider: DO

Supervisory District: 1

Age Group Served: All Ages

Languages: English,

Cultures: Co-occurring Substance Use Disorders, Forensic Legal, Homeless Housing, Race Ethnicity, Trauma, Under Represented Populations,

Programs/Services: MEDICATION SUPPORT, MENTAL HEALTH SERVICES* (MHS), TARGETED CASE MANAGEMENT (TCM)

ADA Facility: No

Website: www.dmh.lacounty.gov

Email:

List of Practitioners

Not Available

Service Area 3

OUTPATIENT

7708 7708 ALMANSOR CLINICAL SERVICES
205 PASADENA AVENUE
SOUTH PASADENA, CA 91030-2919

Phone: 323-344-5538

Hours of Operation: MON - FRI 8:00 AM - 6:00 PM

Accepting Beneficiaries: No

Accessible By: CONTACT PROVIDER

Provider: NGA

Supervisory District: 1

Age Group Served: All Ages

Languages: Armenian, Cantonese, English, Mandarin, Other Chinese, Russian, Spanish, Tagalog,

Cultures:

Programs/Services: CRISIS INTERVENTION, MEDICATION SUPPORT, MENTAL HEALTH SERVICES* (MHS), SPECIALIZED FOSTER CARE, TARGETED CASE MANAGEMENT (TCM), WELLNESS CENTER

ADA Facility: Yes

Website: www.redesignlearning.org

Email:

List of Practitioners

Not Available

Service Area 3

OUTPATIENT

7710 7710 RIVER COMMUNITY WELLNESS CENTER
510 S SECOND AVENUE SUITE 7
COVINA, CA 91723-3017

Phone: 626 332-7788

Hours of Operation: MON - FRI 8:00 AM - 5:00 PM

Accepting Beneficiaries: Yes

Accessible By: Phone / Walk-Ins

Provider: NGA

Supervisory District: 1

Age Group Served: All Ages

Languages: English, Spanish,

Cultures: Co-occurring Substance Use Disorders, Forensic Legal, Homeless Housing,

Programs/Services: CO-OCCURRING DISORDERS, MEDICATION SUPPORT, CRISIS INTERVENTION, TARGETED CASE MANAGEMENT, MENTAL HEALTH SERVICES* (MHS)

ADA Facility: Yes

Website: <http://www.socialmodelrecovery.org/>

Email:

List of Practitioners

Not Available

Service Area 3

OUTPATIENT

7712 7712 ETTIE LEE-COVINA
754 E ARROW HIGHWAY SUITE F
COVINA, CA 91722-2107

Phone: 626-960-4861

Hours of Operation: MON - FRI 8:00 AM - 5:00 PM

Accepting Beneficiaries: Yes

Accessible By: CONTACT PROVIDER

Provider: NGA

Supervisory District: 1

Age Group Served: 0-20

Languages: English, Spanish,

Cultures: Trauma,

Programs/Services: MENTAL HEALTH SERVICES* (MHS), MEDICATION SUPPORT, SPECIALIZED FOSTER CARE, TARGETED CASE MANAGEMENT (TCM), THERAPEUTIC BEHAVIORAL SERVICES (TBS), WRAPAROUND SERVICES, FIELD CLINICAL CAPABLE SERVICES (FCCS), PREVENTION AND EARLY INTERVENTION (PEI), COMMUNITY OUTR

ADA Facility: Yes

Website: www.ettielee.org

Email: EttieleePMA@gmail.com

List of Practitioners

Not Available

Service Area 3

OUTPATIENT

7748 7748 PC HOPE CENTER
13001 RAMONA BLVD SUITE H AND I
IRWINDALE, CA 91706-3752

Phone: 626-296-9812

Hours of Operation: MON -FRI 8:00 AM- 5:00 PM

Accepting Beneficiaries: No

Accessible By: CONTACT PROVIDER

Provider: NGA

Supervisory District: 1

Age Group Served: All Ages

Languages: English, Spanish,

Cultures:

Programs/Services: MENTAL HEALTH SERVICES* (MHS), MEDICATION SUPPORT, CRISIS INTERVENTION, TARGETED CASE MANAGEMENT (TCM)

ADA Facility: Yes

Website: www.Pacificclinics.org

Email:

List of Practitioners

Not Available

Service Area 3

OUTPATIENT

7753 7753 SPECIALIZED FOSTER CARE GLENDORA
725 S GRAND AVENUE
GLENDORA, CA 91740-4141

Phone: 626-691-1804

Hours of Operation: MON - FRI 8:00 AM - 5:00 PM

Accepting Beneficiaries: Yes

Accessible By: BY REFERRAL ONLY

Provider: DO

Supervisory District: 1

Age Group Served: All Ages

Languages: English,

Cultures:

Programs/Services: CRISIS INTERVENTION, PSYCHOLOGICAL TESTING,
SUPPORT SERVICES, MENTAL HEALTH SERVICES* (MHS),
TARGETED CASE MANAGEMENT (TCM), COMMUNITY
OUTREACH SERVICES

ADA Facility: No

Website: www.dmh.lacounty.gov

Email:

List of Practitioners

Not Available

Service Area 3

OUTPATIENT

7755 7755 FOOTHILL FAMILY SERVICE - DUARTE
1801 HUNTINGTON DR SUITE 200
DUARTE, CA 91010-2687

Phone: 626-993-3000

Hours of Operation: MON -THURS 8:00 AM- 8:00 PM, FRI 8:00 AM-5:00 PM

Accepting Beneficiaries: Yes

Accessible By: Phone / Walk-Ins

Provider: NGA

Supervisory District: 1

Age Group Served: 0-20

Languages: English, Spanish,

Cultures:

Programs/Services: CRISIS INTERVENTION, FIELD CAPABLE CLINICAL SERVICES (FCCS), FULL SERVICE PARTNERSHIP (FSP), MEDICATION SUPPORT, MENTAL HEALTH SERVICES* (MHS), PSYCHOLOGICAL TESTING, SPECIALIZED FOSTER CARE, TARGETED CASE MANAGEMENT (TCM)

ADA Facility: Yes

Website: www.foothillfamily.org

Email:

List of Practitioners

Not Available

Service Area 3

OUTPATIENT

7775 7775 D'VEAL F+Y WRAP
1972 N FAIR OAKS AVENUE
PASADENA, CA 91103-1623

Phone: 626-296-8900

Hours of Operation: M,T,W,F 8:00AM-5PM, THURS 9:00AM-6:00PM

Accepting Beneficiaries: Yes

Accessible By: CONTACT PROVIDER

Provider: NGA

Supervisory District: 5

Age Group Served: All Ages

Languages: English,

Cultures: Gender Identity, Homeless Housing, Race Ethnicity, Sexual Orientation, Trauma, Under Represented Populations,

Programs/Services: CRISIS INTERVENTION, PSYCHOLOGICAL TESTING, MENTAL HEALTH SERVICES* (MHS), TARGETED CASE MANAGEMENT (TCM), TBS

ADA Facility: No

Website: www.dveal.org

Email: info@dveal.org

List of Practitioners

Not Available

Service Area 3

OUTPATIENT

**7777 7777 EAST SAN GABRIEL VALLEY MHC
1359 N GRAND AVE .
COVINA, CA 91724-1016**

Phone: 626-430-2900

Hours of Operation: Monday and Wednesdays: 8 a.m. - 7 p.m.; Tuesdays, Thursdays and Fridays: 8 a.m. to 5 p.m.

Accepting Beneficiaries: Yes

Accessible By: MON & WED 8-7; TUE, TH & FRI 8-5

Provider: DO

Supervisory District: 1

Age Group Served: All Ages

Languages: Cantonese, English, Mandarin, Other Chinese, Spanish, Vietnamese

Cultures: Co-occurring Substance Use Disorders, Disabilities Special Needs, Forensic Legal, Gender Identity, Homeless Housing, Race Ethnicity, Sexual Orientation, Spirituality, Trauma, Under Represented Populations,

Programs/Services: CRISIS INTERVENTION, PSYCHOLOGICAL TESTING, MENTAL HEALTH SERVICES* (MHS), TARGETED CASE MANAGEMENT (TCM), CALWORKS

ADA Facility: Yes

Website: www.dmh.lacounty.gov

Email:

List of Practitioners

Not Available

Service Area 3

OUTPATIENT

7787 7787 VIP CMHC, INC.
4024 DURFEE AVE
EL MONTE, CA 91732-2510

Phone: 323-221-4134

Hours of Operation: MON -FRI 8:00 AM- 5:00 PM

Accepting Beneficiaries: Yes

Accessible By: CONTACT PROVIDER

Provider: NGA

Supervisory District: 1

Age Group Served: All Ages

Languages: English, Spanish,

Cultures:

Programs/Services: CRISIS INTERVENTION, PSYCHOLOGICAL TESTING, MENTAL HEALTH SERVICES* (MHS), TARGETED CASE MANAGEMENT (TCM),

ADA Facility: Yes

Website: www.violenceinterventionprogram.org

Email: contact@vip-cmhc.org

List of Practitioners

Not Available

Service Area 3

OUTPATIENT

7798 7798A TRI CITY MENTAL HEALTH AUTHORITY
1900 ROYALTY DRIVE STE 170,180,280,290
POMONA, CA 91767-3032

Phone: 909-766-7340

Hours of Operation: MON -FRI 8:00 AM- 5:00 PM

Accepting Beneficiaries: Yes

Accessible By: Phone / Walk-Ins

Provider: NGA

Supervisory District: 1

Age Group Served: All Ages

Languages: English, Spanish,

Cultures:

Programs/Services: MENTAL HEALTH SERVICES* (MHS), MEDICATION SUPPORT,
TARGETED CASE MANAGEMENT, CRISIS INTERVENTION

ADA Facility: Yes

Website: <http://tricitymhs.org/>

Email:

List of Practitioners

Not Available

Service Area 3

OUTPATIENT

7801 7801 DMH DHS COLLABORATION EL MONTE CHC
10953 RAMONA BLVD
EL MONTE, CA 91731-2629

Phone: 213-639-6394

Hours of Operation: MON -FRI 8:00 AM- 5:00 PM

Accepting Beneficiaries: Yes

Accessible By: By Referral Only

Provider: DO

Supervisory District: 1

Age Group Served: All Ages

Languages: English, Spanish,

Cultures: Race Ethnicity,

Programs/Services: MENTAL HEALTH SERVICES* (MHS, CRISIS INTERVENTION,
TARGETED CASE MANAGEMENT

ADA Facility: Yes

Website: www.dmh.lacounty.gov

Email:

List of Practitioners

Not Available

Service Area 3

OUTPATIENT

7809 7809 SPECIALIZED FOSTER CARE EL MONTE
4024 DURFEE AVE
EL MONTE, CA 91732-2510

Phone: 626-459-8800

Hours of Operation: MON - FRI 8:00 AM - 5:00 PM

Accepting Beneficiaries: Yes

Accessible By: BY REFERRAL ONLY

Provider: DO

Supervisory District: 1

Age Group Served: All Ages

Languages: English,

Cultures:

Programs/Services: CRISIS INTERVENTION, PSYCHOLOGICAL TESTING,
SUPPORT SERVICES, MENTAL HEALTH SERVICES* (MHS),
TARGETED CASE MANAGEMENT (TCM), COMMUNITY
OUTREACH SERVICES

ADA Facility: No

Website: www.dmh.lacounty.gov

Email:

List of Practitioners

Not Available

Service Area 3

OUTPATIENT

7810 7810 SPECIALIZED FOSTER CARE COVINA
1373 CENTER CT DR
COVINA, CA 91724-3663

Phone: 626-859-2336

Hours of Operation: MON -FRI 8:00 AM- 5:00 PM

Accepting Beneficiaries: Yes

Accessible By: BY REFERRAL ONLY

Provider: DO

Supervisory District: 1

Age Group Served: All Ages

Languages: English,

Cultures:

Programs/Services: CRISIS INTERVENTION, , SUPPORT SERVICES, MENTAL HEALTH SERVICES* (MHS), TARGETED CASE MANAGEMENT (TCM), COMMUNITY OUTREACH SERVICES

ADA Facility: No

Website: www.dmh.lacounty.gov

Email:

List of Practitioners

Not Available

Service Area 3

OUTPATIENT

7811 7811 SPECIALIZED FOSTER CARE POMONA
801 CORPORATE CENTER DRIVE
POMONA, CA 91768-2628

Phone: 909-802-1459

Hours of Operation: MON -FRI 8:00 AM- 5:00 PM

Accepting Beneficiaries: Yes

Accessible By: BY REFERRAL ONLY

Provider: DO

Supervisory District: 1

Age Group Served: All Ages

Languages: English,

Cultures:

Programs/Services: CRISIS INTERVENTION, PSYCHOLOGICAL TESTING,
SUPPORT SERVICES, MENTAL HEALTH SERVICES* (MHS),
TARGETED CASE MANAGEMENT (TCM), COMMUNITY
OUTREACH SERVICES

ADA Facility: No

Website: www.dmh.lacounty.gov

Email:

List of Practitioners

Not Available

Service Area 3

OUTPATIENT

7815 7815 MARYVALE
2502 E HUNTINGTON DR Not applicable
DUARTE, CA 91010-2221

Phone: 626-263-9133

Hours of Operation: MON -FRI 8:00 AM- 5:00 PM

Accepting Beneficiaries: Yes

Accessible By: CONTACT PROVIDER

Provider: NGA

Supervisory District: 1

Age Group Served: All Ages

Languages: English, Spanish,

Cultures: Co-occurring Substance Use Disorders, Disabilities Special Needs, Gender Identity, Homeless Housing, Race Ethnicity, Sexual Orientation, Spirituality, Trauma, Under Represented Populations, Veterans,

Programs/Services: MENTAL HEALTH SERVICES* (MHS), TARGETED CASE MANAGEMENT, CRISIS INTERVENTION

ADA Facility: Yes

Website: <https://www.maryvale.org/>

Email: mvalencia@maryvale.org

List of Practitioners

Not Available

Service Area 3

OUTPATIENT

7816 7816 ROSEMARY CHILDREN'S SERVICES
3244 E GREEN ST
PASADENA, CA 91107-3836

Phone: 626-844-3033

Hours of Operation: SUN - SAT 9:00 AM - 8:00 PM

Accepting Beneficiaries: Yes

Accessible By: By Referral Only

Provider: NGA

Supervisory District: 5

Age Group Served: 0-20

Languages: English, Spanish,

Cultures:

Programs/Services: CRISIS INTERVENTION, MEDICATION SUPPORT, MENTAL HEALTH SERVICES* (MHS), THERAPEUTIC BEHAVIORAL SERVICES (TBS), PSYCHOLOGICAL TESTING, TARGETED CASE MANAGEMENT (TCM)

ADA Facility: No

Website: www.victor.org

Email:

List of Practitioners

Not Available

Service Area 3

OUTPATIENT

7819 7819 ALMA FAMILY SERVICES
4024 DURFEE AVENUE
EL MONTE, CA 91732-2510

Phone: 626-279-2530

Hours of Operation: MON -FRI 8:00 AM- 5:00 PM

Accepting Beneficiaries: Yes

Accessible By: By Referral Only

Provider: NGA

Supervisory District: 1

Age Group Served: All Ages

Languages: English, Spanish,

Cultures: Race Ethnicity, Trauma,

Programs/Services: CALWORKS, MENTAL HEALTH SERVICES, CRISIS INTERVENTION, MEDICATION SUPPORT, TARGETED CASE MANAGEMENT (TCM), MENTAL HEALTH SERVICES (MHS), OUTPATIENT AND FIELD BASED, LATINO INTEGRATED SERVICE MANAGEMENT PROGRAM (RRR-ISM), PREVENTION AND EARLY INTERVENTION

ADA Facility: Yes

Website: <http://www.almafamilyservices.org/>

Email:

List of Practitioners

Not Available

Service Area 3

OUTPATIENT

7858 7858 PC CENTRO FAMILIAR
3569 LEXINGTON AVE
EL MONTE, CA 91731-2607

Phone: (626) 453-3399

Hours of Operation: MON - FRI 9:00 AM - 5:00 PM

Accepting Beneficiaries: Yes

Accessible By: Phone / Walk-Ins

Provider:

Supervisory District: 1

Age Group Served: 0-20

Languages: English, Spanish,

Cultures:

Programs/Services: CRISIS INTERVENTION, MEDICATION SUPPORT, MENTAL HEALTH SERVICES* (MHS), TARGETED CASE MANAGEMENT (TCM)

ADA Facility: Yes

Website: www.Pacificclinics.org

Email:

List of Practitioners

Not Available

Service Area 3

OUTPATIENT

7862 7862 LEROY HAYNES CENTER
1025 SENTINEL DRIVE SUITE 200 AND 206
LA VERNE, CA 91750-3280

Phone: 909-833-2986

Hours of Operation: Call for Hours

Accepting Beneficiaries: No

Accessible By: BY REFERRAL

Provider: NGA

Supervisory District: 1

Age Group Served: All Ages

Languages: English,

Cultures:

Programs/Services: MEDICATION SUPPORT, MENTAL HEALTH SERVICES*
(MHS), CRISIS INTERVENTION, TARGETED CASE
MANAGEMENT

ADA Facility: No

Website: www.leroyhaynes.org

Email:

List of Practitioners

Not Available

Service Area 3

OUTPATIENT

7872 7872 D'VEAL FAMILY AND YTH NVIEW INTER SCH
1401 HIGHLAND AVE
DUARTE, CA 91010-2523

Phone: 626-296-8900

Hours of Operation: MON - FRI 9:00 AM - 5:00 PM

Accepting Beneficiaries: Yes

Accessible By: CONTACT PROVIDER

Provider: NGA

Supervisory District: 1

Age Group Served: All Ages

Languages: English,

Cultures: Gender Identity, Homeless Housing, Race Ethnicity, Sexual Orientation, Trauma, Under Represented Populations,

Programs/Services: CRISIS INTERVENTION, MEDICATION SUPPORT, MENTAL HEALTH SERVICES* (MHS), TARGETED CASE MANAGEMENT (TCM), TBS

ADA Facility: Yes

Website: www.dveal.org

Email: info@dveal.org

List of Practitioners

Not Available

Service Area 3

OUTPATIENT

7873 7873 D'VEAL FAMILY AND YTH ANDRES ELEM SCH
1433 CRESTFIELD DRIVE
DUARTE, CA 91010-2206

Phone: 626-296-8900

Hours of Operation: MON - FRI 9:00 AM - 5:00 PM

Accepting Beneficiaries: Yes

Accessible By: CONTACT PROVIDER

Provider: NGA

Supervisory District: 1

Age Group Served: All Ages

Languages: English,

Cultures: Gender Identity, Homeless Housing, Race Ethnicity, Sexual Orientation, Trauma, Under Represented Populations,

Programs/Services: CRISIS INTERVENTION, MEDICATION SUPPORT, MENTAL HEALTH SERVICES* (MHS), TARGETED CASE MANAGEMENT (TCM), TBS

ADA Facility: Yes

Website: www.dveal.org

Email: info@dveal.org

List of Practitioners

Not Available

Service Area 3

OUTPATIENT

**7874 7874 D'VEAL FAM AND YTH MT OLIVE ALTER SCH
1400 MT OLIVE DRIVE
DUARTE, CA 91010-2675**

Phone: 626-296-8900

Hours of Operation: MON - FRI 9:00 AM - 5:00 PM

Accepting Beneficiaries: Yes

Accessible By: CONTACT PROVIDER

Provider: NGA

Supervisory District: 1

Age Group Served: All Ages

Languages: English,

Cultures: Gender Identity, Homeless Housing, Race Ethnicity, Sexual Orientation, Trauma, Under Represented Populations,

Programs/Services: CRISIS INTERVENTION, MEDICATION SUPPORT, MENTAL HEALTH SERVICES* (MHS), TARGETED CASE MANAGEMENT (TCM), TBS

ADA Facility: Yes

Website: www.dveal.org

Email: info@dveal.org

List of Practitioners

Not Available

Service Area 3

OUTPATIENT

7878 7878 D'VEAL FAM + YTH ALTADENA ELEM SCH
743 E CALAVERAS ST
ALTADENA, CA 91001-2332

Phone: 626-296-8900

Hours of Operation: MON -FRI 8:00 AM- 5:00 PM

Accepting Beneficiaries: Yes

Accessible By: CONTACT PROVIDER

Provider: NGA

Supervisory District: 5

Age Group Served: All Ages

Languages: English,

Cultures: Gender Identity, Homeless Housing, Race Ethnicity, Sexual Orientation, Trauma, Under Represented Populations,

Programs/Services: CRISIS INTERVENTION, MEDICATION SUPPORT, MENTAL HEALTH SERVICES* (MHS), TARGETED CASE MANAGEMENT (TCM), TBS

ADA Facility: Yes

Website: www.dveal.org

Email: info@dveal.org

List of Practitioners

Not Available

Service Area 3

OUTPATIENT

7880 7880 D'VEAL FAM + YTH JOHN MUIR HIGH SCH
1905 LINCOLN AVE
PASADENA, CA 91103-1315

Phone: 626-296-8900

Hours of Operation: MON -FRI 8:00 AM- 5:00 PM

Accepting Beneficiaries: Yes

Accessible By: CONTACT PROVIDER

Provider: NGA

Supervisory District: 5

Age Group Served: All Ages

Languages: English,

Cultures: Gender Identity, Homeless Housing, Race Ethnicity, Sexual Orientation, Trauma, Under Represented Populations,

Programs/Services: CRISIS INTERVENTION, MEDICATION SUPPORT, MENTAL HEALTH SERVICES* (MHS), TARGETED CASE MANAGEMENT (TCM), TBS

ADA Facility: Yes

Website: www.dveal.org

Email: info@dveal.org

List of Practitioners

Not Available

Service Area 3

OUTPATIENT

**7883 7883 HILLSIDES FRC ESGV
13001 RAMONA BLVD SUITE A
IRWINDALE, CA 91706-3752**

Phone: 323-254-2274

Hours of Operation: MON -FRI 8:00 AM- 5:00 PM

Accepting Beneficiaries: Yes

Accessible By: Phone / Walk-Ins

Provider: NGA

Supervisory District: 1

Age Group Served: All Ages

Languages: English, Spanish,

Cultures: Co-occurring Substance Use Disorders, Disabilities Special Needs, Forensic Legal, Gender Identity, Homeless Housing, Race Ethnicity, Sexual Orientation, Spirituality, Trauma, Under Represented Populations, Veterans,

Programs/Services: CRISIS INTERVENTION, COMMUNITY OUTREACH SERVICES, MEDICATION SUPPORT, MENTAL HEALTH SERVICES* (MHS), TARGETED CASE MANAGEMENT (TCM), TBS

ADA Facility: No

Website: www.hillsides.org

Email:

List of Practitioners

Not Available

Service Area 3

OUTPATIENT

7895 7895 DAVID AND MARGARET HOME INC
1264 N SAN DIMAS CANYON ROAD
SAN DIMAS, CA 91773-1223

Phone: 909-480-8900

Hours of Operation: MON -FRI 8:00 AM- 5:00 PM

Accepting Beneficiaries: No

Accessible By: CONTACT PROVIDER

Provider: NGA

Supervisory District: 1

Age Group Served: 0-20

Languages: English,

Cultures:

Programs/Services: MENTAL HEALTH SERVICES* (MHS, CRISIS INTERVENTION,
TARGETED CASE MANAGEMENT

ADA Facility: No

Website: www.DavidandMargaret.org

Email:

List of Practitioners

Not Available

Service Area 3

OUTPATIENT

7925 7925 HILLSIDES FRC POMONA
435 W MISSION BLVD
POMONA, CA 91766-1601

Phone: 323-254-2274

Hours of Operation: MON -FRI 8:00 AM- 5:00 PM

Accepting Beneficiaries: Yes

Accessible By: Phone / Walk-Ins

Provider: NGA

Supervisory District: 1

Age Group Served: All Ages

Languages: English, Spanish,

Cultures: Co-occurring Substance Use Disorders, Disabilities Special Needs, Forensic Legal, Gender Identity, Homeless Housing, Race Ethnicity, Sexual Orientation, Spirituality, Trauma, Under Represented Populations, Veterans,

Programs/Services: COMMUNITY OUTREACH, TARGETED CASE MANAGEMENT, MENTAL HEALTH SERVICES* (MHS)

ADA Facility: No

Website: www.hillsides.org

Email:

List of Practitioners

Not Available

Service Area 3

OUTPATIENT

7943 7943 CA MENTOR
675 CLIFFSIDE DRIVE
SAN DIMAS, CA 91773-2957

Phone: 909-599-1928

Hours of Operation: MON-FRI 9:00 AM-5:00 PM

Accepting Beneficiaries: Yes

Accessible By: CONTACT PROVIDER

Provider: NGA

Supervisory District: 1

Age Group Served: 0-20

Languages: English, Spanish,

Cultures:

Programs/Services: CRISIS INTERVENTION, MEDICATION SUPPORT, MENTAL HEALTH SERVICES* (MHS), TARGETED CASE MANAGEMENT

ADA Facility: Yes

Website: www.ca-mentor.com

Email: sabrina.ullah@thementornetwork.com

List of Practitioners

Not Available

Service Area 3

OUTPATIENT

7948 7948 ROSEMARY CHILDREN'S SERVICES
677 CLIFFSIDE DRIVE
SAN DIMAS, CA 91773-2957

Phone: 626-844-3033

Hours of Operation: MON-FRI 8:30 AM - 5:00 PM

Accepting Beneficiaries: No

Accessible By: By Referral Only

Provider: NGA

Supervisorial District: 1

Age Group Served: 0-20

Languages: English, Spanish,

Cultures:

Programs/Services: TARGETED CASE MANAGEMENT, COLLATERAL, MENTAL
HEALTH SERVICES, MEDICATION SUPPORT, CRISIS
INTERVENTION

ADA Facility: No

Website: www.victor.org

Email:

List of Practitioners

Not Available

Service Area 3

OUTPATIENT

7959 7959 PACIFIC CLINICS MULTICULTURAL FAMILY CENTER
18623 GALE AVE
CITY OF INDUSTRY, CA 91748-1342

Phone: 626-839-0300

Hours of Operation: MON - FRI 8:00 AM - 5:00 PM

Accepting Beneficiaries: Yes

Accessible By: CONTACT PROVIDER

Provider: NGA

Supervisory District: 1

Age Group Served: All Ages

Languages: English, Mandarin, Spanish,

Cultures:

Programs/Services: MENTAL HEALTH SERVICES* (MHS), CRISIS INTERVENTION,
TARGETED CASE MANAGEMENT, MEDICATION SUPPORT,
COMMUNITY OUTREACH SERVICES

ADA Facility: Yes

Website: www.Pacificclinics.org

Email:

List of Practitioners

Not Available

Service Area 3

OUTPATIENT

7976 7976 OMNI CENTER
3430 COGSWELL ROAD BUILDING 4 AND 5
EL MONTE , CA 91732-2785

Phone: 626 453-3406

Hours of Operation: MON-FRI 8:30 AM - 5:00 PM

Accepting Beneficiaries: Yes

Accessible By: CONTACT PROVIDER

Provider: NGA

Supervisory District: 1

Age Group Served: All Ages

Languages: English, Spanish,

Cultures: Co-occurring Substance Use Disorders, Forensic Legal, Homeless Housing,

Programs/Services: MEDICATION SUPPORT, MENTAL HEALTH SERVICES*(MHS),
CRISIS INTERVENTION, TARGETED CASE MANAGEMENT

ADA Facility: Yes

Website: <http://www.socialmodelrecovery.org/>

Email:

List of Practitioners

Not Available

Service Area 3

OUTPATIENT

7977 7977 ENKI YOUTH + FAMILY SERVICES - WEST COVINA
1215 W WEST COVINA PARKWAY
WEST COVINA, CA 91790-2946

Phone: 626-974-0770

Hours of Operation: Mon 9am-6pm, Tues, Wed, Thurs, 8am-5pm, Friday 8am-5pm

Accepting Beneficiaries: Yes

Accessible By: CONTACT PROVIDER

Provider: NGA

Supervisory District: 1

Age Group Served: All Ages

Languages: English, Mandarin, Spanish,

Cultures:

Programs/Services: CRISIS INTERVENTION, MEDICATION SUPPORT, MENTAL HEALTH SERVICES* (MHS), PSYCHOLOGICAL TESTING, SPECIALIZED FOSTER CARE, TARGETED CASE MANAGEMENT, 0-5YRS, TF-CBT, SS, PPP, CORS, IND. CBT

ADA Facility: Yes

Website: www.ehrs.com

Email:

List of Practitioners

Not Available

Service Area 3

OUTPATIENT

7990 7990 PROTOTYPES OBHS POMONA
831 EAST ARROW HIGHWAY
POMONA, CA 91767-2535

Phone: 9009-398-4383

Hours of Operation: MON - FRI 8:00 AM - 5:00 PM

Accepting Beneficiaries: Yes

Accessible By: Phone / Walk-Ins

Provider: NGA

Supervisory District: 1

Age Group Served: All Ages

Languages: English, Mandarin, Spanish,

Cultures: Co-occurring Substance Use Disorders, Forensic Legal, Race
Ethnicity, Trauma, Under Represented Populations, Veterans,

Programs/Services: CALWORKS, GROW, HOMELESS FAMILIES SOLUTION
SERVICES (HFSS), CRISIS INTERVENTION, FIELD CAPABLE
CLINICAL SERVICES (FCCS), FULL SERVICE PARTNERSHIP
(FSP) TAY, MEDICATION SUPPORT, MENTAL HEALTH
SERVICES* (MHS), PREVENTION & EARLY INTERVENTION
(PEI), COMMUNITY REINTEG

ADA Facility: Yes

Website: www.prototypes.org

Email:

List of Practitioners

Not Available

Service Area 3

OUTPATIENT

7992 7992 PROTOTYPES OBHS PASADENA
2650 E FOOTHILL BLVD
PASADENA, CA 91107-3439

Phone: 626-577-2261

Hours of Operation: MON - FRI 8:00 AM - 5:00 PM

Accepting Beneficiaries: Yes

Accessible By: CONTACT PROVIDER

Provider: NGA

Supervisory District: 5

Age Group Served: All Ages

Languages: English, Spanish,

Cultures: Co-occurring Substance Use Disorders,

Programs/Services: CALWORKS, CRISIS INTERVENTION, FIELD CAPABLE
CLINICAL SERVICES (FCCS), FULL SERVICE PARTNERSHIP
(FSP) ADULT, MULTI ASSESSMENT TEAMS (MAT),
MEDICATION SUPPORT, MENTAL HEALTH SERVICES* (MHS),
PREVENTION & EARLY INTERVENTION (PEI), SPECIALIZED
FOSTER CARE, TARGETED

ADA Facility: Yes

Website: www.prototypes.org

Email:

List of Practitioners

Not Available

Service Area 3

OUTPATIENT

7994 7994 PROTOTYPES OBHS WELLNESS CENTER
40 N ALTADENA DRIVE SUITE 1B
PASADENA, CA 91107-3386

Phone: 626-577-2261

Hours of Operation: M-F 8:00AM-5:00PM

Accepting Beneficiaries: No

Accessible By: CONTACT PROVIDER

Provider: NGA

Supervisory District: 5

Age Group Served: All Ages

Languages: English,

Cultures:

Programs/Services: CRISIS INTERVENTION, TARGETED CASE MANAGEMENT,
MENTAL HEALTH SERVICES* (MHS)

ADA Facility: No

Website: www.prototypes.org

Email:

List of Practitioners

Not Available

Service Area 3

OUTPATIENT, 24 HOUR RESIDENTIAL

7245 7245W Homes For Life Foundation Wilson
8939 S SEPULVEDA BLVD
LOS ANGELES, CA 90045-3631

Phone: 310-337-7417

Hours of Operation: MON - FRI 8:00 AM - 5:00 PM

Accepting Beneficiaries: Yes

Accessible By: By Referral Only

Provider: NGA

Supervisory District: 5

Age Group Served: All Ages

Languages: English,

Cultures:

Programs/Services: MENTAL HEALTH SERVICES*(MHS), TARGETED CASE
MANAGEMENT, IMD STEPDOWN

ADA Facility: Yes

Website: www.homesforlife.org

Email:

List of Practitioners

Not Available

Service Area 3

OUTPATIENT, 24 HOUR RESIDENTIAL

7245 7245Z Homes For Life Foundation Madison
8939 S SEPULVEDA BLVD
LOS ANGELES, CA 90045-3631

Phone: 310-337-7417

Hours of Operation: MON - FRI 8:00 AM - 5:00 PM

Accepting Beneficiaries: Yes

Accessible By: By Referral Only

Provider: NGA

Supervisory District: 5

Age Group Served: All Ages

Languages: English,

Cultures:

Programs/Services: MENTAL HEALTH SERVICES*(MHS), TARGETED CASE
MANAGEMENT, IMD STEPDOWN

ADA Facility: Yes

Website: www.homesforlife.org

Email:

List of Practitioners

Not Available

Service Area 3

OUTPATIENT/ PHF

7950 7950 STAR VIEW BEHAVIORAL HEALTH INC.
9040 TELSTAR AVENUE SUITE 101
EL MONTE, CA 91731-2838

Phone: 310-868-5379

Hours of Operation: MON-FRI 8:30 AM - 5:00 PM

Accepting Beneficiaries: Yes

Accessible By: BY REFERRAL ONLY

Provider: NGA

Supervisory District: 1

Age Group Served: All Ages

Languages: English, Spanish,

Cultures:

Programs/Services: PSYCHOLOGICAL TESTING, MENTAL HEALTH SERVICES*(MHS), CRISIS INTERVENTION, TARGETED CASE MANAGEMENT, SUPPORT SERVICES, TBS, PSYCHIATRIC HEALTH FACILITY

ADA Facility: Yes

Website: www.starsinc.com

Email:

List of Practitioners

Not Available

Attestation

Provider Number	Provider Name	Attestation Received - YES	Attestation Received - NO
0054	HARBOR VIEW CENTER		NO
0055	LANDMARK MEDICAL CENTER		NO
0057	LA PAZ		NO
0058	LAUREL PARK		NO
0059	MEADOWBROOK MANOR		NO
0061	OLIVE VISTA		NO
0063	SAN GABRIEL VALLEY CONVALESCENT HOSPITAL		NO
0067	VIEW HEIGHTS CONVALESCENT HOSPITAL		NO
0080	COMMUNITY CARE CENTER		NO
1904	ANTELOPE VALLEY MHC		NO
1905	SANTA CLARITA VALLEY MENTAL HEALTH CENTER		NO
1906	EDMUND D EDELMAN MENTAL HEALTH CENTER-ADULT		NO
1907	GATEWAYS HOMELESS SERVICES		NO
1908	WEST CENTRAL FAMILY MENTAL HEALTH SERVICES		NO
1909	HOLLYWOOD MENTAL HEALTH CENTER		NO
190A	PENNY LANE CENTERS, SATELLITE VII		NO
190B	PENNY LANE CENTERS, SATELLITE IV		NO
190C	EXODUS IMHT		NO
190D	PENNY LANE CENTERS, SATELLITE IX		NO
190E	PENNY LANE CENTERS, SATELLITE X		NO
190F	PENNY LANE CENTERS, SATELLITE III		NO
190G	PENNY LANE CENTERS, SATELLITE VI		NO
190H	PENNY LANE CENTERS, SATELLITE III		NO
1910	PASADENA UNIFIED SCHOOL DISTRICT		NO
1912	BELL GARDENS YOUTH AND FAMILY SERVICES		NO

Nov 12, 2020

159

For first time visit and/or new referrals, please contact provider. To obtain Mental Health Information and Services confidentially, please call the 24/7 ACCESS Center Hotline at 1-800-854-7771. (For TDD-TTY, call 1-866-735-2922.) To schedule interpreter services for the hearing impaired (American Sign Language-ASL), please call the 24/7 ACCESS Center Hotline. *MHS refers to individual/group therapy and collateral services. Provider: DMH = Directly-Operated Facility; NGA = Non-Governmental Agency (Contractor); FFS = Fee-for-Service.

Attestation

Provider Number	Provider Name	Attestation Received - YES	Attestation Received - NO
1913	HEOPLINE YOUTH COUNSELING, INC		NO
1914	NORTHEAST MENTAL HEALTH CENTER		NO
1916	TARZANA TREATMENT CENTER		NO
1917	ARCADIA MENTAL HEALTH CENTER		NO
1918	THE HELP GROUP, CHILD AND FAMILYCENTER		NO
1921	WHITTIER WMET		NO
1926	LONG BEACH CHILD & ADOLESCENT CLINIC		NO
1927	LONG BEACH MENTAL HEALTH SERVICES (MHS) ADULT CLINIC		NO
1928	SAN PEDRO MENTAL HEALTH CLINIC (MHC)		NO
1930	RIO HONDO COMMUNITY MENTAL HEALTH CENTER	YES	
1932	WSGVMET		NO
1933	OPTIMIST EAGLE ROCK		NO
1934	OPTIMIST CARSON		NO
1935	SOUTH BAY MENTAL HEALTH SERVICES (MHS)		NO
1936	OPTIMIST MISSION HILLS		NO
1937	PACIFIC LODGE YOUTH SERVICES		NO
1938	COMPTON MENTAL HEALTH CENTER		NO
1941	PACIFIC LODGE CAMPUS		NO
1942	SGMET		NO
1943	ROSEMARY CHILDREN'S SERVICES		NO
1944	LAWMET		NO
1945	IMET		NO
1946	OPTIMIST CAMPUS		NO
1947	HRMBMET		NO
1948	OPTIMIST VAN NUYS		NO

Nov 12, 2020

160

For first time visit and/or new referrals, please contact provider. To obtain Mental Health Information and Services confidentially, please call the 24/7 ACCESS Center Hotline at 1-800-854-7771. (For TDD-TTY, call 1-866-735-2922.) To schedule interpreter services for the hearing impaired (American Sign Language-ASL), please call the 24/7 ACCESS Center Hotline. *MHS refers to individual/group therapy and collateral services. Provider: DMH = Directly-Operated Facility; NGA = Non-Governmental Agency (Contractor); FFS = Fee-for-Service.

Attestation

Provider Number	Provider Name	Attestation Received - YES	Attestation Received - NO
1949	OPTIMIST SYLMAR JH		NO
1953	LAC-OLIVE VIEW/UCLA MEDICAL CENTER		NO
1953	LAC-OLIVE VIEW-EMERGENCY ROOM		NO
1954	HILLVIEW MH AUXILIARY OUTPATIENT, SITE 2		NO
1955	HILLSIDES BOYS SATELLITE HOME		NO
1956	LAC + USC MEDICAL CENTER		NO
1956	LAC + USC MEDICAL CENTER - CRISIS STABILIZATION		NO
1956	LAC + USC MEDICAL CENTER - PSYCH OUTPATIENT		NO
1957	CENTRAL JUVENILE HALL		NO
1958	DOROTHY KIRBY		NO
1959	HILLSIDES GIRLS SATELLITE HOME		NO
1960	HILLSIDES STRTP		NO
1961	STAR VIEW ADOLESCENT CENTER, PSYCHIATRIC HEALTH FACILITY		NO
1962	LAC HARBOR UCLA MEDICAL CENTER, CRISIS STABLIZATION		NO
1962	LAC HARBOR-UCLA MEDICAL CENTER		NO
1964	BIENVENIDOS CHILDREN'S CENTER		NO
1965	PENNY LANE CENTER, MAIN FACILITY		NO
1967	BIENVENIDOS MONTEBELLO		NO
1969	SOUTH BAY CHILDREN'S HEALTH CENTER		NO
1972	THE WHOLE CHILD		NO
1973	DIDI HIRSCH-SEPULVEDA		NO
1974	PACIFIC CLINICS PASADENA FAMILY SERVICES		NO
1975	CHILD & FAMILY GUIDANCE CENTER-NORTHRIDGE		NO
1977	COMMUNITY FAMILY GUIDANCE CENTER		NO

Nov 12, 2020

161

For first time visit and/or new referrals, please contact provider. To obtain Mental Health Information and Services confidentially, please call the 24/7 ACCESS Center Hotline at 1-800-854-7771. (For TDD-TTY, call 1-866-735-2922.) To schedule interpreter services for the hearing impaired (American Sign Language-ASL), please call the 24/7 ACCESS Center Hotline. *MHS refers to individual/group therapy and collateral services. Provider: DMH = Directly-Operated Facility; NGA = Non-Governmental Agency (Contractor); FFS = Fee-for-Service.

Attestation

Provider Number	Provider Name	Attestation Received - YES	Attestation Received - NO
1979	PACIFIC CLINICS-E FOOTHILL GUIDANCE		NO
1982	GATEWAYS CMHC		NO
1990	BIENVENIDOS CHILDRENS CENTER		NO
1991	BIENVENIDOS VILLAGE		NO
1992	PENNY LANE CENTER, SATELLITE V		NO
1996	PENNY LANE CENTER, SATELLITE I		NO
1997	VISTA DEL MAR CHILD AND FAMILY STRTP		NO
1998	PENNY LANE CENTER, SATELLITE VIII		NO
6757	GATEWAYS COMMUNITY MHC MDO		NO
6758	HILLVIEW MHC ADULT RESIDENTIAL		NO
6773	PROVIDENCE - ST. JOHN'S CHILD & FAMILY DEVELOPMENT CENTER		NO
6792	PROVIDENCE SAINT JOHN'S HEALTH CENTER		NO
6821	BARRY J. NIDORF, JUVENILE HALL, MH UNIT		NO
6821	OPTIMIST AT BARRY J. NIDORF (SATELLITE)		NO
6840	SAN FERNANDO MENTAL HEALTH CENTER		NO
6841	WEST VALLEY MENTAL HEALTH WELLNESS CENTER		NO
6853	SAN FERNANDO VALLEY CMHC-YOUTH & FAMILY CTR.		NO
6857	ROYBAL FAMILY MENTAL HEALTH CENTER		NO
6859	HARBOR-UCLA MEDICAL CENTER		NO
6863	PENNY LANE CENTERS		NO
6864	AUGUSTUS F. HAWKINS MENTAL HEALTH CENTER		NO
6864	AUGUSTUS F. HAWKINS MENTAL HEALTH CENTER, FIRST 5 PCIT (SATELLITE)		NO
6864	AUGUSTUS F. HAWKINS MENTAL HEALTH CENTER, HAVEN CLINIC (SATELLITE)		NO

Nov 12, 2020

162

For first time visit and/or new referrals, please contact provider. To obtain Mental Health Information and Services confidentially, please call the 24/7 ACCESS Center Hotline at 1-800-854-7771. (For TDD-TTY, call 1-866-735-2922.) To schedule interpreter services for the hearing impaired (American Sign Language-ASL), please call the 24/7 ACCESS Center Hotline. *MHS refers to individual/group therapy and collateral services. Provider: DMH = Directly-Operated Facility; NGA = Non-Governmental Agency (Contractor); FFS = Fee-for-Service.

Attestation

Provider Number	Provider Name	Attestation Received - YES	Attestation Received - NO
6864	AUGUSTUS F. HAWKINS MENTAL HEALTH CENTER, WOMAN'S CLINIC (SATELLITE)		NO
6870	LOS ANGELES CHILD GUIDANCE CLINIC	YES	
7012	OFFICE OF THE PUBLIC GUARDIAN		NO
7018	MENTAL HEALTH AMERICA		NO
7019	ALMA FAMILY SERVICES		NO
7019	ALMA FAMILY SERVICES-LONG BEACH		NO
7020	GARDENA SOCIAL ACTIVITY CENTER		NO
7031	WATTS LABOR COMMUNITY ACTION (SATELLITE)		NO
7046	DIDI HIRSCH EXCELSIOR HOUSE		NO
7050	EL CENTRO DE AMISTAD		NO
7057	DOWNTOWN MENTAL HEALTH CENTER		NO
7061	AIDS PROJECT LOS ANGELES		NO
7062	WESTSIDE CENTER FOR INDEPENDENT LIVING (WCIL) INC.		NO
7064	COASTAL ASIAN PACIFIC ISLANDER FAMILY MENTAL HEALTH CENTER		NO
7065	MENTAL HEALTH AMERICA OF LA HOMELESS ASSISTANCE		NO
7068	HILLVIEW MHC, INC.		NO
7072	MENTAL HEALTH COURT LINKAGE PROGRAM		NO
7075	BRIDGES INC. - HACIENDA RETIRADA INC.		NO
7080	KEDREN ACUTE PSYCHIATRIC HOSPITAL & CMHC		NO
7092	HEALTH VIEW BEHAVIORAL SERVICES CENTER		NO
7095	THE HELP GROUP CHILD & FAMILY CENTER		NO
7099	STEP UP ON SECOND STREET-ADULT FCCS-TAY FSP		NO
7100	SAN FERNANDO VALLEY CMHC-CENTER FOR FAMILY		NO

Nov 12, 2020

163

For first time visit and/or new referrals, please contact provider. To obtain Mental Health Information and Services confidentially, please call the 24/7 ACCESS Center Hotline at 1-800-854-7771. (For TDD-TTY, call 1-866-735-2922.) To schedule interpreter services for the hearing impaired (American Sign Language-ASL), please call the 24/7 ACCESS Center Hotline. *MHS refers to individual/group therapy and collateral services. Provider: DMH = Directly-Operated Facility; NGA = Non-Governmental Agency (Contractor); FFS = Fee-for-Service.

Attestation

Provider Number	Provider Name	Attestation Received - YES	Attestation Received - NO
	LIVING		
7101	PACIFIC CLINICS - ASIAN PACIFIC FAMILY CENTER		NO
7103	KOREATOWN YOUTH & COMMUNITY CENTER INC.		NO
7104	AMANEKER COMMUNITY COUNSELING SERVICE (SATELLITE)		NO
7104	AMANEKER COMMUNITY COUNSELING SERVICES		NO
7106	THE LOS ANGELES GAY & LESBIAN CENTER		NO
7110	DIDI HIRSCH JUMP STREET		NO
7111	1736 FAMILY CRISIS CENTER		NO
7112	SPECIAL SERVICES FOR GROUPS (SSG)		NO
7114	ST. JOSEPH'S CENTER-VENICE/HAMPTON		NO
7121	FOR THE CHILD		NO
7124	SPECIAL SERVICES FOR GROUPS (SSG)		NO
7131	SOCIAL MODEL RECOVERY SYSTEMS - THE RIVER COMMUNITY		NO
7134	LAMP COMMUNITY FRANK RICE ACCESS CENTER		NO
7147	FILIPINO-AMERICAN SERVICE GROUP, INC.		NO
7166	LOS PADRINOS JUVENILE HALL MENTAL HEALTH UNIT		NO
7169	PROVIDENCE SAINT JOHN'S HEALTH CENTER		NO
7173	ENKI LPV MENTAL HEALTH CENTER-LA PUENTE		NO
7174	SAN FERNANDO VALLEY CMHC-CORNERSTONE		NO
7177	SAN FERNANDO VALLEY CMHC-MACDONALD CAREY CENTER		NO
7178	OCEAN PARK-OPCC-DAY BREAK SHELTER, SAFE HAVEN		NO
7184	THE INSTITUTE FOR THE REDESIGN OF LEARNING - ALMANSOR		NO

Nov 12, 2020

164

For first time visit and/or new referrals, please contact provider. To obtain Mental Health Information and Services confidentially, please call the 24/7 ACCESS Center Hotline at 1-800-854-7771. (For TDD-TTY, call 1-866-735-2922.) To schedule interpreter services for the hearing impaired (American Sign Language-ASL), please call the 24/7 ACCESS Center Hotline. *MHS refers to individual/group therapy and collateral services. Provider: DMH = Directly-Operated Facility; NGA = Non-Governmental Agency (Contractor); FFS = Fee-for-Service.

Attestation

Provider Number	Provider Name	Attestation Received - YES	Attestation Received - NO
7186	SSG - ASIAN PACIFIC COUNSELING & TREATMENT CENTER		NO
7187	SSG-METRO COUNSELING CENTER		NO
7191	EDMUND D EDELMAN MENTAL HEALTH CENTER-CHILD AND FAMILY		NO
7194	PACIFIC CLINICS-EL CAMINO MENTAL HEALTH CENTER		NO
7195	CAMP AFFLERBAUGH		NO
7195	CAMP GLEN ROCKEY		NO
7195	CAMP JOSEPH PAIGE		NO
7195	CHALLENGER MENTAL HEALTH UNIT		NO
7196	VISTA DEL MAR CHILD & FAMILY SERVICE		NO
7203	THE SABAN FREE CLINIC		NO
7204	MHA ANTELOPE VALLEY		NO
7207	LONG BEACH ASIAN PACIFIC MENTAL HEALTH PROGRAM		NO
7209	DIDI HIRSCH-INGLEWOOD		NO
7211	LAUSD 97TH STREET SCHOOL MENTAL HEALTH CENTER		NO
7212	MHA VILLAGE INTEGRATED SERVICE		NO
7213	RESIDENTIAL AND BRIDGING SERVICES		NO
7216	SYSTEMWIDE MENTAL ASSESSMENT RESPONSE TEAM (SMART)		NO
7217	METMOBILE CRISIS FIELD UNIT		NO
7218	BARBOUR & FLOYD MEDICAL ASSOCIATES		NO
7220	SOUTH BAY CHILDREN'S HEALTH CENTER		NO
7221	AVIVA FAMILY AND CHILDREN'S SERVICES		NO
7224	PACIFIC CLINICS-ACT-WEST COVINA		NO

Nov 12, 2020

165

For first time visit and/or new referrals, please contact provider. To obtain Mental Health Information and Services confidentially, please call the 24/7 ACCESS Center Hotline at 1-800-854-7771. (For TDD-TTY, call 1-866-735-2922.) To schedule interpreter services for the hearing impaired (American Sign Language-ASL), please call the 24/7 ACCESS Center Hotline. *MHS refers to individual/group therapy and collateral services. Provider: DMH = Directly-Operated Facility; NGA = Non-Governmental Agency (Contractor); FFS = Fee-for-Service.

Attestation

Provider Number	Provider Name	Attestation Received - YES	Attestation Received - NO
7225	CHILD AND FAM GUIDANCE CENTER-PALMDALE		NO
7227	PACIFIC CLINICS-EAST-YOUTH DAY TREATMENT		NO
7229	ALCOTT CENTER FOR MENTAL HEALTH SERVICES	YES	
7231	HILLSIDES FAMILY RESOURCE CENTER		NO
7235	SAN FERNANDO VALLEY CMHC-VICTORY CLUB HOUSE		NO
7241	COUNTYWIDE OLDER ADULT GENESIS FCCS		NO
7242	SCHARP - OASIS HOUSE WELLNESS CENTER		NO
7243	BRIDGES INC.		NO
7244	BRIDGES INC.		NO
7245	HOMES FOR LIFE FOUNDATION		NO
7246	COMMUNITY FAMILY GUIDANCE CENTER, FAMILY AND YOUTH STARS PROGRAM		NO
7247	CHILD & FAMILY GUIDANCE CENTER-BALBOA		NO
7248	EXODUS RECOVERY INC.		NO
7249	THE GUIDANCE CENTER-SAN PEDRO		NO
7250	TELECARE LOS ANGELES ACT OLDER ADULTS		NO
7251	PACIFIC CLINICS		NO
7252	SAN FERNANDO VALLEY CMHC-ADULT FCCS		NO
7253	ENKI EAST LOS ANGELES MHS-COMMERCE		NO
7254	ENKI EAST LOS ANGELES MHS-BELL GARDENS		NO
7255	ENKI - PICO UNION		NO
7257	STAR VIEW ADOLESCENT CENTER		NO
7259	LONG BEACH MET		NO
7262	TELECARE LA-AB34 OUTPATIENT		NO
7264	SHIELDS FOR FAMILIES		NO
7265	LOS ANGELES CHILD GUIDANCE CLINIC - FAMILIES IN	YES	

Nov 12, 2020

166

For first time visit and/or new referrals, please contact provider. To obtain Mental Health Information and Services confidentially, please call the 24/7 ACCESS Center Hotline at 1-800-854-7771. (For TDD-TTY, call 1-866-735-2922.) To schedule interpreter services for the hearing impaired (American Sign Language-ASL), please call the 24/7 ACCESS Center Hotline. *MHS refers to individual/group therapy and collateral services. Provider: DMH = Directly-Operated Facility; NGA = Non-Governmental Agency (Contractor); FFS = Fee-for-Service.

Attestation

Provider Number	Provider Name	Attestation Received - YES	Attestation Received - NO
	TOUCH		
7268	AVIVA FAMILY AND CHILDREN'S SERVICES		NO
7269	OLIVE CREST TREATMENT CENTERS-WRAPAROUND		NO
7270	HARBOR VIEW COMMUNITY SERVICES CENTER		NO
7272	PACIFIC ASIAN COUNSELING SERVICES		NO
7275	CHILDREN'S INSTITUTE INC.		NO
7276	LOS ANGELES CHILD GUIDANCE CLINIC	YES	
7277	LA CASA PSYCHIATRIC HEALTH FACILITY		NO
7278	HATHAWAY SYCAMORES CHILD AND FAMILY SERVICES		NO
7279	THE GUIDANCE CENTER, COMPTON		NO
7283	TOPANGA WEST GUEST HOME		NO
7284	PACIFIC CLINICS-ACT-EL MONTE		NO
7286	FIVE ACRES		NO
7299	COLLEGE HOSPITAL		NO
7300	CHILDREN'S BUREAU OF SOUTHERN CALIFORNIA		NO
7301	CHILD BUREAU OF SOUTHERN CA-PALMDALE		NO
7302	CHILDREN'S BUREAU OF S CALIFORNIA-SG VALLEY		NO
7303	SCHARP COMPTON		NO
7312	INST. FOR MULTICULTURAL COUNSELING & EDUCATION SERVICES		NO
7320	SAN FERNANDO VALLEY CMHC-TRANSITIONAL YOUTH		NO
7322	SAN FERNANDO VALLEY CMHC-HOMEBOUND		NO
7328	CHILDREN'S INSTITUTE INC.		NO
7329	SSG - OTTP		NO
7330	FOOTHILL FAMILY SERVICES-PASADENA	YES	
7331	FOOTHILL FAMILY SERVICES-WEST COVINA	YES	

Nov 12, 2020

167

For first time visit and/or new referrals, please contact provider. To obtain Mental Health Information and Services confidentially, please call the 24/7 ACCESS Center Hotline at 1-800-854-7771. (For TDD-TTY, call 1-866-735-2922.) To schedule interpreter services for the hearing impaired (American Sign Language-ASL), please call the 24/7 ACCESS Center Hotline. *MHS refers to individual/group therapy and collateral services. Provider: DMH = Directly-Operated Facility; NGA = Non-Governmental Agency (Contractor); FFS = Fee-for-Service.

Attestation

Provider Number	Provider Name	Attestation Received - YES	Attestation Received - NO
7332	HILLSIDES OUTPATIENT		NO
7334	DIDI HIRSCH-MAR VISTA		NO
7335	STAR VIEW COMMUNITY SERVICES		NO
7337	FIVE ACRES		NO
7340	VALLEY COORDINATED CHILDREN'S SERVICES		NO
7341	D'VEAL FAMILY & YOUTH SERVICES		NO
7342	MASADA HOMES		NO
7344	OPTIMIST BOYS HOME AND RANCH, INC. (SATELLITE)		NO
7344	OPTIMIST BOYS HOME AND RANCH, INC. (SATELLITE) BARRY J. NIDORF JUVENILE HALL		NO
7344	OPTIMIST YOUTH HOMES		NO
7344	OPTIMIST YOUTH HOMES (SATELLITE)		NO
7348	1736 FAMILY CRISIS CENTER		NO
7352	PALMDALE DISCOVERY CENTER		NO
7353	PACIFIC CLINICS-ARROYO FSP		NO
7354	SAN FERNANDO VALLEY CMHC-YOUTH & FAMILY CENTER		NO
7355	SAN FERNANDO VALLEY CMHC-YOUTH CONTACT FCCS		NO
7356	PHOENIX HOUSE OF L.A. INC.		NO
7357	DIDI HIRSCH-CULVER PALMS		NO
7358	SAN FERNANDO VALLEY CMHC-AB34		NO
7359	DIDI HIRSCH-METRO CENTER		NO
7360	ENKI-MARGARITA MENDEZ YOUTH AND FAMILY SERVICES		NO
7362	ASIAN PACIFIC-SFV		NO
7365	SHIELDS FOR FAMILIES		NO

Nov 12, 2020

168

For first time visit and/or new referrals, please contact provider. To obtain Mental Health Information and Services confidentially, please call the 24/7 ACCESS Center Hotline at 1-800-854-7771. (For TDD-TTY, call 1-866-735-2922.) To schedule interpreter services for the hearing impaired (American Sign Language-ASL), please call the 24/7 ACCESS Center Hotline. *MHS refers to individual/group therapy and collateral services. Provider: DMH = Directly-Operated Facility; NGA = Non-Governmental Agency (Contractor); FFS = Fee-for-Service.

Attestation

Provider Number	Provider Name	Attestation Received - YES	Attestation Received - NO
7367	STAR VIEW COMMUNITY SERVICES		NO
7368	THE INSTITUTE FOR REDESIGN AND LEARNING - ALMANSOR		NO
7369	SAN FERNANDO VALLEY CMHC-FAMILY LINKS		NO
7371	EL CENTRO AMISTAD-SAN FERNANDO		NO
7374	ROSEMARY CHILDREN'S SERVICES		NO
7377	GAY AND LESBIAN PEER COUNSELING		NO
7378	PACIFIC ASIAN COUNSELING SERVICES SFV		NO
7379	EMERGENCY OUTREACH BUREAU/CRISIS HOMELESS-METRO		NO
7379	SA 4, EMERGENCY OUTREACH/CRISIS HOMELESS		NO
7380	PACIFIC CLINICS - SIERRA FAMILY CENTER		NO
7381	BIENVENIDOS MONTEBELLO OP		NO
7385	EXODUS RECOVERY INC.		NO
7386	PALMDALE MENTAL HEALTH CENTER		NO
7390	CHILD & FAMILY GUIDANCE CENTER		NO
7394	THE HELP GROUP-WEST OUTPATIENT		NO
7396	SCHARP CHILD DAY TREATMENT		NO
7400	SSG - PROJECT 180		NO
7401	PACIFIC CLINICS ON LAKE		NO
7406	TELECARE HOP 7		NO
7407	FOOTHILL FAMILY SERVICES-HUDSON	YES	
7409	SCHARP ADULT SERVICES		NO
7413	CHILD & FAMILY CENTER		NO
7414	UNITED AMERICAN INDIAN INVOLVEMENT		NO
7418	PACIFIC CLINICS		NO

Nov 12, 2020

169

For first time visit and/or new referrals, please contact provider. To obtain Mental Health Information and Services confidentially, please call the 24/7 ACCESS Center Hotline at 1-800-854-7771. (For TDD-TTY, call 1-866-735-2922.) To schedule interpreter services for the hearing impaired (American Sign Language-ASL), please call the 24/7 ACCESS Center Hotline. *MHS refers to individual/group therapy and collateral services. Provider: DMH = Directly-Operated Facility; NGA = Non-Governmental Agency (Contractor); FFS = Fee-for-Service.

Attestation

Provider Number	Provider Name	Attestation Received - YES	Attestation Received - NO
7420	HILLVIEW MHC AB 109		NO
7421	AMERICAN INDIAN COUNSELING CENTER	YES	
7423	DIDI HIRSCH TAPER CENTER		NO
7426	PACIFIC ASIAN COUNSELING SERVICES		NO
7429	FAMILY SERVICES OF SANTA MONICA-VISTA DEL MAR		NO
7430	HERITAGE CLINIC PASADENA	YES	
7432	MASADA HOMES		NO
7433	THE GUIDANCE CENTER		NO
7436	MCKINLEY CHILDREN'S CENTER		NO
7439	PACIFIC CLINICS - CHILDRENS INTENSIVE COMMUNITY SERVICES		NO
7440	D'VEAL FAMILY & YOUTH SERVICES		NO
7441	PACIFIC CLINICS-CHILD & FAMILY - FIELD BASED INTENSIVE CARE		NO
7442	SPECIALIZED FOSTER CARE-PASADENA	YES	
7443	SPECIALIZED FOSTER CARE-METRO NORTH		NO
7444	OPTIMIST YOUTH & FAMILY SERVICES		NO
7445	SAN FERNANDO VALLEY CMHC-CSOC		NO
7446	UCLA TIES FOR ADOPTION		NO
7449	CHILDREN'S HOSPITAL LA-COVENANT		NO
7451	SFVCMHC WRAPAROUND		NO
7452	ENKI YOUTH FAMILY SERVICES-EL MONTE		NO
7453	ETTIE LEE HOMES-POMONA		NO
7455	PENNY LANE CENTERS		NO
7458	JUVENILE COURT MENTAL HEALTH SERVICES		NO
7461	HOMELESS OUTREACH PSYCHIATRIC EVALUATION		NO

Nov 12, 2020

170

For first time visit and/or new referrals, please contact provider. To obtain Mental Health Information and Services confidentially, please call the 24/7 ACCESS Center Hotline at 1-800-854-7771. (For TDD-TTY, call 1-866-735-2922.) To schedule interpreter services for the hearing impaired (American Sign Language-ASL), please call the 24/7 ACCESS Center Hotline. *MHS refers to individual/group therapy and collateral services. Provider: DMH = Directly-Operated Facility; NGA = Non-Governmental Agency (Contractor); FFS = Fee-for-Service.

Attestation

Provider Number	Provider Name	Attestation Received - YES	Attestation Received - NO
	(HOPE)		
7463	FOOTHILL FAMILY SERVICES-EL MONTE	YES	
7465	SHIELDS FOR FAMILIES		NO
7468	SAN ANTONIO MENTAL HEALTH CENTER	YES	
7469	CHILDNET YOUTH & FAMILY SERVICES		NO
7470	GATEWAYS NORMANDIE VILLAGE EAST OP CLINIC		NO
7471	COMMUNITY FAMILY GUIDANCE CENTER		NO
7472	ENKI BOYLE HEIGHTS		NO
7473	CHILD BUREAU OF SOUTHERN CA-LANCASTER DT		NO
7474	MARYVALE		NO
7475	EMERGENCY OUTREACH BUREAU/CRISIS HOMELESS - EDELMAN		NO
7476	SA 6, EMERGENCY OUTREACH BUREAU/CRISIS HOMELESS		NO
7477	EMERGENCY OUTREACH BUREAU/CRISIS HOMELESS - SAN FERNANDO		NO
7478	EMERGENCY OUTREACH BUREAU/CRISIS HOMELESS - AV		NO
7479	CHILD AND FAMILY CENTER		NO
7479	CHILD AND FAMILY CENTER. CAMP MUNOZ/MENDENHALL (SATELLITE)	YES	
7480	VIP COMMUNITY MENTAL HEALTH CENTER		NO
7481	STIRLING BEHAVIORAL HEALTH INSTITUTE		NO
7482	MENTAL HEALTH URGENT CARE CENTER @ LONG BEACH		NO
7483	COUNSELING4KIDS		NO
7488	CHILDREN'S CENTER OF ANTELOPE VALLEY		NO

Nov 12, 2020

171

For first time visit and/or new referrals, please contact provider. To obtain Mental Health Information and Services confidentially, please call the 24/7 ACCESS Center Hotline at 1-800-854-7771. (For TDD-TTY, call 1-866-735-2922.) To schedule interpreter services for the hearing impaired (American Sign Language-ASL), please call the 24/7 ACCESS Center Hotline. *MHS refers to individual/group therapy and collateral services. Provider: DMH = Directly-Operated Facility; NGA = Non-Governmental Agency (Contractor); FFS = Fee-for-Service.

Attestation

Provider Number	Provider Name	Attestation Received - YES	Attestation Received - NO
7490	THE HELP GROUP-PROJECT SIX		NO
7493	THE STAR VIEW COMMUNITY SERVICES		NO
7494	HAMBURGER HOME - AVIVA FAMILY AND CHILDREN'S SERVICES		NO
7495	PACIFIC CLINICS-LATINA PROGRAM		NO
7502	PACIFIC CLINICS-HYE WRAP PROGRAM		NO
7503	CENTRAL JUVENILE HALL - STAR VIEW ADOLESCENT CENTER INC.		NO
7503	STAR VIEW ADOLESCENT CENTER INC.		NO
7504	HOMES FOR LIFE FOUNDATION		NO
7506	HOMES FOR LIFE FOUNDATION		NO
7509	SPECIALIZED FOSTER CARE-TORRANCE		NO
7510	SSG-HOPICS BEHAVIORAL HEALTH SERVICES		NO
7511	PENNY LANE: COMMERCE		NO
7515	NEW DIRECTIONS INCORPORATED		NO
7516	COUNSELING 4 KIDS-TORRANCE		NO
7517	SSG - ASIAN PACIFIC COUNSELING & TREATMENT CENTER		NO
7519	CA HISPANIC COMMISSION ALCOHOL & DRUG ABUSE		NO
7520	LINCOLN HEIGHTS FAMILY RECOVERY CENTER		NO
7521	BHS HOLLYWOOD RECOVERY CENTER		NO
7522	TARZANA TREATMENT CENTER INC.		NO
7525	STEP UP ON SECOND STREET-DANIEL'S PLACE		NO
7526	STEP UP ON SECOND STREET-ADULT FCCS-TAY FSP		NO
7527	SPIRIT FAMILY SERVICES KEYS		NO
7528	ASIAN AMERICAN DRUG ABUSE PROGRAM (AADAP)		NO

Nov 12, 2020

172

For first time visit and/or new referrals, please contact provider. To obtain Mental Health Information and Services confidentially, please call the 24/7 ACCESS Center Hotline at 1-800-854-7771. (For TDD-TTY, call 1-866-735-2922.) To schedule interpreter services for the hearing impaired (American Sign Language-ASL), please call the 24/7 ACCESS Center Hotline. *MHS refers to individual/group therapy and collateral services. Provider: DMH = Directly-Operated Facility; NGA = Non-Governmental Agency (Contractor); FFS = Fee-for-Service.

Attestation

Provider Number	Provider Name	Attestation Received - YES	Attestation Received - NO
7530	TOBINWORLD	YES	
7534	OLIVE CREST		NO
7534	OLIVE CREST TREATMENT CENTERS-WRAPAROUND		NO
7535	DREW CHILD DEVELOPMENT CORPORATION		NO
7536	SHIELDS FOR FAMILIES-SCHOOL BASED		NO
7538	ST. ANNE'S		NO
7539	ALAFIA MENTAL HEALTH INSTITUTE		NO
7540	ALAFIA MENTAL HEALTH INSTITUTE		NO
7541	OPTIMIST YOUTH HOMES-PALMDALE		NO
7542	PERSONAL INVOLVEMENT CENTER		NO
7543	LA CASA MHC		NO
7545	CENTER FOR INTEGRATED FAMILY AND HEALTH SERVICES		NO
7545	CENTER FOR INTEGRATED FAMILY AND HEALTH SERVICES - HOLLAND MIDDLE SCHOOL		NO
7545	CENTER FOR INTEGRATED FAMILY AND HEALTH SERVICES - JONES JR. HIGH SCHOOL		NO
7545	CENTER FOR INTEGRATED FAMILY AND HEALTH SERVICES - OLIVE MIDDLE SCHOOL		NO
7545	CENTER FOR INTEGRATED FAMILY AND HEALTH SERVICES -SIERRA VISTA JR. HIGH SCHOOL		NO
7546	PARA LOS NINOS		NO
7547	INST. FOR MULTICULTURAL COUNSELING AND EDUCATION SRVS., INC.		NO
7549	STEP OUT		NO
7552	TRINITY		NO
7555	SCHARP- ADULT OUTPATIENT SERVICES		NO

Nov 12, 2020

173

For first time visit and/or new referrals, please contact provider. To obtain Mental Health Information and Services confidentially, please call the 24/7 ACCESS Center Hotline at 1-800-854-7771. (For TDD-TTY, call 1-866-735-2922.) To schedule interpreter services for the hearing impaired (American Sign Language-ASL), please call the 24/7 ACCESS Center Hotline. *MHS refers to individual/group therapy and collateral services. Provider: DMH = Directly-Operated Facility; NGA = Non-Governmental Agency (Contractor); FFS = Fee-for-Service.

Attestation

Provider Number	Provider Name	Attestation Received - YES	Attestation Received - NO
7557	HATHAWAY SYCAMORES CHILD & FAMILY SERVICES		NO
7558	AFH - CRISIS RESOLUTION SERVICES		NO
7559	SPECIALIZED FOSTER CARE-SANTA CLARITA	YES	
7561	PACIFIC CLINICS-BONITA FAMILY SERVICE CENTER		NO
7562	ALMA FAMILY SERVICES		NO
7563	SAN GABRIEL CHILDREN'S CENTER		NO
7564	THE VILLAGE FAMILY SERVICES		NO
7567	PASADENA UNIFIED SCHOOL DISTRICT		NO
7570	CHILDREN'S BUREAU		NO
7572	LOS PADRONES JUVENILE HALL-PATHWAY COMMUNITY SERVICES		NO
7572	PROVIDENCE COMMUNITY SERVICES		NO
7573	SHIELDS FOR FAMILIES		NO
7574	HELPLINE YOUTH COUNSELING INC.		NO
7576	MENTAL HEALTH AMERICA OF LOS ANGELES WELLNES CENTER		NO
7577	KEDREN COMMUNITY MENTAL HEALTH CLINIC		NO
7579	ASIAN PACIFIC COUNSELING & TREATMENT CENTER		NO
7581	EL CENTRO DEL PUEBLO INC.	YES	
7584	ROYBAL SCHOOL BASED PROGRAM		NO
7586	CHILDREN'S HOSPITAL-LA QUEENSCARE HEALTH AND FAITH		NO
7588	EMERGENCY OUTREACH BUREAU/CRISIS HOMELESS-EAST		NO
7588	SA7, EMERGENCY OUTREACH BUREAU/CRISIS HOMELESS		NO
7589	ANNE SIPPI CLINIC COMMUNITY SERVICES		NO

Nov 12, 2020

174

For first time visit and/or new referrals, please contact provider. To obtain Mental Health Information and Services confidentially, please call the 24/7 ACCESS Center Hotline at 1-800-854-7771. (For TDD-TTY, call 1-866-735-2922.) To schedule interpreter services for the hearing impaired (American Sign Language-ASL), please call the 24/7 ACCESS Center Hotline. *MHS refers to individual/group therapy and collateral services. Provider: DMH = Directly-Operated Facility; NGA = Non-Governmental Agency (Contractor); FFS = Fee-for-Service.

Attestation

Provider Number	Provider Name	Attestation Received - YES	Attestation Received - NO
7589	ASC TREATMENT GROUP - ANNE SIPPI CLINIC		NO
7590	CALIFORNIA BEHAVIORAL HEALTH		NO
7591	LAC-OLIVE VIEW- MENTAL HEALTH CENTER		NO
7594	CEDAR STREET HOMES		NO
7595	BRIDGES INC.- PROJECT INDEPENDENCE		NO
7596	EMOTIONAL HEALTH ASSOCIATION-SHARE	YES	
7597	SFVCMHC TBS		NO
7599	HATHAWAY-SYCAMORES CHILD AND FAMILY SERVICES, FAIR OAKS PACE		NO
7600	HATHAWAY SYCAMORES CHILD FAMILY SERVICES		NO
7601	HATHAWAY-SYCAMORES CHILD AND FAMILY SERVICES, EN PACE		NO
7602	HATHAWAY-SYCAMORES CHILD AND FAMILY SERVICES		NO
7605	CRITTENTON SERVICES FOR CHILDREN & FAMILIES		NO
7607	SPECIALIZED FOSTER CARE-COMPTON	YES	
7608	SPECIALIZED FOSTER CARE-FIGUEROA		NO
7610	SPECIALIZED FOSTER CARE-PALMDALE	YES	
7611	SPECIALIZED FOSTER CARE-VERMONT		NO
7612	SPECIALIZED FOSTER CARE - WATERIDGE		NO
7614	CHILDREN'S HOSPITAL COMMUNITY MENTAL HEALTH CENTER		NO
7616	SPECIALIZED FOSTER CARE PROGRAM-COMMERCE		NO
7617	SPECIALIZED FOSTER CARE PROGRAM-SANTA FE SPRINGS		NO
7618	SOCIAL MODEL RECOVERY SYSTEMS - THE RIVER COMMUNITY		NO
7619	SPECIAL SERVICES FOR GROUPS API ALLIANCE		NO

Nov 12, 2020

175

For first time visit and/or new referrals, please contact provider. To obtain Mental Health Information and Services confidentially, please call the 24/7 ACCESS Center Hotline at 1-800-854-7771. (For TDD-TTY, call 1-866-735-2922.) To schedule interpreter services for the hearing impaired (American Sign Language-ASL), please call the 24/7 ACCESS Center Hotline. *MHS refers to individual/group therapy and collateral services. Provider: DMH = Directly-Operated Facility; NGA = Non-Governmental Agency (Contractor); FFS = Fee-for-Service.

Attestation

Provider Number	Provider Name	Attestation Received - YES	Attestation Received - NO
7620	SPECIALIZED FOSTER CARE-LANCASTER	YES	
7621	SA 3, EMERGENCY OUTREACH BUREAU/CRISIS HOMELESS - SG		NO
7622	SAN FERNANDO VALLEY CMHC-JUVENILE JUSTICE PROGRAM		NO
7622	SAN FERNANDO VALLEY COMMUNITY MENTAL HEALTH CENTER, INC., - PROBATION CAMP BARRY J. NIDORF JUVENILE HALL		NO
7624	THE HELP GROUP CHILD AND FAMILY CENTER		NO
7625	CHILDREN'S INSTITUTE INC.		NO
7626	AVIVA FAMILY AND CHILDREN'S SERVICES		NO
7636	ST. FRANCIS MEDICAL CENTER		NO
7637	ST. FRANCIS MEDICAL CENTER-CHILD COUNSELING CENTER		NO
7638	CHCADA		NO
7640	FIVE ACRES		NO
7641	TESSIE CLEVELAND COMMUNITY SERVICES		NO
7642	PASADENA COUNCIL ON ALCOHOL AND DRUG DEPENDENCE - SOCIAL MODEL RECOVERY		NO
7643	MHA TAY ACADEMY		NO
7645	HILLSIDES FRC, EP		NO
7646	EXODUS RECOVERY INC. OP		NO
7647	ADULT TELECARE LA SERVICES (ATLAS)		NO
7648	HERITAGE CLINIC FOR SENIORS		NO
7649	TARZANA TREATMENT CENTERS, INC.		NO
7650	TARZANA TREATMENT CENTER		NO
7651	SAN FERNANDO MHS FSP PROGRAM		NO

Nov 12, 2020

176

For first time visit and/or new referrals, please contact provider. To obtain Mental Health Information and Services confidentially, please call the 24/7 ACCESS Center Hotline at 1-800-854-7771. (For TDD-TTY, call 1-866-735-2922.) To schedule interpreter services for the hearing impaired (American Sign Language-ASL), please call the 24/7 ACCESS Center Hotline. *MHS refers to individual/group therapy and collateral services. Provider: DMH = Directly-Operated Facility; NGA = Non-Governmental Agency (Contractor); FFS = Fee-for-Service.

Attestation

Provider Number	Provider Name	Attestation Received - YES	Attestation Received - NO
7654	SCHARP - CHILD OUTPATIENT SERVICES		NO
7655	ALAFIA MENTAL HEALTH INSTITUTION		NO
7657	SSG-PACIFIC ASIAN COUNSELING SERVICES (PACS-LA)		NO
7659	CRITTENTON SERVICES FOR CHILDREN & FAMILIES		NO
7660	CRITTENTON SERVICES FOR CHILDREN & FAMILIES		NO
7661	CRITTENTON SERVICES FOR CHILDREN AND FAMILIES		NO
7667	ALMANSOR CLINICAL SERVICES		NO
7669	HATHAWAY SYCAMORES CHILD AND FAMILY SERVICES		NO
7670	HATHAWAY-SYCAMORES CHILD AND FAMILY SERVICES		NO
7671	GATEWAYS OUTPATIENT PERCY VILLAGE		NO
7672	SOUTH BAY MHS FSP PROGRAM		NO
7677	PC PORTALS MARIPOSA CLUBHOUSE		NO
7678	PC PORTALS WILSHIRE		NO
7679	HERITAGE CLINIC-PALMDALE		NO
7680	SSG-LITTLE TOKYO SERVICE CENTER		NO
7681	SSG WEBER COMMUNITY CENTER		NO
7682	SSG-SAMOAN NATIONAL NURSES ASSOCIATION		NO
7683	SSG-CAMBODIAN ASSOCIATION OF AMERICA		NO
7685	SSG CHINATOWN SERVICE CENTER		NO
7685	SSG-CHINATOWN SERVICE CENTER		NO
7686	SSG-PACS-LONG BEACH		NO
7690	PACIFIC CLINICS PORTALS COMMUNITY CONNECTIONS		NO
7693	JEWISH FAMILY SERVICE OF LOS ANGELES (JFSLA)		NO
7694	JEWISH FAMILY SERVICES OF LOS ANGELES		NO
7697	LOS PADRINOS JUVENILE HALL - PACIFIC CLINICS		NO

Nov 12, 2020

177

For first time visit and/or new referrals, please contact provider. To obtain Mental Health Information and Services confidentially, please call the 24/7 ACCESS Center Hotline at 1-800-854-7771. (For TDD-TTY, call 1-866-735-2922.) To schedule interpreter services for the hearing impaired (American Sign Language-ASL), please call the 24/7 ACCESS Center Hotline. *MHS refers to individual/group therapy and collateral services. Provider: DMH = Directly-Operated Facility; NGA = Non-Governmental Agency (Contractor); FFS = Fee-for-Service.

Attestation

Provider Number	Provider Name	Attestation Received - YES	Attestation Received - NO
7701	HOMELESS OUTREACH AND MOBILE ENGAGEMENT (HOME) TEAM		NO
7702	TIES FOR FAMILIES		NO
7705	SERVICE AREA 3 FULL SERVICE PARTNERSHIP	YES	
7706	DOWNTOWN MENTAL HEALTH CENTER FSP PROGRAM		NO
7707	COMPTON MENTAL HEALTH CENTER		NO
7708	THE INSTITUTE FOR THE REDESIGN OF LEARNING - ALMANSOR		NO
7709	ALMA FAMILY SERVICES		NO
7710	SOCIAL MODEL RECOVERY SYSTEMS - RIVER COMMUNITY DAY TREATMENT		NO
7711	PATHWAYS COMMUNITY SERVICES		NO
7712	ETTIE LEE		NO
7714	VISTA DEL MAR WRAPAROUND SA 8		NO
7715	WOMEN'S REINTEGRATION SERVICES	YES	
7716	ANTELOPE VALLEY KIDZ CONNECTION	YES	
7718	MASADA HOMES		NO
7721	DREW CHILD DEVELOPMENT CORPORATION		NO
7722	CHCADA - CLIENT RUN WELLNESS CENTER		NO
7724	WISE & HEALTHY AGING		NO
7727	JWCH INSTITUTE INC.		NO
7730	EXCEPTIONAL CHILDREN'S FOUNDATION		NO
7731	TRI-CITIES MHC		NO
7733	LOS ANGELES CHILD GUIDANCE CLINIC - BHS LINCOLN HEIGHTS	YES	
7736	CHILDREN'S INSTITUTE INC.		NO
7737	SHIELDS FOR FAMILIES KAY STREET		NO

Nov 12, 2020

178

For first time visit and/or new referrals, please contact provider. To obtain Mental Health Information and Services confidentially, please call the 24/7 ACCESS Center Hotline at 1-800-854-7771. (For TDD-TTY, call 1-866-735-2922.) To schedule interpreter services for the hearing impaired (American Sign Language-ASL), please call the 24/7 ACCESS Center Hotline. *MHS refers to individual/group therapy and collateral services. Provider: DMH = Directly-Operated Facility; NGA = Non-Governmental Agency (Contractor); FFS = Fee-for-Service.

Attestation

Provider Number	Provider Name	Attestation Received - YES	Attestation Received - NO
7738	HARBOR UCLA WELLNESS CENTER		NO
7739	HOLLYWOOD MHC WELLNESS CENTER		NO
7740	SA 8, EMERGENCY OUTREACH BUREAU/CRISIS HOMELESS		NO
7741	HATHAWAY SYCAMORES CHILD AND FAMILY SERVICES		NO
7744	HATHAWAY SYCAMORES CHILD FAMILY SERVICES		NO
7746	WEST VALLEY MHC, FCCS/FSP		NO
7748	PACIFIC CLINICS - HOPE CENTER		NO
7749	UPLIFT FAMILY SERVICES - HOLLYGROVE		NO
7750	UPLIFT FAMILY SERVICES - LYNWOOD		NO
7751	PATHWAYS COMMUNITY SERVICES		NO
7752	SPECIALIZED FOSTER CARE-SOUTH COUNTY		NO
7753	SPECIALIZED FOSTER CARE-GLENDORA	YES	
7754	SPECIALIZED FOSTER CARE-CHATSWORTH		NO
7755	FOOTHILL FAMILY SERVICE DUARTE	YES	
7756	AV WELLNESS & ENRICHMENT CENTER		NO
7757	DOWNTOWN MENTAL HEALTH CENTER - FCCS PROGRAM		NO
7758	SOUTH BAY MENTAL HEALTH SERVICES WELLNESS CENTER		NO
7759	PROJECT 50 MENTAL HEALTH CLINIC		NO
7760	SAN FERNANDO ADULT FCCS		NO
7761	SAN FERNANDO VALLEY COMMUNITY MENTAL HEALTH CENTER, INC-CORNERSTONE STREET TO HOME		NO
7762	ST. JOSEPH'S CENTER-VENICE/LINCOLN		NO
7763	SHIELDS FOR FAMILIES		NO
7764	SHIELDS FOR FAMILIES	YES	

Nov 12, 2020

179

For first time visit and/or new referrals, please contact provider. To obtain Mental Health Information and Services confidentially, please call the 24/7 ACCESS Center Hotline at 1-800-854-7771. (For TDD-TTY, call 1-866-735-2922.) To schedule interpreter services for the hearing impaired (American Sign Language-ASL), please call the 24/7 ACCESS Center Hotline. *MHS refers to individual/group therapy and collateral services. Provider: DMH = Directly-Operated Facility; NGA = Non-Governmental Agency (Contractor); FFS = Fee-for-Service.

Attestation

Provider Number	Provider Name	Attestation Received - YES	Attestation Received - NO
7765	NORTHEAST WELLNESS CENTER		NO
7768	SHIELDS FOR FAMILIES		NO
7769	EDELMAN WELLNESS CENTER		NO
7770	FACTS PROGRAM		NO
7771	HOLLYWOOD MHC FSP PROGRAM		NO
7772	BRIDGES INC. TRUSTART OP		NO
7773	SHARE DOWNTOWN		NO
7774	EXODUS WELLNESS CENTER		NO
7775	D'VEAL FAMILY & YOUTH SERVICES - WRAP		NO
7776	VISTA DEL MAR		NO
7777	EAST SAN GABRIEL VALLEY MENTAL HEALTH		NO
7779	CHILDREN'S INSTITUTE INC.		NO
7780	CHILDREN'S INSTITUTE INC.		NO
7782	CHILDREN'S BUREAU SOCIAL MAGNOLIA PLACE		NO
7783	EXODUS RECOVERY INC.		NO
7784	AMERICAN INDIAN COUNSELING CENTER	YES	
7785	HERITAGE CLINIC MID-CITY		NO
7787	VIP-COMMUNITY MENTAL HEALTH CENTER		NO
7789	UCLA TIES FOR FAMILIES		NO
7790	TESSIE CLEVELAND COMMUNITY SERVICES		NO
7791	VIP CMHC INC-LAC/USC CHILD PSYCHIATRY		NO
7792	MASADA HOMES		NO
7793	TESSIE CLEVELAND COMMUNITY SERVICE		NO
7795	SPECIALIZED FOSTER CARE - WEST LOS ANGELES		NO
7796	EXODUS RECOVERY URGENT CARE CENTER-EASTSIDE		NO

Nov 12, 2020

180

For first time visit and/or new referrals, please contact provider. To obtain Mental Health Information and Services confidentially, please call the 24/7 ACCESS Center Hotline at 1-800-854-7771. (For TDD-TTY, call 1-866-735-2922.) To schedule interpreter services for the hearing impaired (American Sign Language-ASL), please call the 24/7 ACCESS Center Hotline. *MHS refers to individual/group therapy and collateral services. Provider: DMH = Directly-Operated Facility; NGA = Non-Governmental Agency (Contractor); FFS = Fee-for-Service.

Attestation

Provider Number	Provider Name	Attestation Received - YES	Attestation Received - NO
7797	EXODUS RECOVERY INC. WESTSIDE		NO
7798	TRI-CITIES MENTAL HEALTH AUTHORITY		NO
7801	DMH/DHS COLLABORATION-EL MONTE		NO
7803	DMH/DHS COLLABORATION PROGRAM - ROYBAL		NO
7804	DMH-DHS COLLABORATION-LONG BEACH		NO
7805	STEP UP ON HOLLYWOOD		NO
7806	ALMA FAMILY SERVICES		NO
7807	DMH/DHS COLLABORATION		NO
7809	SPECIALIZED FOSTER CARE-EL MONTE	YES	
7810	SPECIALIZED FOSTER CARE	YES	
7811	SPECIALIZED FOSTER CARE	YES	
7812	DIDI HIRSCH PSYCHIATRIC SERVICES-GLENDALE		NO
7813	RIO HONDO CENTRO DE BIENESTAR	YES	
7814	LOS ANGELES UNIFIED SCHOOL DISTRICT, SCHOOL MENTAL HEALTH VALLY CLINIC		NO
7815	MARYVALE		NO
7816	ROSEMARY CHILDREN'S SERVICES		NO
7817	CHILDREN'S INSTITUTE INC.		NO
7818	DMH/DHS COLLABORATION - MID VALLEY		NO
7819	ALMA FAMILY SERVICES		NO
7820	OCEAN PARK COMMUNITY CENTER		NO
7821	JUVENILE JUSTICE TRANSITIONAL AFTERCARE SERVICES	YES	
7822	MASADA HOMES		NO
7824	SCHARP - BELLFLOWER		NO
7825	KOREAN AMERICAN FAMILY SERVICES		NO

Nov 12, 2020

181

For first time visit and/or new referrals, please contact provider. To obtain Mental Health Information and Services confidentially, please call the 24/7 ACCESS Center Hotline at 1-800-854-7771. (For TDD-TTY, call 1-866-735-2922.) To schedule interpreter services for the hearing impaired (American Sign Language-ASL), please call the 24/7 ACCESS Center Hotline. *MHS refers to individual/group therapy and collateral services. Provider: DMH = Directly-Operated Facility; NGA = Non-Governmental Agency (Contractor); FFS = Fee-for-Service.

Attestation

Provider Number	Provider Name	Attestation Received - YES	Attestation Received - NO
7826	SCHARP - LYNWOOD		NO
7827	WESLEY HEALTH CENTERS		NO
7828	THE SABAN FREE CLINIC		NO
7829	EISNER PEDIATRIC FAMILY MEDICAL CENTER		NO
7830	JWCH WESLEY HEALTH CENTERS		NO
7832	TARZANA TREATMENT CENTERS, INC.		NO
7833	TARZANA TREATMENT CENTERS, INC.		NO
7834	ASIAN PACIFIC HEALTH CARE VENTURE - INNOVATIONS		NO
7835	SSG AVRC		NO
7835	SSG-AVRC - ANTELOPE VALLEY		NO
7836	JUNIOR BLIND OF AMERICA		NO
7837	TELECARE IMD STEP-DOWN		NO
7838	EL DORADO - INGLEWOOD		NO
7841	DMH/DHS COLLABORATION - MLK MACC		NO
7842	ST. JOSEPH'S CENTER-SANTA MONICA		NO
7843	CHILDREN'S HOSPITAL LOS ANGELES		NO
7844	TELECARE LOS ANGELES - AB 109		NO
7846	CHILDREN'S INSTITUTE, INC.		NO
7847	OCEAN PARK COMMUNITY CENTER		NO
7849	HELPLINE YOUTH COUNSELING INC.		NO
7850	UNIVERSITY MUSLIM MEDICAL ASSOCIATION (UMMA)		NO
7851	THE VILLAGE FAMILY SERVICES		NO
7852	MASADA HOMES		NO
7854	FOR THE CHILD, INC. OP		NO
7855	PENNY LANE CENTERS		NO

Nov 12, 2020

182

For first time visit and/or new referrals, please contact provider. To obtain Mental Health Information and Services confidentially, please call the 24/7 ACCESS Center Hotline at 1-800-854-7771. (For TDD-TTY, call 1-866-735-2922.) To schedule interpreter services for the hearing impaired (American Sign Language-ASL), please call the 24/7 ACCESS Center Hotline. *MHS refers to individual/group therapy and collateral services. Provider: DMH = Directly-Operated Facility; NGA = Non-Governmental Agency (Contractor); FFS = Fee-for-Service.

Attestation

Provider Number	Provider Name	Attestation Received - YES	Attestation Received - NO
7856	STAR VIEW COMMUNITY SERVICES, CARSON CENTER		NO
7857	THE VILLAGE FAMILY SERVICES		NO
7858	PACIFIC CLINIC - CENTRO FAMILIAR - EL MONTE		NO
7860	HACIENDA OF HOPE, PRRCH COS		NO
7861	EGGLESTON YOUTH CENTER INC.		NO
7862	HAYNES FAMILY OF PROGRAMS, INC.		NO
7863	ALMA FAMILY SERVICES		NO
7864	PENNY LANE CENTERS		NO
7865	VETERANS AND LOVED ONES RECOVERY (VALOR)		NO
7866	THE WHOLE CHILD		NO
7868	DIDI HIRSCH PSYCHIATRIC SERVICES - PROJECT 60		NO
7870	SHARE, PRRCH		NO
7871	EXODUS RECOVERY INC.,		NO
7872	D'VEAL FAMILY & YOUTH SERVICES		NO
7873	D'VEAL FAMILY & YOUTH SERVICES		NO
7874	D'VEAL FAMILY & YOUTH SERVICES		NO
7875	ALMA FAMILY SERVICES		NO
7876	KEDREN COMMUNITY MENTAL HEALTH CENTER		NO
7877	BURBANK MENTAL HEALTH EVALUATION TEAM		NO
7878	D'VEAL FAMILY & YOUTH SERVICES		NO
7879	VIP COMMUNITY MENTAL HEALTH CENTER, INC.		NO
7880	D'VEAL FAMILY & YOUTH SERVICES		NO
7881	SSG PROJECT 180 NORTH		NO
7882	TARZANA TREATMENT CENTERS		NO
7883	HILLSIDES FAMILY RESOURCE CENTER EAST SAN GABRIEL VALLEY		NO

Nov 12, 2020

183

For first time visit and/or new referrals, please contact provider. To obtain Mental Health Information and Services confidentially, please call the 24/7 ACCESS Center Hotline at 1-800-854-7771. (For TDD-TTY, call 1-866-735-2922.) To schedule interpreter services for the hearing impaired (American Sign Language-ASL), please call the 24/7 ACCESS Center Hotline. *MHS refers to individual/group therapy and collateral services. Provider: DMH = Directly-Operated Facility; NGA = Non-Governmental Agency (Contractor); FFS = Fee-for-Service.

Attestation

Provider Number	Provider Name	Attestation Received - YES	Attestation Received - NO
7884	CA HISPANIC COMMISSION ALCOHOL & DRUG ABUSE - ROOSEVELT ISHC		NO
7885	TARZANA TREATMENT CENTERS		NO
7887	JWCH INSTITUTE INC. - CENTER FOR COMMUNITY HEALTH		NO
7888	JWCH INSTITUTE-NORWALK REGIONAL HEALTH CENTER		NO
7889	AVIVA FAMILY AND CHILDREN'S SERVICES		NO
7890	EXODUS URGENT CARE CENTER (UCC) - 23 HOUR PSYCHIATRIC CRISIS CENTER		NO
7891	BAYFRONT YOUTH AND FAMILY SERVICES		NO
7892	DMH-DHS COLLABORATION-LONG BEACH		NO
7893	ALMA FAMILY SERVICES		NO
7894	EL DORADO-VAN NUYS MEDICAL		NO
7895	DAVID & MARGARET HOMES		NO
7896	PACIFIC CLINICS - WHITTIER FAMILY CENTER		NO
7897	ELDORADO MEDICAL AND MENTAL HEALTH SERVICES-LAWNDALE		NO
7898	SHIELDS FOR FAMILIES		NO
7899	ELDORADO PALMDALE		NO
7900	NEW DIRECTION VETS, OASIS FOR WOMEN		NO
7902	PACIFIC CLINICS - CENTRO FAMILIA		NO
7903	PACIFIC CLINICS - EL CAMINO		NO
7904	DOWNTOWN MHC		NO
7905	DOWNTOWN MENTAL HEALTH CENTER - CALWORKS PROGRAM		NO
7906	SCHOOL THREAT ASSESSMENT RESPONSE TEAM (START) PROGRAM		NO

Nov 12, 2020

184

For first time visit and/or new referrals, please contact provider. To obtain Mental Health Information and Services confidentially, please call the 24/7 ACCESS Center Hotline at 1-800-854-7771. (For TDD-TTY, call 1-866-735-2922.) To schedule interpreter services for the hearing impaired (American Sign Language-ASL), please call the 24/7 ACCESS Center Hotline. *MHS refers to individual/group therapy and collateral services. Provider: DMH = Directly-Operated Facility; NGA = Non-Governmental Agency (Contractor); FFS = Fee-for-Service.

Attestation

Provider Number	Provider Name	Attestation Received - YES	Attestation Received - NO
7909	NEW DIRECTION VETS		NO
7910	PERSONAL INVOLVEMENT CENTER		NO
7911	EXODUS RECOVERY INC. MLK-ICC		NO
7912	THE WHOLE CHILD - BIRTH TO FIVE CENTER		NO
7913	LAC-OLIVE VIEW-URGENT CARE CENTER		NO
7915	PACIFIC CLINIC - LIFE PROGRAM		NO
7916	MLK MEDICAL HUB		NO
7917	SA 6 SB82 MOBILE TRIAGE TEAM		NO
7918	PROJECT RETURN		NO
7919	PROJECT RETURN; HOPEWELL		NO
7920	PROJECT RETURN; HACIENDA OF HOPE		NO
7921	SA 3 SB82 MOBILE TRIAGE TEAM	YES	
7922	SA 2 SB82 MOBILE TRIAGE TEAM		NO
7924	SA 4 MOBILE TRIAGE TEAM		NO
7925	HILLSIDE FAMILY RESOURCE CENTER-POMONA		NO
7926	ASSISTED OUTPATIENT TREATMENT		NO
7927	TOPANGA WEST, ACT HEALTH AND WELLNESS CLINIC		NO
7928	ASSISTED OUTPATIENT TREATMENT-LITTLE TOKYO		NO
7929	SA 7 SB82 MOBILE TRIAGE TEAM	YES	
7930	OLIVE VIEW MEDICAL CENTER HUB		NO
7931	HIGH DESERT REGIONAL MEDICAL CENTER		NO
7933	SA1 SB82 MOBILE TRIAGE TEAM		NO
7934	SA 5 SB82 MOBILE TRIAGE TEAM		NO
7935	SA 8 SB82 MOBILE TRIAGE TEAM		NO
7936	HAMBURGER HOME: AVIVA FAMILY AND CHILDREN'S SERVICES		NO

Nov 12, 2020

185

For first time visit and/or new referrals, please contact provider. To obtain Mental Health Information and Services confidentially, please call the 24/7 ACCESS Center Hotline at 1-800-854-7771. (For TDD-TTY, call 1-866-735-2922.) To schedule interpreter services for the hearing impaired (American Sign Language-ASL), please call the 24/7 ACCESS Center Hotline. *MHS refers to individual/group therapy and collateral services. Provider: DMH = Directly-Operated Facility; NGA = Non-Governmental Agency (Contractor); FFS = Fee-for-Service.

Attestation

Provider Number	Provider Name	Attestation Received - YES	Attestation Received - NO
7937	VISTA DEL MAR WRAPAROUND SA 6		NO
7938	TORRANCE MET		NO
7939	BAYFRONT YOUTH AND FAMILY SERVICES		NO
7940	TESSIE CLEVELAND COM SERVICES		NO
7941	SPIRITT FAMILY SERVICES		NO
7942	ASPIRANET 8		NO
7943	INSTITUTE FOR FAMILY CENTERED SERVICES, DBA CA MENTOR		NO
7944	INSTITUTE FOR FAMILY CENTERED SERVICES, DBA CA MENTOR		NO
7945	AMANECER COMMUNITY COUSELING SERVICE		NO
7946	SOUTH EAST REGION MET		NO
7946	SOUTHEAST REGION MET		NO
7947	HOMELESS INNOVATION PROJECT		NO
7948	ROSEMARY CHILDREN'S SERVICES		NO
7949	SPECIALIZED FOSTER CARE-VAN NUYS	YES	
7950	STAR VIEW BEHAVIORAL HEALTH, INC.		NO
7951	STAR VIEW BEHAVIORAL HEALTH, INC.		NO
7952	STAR VIEW BEHAVIORAL HEALTH		NO
7953	THE HELP GROUP CHILD AND FAMILY		NO
7954	PERSONAL INVOLVEMENT CENTER, INC.		NO
7955	WEST CENTRAL WELL AND FIELD BASE TEAM		NO
7955	WEST CENTRAL WELLNESS AND FIELD BASED SERVICES		NO
7956	ST. ANNE'S AT CRENSHAW DISTRICT		NO
7957	GATEWAYS CHILD AND ADOLESCENT OUTPATIENT PROGRAM		NO

Nov 12, 2020

186

For first time visit and/or new referrals, please contact provider. To obtain Mental Health Information and Services confidentially, please call the 24/7 ACCESS Center Hotline at 1-800-854-7771. (For TDD-TTY, call 1-866-735-2922.) To schedule interpreter services for the hearing impaired (American Sign Language-ASL), please call the 24/7 ACCESS Center Hotline. *MHS refers to individual/group therapy and collateral services. Provider: DMH = Directly-Operated Facility; NGA = Non-Governmental Agency (Contractor); FFS = Fee-for-Service.

Attestation

Provider Number	Provider Name	Attestation Received - YES	Attestation Received - NO
7958	EXODUS RECOVERY, INC		NO
7959	PC MULTICULTURAL FAMILY CENTER		NO
7961	OPCC AND LAMP COMMUNITY, INC		NO
7962	OPCC AND LAMP COMMUNITY, INC		NO
7964	OLIVE CREST		NO
7966	INSTITUTE FOR FAMILY CENTERED SERVICES, DBA CA MENTOR		NO
7967	INSTITUTE FOR FAMILY CENTERED SERVICES, DBA CA MENTOR		NO
7968	AVIVA CHILD AND FAMILY SERVICES		NO
7969	AVIVA CHILD AND FAMILY SERVICES		NO
7970	AVIVA CHILD AND FAMILY SERVICES		NO
7971	SAN FERNANDO VALLEY COMMUNITY MENTAL HEALTH CENTER, INC.,- MILESTONES		NO
7972	INSTITUTE FOR FAMILY CENTERED SERVICES (CA MENTOR)		NO
7973	CHILD AND FAMILY GUIDANCE CENTER		NO
7974	LAUSD LOCKE WELLNESS CENTER		NO
7975	EL CENTRO DE AMISTAD - TOPANGA		NO
7976	SOCIAL MODEL RECOVERY SYSTEM, INC. - OMNI CENTER		NO
7977	ENKI YOUTH AND FAMILY SERVICES-WEST COVINA		NO
7978	DAVID AND MARGARET HOMES		NO
7978	VIP SMIDT TECH HIGH SCHOOL		NO
7979	HARBOR-UCLA K.I.D.S HUB		NO
7980	CHILD AND FAMILY GUIDANCE CENTER		NO
7981	SSG KYCC		NO

Nov 12, 2020

187

For first time visit and/or new referrals, please contact provider. To obtain Mental Health Information and Services confidentially, please call the 24/7 ACCESS Center Hotline at 1-800-854-7771. (For TDD-TTY, call 1-866-735-2922.) To schedule interpreter services for the hearing impaired (American Sign Language-ASL), please call the 24/7 ACCESS Center Hotline. *MHS refers to individual/group therapy and collateral services. Provider: DMH = Directly-Operated Facility; NGA = Non-Governmental Agency (Contractor); FFS = Fee-for-Service.

Attestation

Provider Number	Provider Name	Attestation Received - YES	Attestation Received - NO
7982	AMET		NO
7983	ALMA FAMILY SERVICES		NO
7984	SA 5, CCMET		NO
7985	SSG SILVER		NO
7986	EL CENTRO DEL PUEBLO, INC.	YES	
7987	SA 5,SMMET		NO
7988	GARDENA/HAWTHORNE GHMET		NO
7989	PERSONAL INVOLVEMENT CENTER, INC.		NO
7990	PROTOTYPES OBHS POMONA		NO
7991	SA 3, POMONA PMET		NO
7992	PROTOTYPES OBHS PASADENA		NO
7993	SA 3, MONTEREY PARK MPMET		NO
7994	PROTOTYPES OBHS WELLNESS CENTER		NO
7995	MENS COMMUNITY REINTEGRATION PROGRAM		NO
7996	INSTITUTE FOR FAMILY CENTERED SERVICES, DBA CA MENTOR		NO
7997	MONTEBELLO MMET		NO

Nov 12, 2020

188

For first time visit and/or new referrals, please contact provider. To obtain Mental Health Information and Services confidentially, please call the 24/7 ACCESS Center Hotline at 1-800-854-7771. (For TDD-TTY, call 1-866-735-2922.) To schedule interpreter services for the hearing impaired (American Sign Language-ASL), please call the 24/7 ACCESS Center Hotline. *MHS refers to individual/group therapy and collateral services. Provider: DMH = Directly-Operated Facility; NGA = Non-Governmental Agency (Contractor); FFS = Fee-for-Service.