

Message From Our CEO & President

Dear Friends of Maryvale,

As we rang in the New Year this past January 1, we did so with hearts and minds full of hope and excitement. We were looking forward to moving on from a difficult and trying year, we were looking forward to new beginnings. While 2021 continued to offer challenges, we viewed these as opportunities to move forward and to reinvent ourselves along the way.

When Maryvale leadership made the decision to close our short-term residential therapeutic program (STRTP) in August of 2020, this ended 165 years of residential services for children. Throughout our history, changes like this have not been uncommon. As Los Angeles County's longest-operating children's charity dedicated to serving children, youth and families, we spent 2021 exploring ways to make a greater impact in our community. The beginning stage of our three-year strategic planning process helped us to identify ways to serve more vulnerable individuals with a wider range of services.

This is our opportunity to move forward and put into practice our vision of Maryvale's future – the organization that will continue to serve the needs of the underserved for the next 165 years.

While we have entered into a new era for Maryvale, we remain dedicated to the transformative work we are doing every day. We are proud of the way we make a difference in the greater community. We will continue to offer and expand access to high-quality early education programs and services at our two campuses and mental health outpatient services for children and families in need.

We are pursuing the addition of child and adolescent substance abuse and dual-diagnosis outpatient treatment services to our mental health program.

With a strong history and set of resources for the provision of transitional housing and support, we are committed to offering a continuum of housing solutions for those in our community who are homeless or housing insecure.

"It is with much appreciation that I thank you for your support and invite you to join us as Maryvale moves forward into its next chapter."

While we are exploring exciting options for the path we will take, we are dedicated to writing the next chapter for Maryvale and following the guidance of the Holy Spirit in continuing Maryvale's long and rich legacy of service in Los Angeles.

We look forward to embarking on this new journey. The opportunity for Maryvale to change more lives has never been stronger. It is with much appreciation that I thank you for your support and invite you to join us as Maryvale moves forward into its next chapter.



Steve Gunther, MSW
President & CEO



Maryvale's Mission: With loving and compassionate hearts, we seek to heal, educate, and empower those in need, lifting up one individual, one family, one community at a time.



Maryvale's Vision Statement: Faithful to Catholic Social Teachings and inspired by the compassionate service of the Daughters of Charity, we dedicate ourselves to a world where all God's children – regardless of adversity, beliefs, or background – are valued, accepted and given the opportunity to live fulfilling lives.



Maryvale's Values: We uphold the values of our Vincentian founders:

- Respect
- Compassion
- Advocacy
- Integrity
- Inventiveness
- Excellence
- Inclusivity
- Collaboration



Maryvale's Strategic Priorities

These strategic priorities build on Maryvale's deep history of service. They act as a roadmap for the future by broadening and deepening Maryvale's commitment to provide services to Los Angeles' most underserved people.

i. High-Quality Programs and Services:

Maryvale will continue to offer high-quality programs and services to neighboring communities.

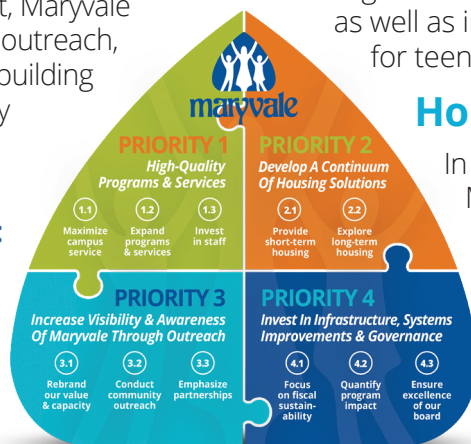
ii. A Continuum of Housing Solutions:

To meet the critical need for shelter and safe housing in Los Angeles, Maryvale will develop a continuum of housing solutions and explore opportunities to establish longer-term housing solutions and services.

iii. Community Outreach: To better reach those that might benefit from its support, Maryvale will implement robust community outreach, and will work to grow its reach by building new partnerships with community leaders, service providers, and regional networks.

iv. Stewardship and Sustainability:

Maryvale will invest in the systems and infrastructures that make its centers thrive and seek new, lasting revenue sources to ensure a financially sound future.



Programs On the Horizon: Maryvale Expands Upon Proven Models of Service



Maryvale Family Housing

Maryvale will revive its legacy of providing housing services to meet the essential needs of single mothers and their children. Families will receive up to six months of housing, complete with individualized care, support in learning job skills, access to early childhood education, and help to transition to a permanent home.



Mental Health & Substance Use Disorder Treatment

For years, Maryvale has cultivated expertise in short-term residential therapeutic approaches to address teens' substance use issues. Our new program will serve our extended community through a multi-level Intensive Outpatient Program, as well as in-home behavioral health services for teens and their families.

Hope Housing for Students

In partnership with **The Shower of Hope**, Maryvale will continue to offer short-term housing to unhoused female college students. Maryvale also offers expertise in mental health and substance abuse treatments for residents that need additional support.

Contact Us Today For A Virtual Tour | (626) 280-6510 | www.maryvale.org

Maryvale adheres to the County of Los Angeles and the CDC Guidelines for Covid-19 protocols.

Maryvale's Core Program Offerings

Early Childhood Education

- Maryvale has two Early Education Centers, Duarte and Rosemead. The Duarte center offers three classrooms for infants and toddlers and six preschool classrooms. Rosemead has four classrooms for infants and toddlers and four preschool classrooms. Both centers provide an enriching variety of learning activities designed to develop a child's skills and lay the foundation for their future success in school and in life. Our versatile curriculum considers the whole child, accounting for various learning styles and interests. We integrate indoor and outdoor activities, and we bring in technology when appropriate.



- Our centers are more than just a place for a child to get an education - we are a stable resource for families in our community. Even throughout the pandemic, our teachers and staff have offered uninterrupted support and care for children and families, despite challenging circumstances. Maryvale provides every child with the same high-quality, deeply personalized care and education.

Case Study: How Maryvale Acts As A Resource for Entire Families

In Spring 2020, John* came to Maryvale seeking care for his daughter Charlotte*. His family was experiencing difficult times as he was recently unemployed. Maryvale was able to enroll Charlotte into the California State Preschool Program and helped John find employment within two weeks of enrolling Charlotte in preschool, and she is thriving.

"Maryvale is like family! We are sad to see our daughter graduate from preschool, but we know she is more than prepared for kindergarten thanks to all her teachers here."

-Jasmine— mother of Cameron, age 5.

Maryvale's Community-Based & Wraparound Mental Health Services

- Maryvale's community-based mental health offerings consider a child's whole experience while working toward a healing path. In our facilities and beyond, we work with an extensive group of community partners. Together, we build a collaborative network of support with and around families who are facing challenges or whose children need extra care.
- In instances of severe difficulty, Maryvale's Wraparound Services build a supportive team of care practitioners, skilled counselors and facilitators around a child and family. The team works together to understand a family's core issues and approach therapeutic plans with thoughtful consideration of the root cause.



Case Study: How Maryvale helps high-risk teens

Teresa*, a 16-year-old female, was referred to Wrap-around Services. Teresa presented high-risk behaviors such as substance abuse, sexualized behaviors, and running away from home. When she was first referred to Maryvale, she had recently been removed from her home, had entered foster care, and was matched with her first foster family. The Wraparound Team provided support with getting tutoring services, guitar lessons, employment, drug education groups at Maryvale, and Marijuana Anonymous support groups. Maryvale is proud to report that Teresa has been sober for three months, and is receiving straight A's.

We Can't Do This Alone.

Maryvale offers crucial services for our community's health, well-being, and education – and our future plans are more ambitious than ever.

Your support is essential to ensure that these vital programs can continue to serve the most vulnerable in our community, our children.

Please help by donating online at [Maryvale.org/support-programs](https://www.maryvale.org/support-programs) or by sending a check in the enclosed envelope. Your contributions to Maryvale are tax-deductible. To learn more about how you can make a difference or to make your donations by phone, please contact Maryvale Director of Development Allyson Simpson at (626) 537-3340 or asimpson@maryvale.org



Commit to Giving: How to Make Your Generosity Count.

- **Make Maryvale Your End-of-Year Donation.** End 2021 by breathing hope into a positive future for children
- **Donate and Maximize Your Tax Deduction.** A gift to Maryvale can be deducted from your 2021 federal income tax return.
 - ~ New COVID relief legislation allows people who take the standard deduction and do not itemize deductions to claim a limited special deduction on their 2021 cash charitable contributions – up to \$300 for individuals or \$600 for couples who file jointly.
 - ~ For those who itemize deductions, you can deduct your charitable cash gift to Maryvale on your 2021 income tax return up to 100% of your adjusted gross income (AGI).
 - ~ Those who are 70 ½ or older and have an IRA can gift directly from the IRA to Maryvale in any amount up to \$100,000. While not tax deductible, it can help reduce income tax on distributions taken from an IRA in 2021.

Please keep these tax benefits in mind as you plan your 2021 year-end charitable giving.

To learn more about the tax-benefits of your charitable giving, please contact Director of Development, Allyson Simpson at (626) 537-3340 or asimpson@maryvale.org.

Rosemead Campus:

7600 East Graves Avenue
Rosemead, CA 91770

Main Office Phone:

(626) 280-6510

Early Education Center Phone:

(626) 537-3311

Duarte Campus:

2502 East Huntington Drive
Duarte, CA 91010

Early Education Center Phone:

(626) 357-1514

Community-Based Services Center Phone:

(626) 263-9133

Connect With Us



Contact Us Today For A Virtual Tour | (626) 280-6510 | www.maryvale.org

Maryvale adheres to the County of Los Angeles and the CDC Guidelines for Covid-19 protocols.