

## 2021 FACT SHEET

# NEW Watershed Program Ashwaubenon Creek & Dutchman Creek



### PARTNERING FOR WATER QUALITY

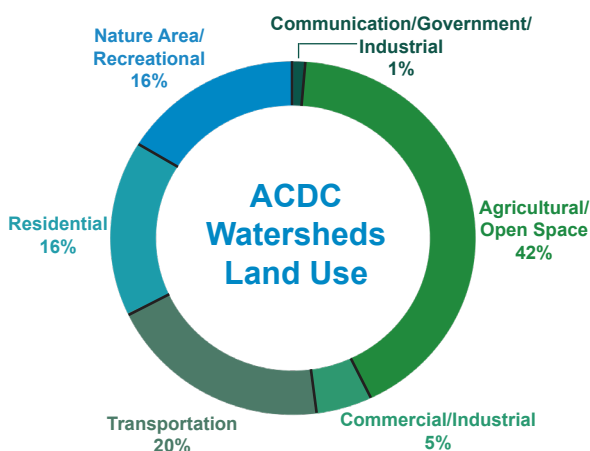
NEW Water, the brand of the Green Bay Metropolitan Sewerage District, launched a new watershed partnership program to achieve permit compliance at a cost-effective approach to achieve greater environmental gain.

Thanks to a grant from the Great Lakes Restoration Initiative, NEW Water began watershed improvement efforts in 2014 with the Silver Creek Pilot Project (Pilot Project). The Pilot Project brought together agricultural landowners, farmers, the land conservation offices in Outagamie and Brown counties, private agronomists, universities and non-governmental entities for a common goal, to improve area water quality. These efforts included collaborations to improve water quality through practices such as increased ground cover and storm water management, while preserving agricultural land uses and reducing sediment and nutrient runoff.



### NEW Watershed Program

With the knowledge and experience gained from the Pilot Project, NEW Water has selected the Ashwaubenon Creek and Dutchman Creek (ACDC) watersheds for implementation of a long-term watershed program as a cost-effective, alternative compliance option for its wastewater discharge permit with the Wisconsin Department of Natural Resources.



### Community Wide Engagement

The ACDC program will also incorporate urban partners and initiatives to achieve even greater water quality improvements.

NEW Water is engaging with municipal partners and stakeholders to identify opportunities for reducing runoff from urban developments and transportation corridors.

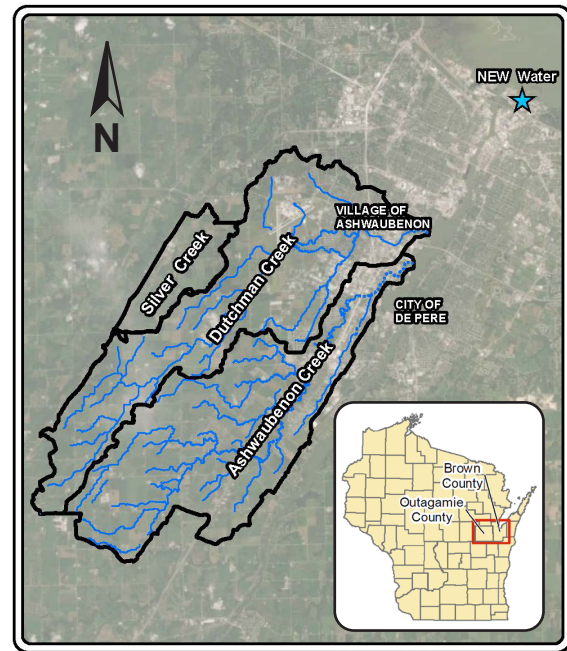
These collaborations create social and economic development improvements such as increased recreational use of the region's waterways.

## Agricultural Collaboration

Collaboration with agricultural landowners and growers is crucial for the Program to achieve water quality goals. By working together through this voluntary program, practices can be selected that work within existing operations to better serve the farmer's goals and improve soil health, runoff, and local water quality.

*"I really like that we have a common goal, we can work together to accomplish something that works. We have a system I can work with now and the Program made that possible. It's nice to have the flexibility to make something new work within my operations."*

- Craig Van Handel, dairy farmer with operations in the ACDC Watersheds



## Water Quality and Biological Monitoring in the Creeks

With the Program's goal of improving the water quality and biological health of Ashwaubenon and Dutchman Creeks, monitoring of the creeks is essential to show how improvements in the watershed affect their health. The Program has begun monitoring water quality, habitat, fish and macro-invertebrates (small "bugs" that live in these creeks and can indicate poor or healthy water quality) throughout the watersheds. By collecting this information now, the Program is setting a baseline to track the progress of nutrient and sediment reduction in the years to come. If you notice team members engaged in monitoring activities in the creek, feel free to ask questions and observe what is taking place.

Changes in creek flow are also important in understanding the health of the watershed. The Program worked with the U.S. Geological Survey to install four stream gages along Ashwaubenon and Dutchman Creeks. These gages provide valuable information on the impact of precipitation and runoff on in-stream water quality.



## Program Activities Planned for 2021

The Program is planned to extend over four wastewater discharge permit terms, or a minimum of 20 years. This year's activities include the following:

- Monitoring both Silver Creek and ACDC for biological health and water quality.
- Meet with interested landowners and growers about implementing conservation practices.
- Review resource concern prioritization and start implementing best management practices.
- Utilize innovative GIS tools to track conservation opportunities, newly installed practices, and verification needs.

## Long-Term Activities Beyond 2021

Beyond 2021, the Program will continue to work with partners and stakeholders interested in implementing new and/or larger scale regional practices to improve water quality. Ongoing water quality monitoring will also take place. With long-term watershed health in mind, this Program will require an adaptive approach to conservation and runoff reduction.

## Contact Information

As the Program continues, look for annual ACDC watershed updates: [www.newwater.us](http://www.newwater.us)

- Erin Houghton: [ehoughton@newwater.us](mailto:ehoughton@newwater.us) (920) 438-1071
- Jeff Smudde: [jsmudde@newwater.us](mailto:jsmudde@newwater.us) (920) 438-1040
- Nikki Raimer: [nikki.raimer@jacobs.com](mailto:nikki.raimer@jacobs.com) (920) 915-6106