

NEW Watershed Program

Ashwaubenon Creek & Dutchman Creek

2020 FACT SHEET



PARTNERING FOR WATER QUALITY

NEW Water, the brand of the Green Bay Metropolitan Sewerage District, launched a new watershed partnership program to improve area streams and habitat, and preserve sustainable agriculture.

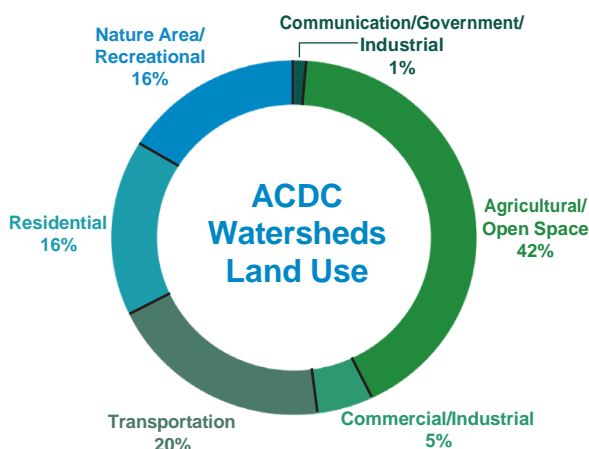
NEW Water began watershed improvement efforts in 2014 with the Silver Creek Pilot Project (Pilot Project). The project brought together agricultural landowners and growers (farmers), the land conservation offices in Outagamie and Brown counties, private agronomists, universities and non-governmental entities.

The Pilot Project proved to be successful in showing that NEW Water and the stakeholders can collaborate to improve water quality through practices such as increased ground cover and storm water management, while preserving agricultural land uses and reducing sediment and nutrient runoff.



NEW Watershed Program

With the knowledge and experience gained from the Pilot Project, NEW Water has selected the Ashwaubenon Creek and Dutchman Creek (ACDC) watersheds for implementation of a long-term watershed program that will be included in NEW Water's wastewater discharge permit. The **NEW Watershed Program** will allow NEW Water to meet Wisconsin Department of Natural Resources permit requirements through water quality improvements in the watersheds at a lower cost to the community compared to other options.



Non-Agricultural Collaboration

While the focus of the Silver Creek Pilot Project was on agriculture, it also demonstrated the need for future efforts to include additional partners to achieve even greater water quality improvements.

NEW Water is reaching out to municipal partners such as the counties, cities, villages and towns to identify opportunities for reducing runoff from developments, urban areas and transportation corridors. Green Bay Austin Straubel International Airport, which has a significant amount of land in the Dutchman Creek watershed, will also be consulted about opportunities to work together to improve water quality and land use impacts.

These collaborations are seen as an opportunity to create social and economic development improvements such as increased recreational use of the region's waterways.

Agricultural Collaboration

Collaboration with agricultural landowners and growers is crucial for the Program to achieve water quality goals. The Pilot Project demonstrated the importance of working with growers and agronomists to identify conservation opportunities that can be implemented within the growers' operations. One Pilot Project grower sums up his experience with the Silver Creek Pilot Project:

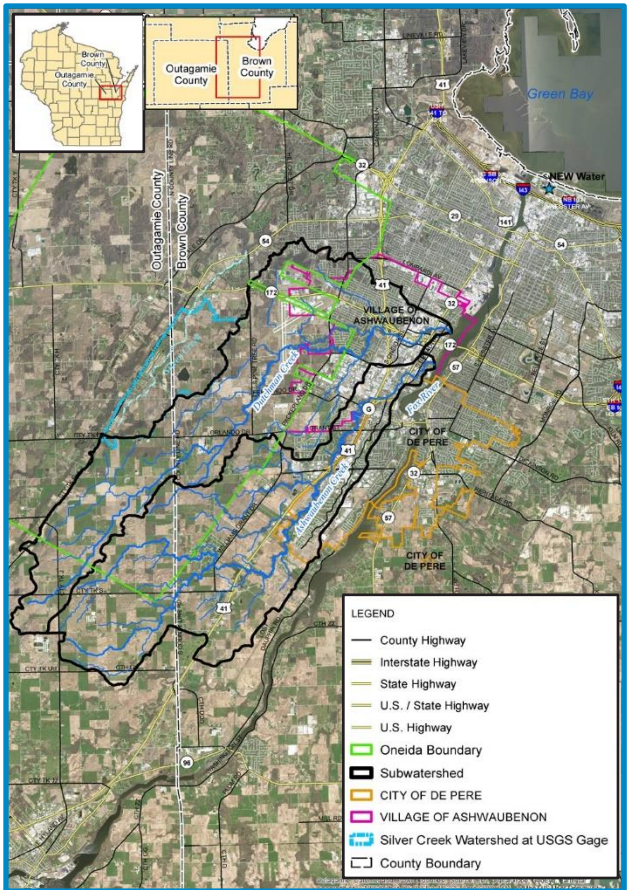
“ The Pilot Project team pointed out opportunities that we hadn't considered before or didn't have the resources to implement on our own. They brought ideas to help improve our field operations while concurrently aiding us in our goal of reducing erosion and improving water quality. We look forward to continuing the successes in Silver Creek and working with the Program team in Ashwaubenon and Dutchman creek watersheds. ”

-- Dan Diederich (Diederich Farm), dairy farmer with operations in Silver Creek and ACDC Watersheds

Water Quality and Biological Monitoring in the Creeks

With the Program's goal of improving the water quality and biological health of Ashwaubenon and Dutchman Creeks, monitoring of the creeks is essential to show how improvements in the watershed affect their health. The Program has begun monitoring water quality, habitat, fish and macro-invertebrates (small “bugs” that live in these creeks and can indicate poor or healthy water quality) throughout the watersheds. By collecting this information now, the Program is setting a baseline to track the progress of reducing nutrient and sediment runoff in the watersheds. If you notice team members engaged in monitoring activities in the creek, feel free to ask questions and observe what is taking place.

Changes in creek flow are also important in understanding the health of the watershed. The Program worked with the U.S. Geological Survey to install four flow gauges along Ashwaubenon and Dutchman Creeks. These gauges provide valuable information on the impact of precipitation and runoff on in-stream water quality.



Program Activities Planned for 2020

The initial phase of the **NEW Watershed Program** includes introduction of it to key stakeholders while collecting baseline information. The Program is planned to extend over four wastewater discharge permit terms, or a minimum of 20 years. Initial activities include:

- 🔹 Inventorying the creeks for conservation opportunities along the corridors.
- 🔹 Monitoring both Silver Creek and ACDC for biological health and water quality.
- 🔹 Developing tools to visualize and demonstrate conservation opportunities and support planning with stakeholders.
- 🔹 Identifying interested landowners and growers for implementing innovative conservation practices.

Long Term Activities Beyond 2020

Beyond 2020, the Program will continue to work with partners and stakeholders interested in implementing new and/or larger scale regional practices to improve water quality. Ongoing water quality monitoring will also take place. With long-term watershed health in mind, this Program will require an adaptive approach to conservation and runoff reduction.

Additional Information

As the Program continues, look for annual updates on what is happening in the Ashwaubenon Creek and Dutchman Creek watersheds:

- Visit www.newwater.us
- Contact Erin Houghton: ehoughton@newwater.us 920-438-1071
- Contact Jeff Smudde: jsmudde@newwater.us 920-438-1040