

Welcome to NEW Water Quarterly Update



June 4, 2015

NEW Water
The brand of the Green Bay
Metropolitan Sewerage District 



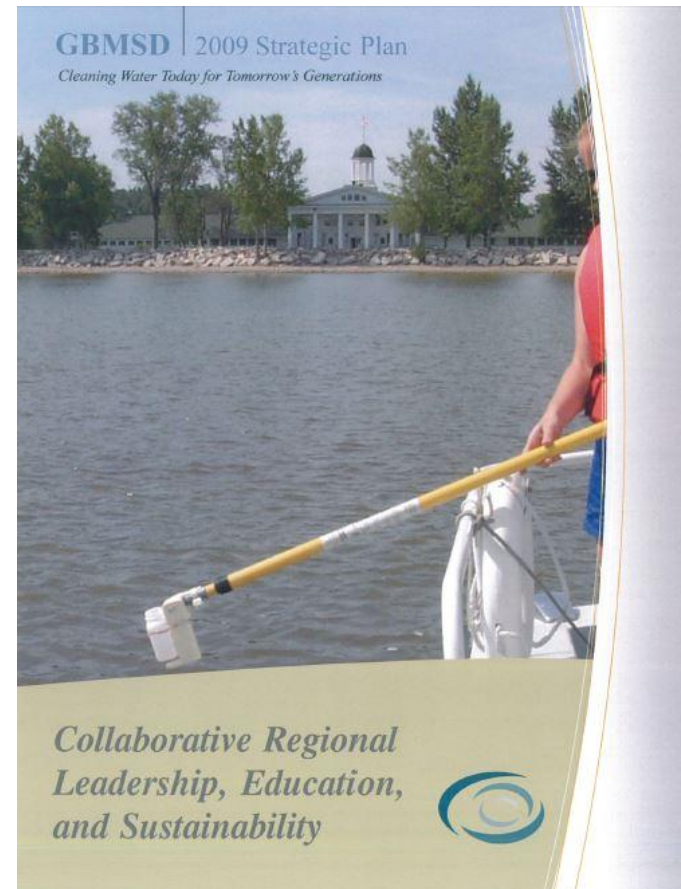
Overview of Today's Update

- Welcome! Second quarterly update: Combined R2E2 with Update Meeting
- Strategic Planning: 2015
- Budgeting Process Underway
- R2E2 Update
- Interceptor Master Plan Update
- Adaptive Management
- Sustainability Initiatives
- WPDES Permit
- For Municipal Customers: CMOM workshop



Strategic Planning Underway

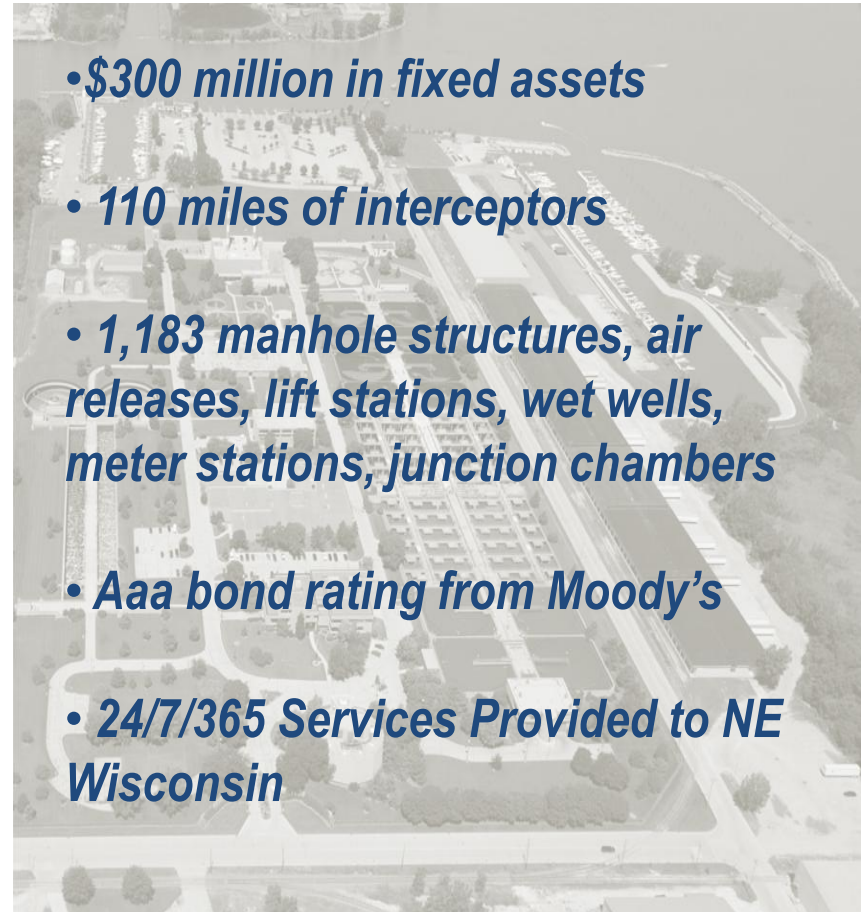
- Last plan 2009
- Convening leadership team and Commission in early June to strategize
- External survey: Stakeholder feedback is vital to success
- What is next for NEW Water over the next 3-5 years
- Updated plan in October 2015





NEW Water Budget

- 2014 financial audit complete
- 2016 budget currently being developed
- Budgeting begins in March; budget runs off calendar year January – December
- First budget workshop with Commission in August
- 2016 budget will be approved in early December





Resource Recovery & Electrical Energy (R2E2)

- Contract 33 Update
- Contract 34 Timeline
- Contract 34 Preliminary Bid Results
- Contract 35 Summary
- Budget Summary





R2E2 Contract 33 Update

- New Switchgear Building in service
 - Current plant power coming from New Switchgear Building
- Old Primary Substation has been demolished
- New Storage Building turned over
- Achieved Substantial Completion
- Punch list work ongoing





R2E2 Contract 34 Timeline

- April 6 – Went out for bid
- June 3 – Bids were opened at 2:00 pm
- June 24 – Commission Meeting for approval of recommended contractor
- Late July – Start mobilization & excavation
- Major Milestone Dates
 - October 2016 – Septage Receiving
 - January 2018 – Solids Facility
 - March 2018 – Digestion
 - April 2018 – Substantial Completion
 - August 2018 – Final Completion





R2E2 Contract 34 Preliminary Bid Results

These bid results are preliminary and require extensive review prior to determination of lowest, responsible, responsive bidder.

Prime Contractor	Mechanical Subcontractor	Electrical Subcontractor	Lump Sum Bid Amount
CD Smith	JF Ahern	Faith	\$130,900,000
Miron	JF Ahern	Faith	\$133,722,663
Boldt	JF Ahern	Faith	\$146,900,000
Engineer's Estimate			\$121,950,000



R2E2 Future Contract 35

- Demolition of existing Solids Building
- Late 2018/Early 2019
- Approximately one year to complete

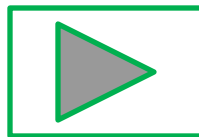
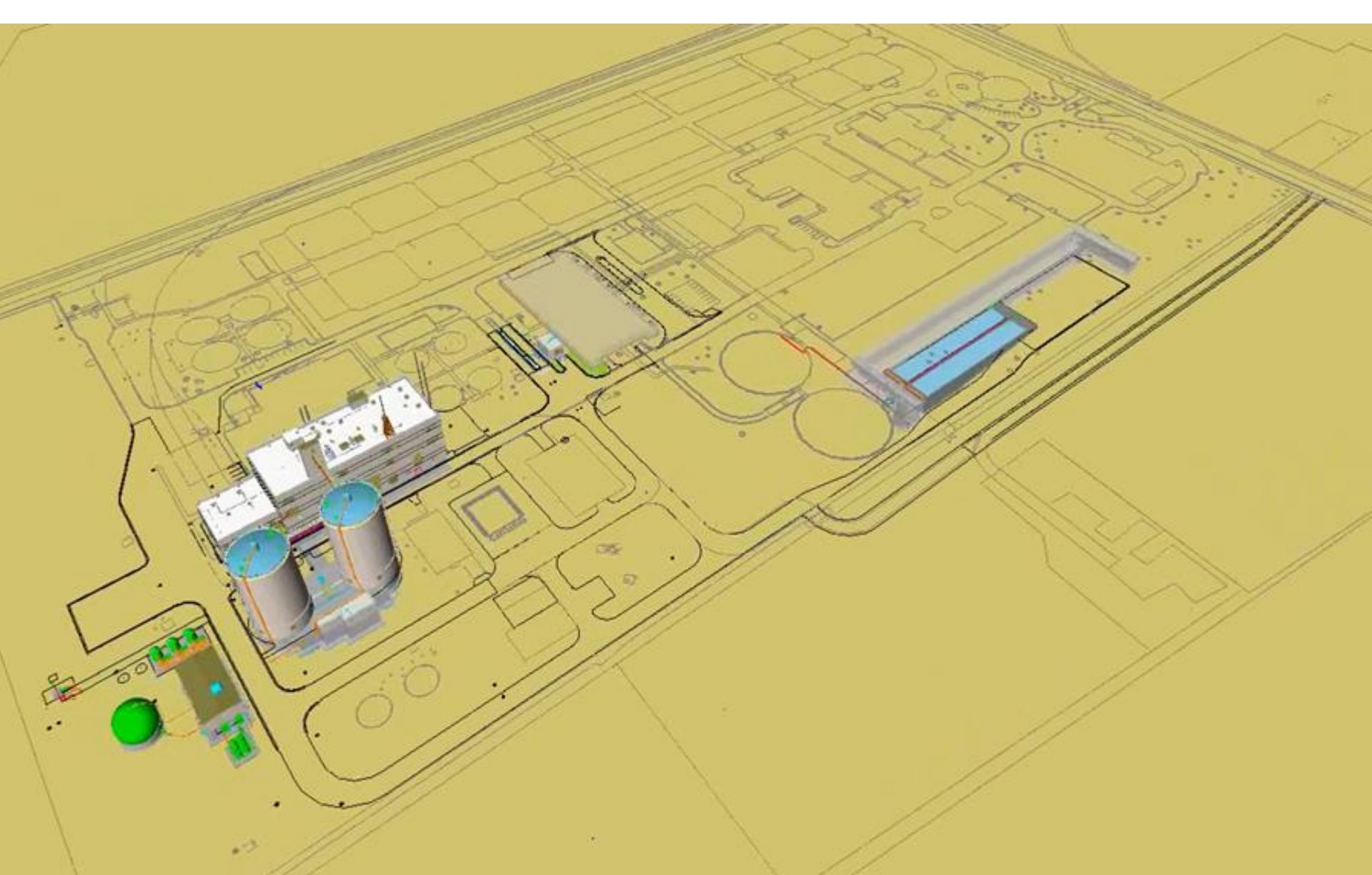




R2E2 Budget Summary

Updated capital cost estimate: \$169,000,000







Interceptor System Master Plan Update

- Purpose and Objectives
 - To prepare an Interceptor System Master Plan that enables NEW Water to plan for and meet its customers' desired service levels at an acceptable level of risk and at the lowest lifecycle cost.
- Sanitary Sewer Interceptor System
 - 78 miles of gravity sewer
 - 25 miles of force main
 - 13 lift stations
 - 29 permanent metering / sampling stations



Interceptor System Master Plan Update

- Project began in May 2014 and is scheduled to be completed in early 2016.
- Project Team
 - Consultant is Donohue & Associates
 - NEW Water Project Team
 - Lisa Sarau, Nathan Qualls, Bill Angoli, Rob Reinhart, Brian Vander Loop and Matt Schmidt



Interceptor System Master Plan Update

- Phase 1 Tasks

- Regulatory Review
- Climate Change Review
- Review of Existing Owner Agreements
- Condition Assessment of Existing System
- Review of Existing Interceptor Database and Selection of Software for Hydraulic Modeling
- Development of a Flow Monitoring Plan

COMPLETE



Interceptor System Master Plan Update

- Phase 2 Tasks
 - Implementation of Flow Monitoring Plan
 - Inflow and Infiltration Analysis
 - Hydraulic Modeling of the Interceptor System
 - Development of 20-Year Interceptor Capital Improvement Plan
- Stakeholder Advisory Group & Customer Communication
 - Form prior to CIP development process



Adaptive Management: Silver Creek

Progress:

Building awareness of \$1 billion dollar Phosphorus cost

Coordination with Partners

Water quality monitoring

Soil testing

Field walks to identify conservation needs 50%

Conservation negotiations with landowners

Grants:

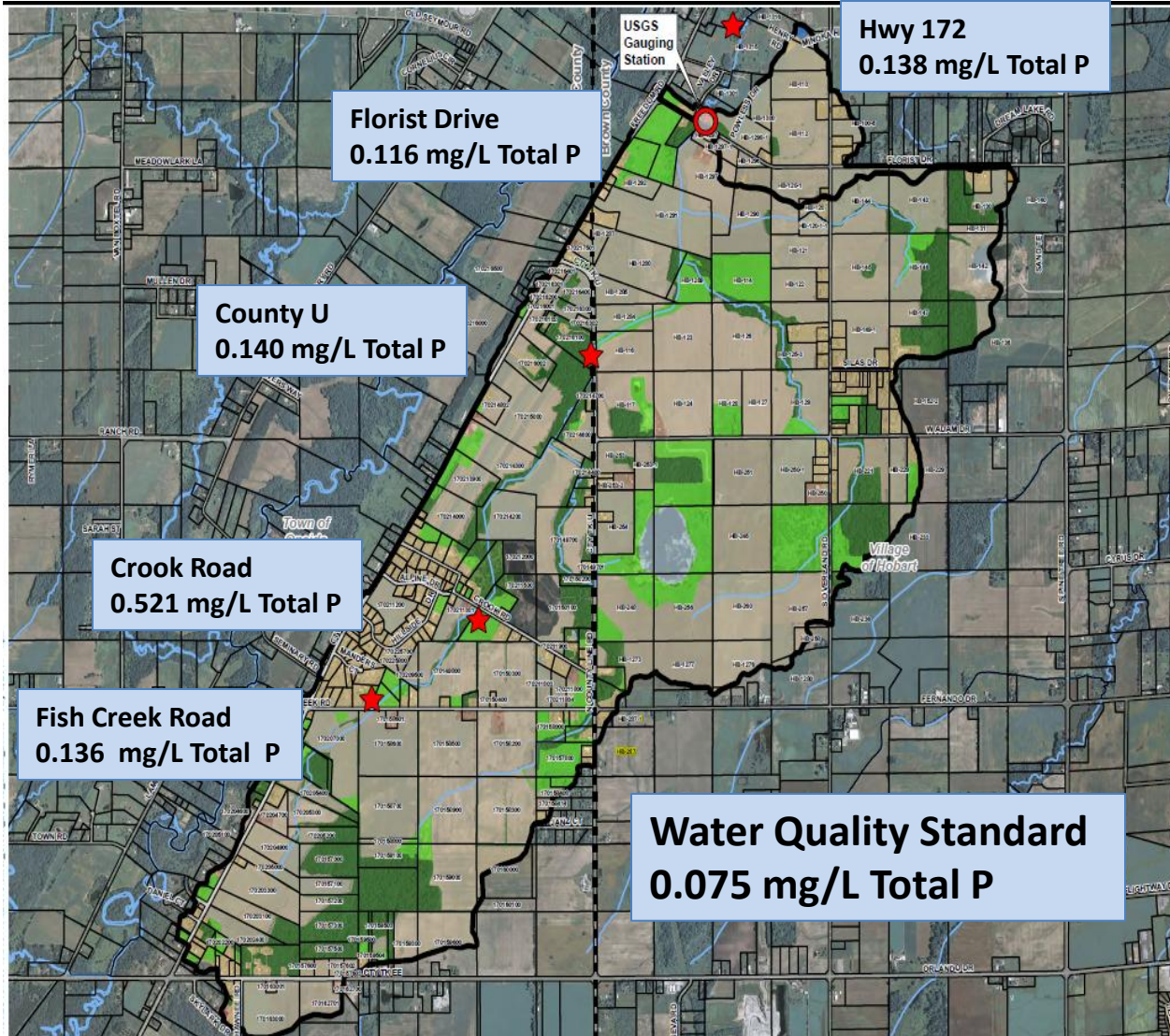
Great Lakes Restoration Initiative - \$1.68 million (5 yrs)

Natural Resources Damage Assessment - \$100,000

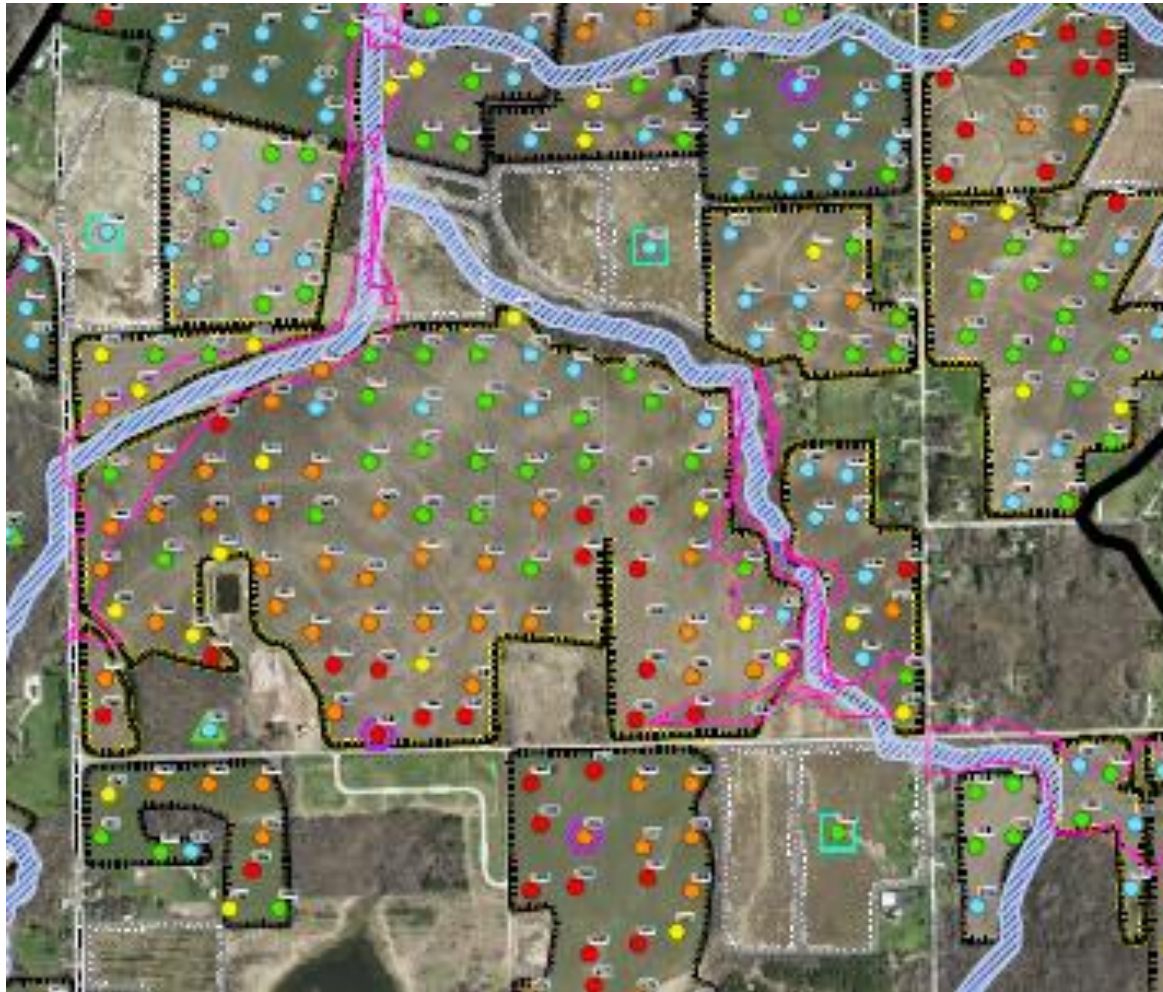
Ducks Unlimited- \$140,000



Water Quality Monitoring: 2014 Season Ave.



Silver Creek soil sampling

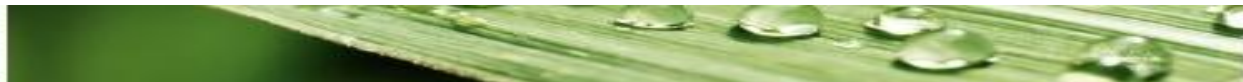


LEGEND

Sample Point

Fall 2014, Lab Results for P (ppm)

- 3 - 15
- 16 - 30
- 31 - 50
- 51 - 100
- 101 - 500



Next Steps

- Field walks completed 2015.
- SNAP Plus (Soil nutrient application planner) modeling.
- Soil and Water Assessment Tool (SWAT) modeling (USDA) - watershed basin model.
- Prioritization of best management practices.
- Begin/continue implementation of BMP's.



Silver Creek Implementation



Planting up to edge of stream, no buffer,
no conservation tillage.



Conservation tillage 2015.



Thanks to Grants: *Silver Creek Kids' Monitoring Project*

- Great Lakes Restoration Initiative grant
- Oneida High School and Bay Port High School
- Students had kick-off event in May
- Educational program is helping to create watershed champions



Sustainability: Trees



Sustainability: Permeable Pavement

- Permeable pavement helps with urban runoff
- NEW Water is looking into this for its own facility
- NEW Water will host a presentation on June 23
- *Contact Bill Hafs if you'd like to attend*





WPDES Permit Update

- Draft agreement with DNR on WPDES permit challenge
- Incorporate Adaptive Management for suspended solids, similar to phosphorus
- Will lead to revised and re-issued permit
- Revised permit expected in fall of 2015

DNR Sanitary Sewer Overflow Rule

- Wisconsin Department of Natural Resources new rule went into effect August 2013
- All permit holders – including municipalities - are required to submit a Capacity, Management, Operations and Maintenance Plan (CMOM) by August 1st, 2016
- Workshop entitled “*The Basics to Comply with the New DNR SSO Rule*” is being held June 16 in Clintonville
- To register, contact Joan Hawley at 414-232-1520 or joan@superior-eng.com
- *Registration form is on NEW Water’s website*





Thank you for coming!
Questions/Comments?

Tom Sigmund, Executive Director
tsigmund@newwater.us
(920) 438-1095

Please subscribe to our e-newsletter and follow us on social media



www.newwater.us

