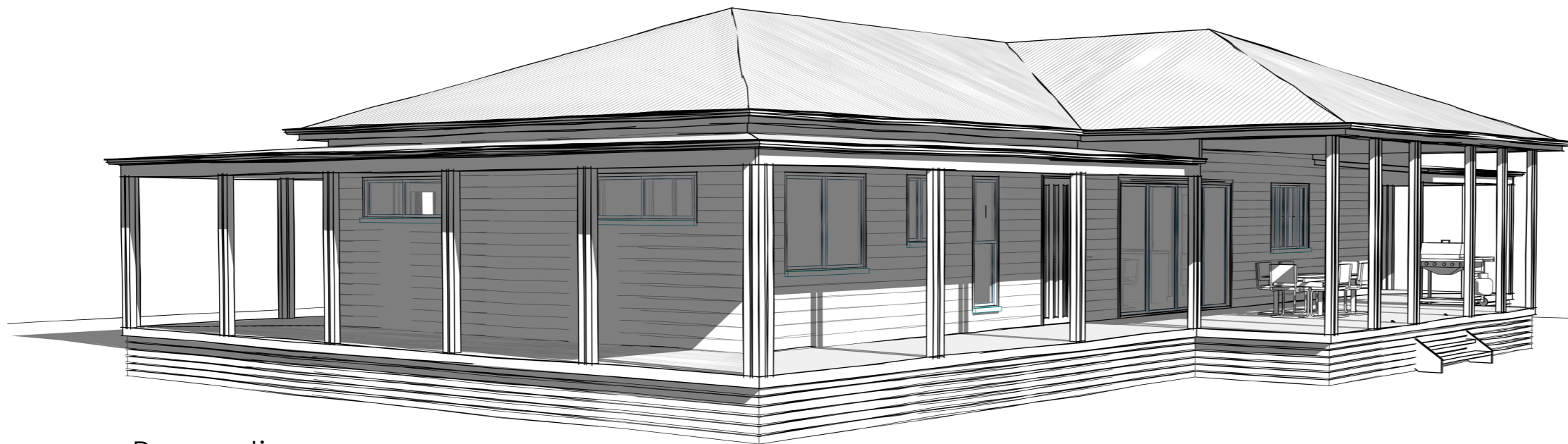
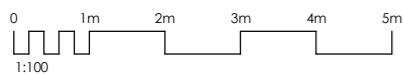
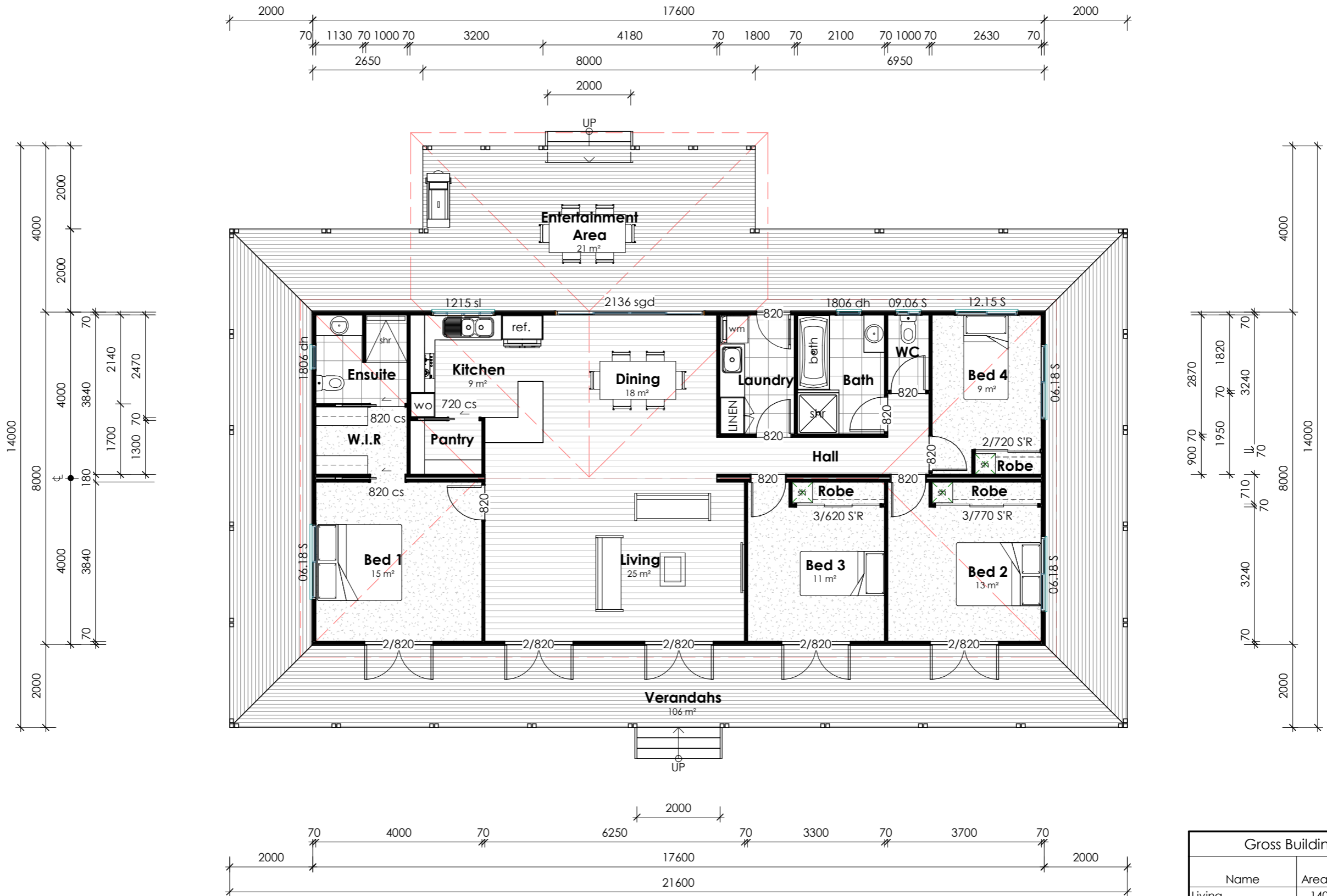


Perspective  
Front View



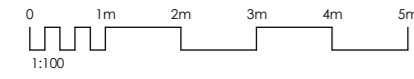
Perspective  
Rear View





Plan  
Floor Plan 1 : 100

Gross Building Area		
Name	Area (m <sup>2</sup> )	Squares (SQ)
Living	140.8 m <sup>2</sup>	15.15
Verandah	106.4 m <sup>2</sup>	11.45
Entertainment Area	21.6 m <sup>2</sup>	2.32
<b>Grand total</b>	<b>268.8 m<sup>2</sup></b>	<b>28.93</b>



Active Construction Group Pty Ltd Trading as Westbuilt Homes  
 Postal: PO Box 663, Warwick QLD 4370  
 Head Office & Factory: 38-48 Project Street Warwick QLD 4370  
 P | 1800 688 044 (FREE CALL)  
 P | (07) 4661 8410 F: (07) 4661 8433  
 E | sales@westbuilt.net.au  
 W | www.westbuilt.net.au

ABN: 40 165 638 988 ACN: 165 638 988  
 Q.B.C.C. Licence QLD: 12 163 85

# Glenvale MK 3 Federation