



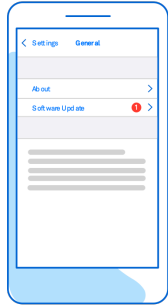
Telstra Enterprise Mobile Protect

Powered by Wandera

Increased productivity, Decreased risk



The risks lurking outside the enterprise perimeter



Device Misconfigurations

28%

of organisations don't enforce operating system upgrades

Poor device security hygiene puts apps & user data at risk



Network Eavesdropping

81%

of workers use public Wi-Fi, even if it is prohibited

Business data can be exposed by network-based protocol attacks



Phishing Attacks & Risky Downloads

90%

of data breaches begin with a phish

Phishing is the #1 mobile threat

Telstra Enterprise Mobile Protect

Powered by Wandera

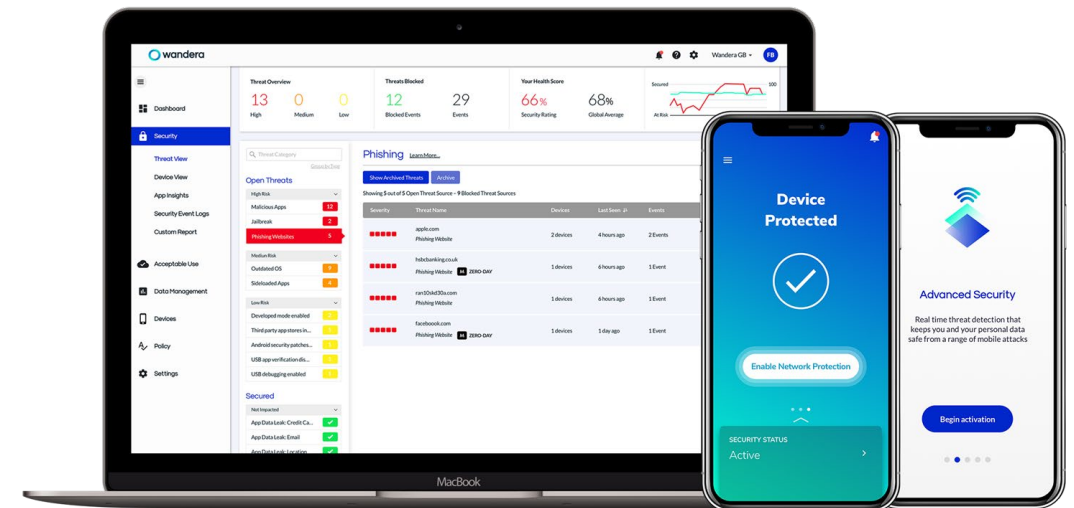


What is it?

Telstra Enterprise Mobile Protect is powered by Wandera and specifically designed for iOS devices on Telstra's mobile network.

Telstra Enterprise Mobile Protect combines the power of the iOS platform with the additional security of Wandera, designed to help keep employees personal and corporate information secure while also delivering a best-in-class user experience, allowing workers to focus on being productive.

We've bundled Wandera Mobile Threat Defence & Wandera Content Filtering licences to give our iOS customer's protection against the most comprehensive set of external threats, reliable access to business applications, delivered with a first-class user experience.



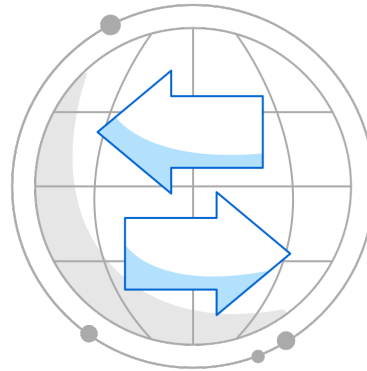
Securing remote work requires a layered approach



iOS is the most secure platform

Wandera detects misconfigurations

- Ensures OS is up to date and passcode is active
- Monitors for risky profiles
- Checks for unsafe apps



Defend the Network

Wandera protects application data

- Scans wi-fi hotspots
- Prevents connection interception
- Secures sensitive data transfers

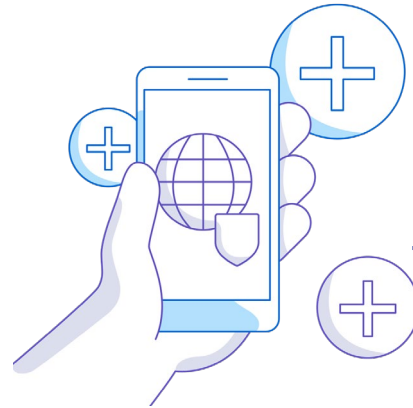


Prevent Usage Risks

Wandera blocks risky content

- Blocks zero-day phishing
- Protects and filters web browsing
- Stops sensitive data leaks

Comprehensive security built for iOS



On-device Defense

Wandera App

- Managed devices: Automated deployment
- Unmanaged devices: Self-enrolment via SSO
- Real-time alerts
- Consumer friendly design

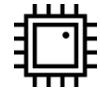


In-Network Protection

Wandera Security Cloud

- Real-time threat prevention
- Threat intelligence with leading efficacy
- Enhanced privacy protection
- Flexible tech stack with integration support





425M

Sensors



90M

Mobile Apps



75M

Unique Domains



20M

Threats Blocked
Annually

Powered by
**MI:RIAM Advanced
Threat Intelligence
Engine**

- › The most comprehensive threat intelligence
- › Always up-to-date
- › Advanced protection against zero-day attacks

Native Integrations



Workspace ONE



Deploy

- Seamless remote install
- Tamper proofing for supervised devices
- Single sign-on for BYOD

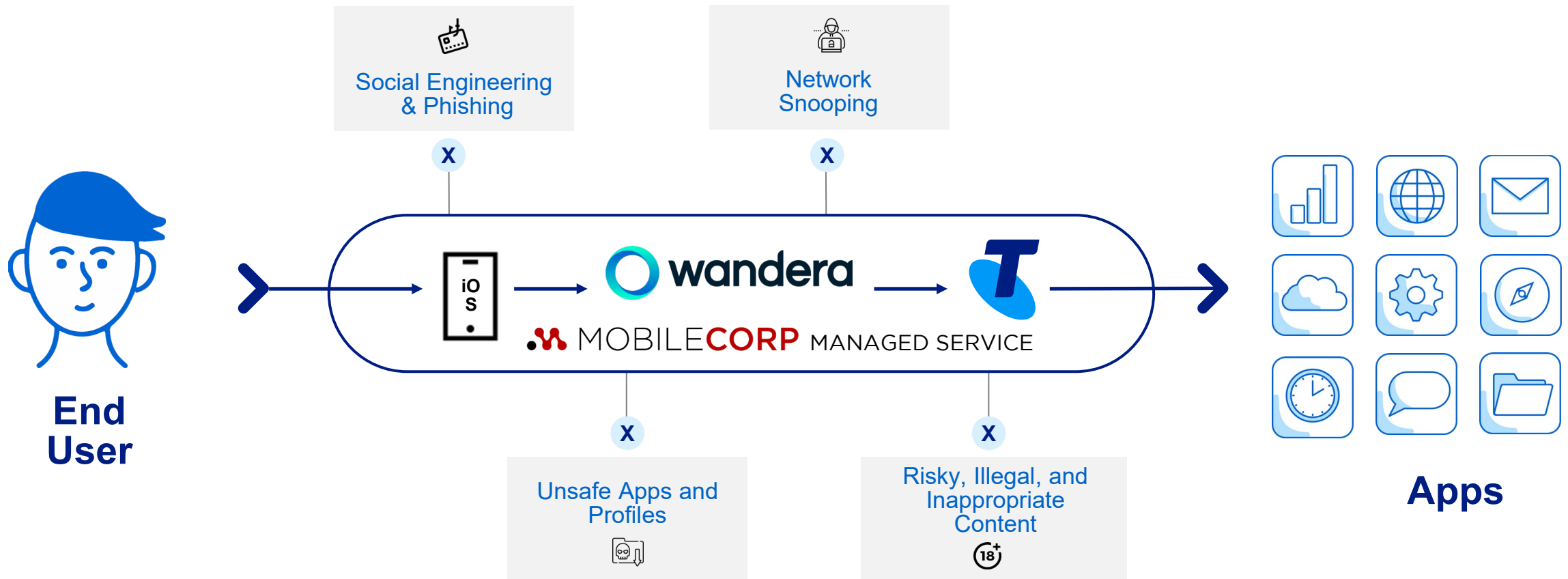
Sync

- Automated lifecycle management
- Group and policy mapping
- Custom user attributes

Protect

- Context-aware Conditional Access
- Extensive APIs and data export options
- Security orchestration

End-to-end protection with best-in-class technologies



MobileCorp Managed Service



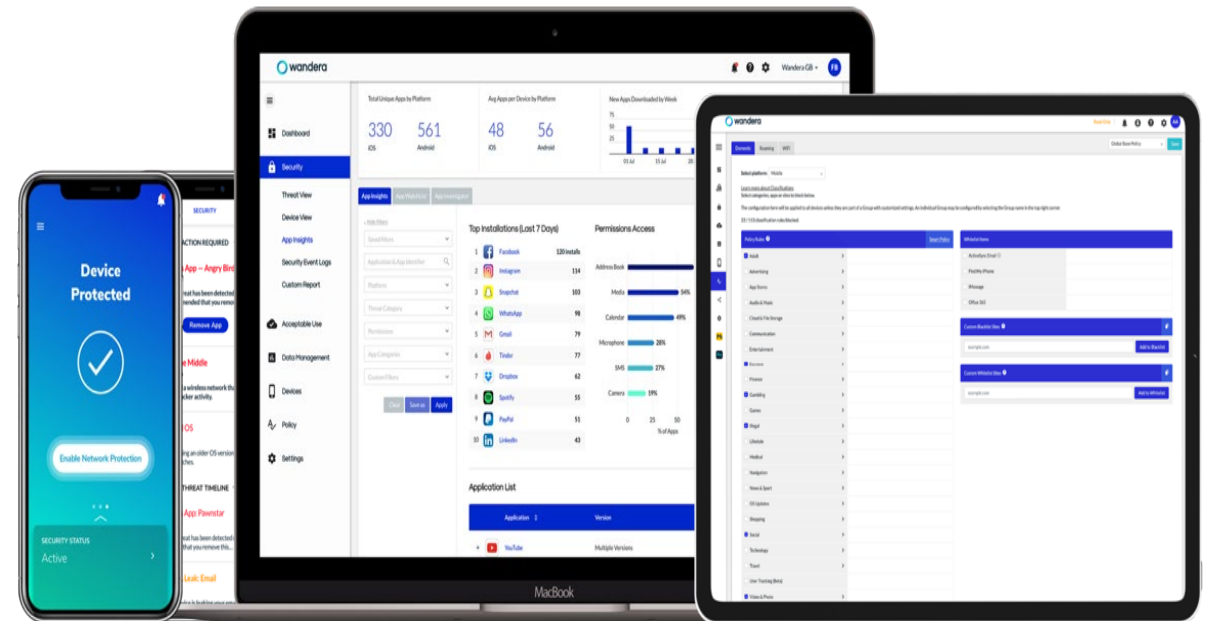
MobileCorp is both a Telstra Mobility partner and a Wandera partner. We leverage our knowledge and experience to assist customers to make the most of Telstra's promotional offer on Wandera licensing through

- licensing procurement
- Wandera instance build & migration
- integration with UEM environments
- integration with identity and access management (IAM) solutions and single sign-on (SSO)

MobileCorp also offers an ongoing managed service to

- Monitor and respond to real time alerts
- Manage end users
- Report on threats, vulnerabilities, compliance and data usage

Contact: 1800 243 252 or info@mobilecorp.com.au



Zero Trust VPN add on

Secure remote access for the modern enterprise



Wandera Private Access

- Zero Trust security policy
- 100% Cloud,
- Identity centric (SSO)
- Super fast, near zero latency
- Supports any device
- Support for BYOD/contractors

4x Faster than
traditional VPN