

Enhanced Enterprise Wireless



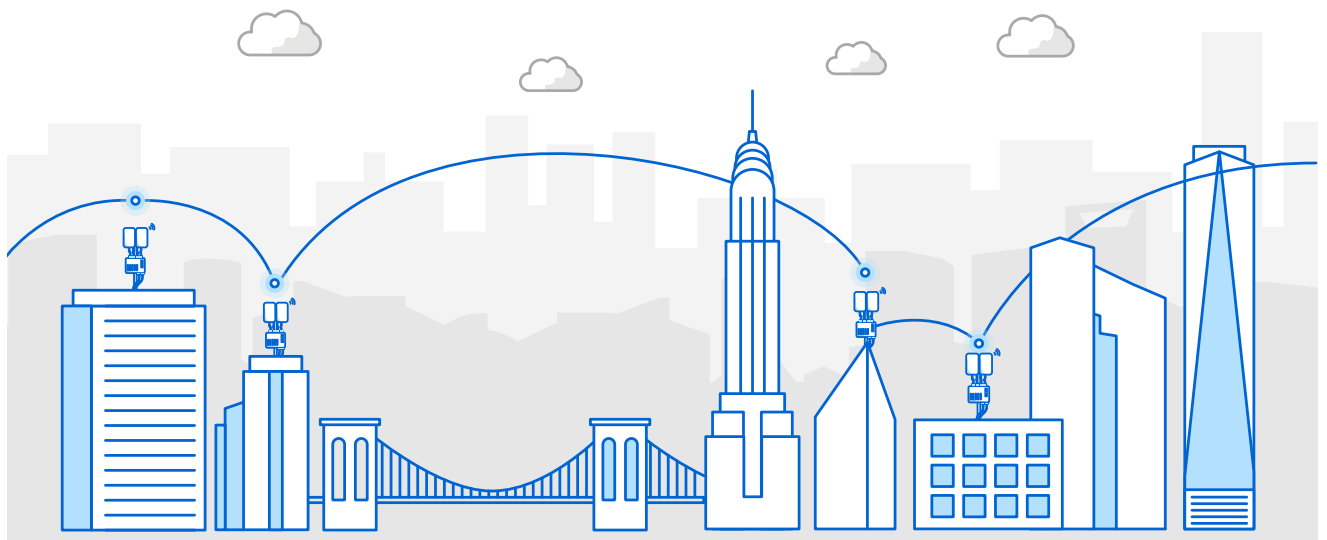
t. 1800 243 252 | 02 9381 9999
e. info@mobilecorp.com.au



Platinum Partner
Mobility



Platinum Partner
Services



Overview

Guaranteeing network availability on your Enhanced Enterprise Wireless connectivity, so you can get on with business.

Enterprise Wireless provides business grade fixed wireless connection to your business sites. And now with Enhanced Enterprise Wireless, we have added service level agreements and managed services allowing you to connect to dedicated enhanced

infrastructure, so that your business can stay connected with confidence.

Get guaranteed uptime on your connectivity, managed service installation, maintenance and monitoring by enhancing your Enterprise Wireless service to get the right connectivity for you and your workforce.

Key Features



Network Availability Service Level

Get network availability service level agreements to help secure business continuity in selected installed sites.



Monthly SLA Reporting

Get access to reporting which will provide monthly SLA performance of each Enhanced Enterprise Wireless service.



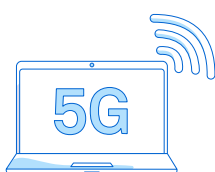
Rapid Deployment

Get up and running in approximately 4 weeks by deploying enhanced enterprise wireless allowing businesses to ramp up in minimal time.



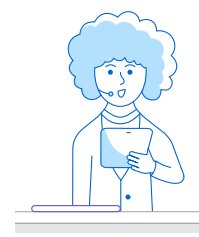
Multiple Deployment Scenarios

With support for a multitude of different deployment options, Enhanced Enterprise Wireless can support your different business needs.



5G Ready

Telstra 5G now covers 75% of the Australian population.



Managed Services

Services includes Site Survey Antenna installation, Cloud Management and pro-active monitoring.

Benefits



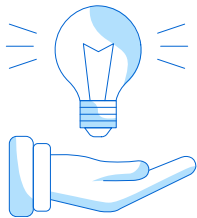
Improve existing wireless connectivity

Improve your wireless connectivity to fixed locations with high performance and a guaranteed 99.9% uptime.



Monthly performance reporting

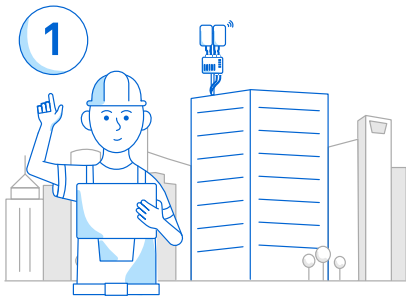
Get monthly reporting on SLA performance to keep track of your connectivity.



All in one solution

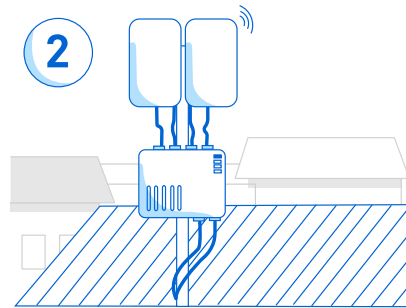
Network connectivity with rapid activation and visibility around your network performance.

How it works



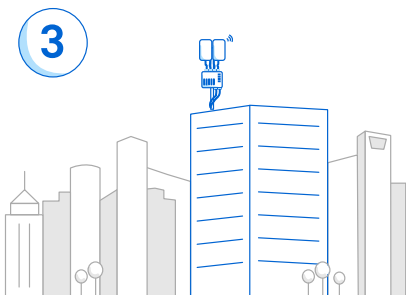
1 Get a service qualification completed for your site

We will help you determine your site eligibility through a service qualification.



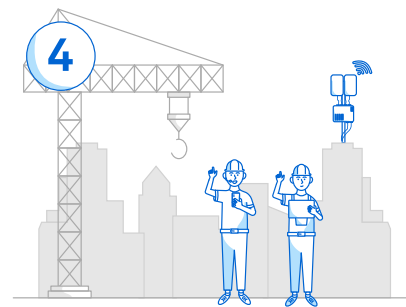
2 Install a fixed wireless antenna

We will get your site installed and ensure that you have the right connectivity for your business requirements.



3 Connect to Telstra's 5G Network

You'll connect to Australia's largest 5G network.



4 Get up and running

Utilise partner managed services and reporting portals to monitor monthly SLA performance for your service.

Why Telstra



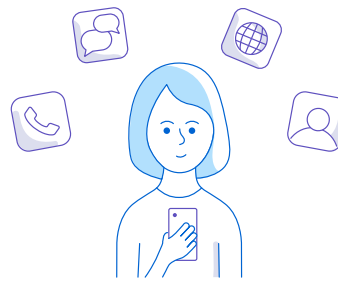
We know Technology

We are the largest Australian owned technology services organisation, bringing purpose to technology for our customers.



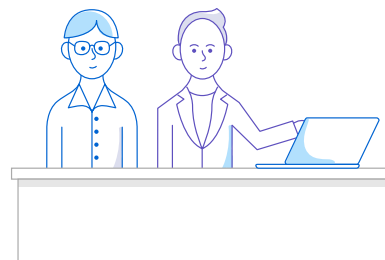
5G Network Coverage

Telstra 5G now covers 75% of the Australian population.



A range of scalable solutions

Choose the right mobility solution for your unique needs from a variety of devices, plans, managed services and more – all available on our local and national networks.



Supported by local accredited mobility partners

With Telstra, you get access to Australia's most reliable network, supported by Australia's best providers. With over 400 partners local globally, we will work with you to create the end-to-end solution you need.

Enhanced Enterprise Wireless (EEW): Available to eligible Telstra Enterprise customers who satisfy on-premise eligibility criteria and service qualification.

Network SLA: Enhanced Enterprise Wireless (EEW) guarantees 99.9% Network Availability to customers connected to Enterprise Wireless services at their eligible Site. Availability is calculated each month based on the number of minutes the EEW service is Unavailable (cells within both Primary and Secondary base stations are offline). If we don't meet the SLA in any given month, we will apply a credit to your bill. Exclusions to the Network Availability SLA are set out in your Digital Services Agreement (or other agreement with us). Network SLA's do not apply to speeds.

Connect your business quickly and work with guaranteed network availability on a wireless solution you can trust.

Let us help you connect with an all in one solution that provides the reliable connectivity and management your business needs. Available in selected 5G coverage areas.

Speak to your Telstra Sales Representative.

Request call back.

Visit <https://tel.st/EnhancedEnterpriseWireless> for more information

