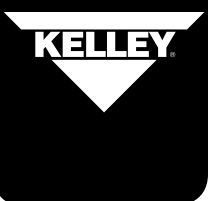


# L-PAD STANDARD DOCK SEAL SPECIFICATIONS SERIES



## Design Highlights

- L-shaped sides compress around side of trailer to create a seal providing full width trailer access
- Provides positive seal between internal and external environments
- Endurance-tested foam core is continuously bonded to frame surface with flexible, nonflammable adhesive
- Wide selection of coated fabrics provide maximum durability
- Highly resilient, open-celled polyurethane foam compresses easily to extend seal life
- Roll-formed galvanized steel framing reduces pressure on building wall
- All pads are vented for air and moisture release
- Full length yellow stripes guide
- Heavy-duty, galvanized steel mounting brackets included

## Project Information

Job Name \_\_\_\_\_

Address \_\_\_\_\_

General Contractor \_\_\_\_\_

Distributor \_\_\_\_\_

Quantity \_\_\_\_\_

## Certified For Construction

By \_\_\_\_\_

Company \_\_\_\_\_

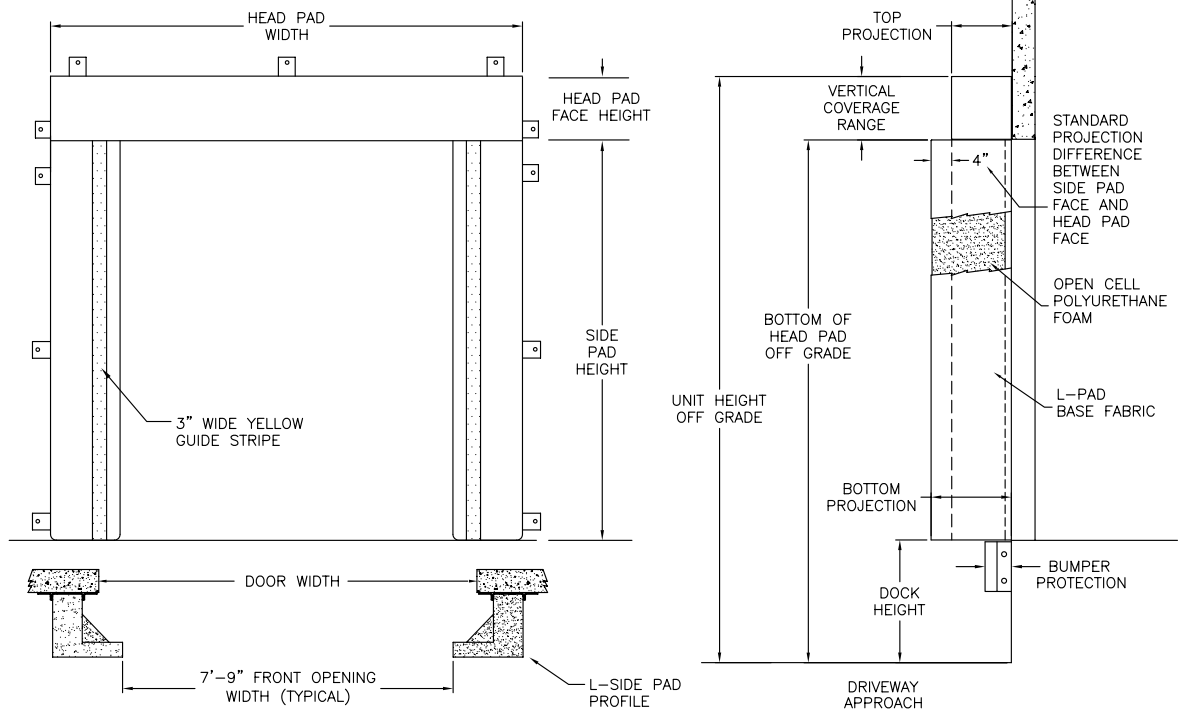
Address \_\_\_\_\_

Date \_\_\_\_\_



# L-PAD STANDARD DOCK SEAL

## DSSSL SERIES SPECIFICATIONS



**QUANTITY** \_\_\_\_\_

**Model**  DSSL  Flame Retardant Fabric & Foam  Flame Retardant Fabric Only

**Framing** Roll-Formed Galvanized Steel

**Head Pad Width**  129" for 9'3" door widths or smaller  135" for 9'4" to 10'0" door widths

**Head Pad Bevel**  12/12  18/18  24/24  12/15  12/18  Wearmaster Head Pad

**Drop Curtain**  None  12"  Hook-Loop

**Side Pad Height** \_\_\_\_\_ (Total Unit Height)

**Side Pad Face**  18" for 9'3" door widths or smaller  21" for 9'4" to 10'0" door widths

**Base Material**  22 oz. Vinyl  40 oz. Vinyl  16 oz. CSM  40 oz. CSM  TS-55®

**Color**  Black  Tan  Brown  Blue  Green

**Taper**  Tapered  Non-Tapered

**Top Projection**  16"  18"  20"  22"  24"  \_\_\_\_\_"

**Bottom Projection**  16"  18"  20"  22"  24"  \_\_\_\_\_"

**Blockout**  None  Top Projection \_\_\_\_\_"  Bottom Projection \_\_\_\_\_"

**Wear Surface**  None  Wear Face  Side Pad  Head Pad

**Material**  22 oz. Vinyl  40 oz. Vinyl  40 oz. CSM  TS-55®

**Color**  Black  Tan  Brown  Blue  Green

**Wear Pleats**  None  WP4  WP8  WP16  Side Pads  Head Pad Corners

**Material**  22 oz. Vinyl  40 oz. Vinyl  40 oz. CSM  TS-55®

**Color**  Black  Tan  Brown  Blue  Green

**Options**  Door Numbers

**Side Pad Mounting Brackets**  None  Flats & Angles  Angles

1 1/2" Offset Flats & Angles

\*Conversions: To convert measurements to metric, see formulas below:

Inches x 25.4 = millimeters (Example: 4" x 25.4 = 101.6 mm)

Feet x .3048 = meters (Example: 12' x .3048 = 3.66 m)

