

# Kelley Aluminum Sectional Doors

KA3552, KA3502



Kelley KA3502



**Kelley KA3552 and KA3502 aluminum sectional doors** are constructed of 2" thick extruded aluminum rails and stiles and can be fitted with a variety of full-view glass options, solid aluminum, perforated or louvered ventilation panels. Perfect for automotive showrooms and repair centers, service stations, car washes, fire houses, restaurants, and sports complexes; our aluminum doors create a clean style for any facility. These doors can be mounted stationary or operative as a stylish alternative for al fresco situations. The robust aluminum strut system provides added strength and durability to larger Kelley KA3552 door sizes up to 24' 2", without restricting the viewing area.



Kelley KA3552 with louvered panels

## CONSTRUCTION

### Kelley KA3552

Heavy-duty aluminum door

- 2" thick extruded aluminum rails & stiles
- Available in 1" width increments

### Kelley KA3502

Medium-duty aluminum door

- 2" thick extruded aluminum rails & stiles
- Available in 1" width increments

Kelley KA3552



Kelley KA3502



**Track:** All doors are available with both 2" or 3" track in Standard Lift, High Lift, Vertical Lift, Low Headroom, and Follow the Roof Pitch. Custom track configurations are also available. For drawings and more information, please visit [www.kelleyentrematic.com](http://www.kelleyentrematic.com).

**Springs:** Torsion springs are oil tempered, helical wound and custom computed for each door for a minimum 10,000 cycle life. Optional springs are available up to 100,000 cycle life.

**Hardware:** Hardware includes minimum 14-gauge galvanized steel hinges and 13-gauge galvanized steel track brackets. All rollers have minimum 10-ball bearings.

## SPECIFICATIONS

|  | Heavy-duty    | Medium-duty   |
|--|---------------|---------------|
|  | Kelley KA3552 | Kelley KA3502 |
| <b>MATERIAL</b>                                  | Aluminum      | Aluminum      |
| <b>CONSTRUCTION LAYERS</b>                       | Single        | Single        |
| <b>PANEL OPTIONS</b>                             |               |               |
| Full View  | •             | •             |
| Perforated                                       | •             |               |
| Louvered Ventilation                             | Fall 2015     |               |
| Aluminum   | •             | •             |
| Insulated Aluminum                               | •             |               |
| <b>INSULATION<sup>1</sup></b>                    | Polystyrene   | NA            |
| <b>R-VALUE<sup>2</sup></b>                       | 2.53          | NA            |
| <b>DOOR THICKNESS</b>                            | 2" (5.1cm)    | 2" (5.1cm)    |
| <b>MINIMUM WIDTH</b>                             | 2'            | 2'            |
| <b>MAXIMUM WIDTH</b>                             | 24' 2"        | 12' 2"        |
| <b>MINIMUM HEIGHT</b>                            | 6'            | 6'            |
| <b>MAXIMUM HEIGHT</b>                            | 20' 1"        | 12' 1"        |
| <b>WIND LOAD<sup>3</sup> AVAILABLE</b>           | •             | •             |
| <b>FINISH WARRANTY<sup>4</sup></b>               | 5 Years       | 5 Years       |
| <b>WORKMANSHIP/HARDWARE WARRANTY<sup>4</sup></b> | 1 Year        | 1 Year        |

<sup>1</sup> Insulation has passed self-ignition, flamespread and smoke developed index fire testing.

<sup>2</sup> Calculated door section R-value is in accordance with DASMA TDS-163.

<sup>3</sup> It is your responsibility to make sure your garage door meets local building codes.

<sup>4</sup> For complete warranty details, visit [kelleyentrematic.com](http://kelleyentrematic.com) or contact your local Kelley dealer.

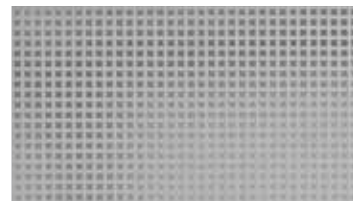
## PANEL OPTIONS



ALUMINUM FULL VIEW

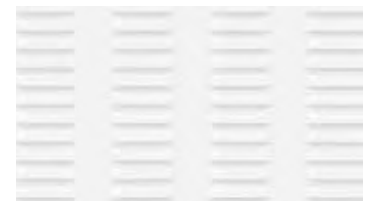


ALUMINUM & INSULATED ALUMINUM



PERFORATED ALUMINUM\*  
0.312" square perforations on 1/2" centers

\*Mill finish only. Custom powder coat available Summer 2015



LOUVERED ALUMINUM  
7 columns of [12] 3" x 3/4" vents on a 4' x 24" panel

## COLORS

Actual color may vary from sample shown. Custom Powder Coat options available for Kelley KA3552 only.



CLEAR ANODIZED



ANODIZED DARK BRONZE\*



ANODIZED BLACK\*



WHITE POWDER COAT\*

\*KA3552 only.

## GLAZING OPTIONS

|                              | Kelley KA3552 | Kelley KA3502 |
|------------------------------|---------------|---------------|
| <b>DSB GLASS</b>             |               |               |
| Single or Insulated          | •             | Single Only   |
| <b>TEMPERED GLASS</b>        |               |               |
| Single or Insulated          | •             | Single Only   |
| <b>OBSCURE GLASS</b>         |               |               |
| Single or Insulated          | •             | Single Only   |
| <b>THERMAPRO LOW-E GLASS</b> | •             | Single Only   |
| <b>POLYCARBONATE GLAZED</b>  | •             | n/a           |
| <b>ACRYLIC GLAZED</b>        | •             | •             |
| <b>CUSTOM OPTIONS</b>        | •             | •             |

**ENTREMATIC**

Entrematic  
165 Carriage Court  
Winston-Salem, NC 27105  
800.558.6960  
[www.kelleyentrematic.com](http://www.kelleyentrematic.com)



Entrematic reserves the right to change specifications and designs without notice and without incurring obligations. Entrematic products may be the subject of one or more U.S. and/or foreign, issued and/or pending, design and/or utility patents. Kelley as word and logo are registered trademarks belonging to Entrematic Group AB or other companies controlled by the same organization. All rights reserved.

©Entrematic Group AB 2015. All rights reserved. Printed in USA Form # KSS-ALSD-1015