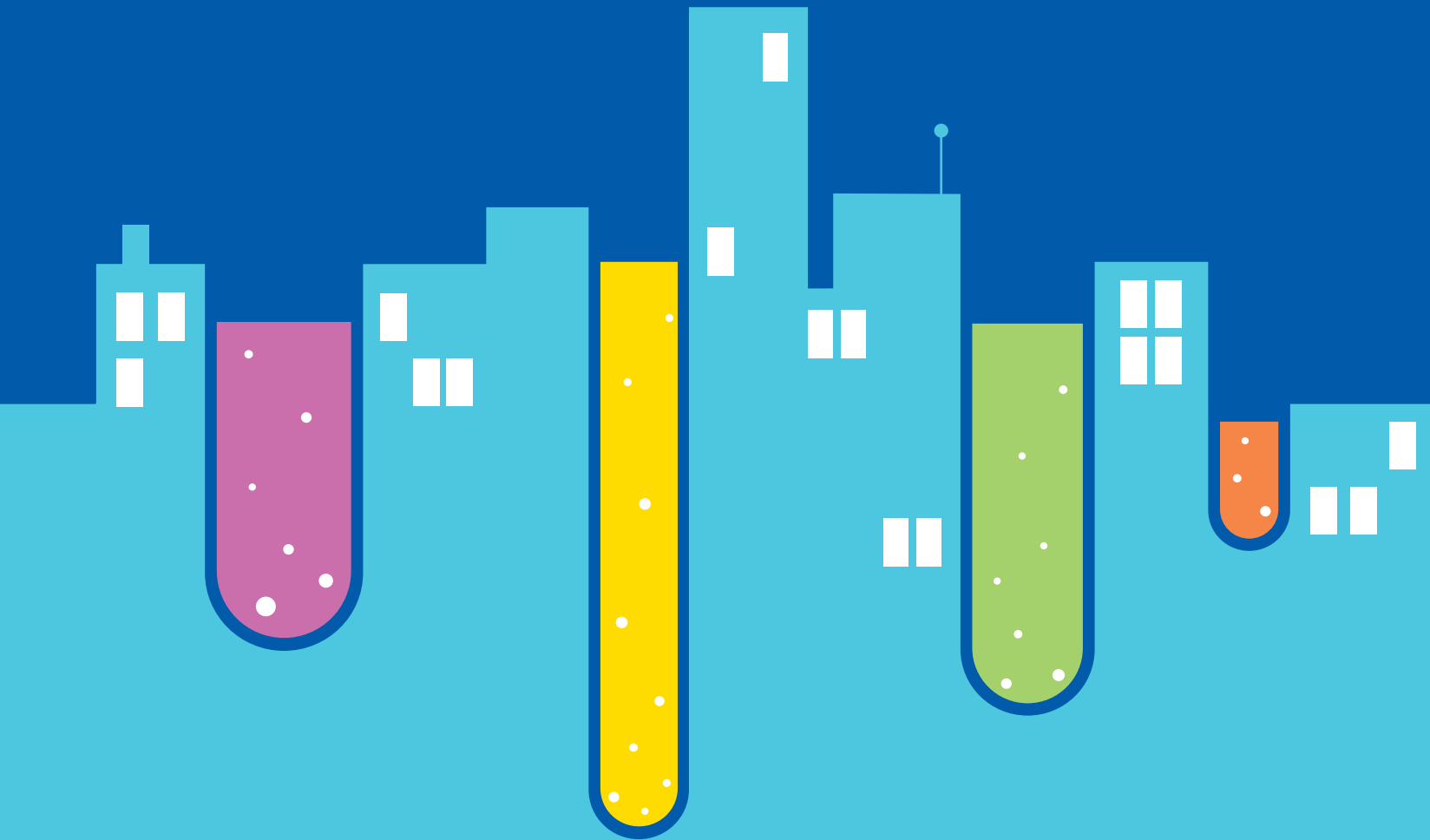




# HENTONS

CHARTERED ACCOUNTANTS



## HEALTHCARE

THE CHEMISTRY OF SUCCESS

[www.hentons.com](http://www.hentons.com)

## CONTENTS

---

Introduction .....	1
We Work With .....	2
Core Services .....	3
Tax .....	5
Accounts .....	7
Advisory .....	9
Financial Planning .....	10
Contact Us .....	12

**WE HAVE MORE IN COMMON  
THAN YOU THINK**

**Focusing on long term support and care**

Our reputation is vital to our success

**Our job demands a personal hands-on approach**

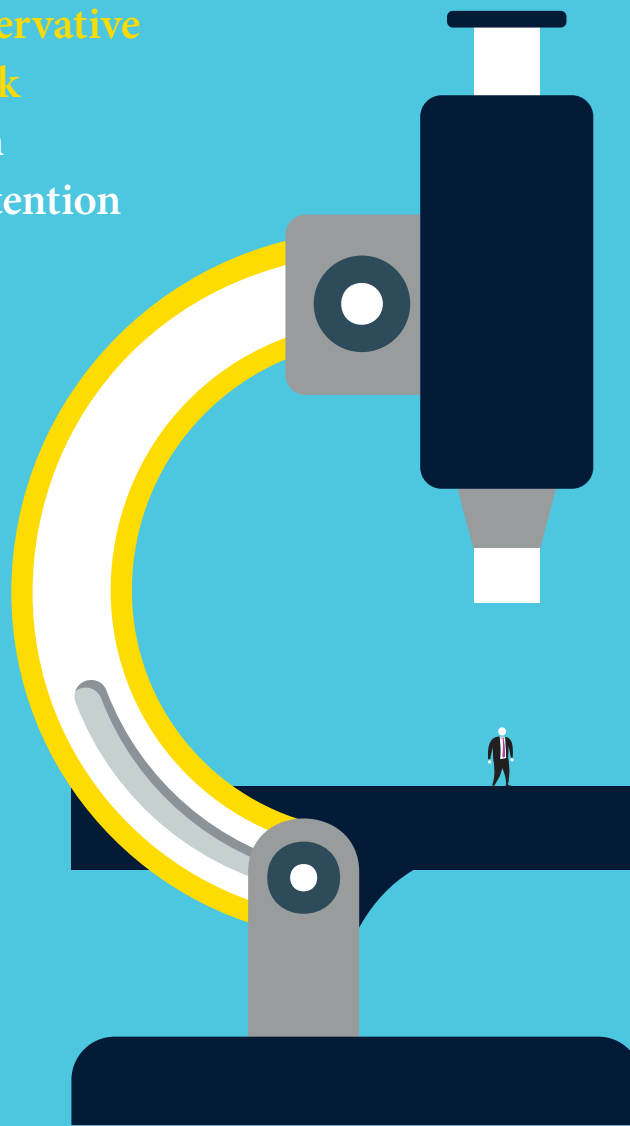
All advice is tailored to circumstances

**We take a conservative approach to risk**

Operating with microscopic attention to detail

**Relying on our specialist knowledge**

Delivering dependable results



# **HENTONS:** **EXAMINING** **RESULTS**

Microscopic attention to detail

## **WE WORK WITH**

---

Doctors  
Consultants  
Dentists  
Care Homes  
Pharmacies

# WE WORK WITH

---

## DOCTORS

The world of general practice continues to be challenging with income growth at disappointingly low or negative levels. Costs continue to rise and the regulatory burden is becoming more onerous. Let us help you understand what will make the most impact on your finances and compare how you are doing by benchmarking against other practices.

## CONSULTANTS

Our consultant clients value advice on timely preparation of accounts and tax returns. We proactively advise on mitigating tax liabilities while minimising risk of exposure to tax enquiries.

## DENTISTS

With clients ranging from NHS contract holders to private practices, we provide dependable advice to ensure they retain as high a proportion of their income as possible. Working with our Wealth Management team will help you grow your wealth and plan for the future.

## CARE HOMES

Care homes face increasing regulatory restrictions and operate in competitive times. We offer advice and assistance to help maximise revenue and minimise tax.

## PHARMACIES

From traditional high street locations to modern health centres, common to all is a competitive environment and regulatory burdens. We work with our clients proactively to help them improve their business and mitigate their tax.

“

*6-8 week turnaround time  
from date of collection of  
records to draft accounts  
and tax estimates.*

– Our Promise To You

”

# EXCELLENCE AS STANDARD

---

## CORE SERVICES

Our core services have been designed to provide you with everything you need to remain compliant with HMRC requirements with the added benefit of analysis, projections and benchmarking so you get the most out of your financial planning.

### TAX

Preparation and submission of tax returns and planning.

### ACCOUNTS

Highly detailed annual practice accounts tailored to the specific requirements of the business and its owners.

### REVIEW

Capital and current account balances and advice on working capital management.

### PROJECTIONS

Drawings projections.

### ANALYSIS

Financial activities analysed and statistical reviews of performance against other practices.

### PENSIONS

Annual superannuation certificates.

# HENTONS: INJECTING GROWTH

Delivering fast and effective measures



# SPECIALIST SERVICES

## TAX

Our dedicated tax practice brings together experienced professionals whose aim is to minimise tax liabilities.

### RETURNS

- Partnership and personal taxation.
- Preparation of tax returns.

### LIABILITY MANAGEMENT

- Mitigating annual liabilities for income and capital taxes.
- Providing advance notice of when liabilities fall due.

### PLANNING AND CONSULTANCY

- Innovative and strategic planning.
- Change of year end / utilisation of overlap relief.
- Inheritance tax reviews and planning.

### VAT

- Preparation of VAT returns and specialist VAT advice.

### PAYROLL

- Our Payroll Bureau provides accurate calculations of pay after all deductions, comprehensive Real Time compliance and preparation for Auto Enrolment.

### RESEARCH AND DEVELOPMENT TAX CREDITS

- We work with you to truly understand your projects and maximise any claim made.
- Just one technical interview and we can do the rest on your behalf.

### *Issues facing the healthcare sector...*

#### High Taxation

We help you understand your personal circumstances and objectives, and advise on appropriate strategies to mitigate tax consequences.

We advise whether incorporation will work for you, and model the financial consequences on tax, superannuation and net income of actively reducing the value of work undertaken. This will help you match income and tax burden to lifestyle choices.

# The Facts:

**We are long standing  
members of \*AISMA**

**We support practices  
of all sizes**

**We act for over 150 GP  
practices and associated  
businesses which includes  
consultants, locums,  
dentists and other  
healthcare providers**



# ACCOUNTS

More than just regulatory compliance – our service is essential for the best performance of your business.

## PREPARED

- Accounts prepared on a timely basis detailing income streams from GMS, PMS and APMS contracts and analysis of expenditure to allow agreed allocations of profit.

## APPRAISED

- Appraisal of practice finance and benchmarking, measuring you against national averages and highlighting areas to target for improvement.

## PROJECTED

- Drawings projections.

## ESTIMATED

- Completion of Annual Certificates of Pensionable Profits; estimates of future liabilities; preparation of tax and superannuation estimates with accounts so that practices can plan for payments.

## ADVISED

- Advice and explanations of capital/current accounts.
- Advice on all aspects of GP finance including premises reimbursements; personal medical services and extra income generation.

## TRAINED

- Training, support and advice to practice managers regarding bookkeeping, systems and best practice along with software implementation.

### *Issues facing the healthcare sector...*

#### Financial Performance

Our team provide financial statements with sufficient detail on income streams and expenditure to provide accurate allocations of profit and a true record of assets and liabilities.

#### Succession and Retirement Planning

Practices evolve and continue beyond the working lives of the individual GPs, presenting concerns and opportunities for both the practice and the individual.

We provide advice on general and legal aspects to ensure the cashflow, working capital and funding requirements are suitable both in advance and subsequent to any changes.

“

*The help and advice provided by Hentons Medical team has proved invaluable with the development and changing needs of our business.*

– NHS North Derbyshire CCG

”

# CLOUD ACCOUNTING

Hentons understands that running a medical practice or health centre can be busy and demanding. As a Platinum Partner for Xero, we have an expert team on hand, who can support your move to Xero.

**With Xero, you can free up time so you can focus more on your patients. Xero can transform your healthcare business by enabling you to:**

- Keep track of your income such as drug reimbursements with Xero live reporting
- Automated bank feeds into Xero will reduce the need to check your bank transactions and make reconciliation easier, saving you precious time.
- Xero provides unlimited cloud storage, meaning there is no longer a need to keep unnecessary paperwork. Go paperless and free up space in your surgery.
- Xero makes the year-end process so simple. All the information you need, for your year-end, will be stored within Xero.
- Track working hours, approve staff holidays, and make paying your staff even easier with online payroll in Xero.
- Manage your workload at work, home or on the go with a suite of mobile apps
- Sync Xero with third-party healthcare apps for appointment scheduling, practice management and more.
- Xero also allows you the ability to give access to your accountant, enabling real-time support, when you need it the most.

## USEFUL TOOLS FOR HEALTHCARE BUSINESSES

**These are just some of the things medical practices or health centres love about Xero:**

●

***Xero dashboard***  
See how things are going with a glance at the up-to-date charts on the Xero dashboard

●

●

***Mobile app***  
Stay connected to your business on the go with a suite of mobile apps

●

●

***Track inventory***  
Stay on top of stock control and easily add items into invoices and orders

●



**HENTONS:**  
**MONITORING**  
**YOUR PERFORMANCE**

Attuned to the heartbeat  
of your practice

# ADVISORY

We offer effective and efficient solutions when our clients turn to us for advice.

## INCORPORATIONS

We advise clients on potential incorporation structures to mitigate risk, enhance opportunities and reduce tax liabilities.

## PARTNERSHIP AGREEMENTS

Advising on the legal, commercial and tax content of partnership agreements to ensure they cover appropriate profit allocation, succession and day to day management. We also assist with dispute resolution.

## PARTNERSHIP PREMISES

For incoming and outgoing partners we advise on issues surrounding ownership or relocation. We advise how the property should be owned, funded and steps needed to maximise tax reliefs.

## PMS/NEW GMS CONTRACT REVIEWS

We quantify the effect of making a transfer from PMS to GMS (or vice versa) and advise our PMS practices what is happening with GMS, and what they should be claiming from their local area team.

## APMS/TENDERING

Drawing up financial documents required to support a tender and critically reviewing financial plans and assumptions to assess their viability. We also advise on the requirements to join the NHS Superannuation Scheme.

## 'LOCAL AREA TEAM' DISPUTES

With over 20 years' experience and knowledge of the old "Red Book" and the "New Contract", we help our clients confront unreasonable or incorrect demands from the local area team.

## PARTNERSHIP MERGERS/SPLITS

We assess the financial effect of a merger or demerger. The pitfalls of a merger or split are explained in terms of the effect on tax, business profits and superannuation.

# FINANCIAL PLANNING

We are delighted to introduce Financial Planning specialist, Kim Spence. Kim has over 12 years' experience in the industry and can offer advice in a range of areas including:

- Private Pensions
- Investments
- Protection
- Business Protection
- Mortgages

In addition Kim specialises in NHS Pension.

## NHS PENSIONS

- One to one meetings to discuss your NHS Pension Statement so you have a better understanding of the pension benefits accrued to date, we also provide an explanation as to how your pension works.
- Discuss the changes to the NHS Pension Scheme and how this will affect any preserved benefits in the 1995 and 2008 sections of the scheme.
- Projections of retirement benefits to your selected retirement age.
- Pension reports looking at projected benefits to retirement, assessing when you are likely to exceed the Lifetime Allowance, and various options and solutions to reduce their impact against any Lifetime Allowance Tax Charge which will be incurred.
- Additional retirement planning throughout your employment, such as additional pension purchase through the NHS, private pension contributions out with the NHS, other investments, e.g. ISA's.
- Discuss 'At Retirement Options' such as 24 Hour Retirement, maximising lump sum, timing of retirement.

For more information on the services Kim is able to provide please visit:

[www.hentons.com](http://www.hentons.com)

Contact her on 07803 139484, 0113 234 0000

or at [kim@hentons.com](mailto:kim@hentons.com)

Hentons Wealth Ltd is authorised and regulated by the Financial Conduct Authority. FCA registration number 809391

“

*Our Medical Wealth Management specialist offers dedicated investment and pensions advice*

– Our Promise To You

”

# CONTACT US

---

## Leeds

---

Northgate  
118 North Street  
Leeds  
LS2 7PN

**T** 0113 234 0000  
**E** info@hentons.com

## Thirsk

---

24 Finkle Street  
Thirsk  
YO71DA

**T** 01845 522 121  
**E** thirsk@hentons.com

## London

---

Ground Floor  
31 Kentish Town Road  
London  
NW1 8NL

**T** 020 7637 3210  
**E** london@hentons.com

## York

---

124 Acomb Road  
York  
YO24 4EY

**T** 01904 799 499  
**E** york@hentons.com

## Sheffield

---

Kollider, Castle House  
Castle Street  
Sheffield  
S3 8LS

**T** 0114 246 1722  
**E** sheffield@hentons.com

[www.hentons.com](http://www.hentons.com)



**HENTONS**

CHARTERED ACCOUNTANTS



Hentons Chartered Accountants is a trading style of Henton & Co LLP, Hentons (London) Limited and Hentons (York) Limited.

Henton & Co LLP Registered to carry on audit work in the UK and regulated for a range of investment business activities by the Institute of Chartered Accountants in England and Wales.

Copyright 2020 Hentons Chartered Accountants. All rights reserved.

Henton & Co LLP, Registered Number OC300006.  
Hentons (London) Limited, Registered Number 11385061. Hentons (York) Limited, Registered Number 11155433. Hentons Wealth Management is the trading name of Hentons Wealth Ltd which is registered in England and Wales No. 11133092.

Hentons Wealth Ltd is authorised and regulated by the Financial Conduct Authority. FCA registration number 809391