

No matter what the material, if it can flow, the SLUDGE GUZZLER™ hydraulic submersible pump will pump it.

Continuously. Reliably. Completely. Dollar for dollar, SLUDGE GUZZLER™ provides unsurpassed pumping power and versatility to meet all your pumping needs. It is ideal for pumping large volumes of water, mud, sewage, silt and other solid laden liquids that cannot be pumped with conventional suction lift pumps. Built for continuous use under the most demanding industrial and municipal conditions, SLUDGE GUZZLER™ will pump in any position, even upside down.

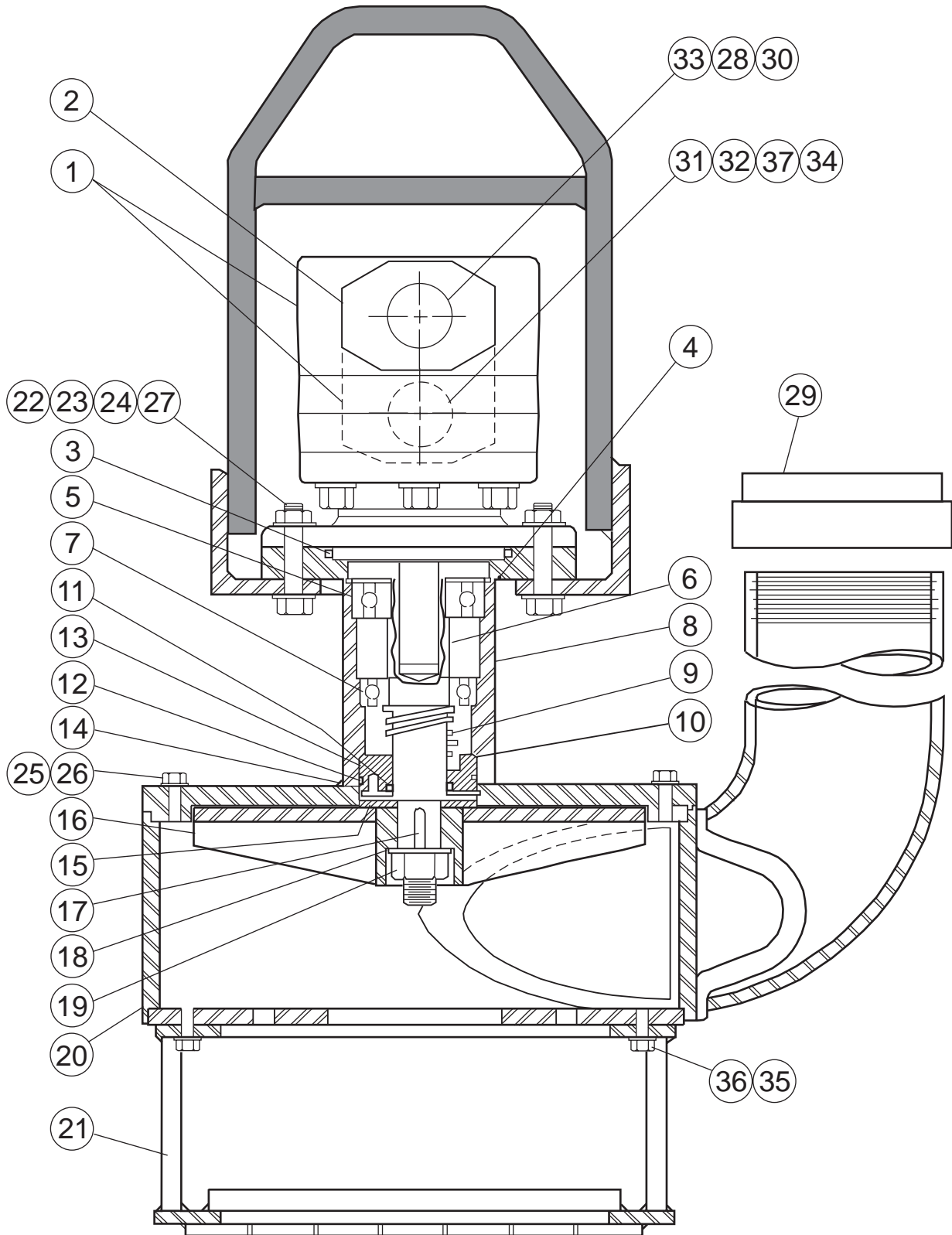
The SLUDGE GUZZLER™ is designed for ease of use and dependable operation. It is lightweight, sets up quickly, and can run dry without damage. The hydraulic system permits variable flow control, minimizing wear on the power unit and conserving fuel. Readily available replacement parts keep downtime and costs to a minimum. When combined with an industrial vacuum loader or liquid vacuum tanker, the SLUDGE GUZZLER™ is a cost effective addition that increases your service capabilities.

## Pump Head

Part No.	Description
1400050	4" (101 mm) — standard
1410047	6" (152 mm) — standard
1400051	4" (101 mm) — super
1410048	6" (152 mm) — super



## 4" (101 mm) Sludge Pump

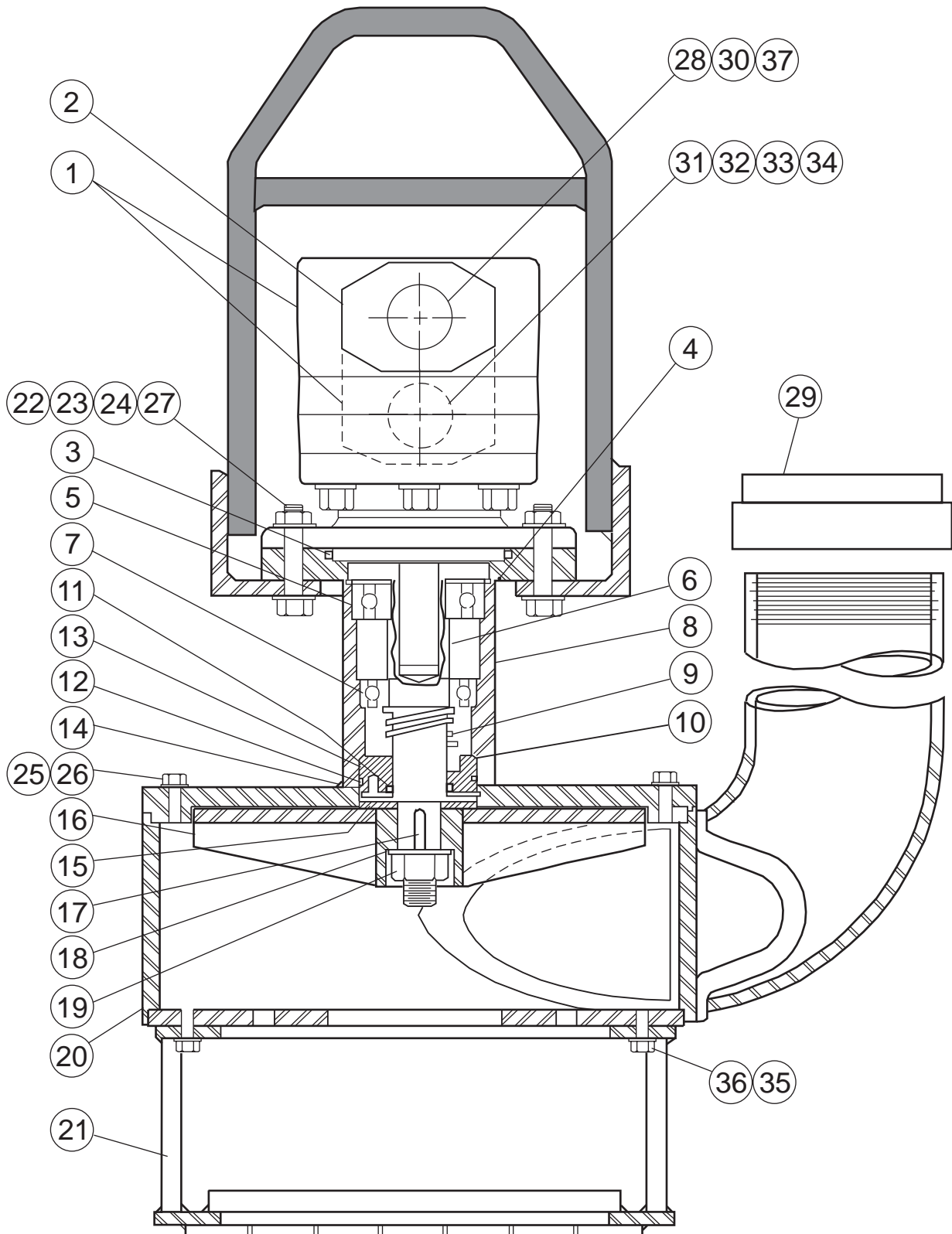


Note: Part numbers and parts are subject to change.

## 4" (101 mm) Sludge Pump

Item	Part No.	Description
1	1400002W	Motor — hydraulic (super)
	1400001W	Motor — hydraulic (standard)
2	1200295	Flange — 4-bolt pump
3	1400006	O-ring — upper
4	1400033	Internal snap ring
5	1400024	Ball bearing — upper
6	1400023W	Shaft
7	1400025	Ball bearing — lower
8	1400049	Bearing carrier assembly
9	1400026	Seal assembly — rotary
10	1400014W	Seal holder
11	1400037	Seal — lip (super)
	1400037	Seal — lip (standard)
12	1400036	O-ring — S/H
13	20937	O-ring — B/C (super)
	20937	O-ring — B/C (standard)
14	1400016	Internal snap ring — lower
15	1400015W	Flinger
16	1400048	Impeller assembly — fabricated (super)
	1400047	Impeller assembly — fabricated (standard)
17	1400022	Key
18	1180030	Washer
19	1170036	Nut — self-locking
20	1400046	Volute housing
21	1400045	Screen assembly
22	1160043	Bolt — hex head (2)
23	1170007	Nut — hex (2)
24	1180010	Lockwasher (2)
25	1160175	Bolt — hex, stainless steel (12)
26	1180004	Lockwasher (15)
27	1180009	Washer
28	1200163	Elbow — male (P)
29	46245D	Camlock — 4" (101 mm) (P)
30	1200253	Quick coupling — female (P)
31	1200134	Reducing bushing (R)
32	16479D	Street elbow (R)
33	70542J	Reducer bushing (R)
34	1200254	Quick coupling — female (R)
35	1160174	Bolt — hex head
36	1180006	Washer
37	402446	Hex nipple

## 6" (152 mm) Sludge Pump



Note: Part numbers and parts are subject to change.

## 6" (152 mm) Sludge Pump

Item	Part No.	Description
1	1410002	Motor — hydraulic (super)
	1410001	Motor — hydraulic (standard)
2	1410004	Port block (2)
3	1410007	O-ring — upper
4	1410029	Internal snap ring
5	1410023	Ball bearing — upper
6	1410022W	Shaft
7	1410024	Ball bearing — lower
8	1410045	Bearing carrier assembly
9	1410025	Seal assembly — rotary
10	1410013	Seal holder
11	1410033	Seal — lip
12	410031	O-ring — S/H
13	1410030	O-ring — B/C
14	1410015	Internal snap ring — lower
15	1410014	Flinger
16	1410044	Impeller assembly — fabricated (super)
	1410043	Impeller assembly (standard)
17	10075M	Key
18	1410016	Washer
19	1170037	Nut — self-locking
20	1410049	Volute housing
21	1410041	Screen assembly
22	1160054	Bolt — hex head (2)
23	1170009	Nut — hex (2)
24	1180012	Lockwasher (2)
25	1160176	Bolt — hex, stainless steel (12)
26	1180006	Lockwasher (15)
27	1180011	Washer
28	1200478	Elbow — male (P)
29	1280107	Camlock — 4" (101 mm) (P)
30	1200371	Quick coupling — male (P)
31	20295	Reducing bushing (R)
32	10453E	Street elbow (R)
33	16864D	Hex nipple (R)
34	1200373	Quick coupling — male (R)
35	1160177	Bolt — hex head
36	1180010	Washer
37	70542E	Reducing bushing (R)