

Dana Transfer Case (Fig. 1)

Part No.	Description
1210001	Model 792
1210121	Disconnect assembly — pump side
1210122	Disconnect assembly — side without pump

Cotta Transfer Case

Part No.	Description
45446	Model 2059-3

OMSI Transfer Case

Part No.	Description
1211098	For High Rail, creep drive
48051A	With disconnect — 1:1 gear ratio
48051C	For NX — 1:1.7 gear ratio
48051AA	Air clutch kit
48051AAA	Check valve
48051AB	O-rings and seals with clutch plates kit
48051AC	O-rings and seals kit
48051AD	Air clutch rebuild kit

Remanufactured transfer cases are available. Please call for pricing.

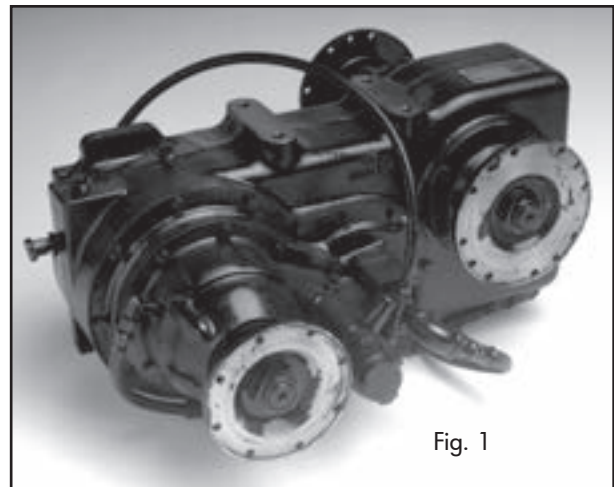
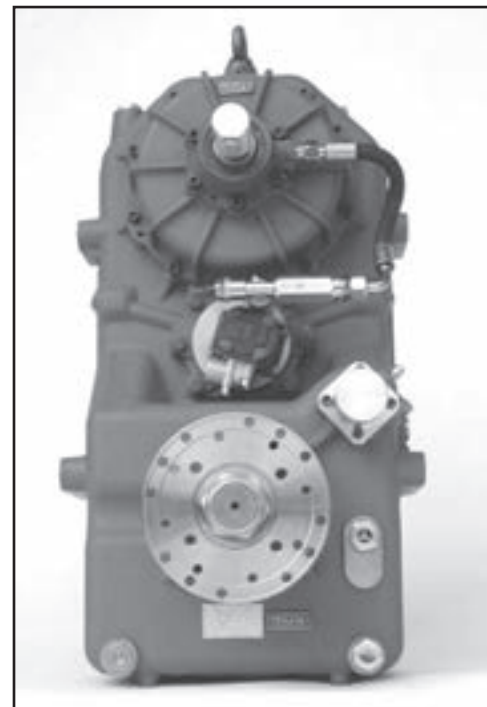


Fig. 1



Transfer Case Brackets

Used on Dana-International transfer case setup.

Part No.	Description
39225F	Mounting bracket (Fig. 1)
1291017	Mount bushing — 4 required per transfer case (Fig. 2)
1291018	Mount insert — 4 required per transfer case (Fig. 3)
61282D	Bracket (Fig. 4)

TECH TIP: To avoid any problems with Dana, OMSI or any other transfer case, always make sure you have the proper air pressure prior to attempting to shift the transfer case and follow all the shift procedures provided with your equipment. It is always better to allow a little more time when engaging and disengaging the transfer case than to allow too little.

Companion Flange

Part No.	Description
1211099	Companion flange, taperlock

Isolator

Part No.	Description
42690	Isolator



Fig. 1



Fig. 2



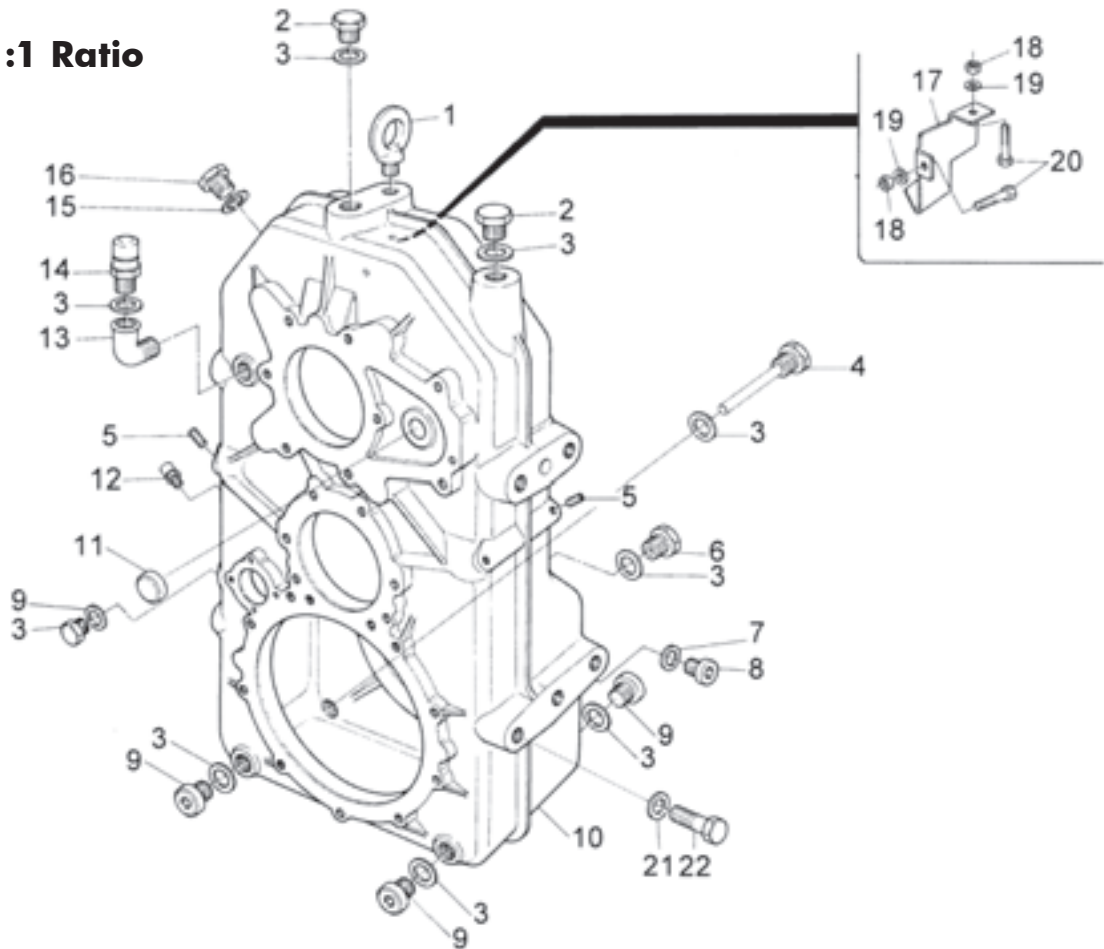
Fig. 3



Fig. 4



Housing, 1:1 Ratio



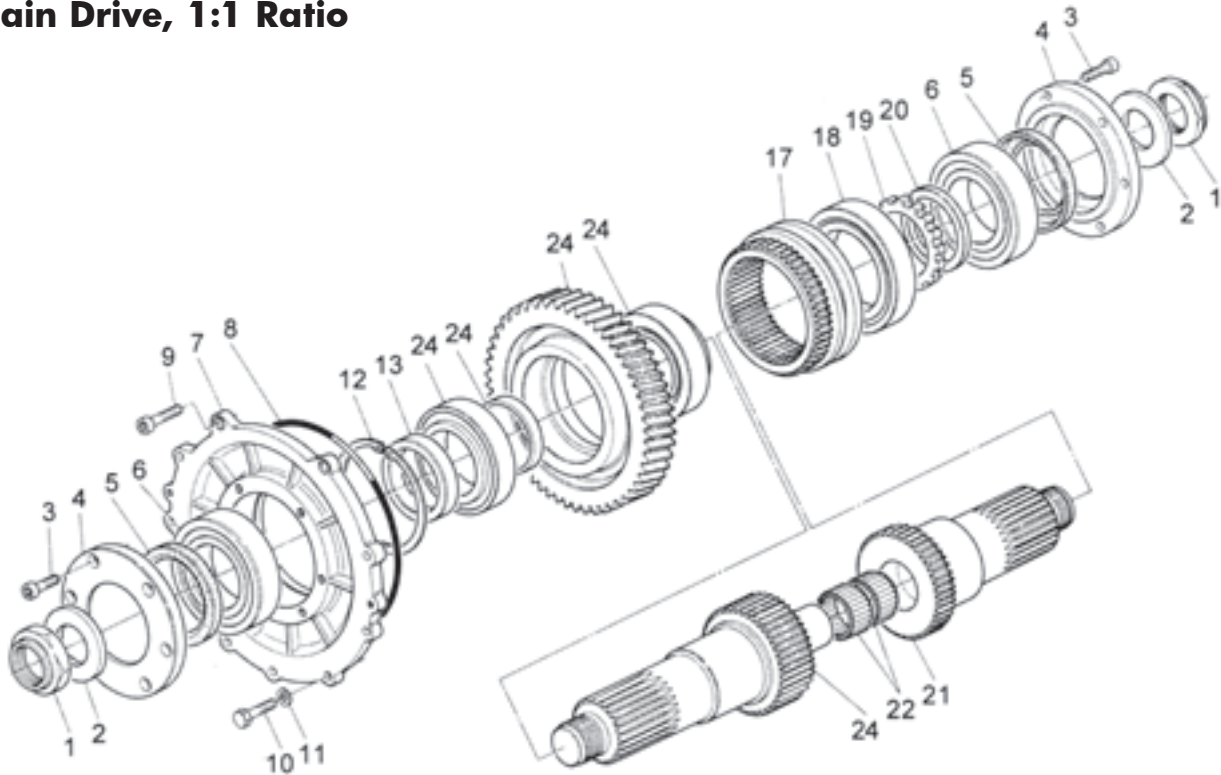
OMSI Transfer Case

Item	Part No.	Description
1	48051CJ	Eye — lifting
2	*	Plug
3	48052AB	Washer — copper
4	*	Plug — magnetic
5	*	Screw — set
6	48051AAT	Plug — drain
7	*	Washer — copper
8	*	Plug
9	*	Plug
10	*	Housing — 1:1.7 ratio
11	*	Plug — freeze
12	*	Plug
13	*	Elbow — street
14	48051AQ	Plug — breather

Item	Part No.	Description
15	48051AH	Washer — copper
16	48051AJ	Plug
17	*	Conveyer — oil lube diverter
18	*	Nut
19	*	Washer — conical
20	*	Screw — M6x20
21	*	Washer — lock
22	48051AR	Screw — M18x45

*Call factory.

Main Drive, 1:1 Ratio



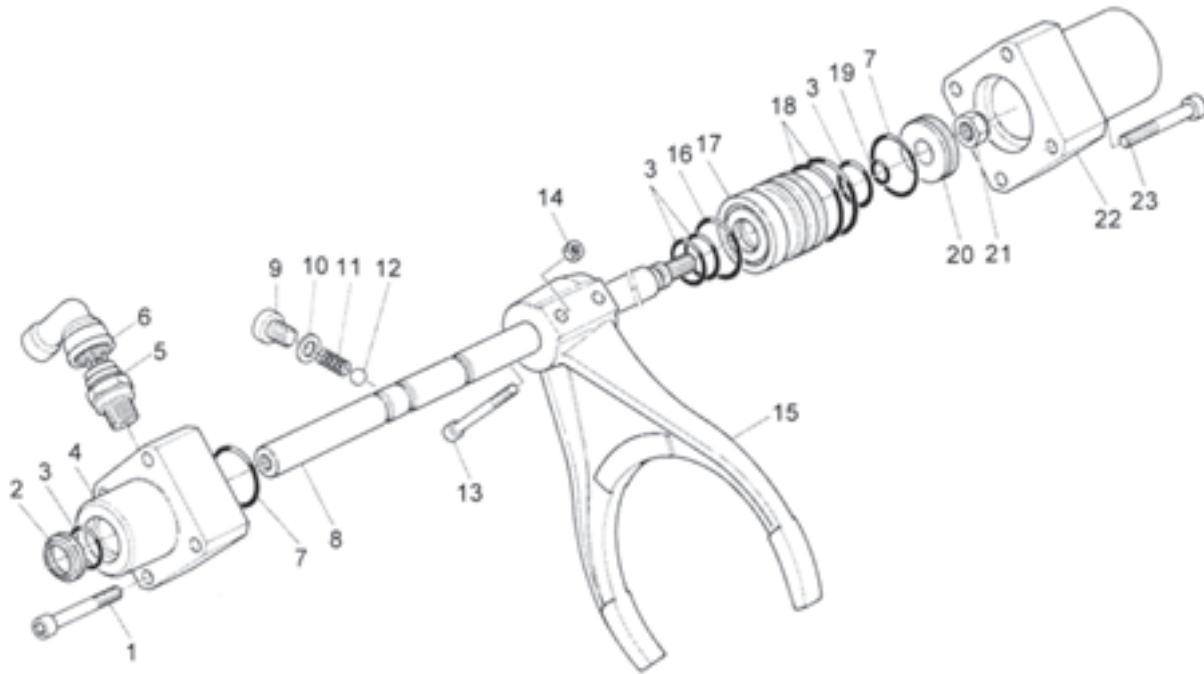
OMSI Transfer Case

Item	Part No.	Description
1	48051AU	Nut — locking
2	48052AY	Washer — spacer
3	48052AAD	Screw — M10x25
4	*	Flange — oil seal support
5	48051BJ	Seal — oil
6	48051BK	Bearing — roller
7	*	Flange — bearing support
8	*	O-ring
9	*	Screw — M10x30
10	*	Screw — M10x35
11	*	Washer — lock
12	48052AW	Ring — split
13	48051BL	Bushing — bearing spacer
14	48051BM	Bearing — roller

Item	Part No.	Description
15	48052BA	Ring — internal
16	*	Gear — input drive
17	48051AW	Ring gear — drive engagement
18	48051BN	Bearing — roller
19	48051CS	Ring — odometer sensor
20	48052AX	Spacer
21	48051CT	Shaft — output drive
22	48051BP	Bearing — roller
24	48051AV	Input gear/shaft kit

*Call factory.

Shifter Control — Main Drive



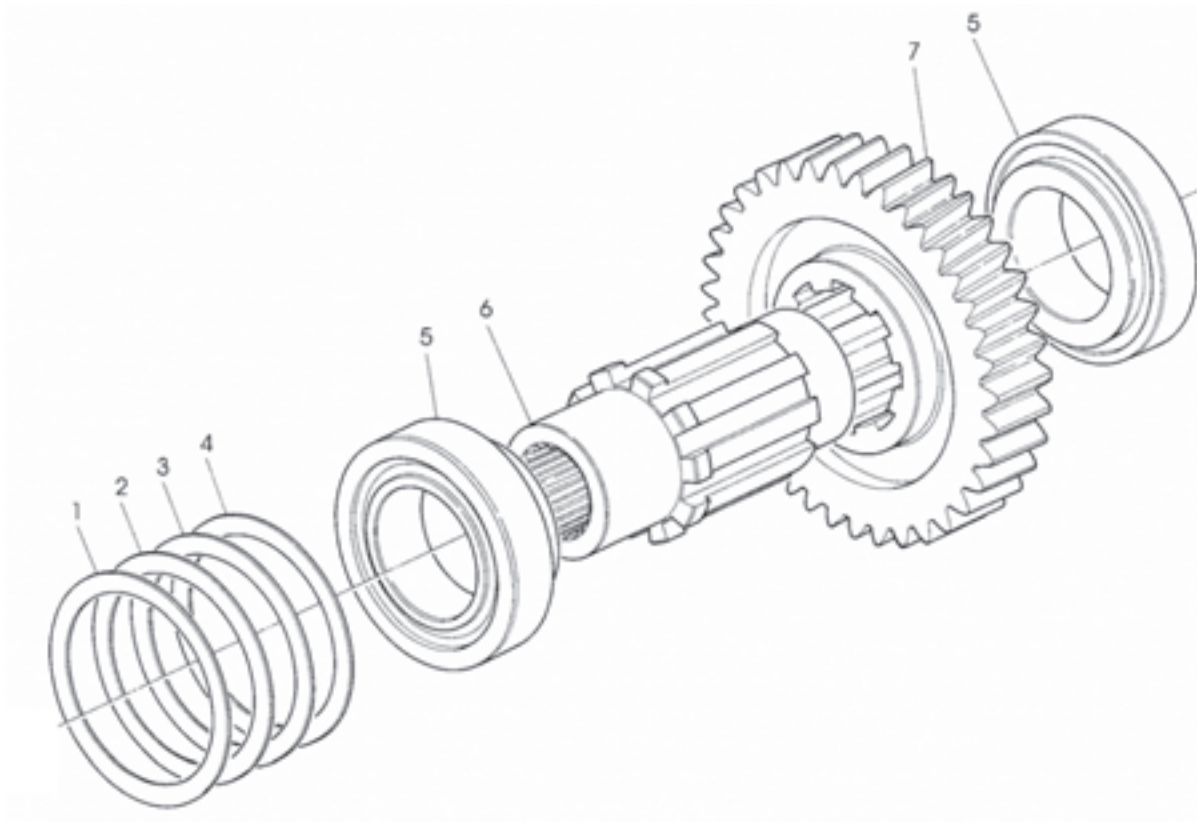
OMSI Transfer Case

Item	Part No.	Description
1	48051DC	Screw — M8x50
2	*	Seal — wiper
3	*	O-ring
4	*	Housing — shaft support
5	48051AK	Switch — shaft positioning
6	48051AM	Cover — wiring protection
7	*	O-ring
8	48051CAA	Shaft — shift control
9	*	Screw — M12x21.5
10	48052BC	Washer — copper
11	48052BD	Spring
12	48052BE	Ball — 3/8" (9.5 mm)
13	48052AG	Screw — M8x47
14	48052AH	Nut — locking

Item	Part No.	Description
15	48051BB	Fork — shifter engagement
16	*	O-ring
17	48051BH	Guide — shifter shaft
18	*	O-ring
19	*	O-ring
20	48052AU	Piston — cylinder
21	48052AM	Nut — locking
22	48052AV	Housing — cylinder
23	*	Screw — M8x45

*Call factory.

Shaft – Intermediate Drive, 1:1 Ratio

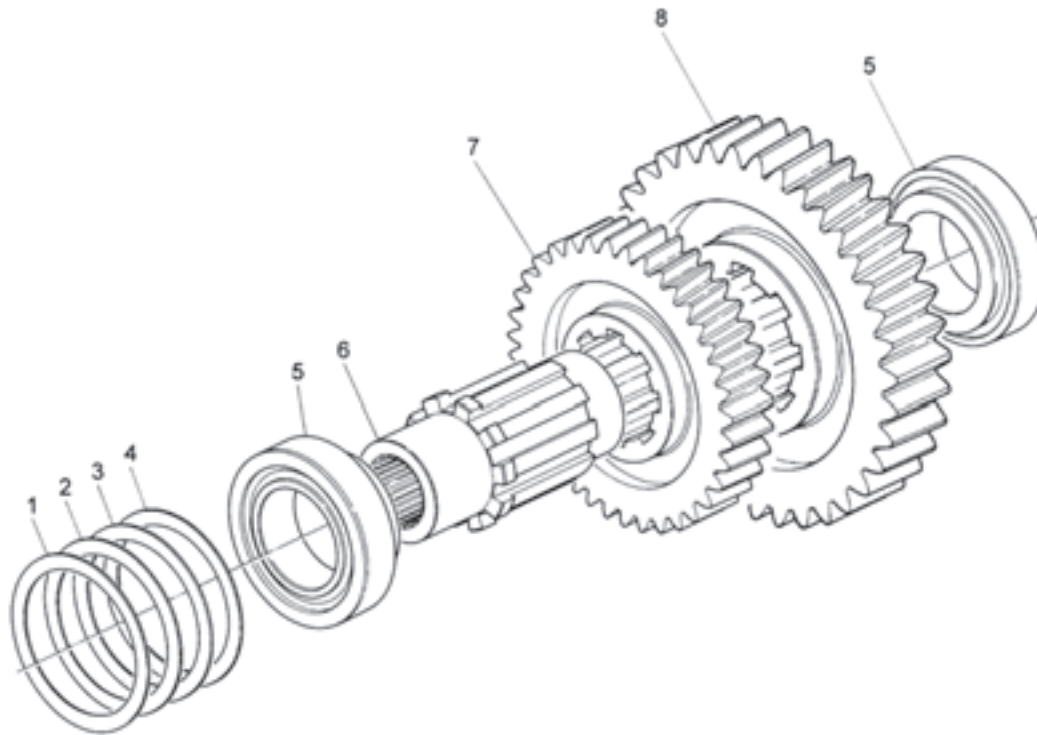


OMSI Transfer Case

Item	Part No.	Description
1	48051CZ	Shim — 0.1 mm
2	48051CW	Shim — 0.2 mm
3	48051CX	Shim — 0.3 mm
4	48051CY	Shim — 0.5 mm
5	48051BW	Bearing — roller
6	48051CU	Shaft — intermediate drive
7	*	Gear

*Call factory.

Shaft – Intermediate Drive, 1:1.7 Ratio

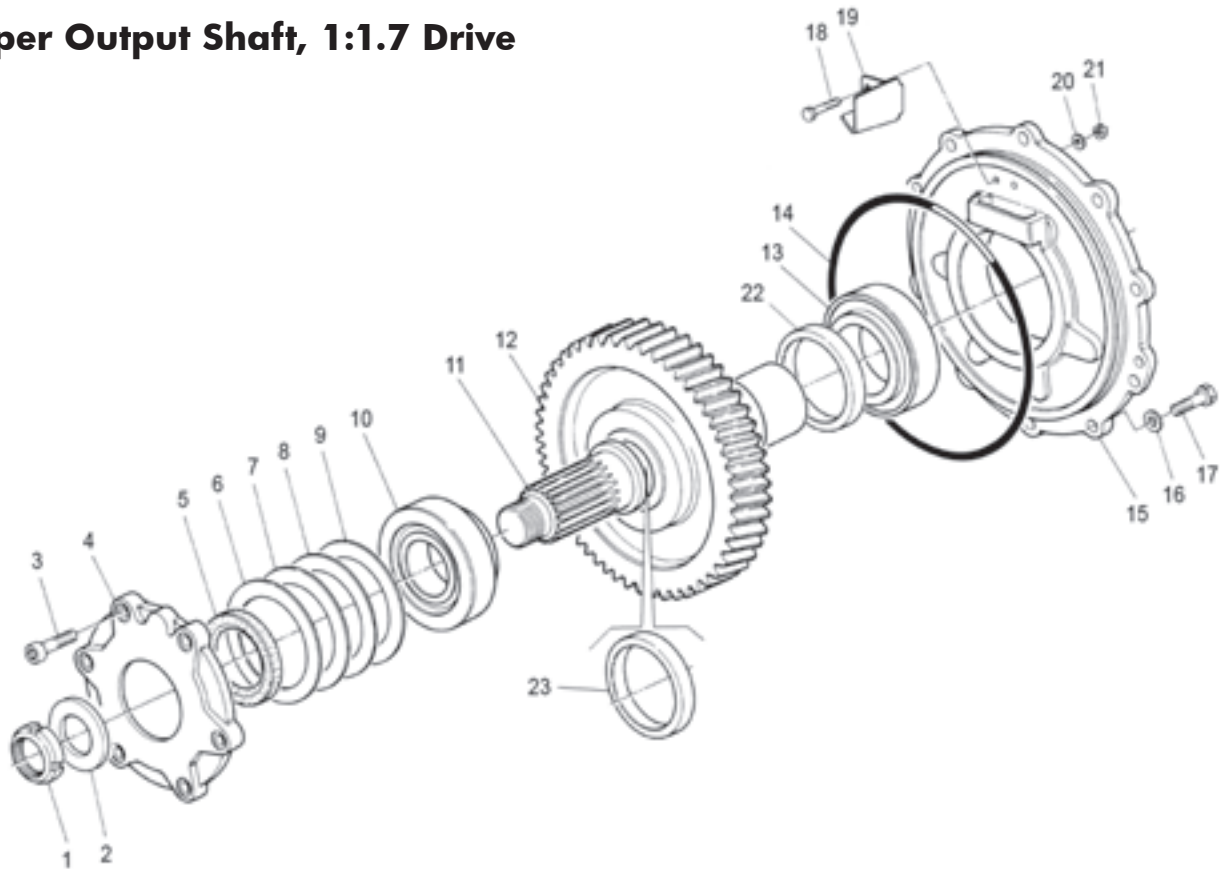


OMSI Transfer Case

Item	Part No.	Description
1	48051CZ	Shim — 0.1 mm
2	48051CW	Shim — 0.2 mm
3	48051CX	Shim — 0.3 mm
4	48051CY	Shim — 0.5 mm
5	48051BW	Bearing — roller
6	48051CU	Shaft — intermediate drive
7	*	Gear — intermediate drive
8	*	Gear — intermediate drive

*Call factory.

Upper Output Shaft, 1:1.7 Drive



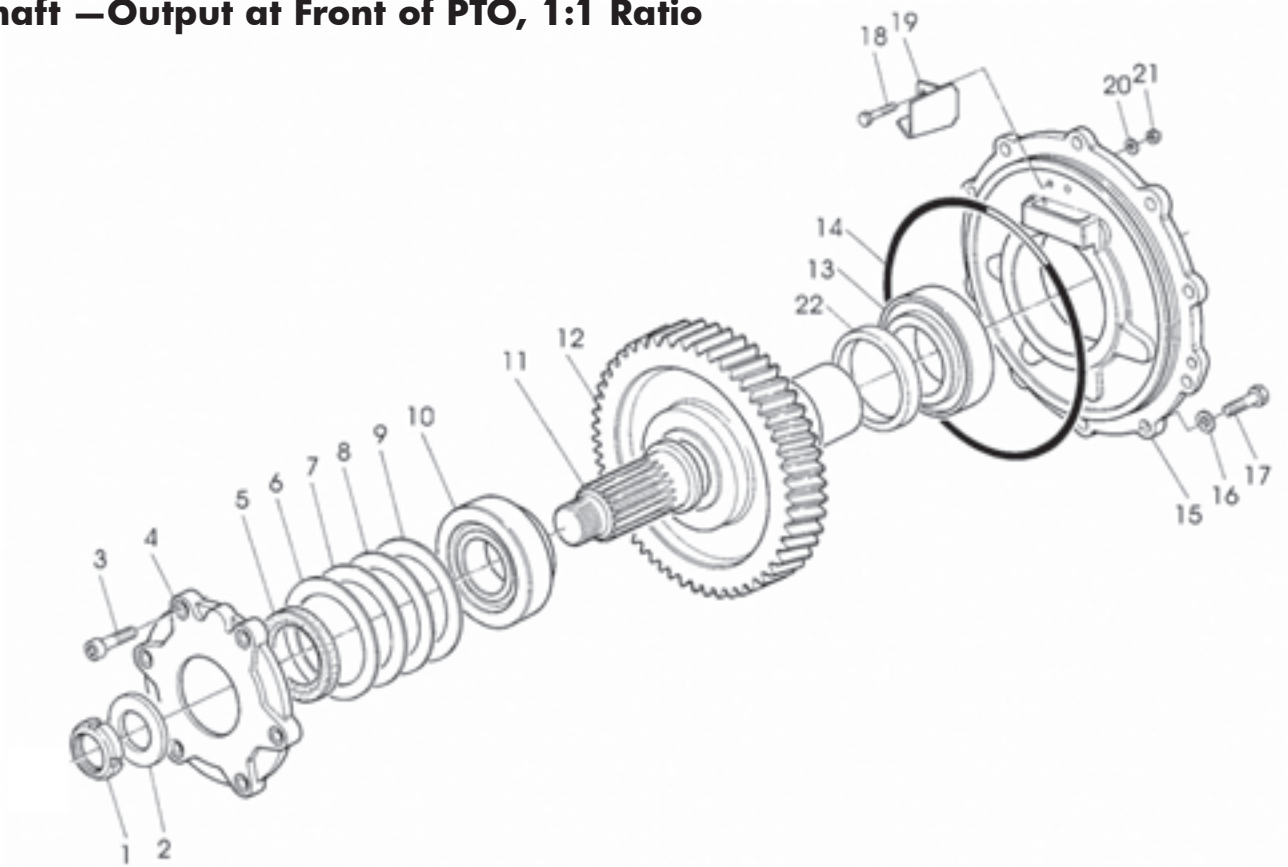
OMSI Transfer Case

Item	Part No.	Description
1	48051CB	Nut — locking
2	*	Washer — spacer
3	48052AAD	Screw — M10x25
4	*	Flange — oil seal support
5	48052AAA	Seal — oil
6	48051CZ	Shim — 0.1 mm
7	48051CW	Shim — 0.2 mm
8	48051CX	Shim — 0.3 mm
9	48051CY	Shim — 0.5 mm
10	48051BU	Bearing — roller
11	*	Shaft — output drive
12	*	Gear — output drive
13	48051BW	Bearing — roller
14	48052AO	O-ring

Item	Part No.	Description
15	*	Flange — bearing support
16	*	Washer — lock
17	*	Screw — M10x35
18	*	Screw — M6x20
19	*	Conveyer — oil lube diverter
20	*	Washer — conical
21	*	Nut — bearing
22	*	Spacer — output shaft
23	*	Spacer — output shaft

*Call factory.

Shaft —Output at Front of PTO, 1:1 Ratio



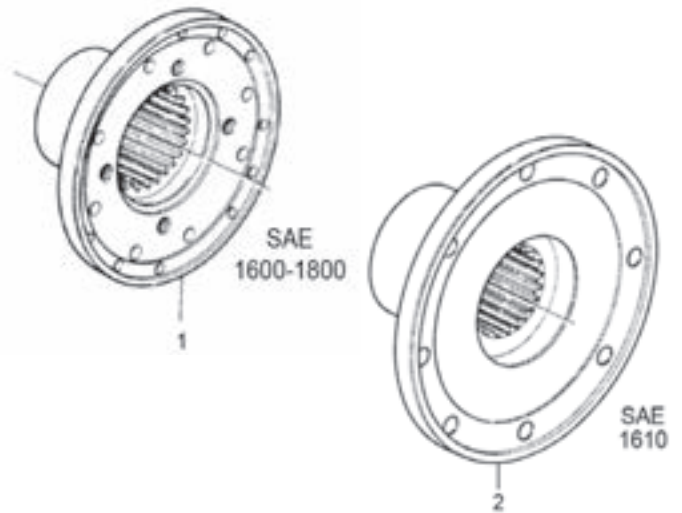
OMSI Transfer Case

Item	Part No.	Description
1	48051CB	Nut — locking
2	*	Ring — spacer
3	48052AAD	Screw — M10x25
4	*	Cover — support
5	48052AAA	Seal — oil
6	48051CZ	Shim — 0.1 mm
7	48051CW	Shim — 0.2 mm
8	48051CX	Shim — 0.3 mm
9	48051CY	Shim — 0.5 mm
10	48051BU	Bearing — roller
11	*	Shaft — output drive
12	*	Gear
13	48051BW	Bearing — roller
14	48052AO	O-ring

Item	Part No.	Description
15	*	Flange — support
16	*	Washer — lock
17	*	Screw — M10x35
18	*	Screw — M6x20
19	*	Conveyer — oil
20	*	Washer — conical
21	*	Nut — bearing
22	*	Ring — spacer

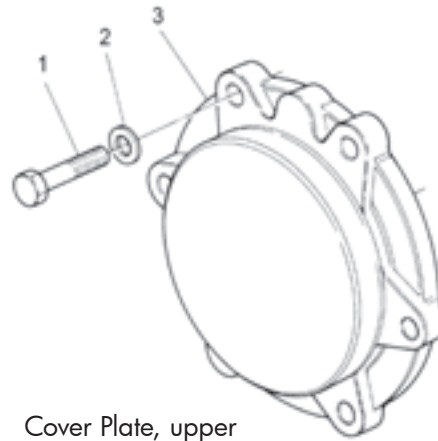
OMSI Transfer Case

Item	Part No.	Description
1	48051CP	Flange — drive SAE 1600-1800
2	*	Flange — drive SAE 1610



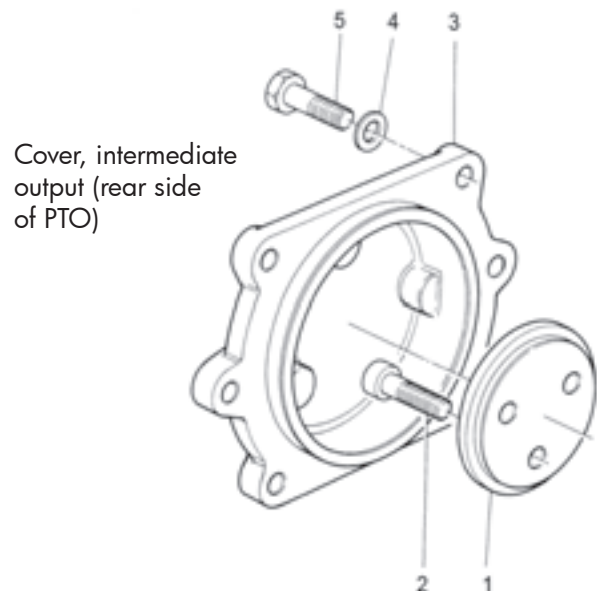
OMSI Transfer Case

Item	Part No.	Description
1	*	Screw — M10x35
2	*	Washer — lock
3	*	Cover



OMSI Transfer Case

Item	Part No.	Description
1	*	Washer — lock
2	*	Screw — M10x30
3	*	Cover
4	*	Washer — lock
5	*	Screw — M10x35



*Call factory.