

**TECH TIP:** Sight glasses can become discolored or damaged, leaving your equipment at grave risk should protective oil or hydraulic levels drop unexpectedly. By stocking replacement sight glasses, you can always have a clear view of your unit's vital fluids.

**Sight Glasses**

Part No.	Description
1320155	2" (51 mm) sight glass and o-ring (Fig. 1)
1230634S	Sight glass used on Hibon 8702 blower (Fig. 2)
1230065	1-1/4" (31.7 mm) sight glass for Roots 10" (254 mm) blower (Fig. 3)
1230021	1" (25.4 mm) sight glass — drive end (Fig. 4)
1230094	3/4" (19.05 mm) sight glass for Roots blower — driven end (Fig. 5)
1230066	1/2" (12.7 mm) sight glass — drive end (Fig. 6)
1320856	4" (101 mm) sight glass (not shown)

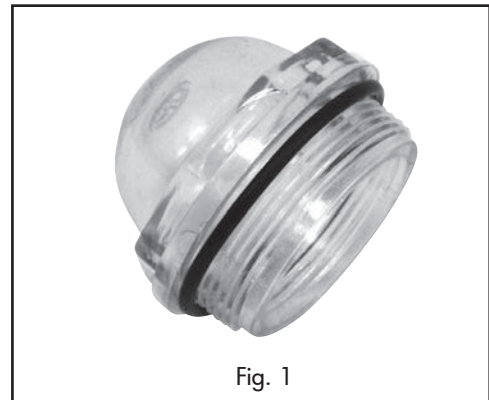


Fig. 1



Fig. 2

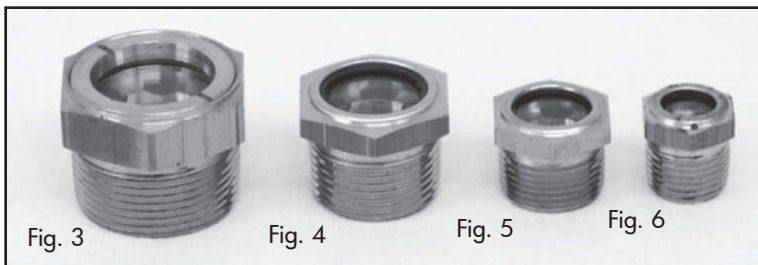


Fig. 3

Fig. 4

Fig. 5

Fig. 6

**Hydraulic Tank Spare Parts**

Part No.	Description
70270	5" (127 mm) sight gauge with temperature for hydraulic tank (Fig. 7)
1201324	Filler breather cap for hydraulic tank. Includes gasket and screen. (Fig. 8)
45699	Sight glass for hydraulic tank (Fig. 9)

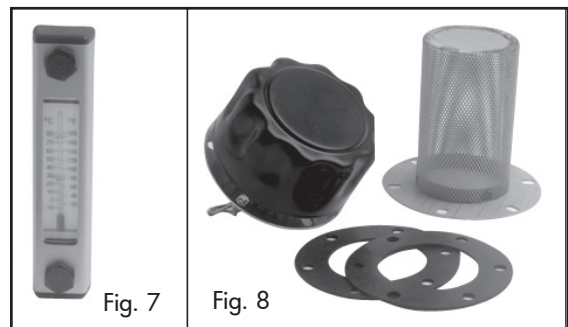


Fig. 7

Fig. 8



Fig. 9

## Tachometer Gauges

Part No.	Description
1191173	Tachometer gauge (engine flywheel) with 80-160 teeth — requires magnetic sensor 1191162 (Fig. 1)
1191161	Tachometer gauge with 44-80 teeth — requires magnetic sensor 46159 (Fig. 2)
70140C	Tachometer gauge — requires magnetic sensor 46159B (Fig. 3)
66711G	Tachometer gear, half - 2 required for completer (for DANA)
66711F	Tachometer gear, half - 2 required for completer (for OMSI)

### Related Items

See Page H-7 for Tach Sensors.



Fig. 1



Fig. 2



Fig. 3

## Hydraulic Gauges

Part No.	Description
20971	Bottom-mounted hydraulic pressure gauge — 3000 psi (207 bar) (Fig. 4)
1200352	Panel-mounted hydraulic pressure gauge — 3000 psi (207 bar) (Fig. 5)
46846D	Bottom-mounted hydraulic pressure gauge — 5000 psi (345 bar)



Fig. 4



Fig. 5

## Vacuum Gauges

Part No.	Description
42645E	2-1/2" (63.5 mm) vacuum gauge with glycerin (Fig. 6)
1140002	Vacuum gauge 0 to 30, panel mount (Fig. 7)
1140433	4" (101 mm) vacuum pressure gauge, -30 hg to 30 psi
1140152	Vacuum pressure gauge, bottom mount, -30 hg to 30 psi



Fig. 6



Fig. 7

**Temperature Gauges**

Part No.	Description
46568	Temperature gauge — 320°F (160°C) for 15" (381 mm) blower
43072	Temperature gauge — 450°F (232°C)
1190842	Temperature gauge — 440°F (227°C) for 18" (457 mm) or 27" (686 mm)blower (Fig. 1)

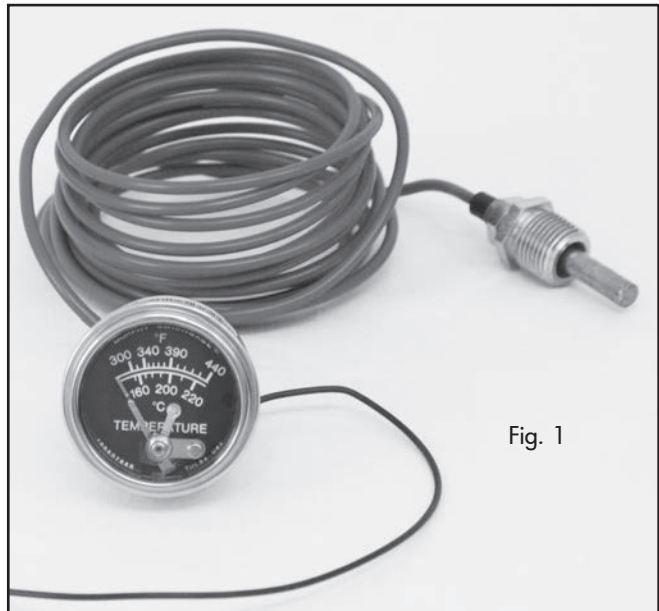


Fig. 1

**TECH TIP:** Guzzler temperature gauges have a remote sensing bulb connected to the gauge head by a sealed capillary system. **DO NOT CUT THIS CAPILLARY OR BEND AT A SHARP ANGLE.** The sensing bulb and capillary are filled with a liquid. When heat is applied to the sensing bulb the liquid turns to a vapor which exerts pressure against the diaphragm movement of the gauge. This movement is read on the dial face as temperature. Temperature gauges are effective preventive maintenance tools. For optimum performance, check these tools periodically: look for frozen pointers, kinked/worn tubing, broken wiring or loose connections. Replace damaged/worn parts; clean/repair as necessary.

**Pressure Gauges**

Part No.	Description
46846	5000 psi (345 bar) pressure gauge — rear port (Fig. 2)
46811U	Air pressure gauge with switch used on NX units (Fig. 3)

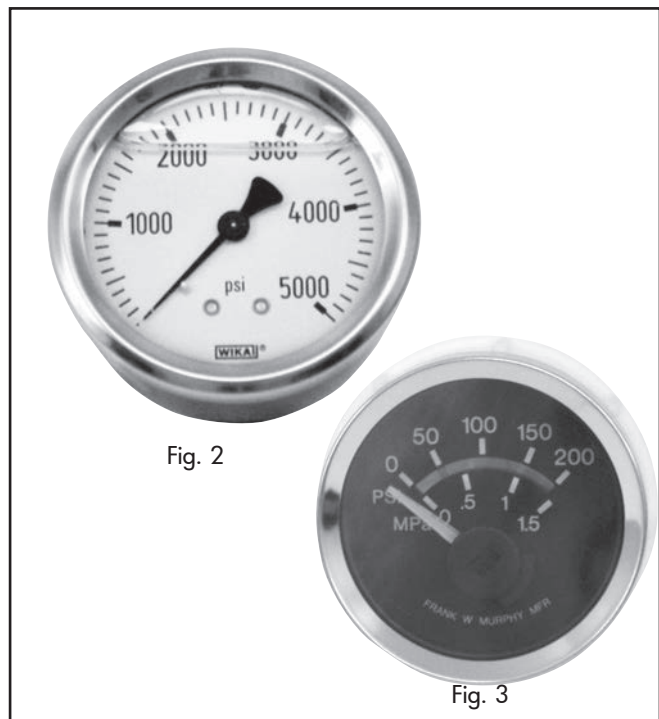
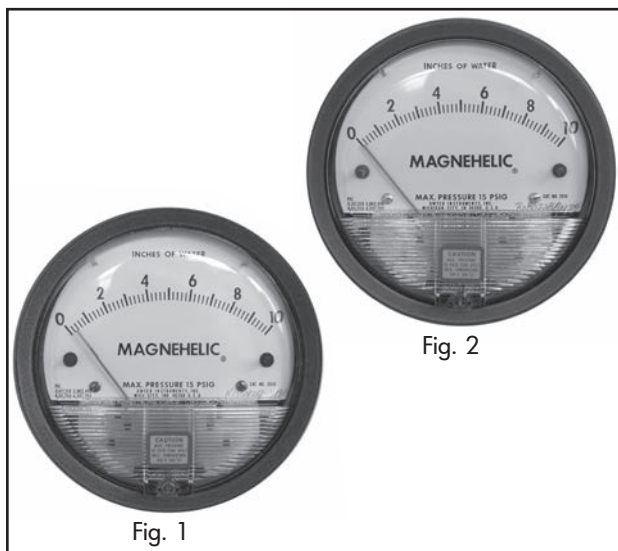


Fig. 2

Fig. 3

## Magnehelic Gauges

Part No.	Description
1140078	Magnehelic gauge, 0-10" (0-254 mm) water column (Fig. 1)
1140003	Magnehelic gauge, 0-100" (0-2540 mm) water column (Fig. 2)



**TECH TIP:** Guzzler supplied magnehelic gauges require no lubrication or periodic service. Keep case exterior and cover clean. Occasionally disconnect pressure lines to vent both sides of gauge and re-zero. If your magnehelic gauge does however fail to function properly here are some things to look for: 1) Make sure the duplicate pressure port is not plugged. 2) Diaphragm may be ruptured from overpressure. 3) Fittings or sensing lines may be blocked, pinched or leaking. 4) Cover loose or O-ring damaged or missing. 5) Pressure sensor improperly located. 6) Ambient temperature may be below 20°F (-7°C).

## Blower Temperature Gauge

Part No.	Description
46811T	Blower temperature gauge with switch used on NX units

