

Shift Tower Relay

Easy to install plug-in relay switch.

Part No.	Description
1191157	8 pin, 12V
1190768	11 pin, 12V (Fig. 1)

Relay Socket

Part No.	Description
1190404	8 pin (Fig. 2)
1190748	11 pin (Fig. 3)
1191404	12-way circuit breaker

TECH TIP: The shift tower relay is keyed for proper alignment in the keyway in the relay socket. Make sure to align the relays and their sockets for proper operation of the functions they control.

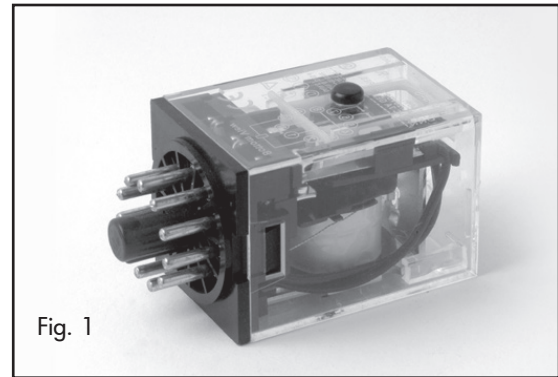


Fig. 1

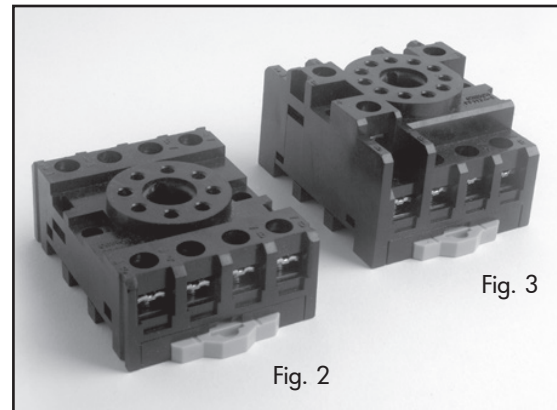


Fig. 2

Fig. 3

Pressure Switches

Part No.	Description
1191468	Mounted on firewall of chassis, non-adjustable, 50 lb (23 kg) (Fig. 4)
40755	Normally open, 60 psi (4 bar) (Fig. 5)
40755A	Normally closed, 60 psi (4 bar)
40755B	Single push double throw, 60 psi (4 bar)
40755C	Set at 92
40755O	Set at 100
1291009A	Pressure Switch N/O with red stripe
1291009B	Pressure Switch N/C with white stripe

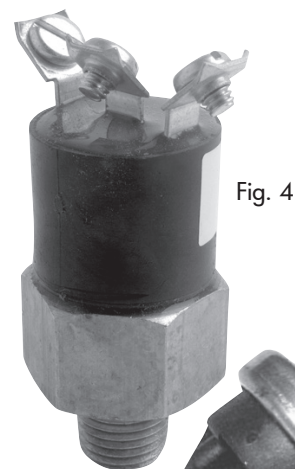


Fig. 4

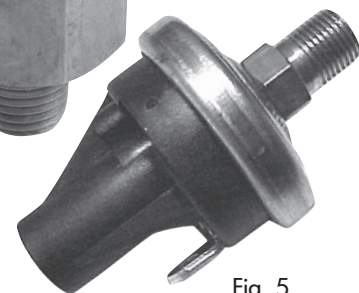


Fig. 5

OMNEX Wireless Control Units

Part No.	Description	Guzzler	HXX
46938VD	Pendant Cap/Chain - Closure Cap/Chain		X
46938VC	Pendant Connector - 5P Female Recept		X
46938VG	Heavy Pendant Cable - 33 Ft		X
46938VH	High-Visibility Shoulder Harness		X
46938VJ	Waist Harness		X
46938VK	Can Receiver	X	
46938VS	T110 Leather Pouch w/ Clip	X	X
46938VT	T110 Yellow Strap Kit	X	X
46938X	Wireless Transmitter/Receiver - T110		X
46938XA	Wireless Transmitter/Receiver - T300		X
46938XAA	1-Axis Paddle for T300		X
46938XAB	2-Axis Joystick for T300		X
46938XAC	E-Stop Button for T300		X
46938XB	Wireless Transmitter - T110		X
46938XC	Wireless Transmitter/Receiver - T110		X
46938XD	Wireless Transmitter/Receiver - T110	X	X
46938XE	Yellow Button Cover - T110	X	X
46938XF	Wireless Transmitter - Part for 46938X		X
46938XCA	Wireless Transmitter - Part for 46938XC		X
46938XG	Charging Dock - T110	X	X
46938XH	Rechargeable Batteries - AA NI-CAD	X	X
46938XJ	Battery Cover - Yellow w/ Magnets	X	X

Radio Control Unit

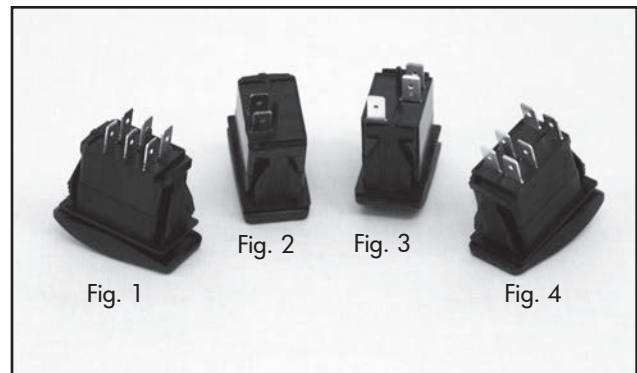
Part No.	Description
46938J	Radio Control Unit HXX
46938JB	Transmitter for 46938J
46938JC	Receiver for 46938J
46938JA	Case for 46938J
46938L	Shoulder strap for 46938J
46938JF	Plastic carry bag for 46938J
46938XAE	Belly Pack

Radio control unit can be used to wirelessly control boom, vacuum relief, throttle, recirculation system and water pump on HXX, NX and Guzzler units. Functions are determined by individual order and will vary by model.



Control Panel Switch (Early Model)

Part No.	Description
1191490	Rocker switch — increase/decrease throttle (Fig. 1)
1191431	Momentary switch for vibrator (Fig. 2)
1191449	Rocker switch — on/off switch (Fig. 3)
1191450	Rocker switch — on/off throttle (Fig. 4)
1191767	Rocker only
1191671	Switch, 2 pos. maintained - red light one side/green light



Vacuum Relief Pendant (Early Model)

Part No.	Description
1350511	Air-operated with twist lock (Fig. 5)
1351115	Air-operated with 4-pin trailer connection



Vacuum Relief Pendant

Part No.	Description
1351262	Assembly with 8-pin trailer connection (Fig. 6)



Boom Pendants

Part No.	Description
1350598	Up/down, left/right, brake
1350790	Up/down, brake
1350741	For XCR unit (Fig. 2)
1351263	4-button: up/down, left/right, open/close (Fig. 3)
1351264	6-button: up/down, left/right (Fig. 4)
1351265	8-button: for swing out cyclone (Fig. 5)
1350053	2-button: up/down, with 4-pin trailer connection (Fig. 6)
1350053A	2-button: up/down, with twist lock



Fig. 2



Fig. 3



Fig. 4



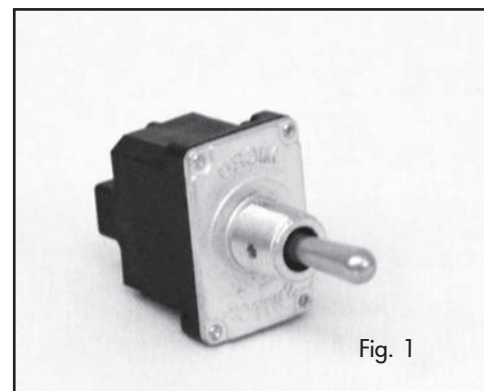
Fig. 5



Fig. 6

Control Panel Assembly (New Style)

Part No.	Description
1000465J	Complete control panel with gauges and switches (wire harness 191362B required when updating)
1190091	3/8" (9.5 mm) copper solder lug for new style control panel
1191027	Circuit breaker for electric vibrator — 60 amp
1200176A	1/8" (3.2 mm) NPT hydraulic cross
1353009	New style Guzzler control panel box only. No gauges or hardware included.
191364	Guzzler wiring harness with 40-pin connection
20358	12V red warning light
20358A	Yellow indicator light
20359	12V green warning light (qty. 3)
40241A	Toggle switch (on/off)
40755	Pressure switch — 60 psi (4 bar)
42612B	Panel light
42645E	2-1/2" (63.5 mm) vacuum gauge with glycerin
44592	Fuse panel
44596A	5 amp circuit breaker (qty. 4)
44597	Ground bus
44622	Momentary toggle switch
45554	Toggle switch
45554A	Toggle switch (Fig. 1)
46344L	Time delay relay
46492	Relay — 75 amp
46811T	Blower temperature gauge with switch
46811U	Air pressure gauge with switch
46811V	Air pressure sender
46846	Hydraulic pressure gauge — 5000 psi (345 bar)
47658A	Hydraulic adapter used with pressure gauge 46846
70140C	New style tachometer, tach sensor 46159B
71261	Relay — 12V 30 amp



Related Items

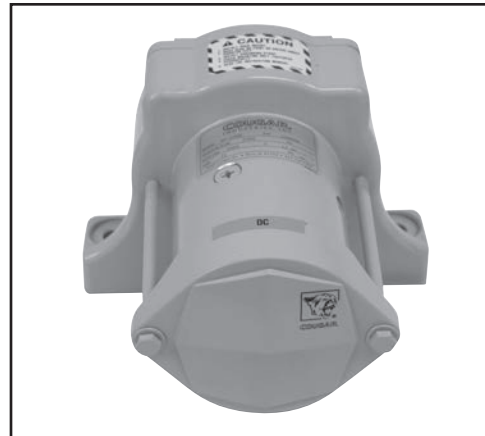
See Page M-14 for replacement Control Panel Butterfly Latches.

Vibrator

Used to loosen debris when emptying tank.
Should not be held down continuously.

Part No.	Description
1190731	Electric vibrator
1191027	electric vibrator., 60 AMP Thermo circuit breaker

TECH TIP: For maximum vibrator life and to lessen the possibility of damaging the vacuum tank/debris body, run the vibrator **45 seconds or less ON** and **90 seconds or more OFF** in order for the vibrator to cool down. Never operate the vibrator with an empty tank or unless you are emptying the debris body. Running the vibrator with the tailgate closed will cause material to pack and become more difficult to empty.



Electric-Over-Air Solenoid Valve

Part No.	Description
1140380	Dual solenoid used for vacuum relief and transfer case shift (Fig. 1)
1140438	New style dual solenoid (Fig. 2)
1140379	Single solenoid used for vacuum relief (Fig. 3)
1140437	New style single solenoid (Fig. 4)
1140430	Air solenoid,

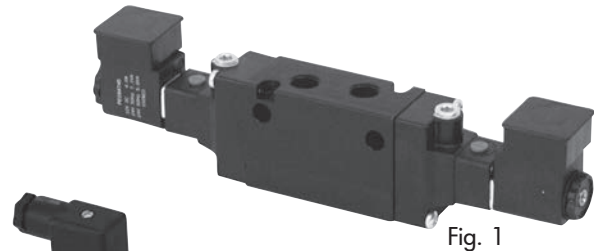


Fig. 1

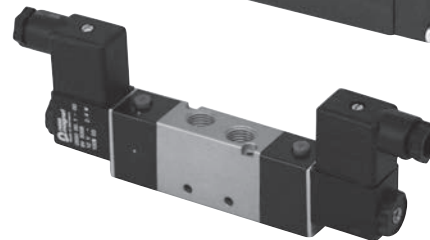


Fig. 2

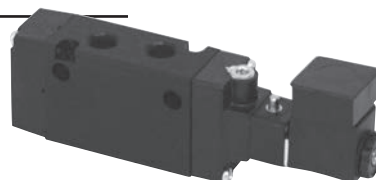


Fig. 3

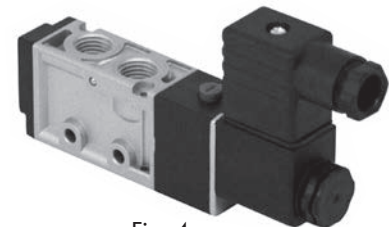


Fig. 4

Switches

Part No.	Description
1191753	PTO switch — dash mount for International® chassis (Fig. 5)
1191754	Road mode to blower mode switch — dash mount for International® chassis (Fig. 6)
1140466	Road mode to blower mode switch — dash mount for Sterling chassis (not shown)
1140466	PTO Switch



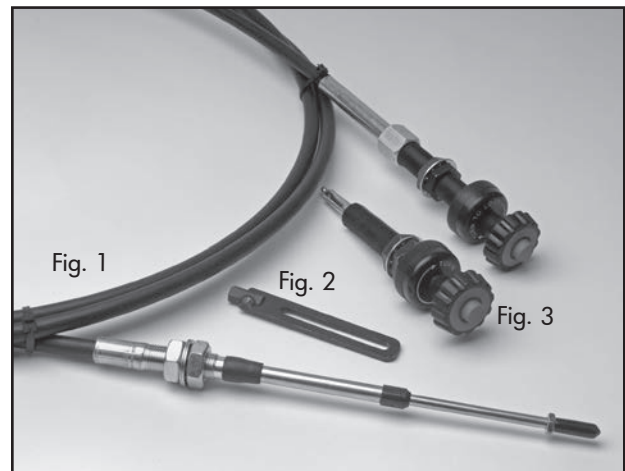
Fig. 5



Fig. 6

Throttle Cable

Part No.	Description
1240428	157" (3988 mm) cable (Fig. 1)
1240615	240" (6096 mm) cable
1240035	195" (4953 mm) cable
1240639	Throttle rod end, 1" (25 mm) stroke
1240640	Throttle rod end, 2" (51 mm) stroke
1240643	Throttle rod end, 3" (76 mm) stroke (Fig. 2)
1240076	Throttle cable head (Fig. 3)
42654	168" (4267 mm) cable
42655	192" (4877 mm) cable
1140024	Air cylinder, 1-1/16", PH, throttle
1240559	throttle linear actuator
46125	Cord reel, steel, 15'



Lights

Part No.	Description
20358D	L.E.D., red, 12V (Fig. 4)
20358H	L.E.D., green, 12V
70499	Clear auxiliary light (Fig. 5)
45741	Left-hand tail light — used on Guzzler units (Fig. 6)
45742	Right-hand tail light — used on Guzzler units
45743	Clearance light, Red
45744	Clearance light, Amber
1191363	Guzzler/ACE complete light kit
36460	Hand spot light with cord



When making electrical connections always use high quality connectors and make good quality crimps. Heat shrink tubing is recommended for a secure connection.

Related Items

See Page M-14 for Light Brackets.

Vacuum Switch

Part No.	Description
42645G	Used on NX recovery system



Pressure Protection Valve

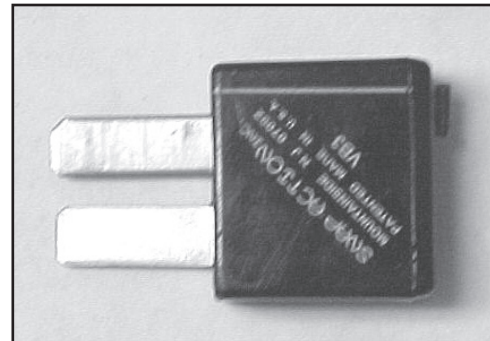
Required when chassis compressed air is used for unit operation. The valve is designed to prevent the accidental release of air pressure and will shut off air to the Guzzler System if air pressure falls to 65 psi (5 bar).



Part No.	Description
44129	Pressure protection valve

Circuit Breaker

Part No.	Description
44596	10 amp
44596A	5 amp
44596C	20 amp



Tach Sensor

Part No.	Description
46159	Old style used with tachometer 1191161 (Fig. 1)
46159B	New style used with tachometer 70140C (Fig. 2)
1191162	Magnetic sensor used with tachometer 1191173 (Fig. 1)
49630	Magnetic pickup sensor
1210795	Tach sprocket for blower



Fig. 1

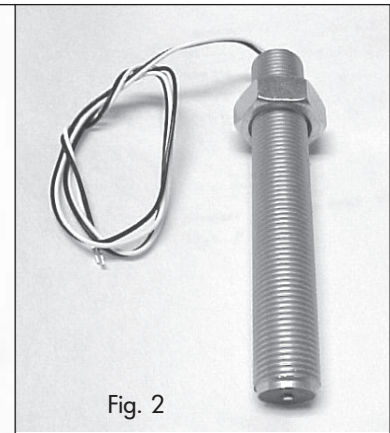


Fig. 2

Related Items

See Page J-2 for Tachometers.

Relay

Part No.	Description
46492	75 amp power relay for various control panels (Fig. 3)
1190447	12V for vibrator
1191109	12V time delay relay (Fig. 4)
6344L	Time delay
6344F	Time delay starter

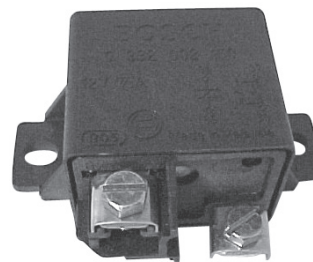


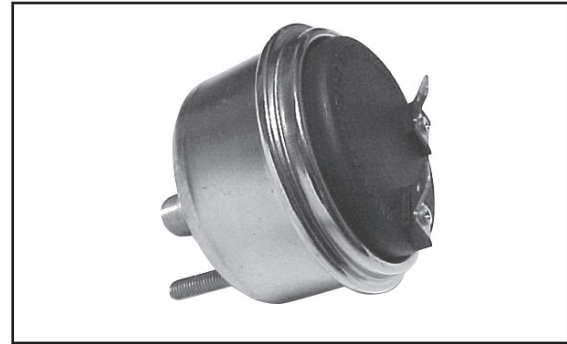
Fig. 3



Fig. 4

Air Pressure Sender

Part No.	Description
46811V	200 psi (14 bar)



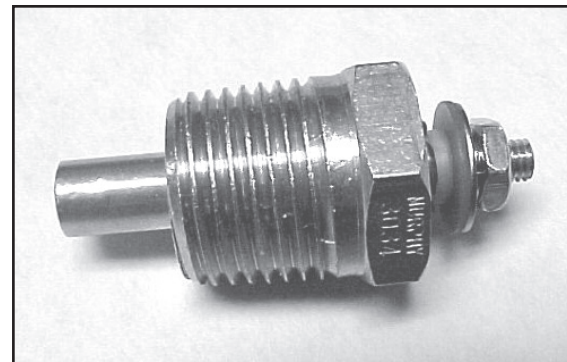
3-Position Throttle Switch

Part No.	Description
47772	Electric throttle switch used on NX vacuum recovery system
40241	Switch - toggle SPST Off/On
1190357	Contact Block, special early closing
1190334	Switch, 3-position Select, w/ manual return



Blower Temperature Sending Unit

Part No.	Description
47903A	300°F (149°C)



Temperature Sending Unit Boot

Part No.	Description
47903AA	Sender boot



Air Solenoid Assembly

Part No.	Description
1140456	Air Solenoid Valve Assembly (Fig 1)
1140456A	Replacement Solenoid (Fig. 2)
1140456B	Replacement Valve Module (Fig. 3)

Solenoid (Fig. 4)

Part No.	Description
1191717	12V — used as main power relay in various control panels

Air Solenoid (Fig. 5)

Part No.	Description
1140430	For International® chassis 2674

Replacement Solenoid Kit

Part No.	Description
1353001	Upgrade kit for Dana transfer case (See drawing)

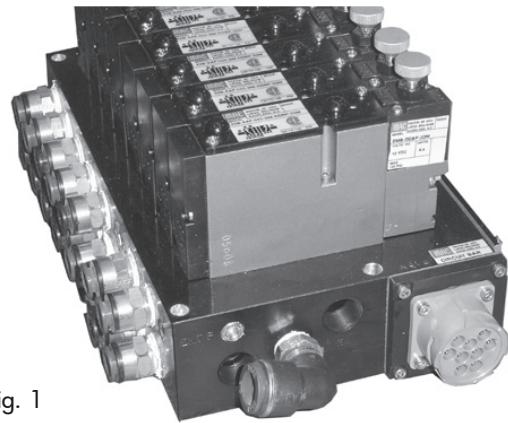


Fig. 1

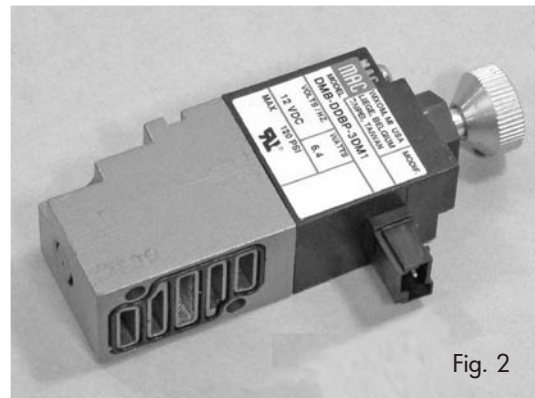


Fig. 2

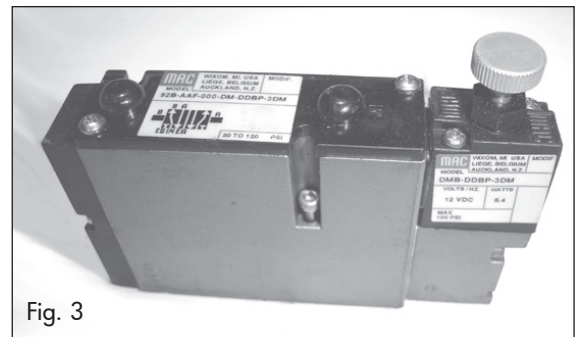


Fig. 3

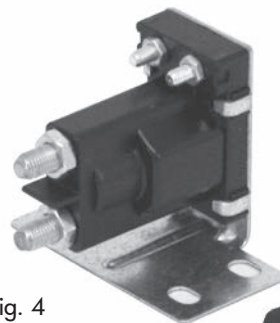


Fig. 4

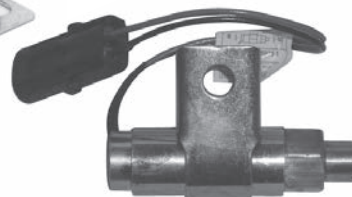
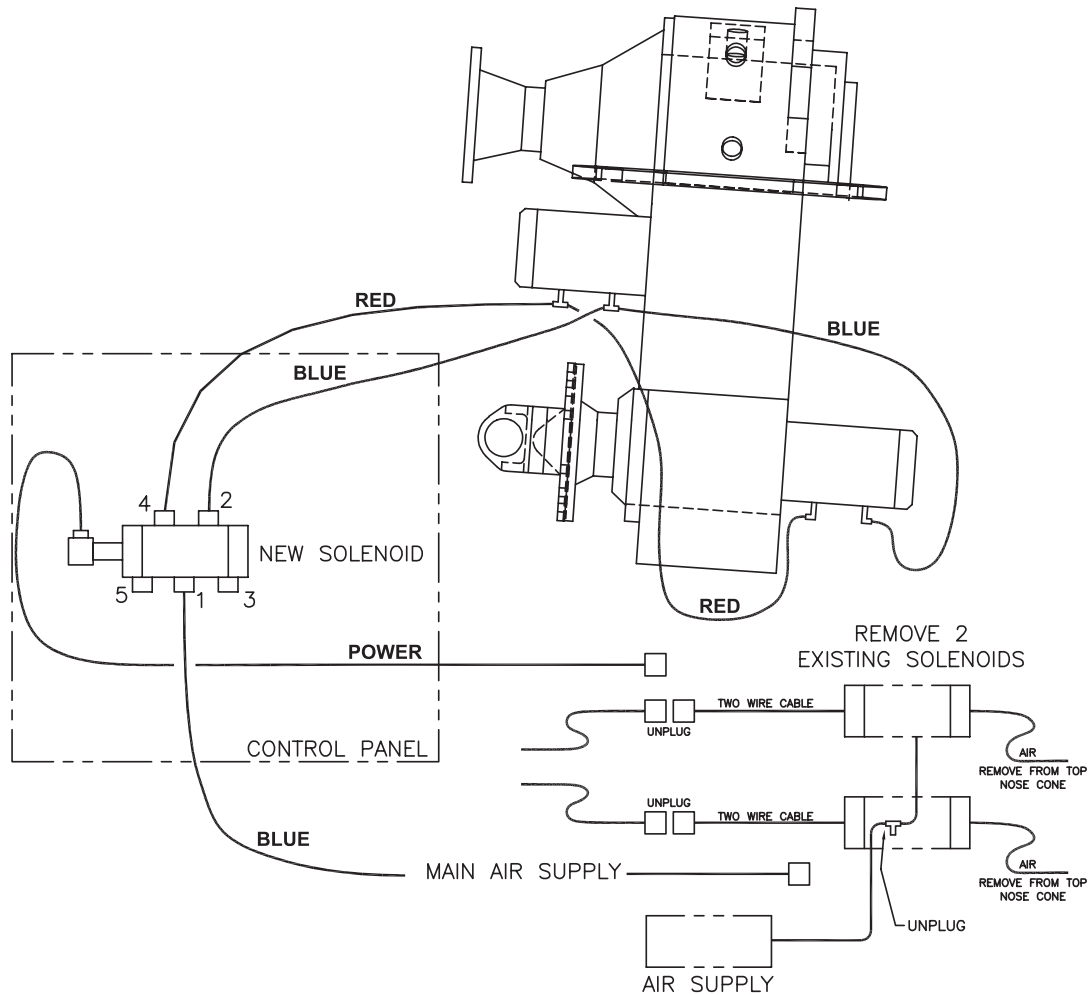


Fig. 5

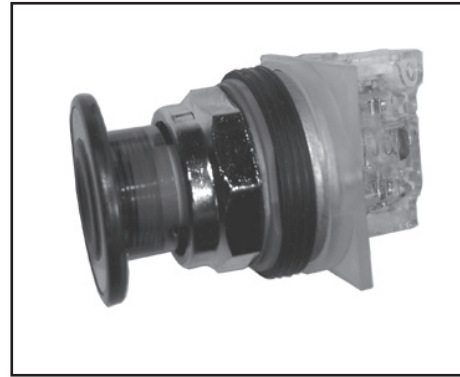


Retrofit Instructions for Air Solenoid Replacement – Dana Transfer Case Upgrade

1. Mount air solenoid valve to back of control box. Ports #2 and #4 should be on top.
2. Unplug Waytech electrical connectors on two existing solenoids. **Do not unplug the solenoid for PTO engagement.**
3. Remove the two air lines to these solenoids from the upper nose cone on the transfer case. These are quick disconnect style air fittings. Push the head of the fitting in while pulling on the air line. It will pop out.
4. Unhook the main pressure line feeding the two solenoids and install coupler Part #479160.
5. Unbolt both solenoids and remove them and the loose air lines connected to them from the unit.
6. Attach the "RED" airline from Port #4 of the solenoid valve to the open fitting on the front port of the upper nose cone on the transfer case.
7. Attach the "BLUE" air line on Port #2 of the solenoid valve to the open fitting on the back port of the upper nose cone of the transfer case.
8. Attach the "BLUE" air line from Port #1 on the solenoid to the coupler installed in the main pressure line in Step #4.
9. Plug the Waytech electrical connector (located on the two wire cable connected to the air solenoid valve) into either of the two connectors previously unplugged in Step #2.
10. Tie-wrap air lines and wires and test the unit.

Push-Pull Maintained Switch

Part No.	Description
1191689	Push/Pull-On/Off switch used in electrical circuits of many Guzzler products



Joystick

Part No.	Description
191138	Dual axis joystick used on High Rail boom (Fig. 1)
1191291	Microswitch for 191138 joystick
1191658	Forward/Reverse joystick used on High Rail creep drive system (Fig. 2)
1191073	Panel box used for dual axis joystick, 6" x 6" x 4" NEMA (152 mm x 152 mm x 101 mm)
1191353	Proportional joystick used on early model High Rail units with PTO driven hydraulic pump



Fig. 1



Fig. 2

Wiring Harness

Main wiring harness for Guzzler Classic/ACE.

Part No.	Description
191362A	Early Model
191362B	New Style — works with control panel shown on page H-4

