

ORPHAN CARE PARADIGM SHIFT

How faith leaders can help more orphaned children than ever get home to permanent loving families

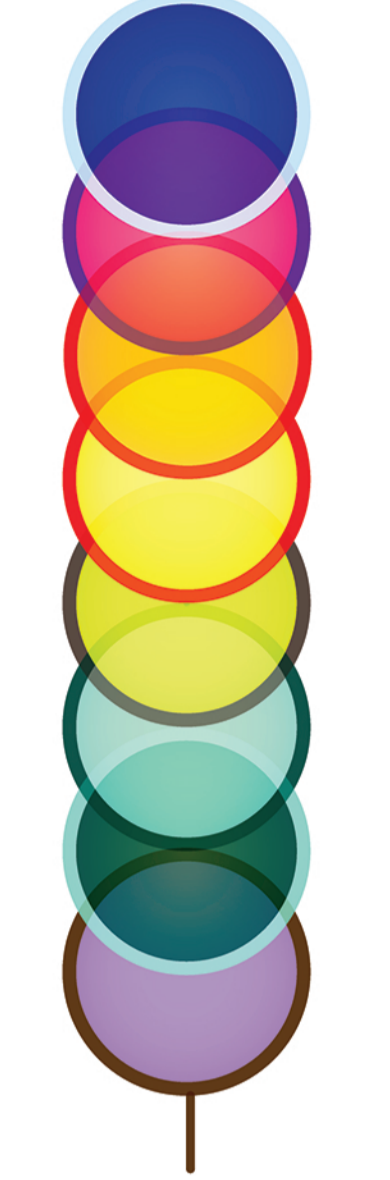
THE CHURCH HAS SACRIFICED SO MUCH TO EXPRESS THEIR LOVE AND COMPASSION FOR AT-RISK KIDS. HOWEVER, GOOD INTENTIONS TO SUPPORT INSTITUTIONAL CARE HAS LED TO UNFORTUNATE OUTCOMES THAT KEEP FAMILIES SEPARATED UNNECESSARILY.

Research, science, and scripture all agree that God's best design for children is found in families.

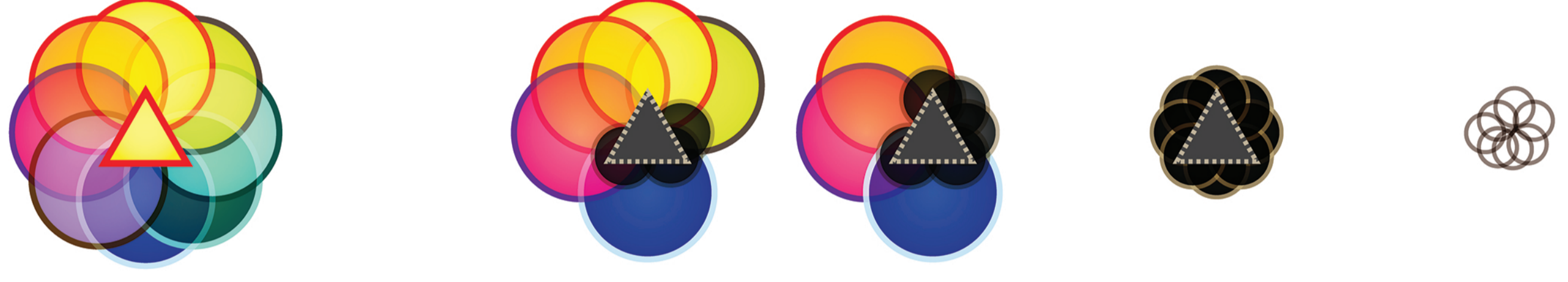
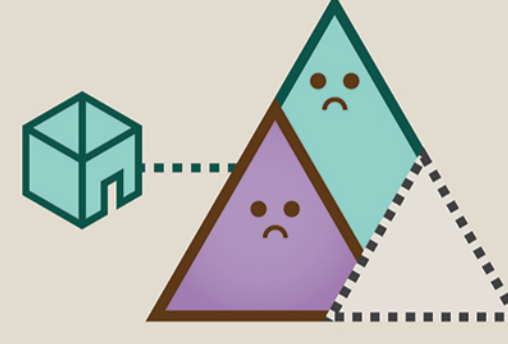
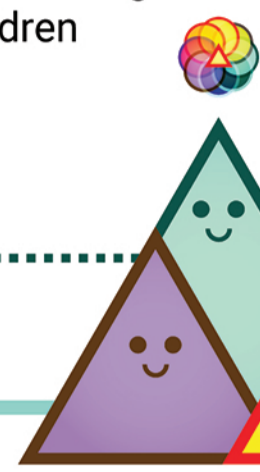
Children who develop outside of families experience; delays in cognitive development, emotional attachment disorders, behavioral issues, and poor mental health outcomes.



CHILDREN'S CARE ESSENTIALS



- FOOD
- SHELTER
- CLOTHING
- EDUCATION
- HEALTH CARE
- ATTACHMENT TO CAREGIVER
- PROTECTION FROM HARM
- EMOTIONAL & PSYCHOLOGICAL DEVELOPMENT



<p>FAMILY CARE IS BEST</p> <p>A child's essential needs are fulfilled in a loving family.</p> <p>Family care can come from a mom, dad, aunt, uncle, adult cousin, grandma or grandpa.</p> <p>If the family is unavailable then children need a caregiver to adopt them.</p>	<p>FAMILY SEPARATION CRISIS</p> <p>POVERTY, WAR, NATURAL DISASTER, FAMILY CONFLICT, CORRUPTION, EDUCATION & TRAFFICKING HAVE CREATED A FAMILY SEPARATION CRISIS.</p>	<p>BEST-CASE INSTITUTIONAL CARE</p> <p>High-quality institutions can meet children's physical needs for food, shelter, clothing, education, and health care.</p> <p>However, many are poorly equipped to care for children's psychological and emotional needs and cannot replace the parent/child attachment.</p>	<p>WORST-CASE INSTITUTIONAL CARE</p> <p>Poorly run or corrupt institutions promote practices that leave children traumatized.</p> <p>Many use child sponsorship models, adoption practices, and visiting mission teams to embezzle money for themselves while separating children from families and subjecting them to exploitation, abuse, slavery and trafficking.</p>	<p>STREET LIFE (NO CARE)</p> <p>Millions of vulnerable youth run to the city in search of empty beds in orphanages and schools. When beds are full, streets pile up with kids.</p> <p>Every day a child is separated from their family is another day of trauma. This ultimately stunts development and hinders successful adult outcomes.</p>	<p>ADULTHOOD</p> <p>Street youth and orphanage alumni are:</p> <ul style="list-style-type: none"> • 10x more likely to go into prostitution • 40x more likely to have a criminal record • 500x more likely to take their own life <p>Tragically, an estimated 6-8 million kids are growing up in orphanages and another 100 million kids are living alone on the streets.</p>
--	---	---	---	---	---

80% OF ORPHANS **AREN'T ACTUALLY ORPHANS** RATHER, THEY HAVE AT LEAST ONE LIVING RELATIVE WHO COULD TAKE CARE OF THEM.

MANY GLOBAL AND NATIONAL LEADERS ARE RESPONDING TO THE FAMILY SEPARATION CRISIS. THEY BELIEVE THE SOLUTION IS TO SHUT DOWN ORPHANAGES – BUT THERE IS A BETTER WAY TO HELP.

IT IS TIME FOR THE CHURCH TO STEP UP & LEAD THE CHARGE.

TOGETHER, LET'S REDEEM INSTITUTIONS INTO FAMILY SUPPORT CENTERS.

MAKE THE SHIFT

SHIFT THE MINDSET

Permanent family becomes the primary goal and effort. Every child is to be reunited whenever possible, adopted whenever necessary.

SHIFT THE MONEY

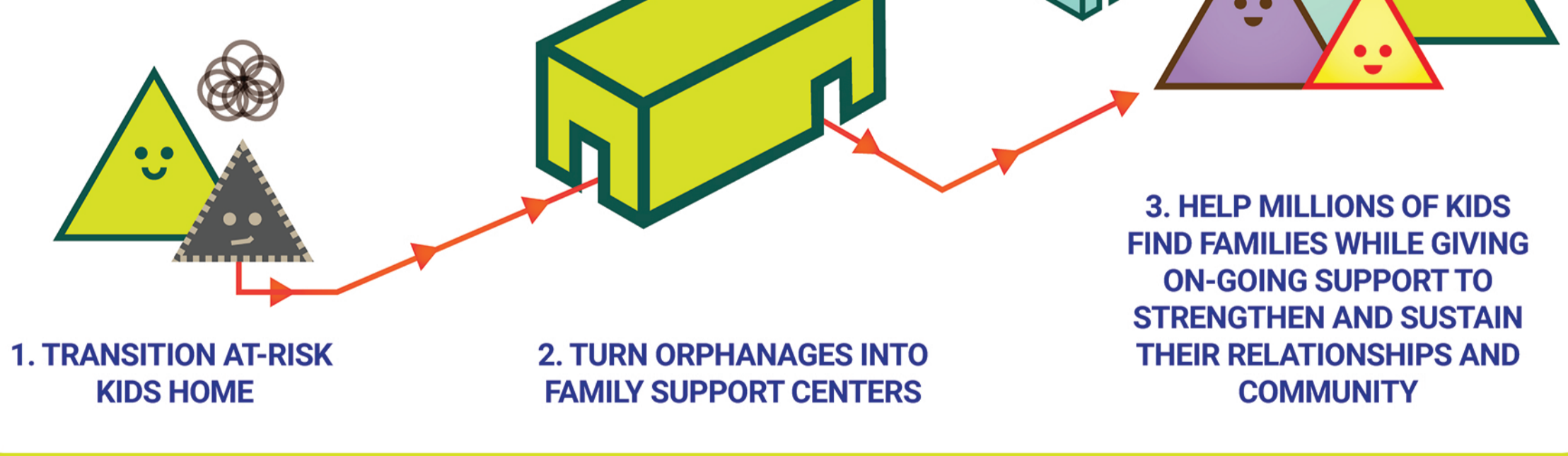
Fund boards, churches, and individuals by continuing sponsorships, while directing them away from long-term care and into family care centers that rehabilitate and reunite families.

IN ORDER TO

SHIFT THE MODEL

Get children home, not housed. Revitalize operations to rehabilitate kids from trauma then recruit and equip loving parents to restore the children's hearts and minds.

HOW IT WORKS



REUNIFICATION WHENEVER POSSIBLE

A social worker finds safe biological family for the children to return home to and then provides ongoing case management in the home. Typically, 80% of kids in orphanages or foster care have the option of returning home to loving biological family.

ADOPTION WHEN NECESSARY

If biological family is not an option, social workers find alternative families that can provide a permanent home for children. Typically, 20% of kids in orphanages have no biological family to care for them. Adoption is then needed.

ALWAYS FAMILY

The orphanage transforms into a family support center and helps more vulnerable children return to family. There are millions more children living on the streets currently who need help going home.

The way we participate might look different but we ALL can do something.

ARE YOU IN?