

Certification for  
Emotional Intelligence

# Certified EQ-i 2.0® & EQ 360® Practitioner Program

Licensed by  
Multi-Health Systems Inc., Canada

## INTRODUCTION

The EQ-i 2.0 assessment is developed by Multi-Health System Inc. (MHS) - A leading publisher of scientifically validated assessments for more than 30 years, based on extensive feedback, to assessment items, updated norms and rigorous reliability and validity studies.

**This is the first scientifically validated measure of EI.** Paired with research from premier organizations, it is currently used in over 60+ countries for all level organizations from Fortune 100 companies to government and military services. The EQ-i reports are designed with clear instructions, interpretation guidelines and results-driven content which allows you as the practitioner to lead your clients to success.

### Organizations that adopted EQ-i 2.0 Assessment



### EQ-i 2.0 & EQ 360 is suitable for:

Organizational Development | Team Development | Employee & Leadership Development | Succession Planning | Coaching | Talent Acquisition | Culture Change & Engagement |

### Who should attend this program?

- Professional coaches looking to unleash your client's potential and fast-track success.
- Professional trainers involved in personal, leadership and management development.
- HR consultants and practitioner offering services for personal development of employees and leadership.

### Why become a certified EQ-i 2.0 Practitioner with us?



The most well researched  
and accepted EQ-i model in  
the world



Internationally recognized  
certificate from  
MHS, Canada



Gain support from a  
global network of experts  
in the EI field



Each assessment  
comes with both client  
and coach reports

## INTERESTING RESEARCH FINDINGS

60%

### Effective for Leadership Development

of those who use Emotional Intelligence assessments say the reports are effective or very effective in impacting their leadership development.

36%

### Great compliment for Leadership Coaching

of executives reported effective EI performance when the assessment is incorporated in their leadership coaching.

*Based on research done by Human Capital Institute (HCI) and Multi-Health System (MHS) with over 784 respondents from over 500 organizations around the world.*

## THE EQ-i 2.0 FEATURES



- + A Total EI score with 5 composite scores measuring 5 distinct aspects of emotional and social functioning.
- + 15 Subscales that dive deeper into your client's profile
- + A Well-Being Indicator that measures your client's level of happiness; resulting in additional development opportunities.

## THIS CERTIFICATION COURSE INCLUDES

### A full set of Certification Guide

- + Self-paced e-learning modules and pre-work from MHS
- + Soft copy of The EQ Edge, by Dr. Steven Stein and Howard Book
- + Softcopy of Participant Manual
- + EQ-i 2.0 Workplace Self-Assessment

- Two (2) complimentary reports (EQ-i Workplace & Leadership Report) upon completion of program
- Free coaching and guided debriefing session with our EQ-i Master Trainer & Coach
- Membership in a large, growing international EI community with support, training, and coaching opportunities.
- Certificate of completion authorizing you as eligible to purchase, administer and interpret EQ-i assessments.
- Free online account to administer and score assessments, and access to MHS EQ-i resources.



+6017- 679 4197

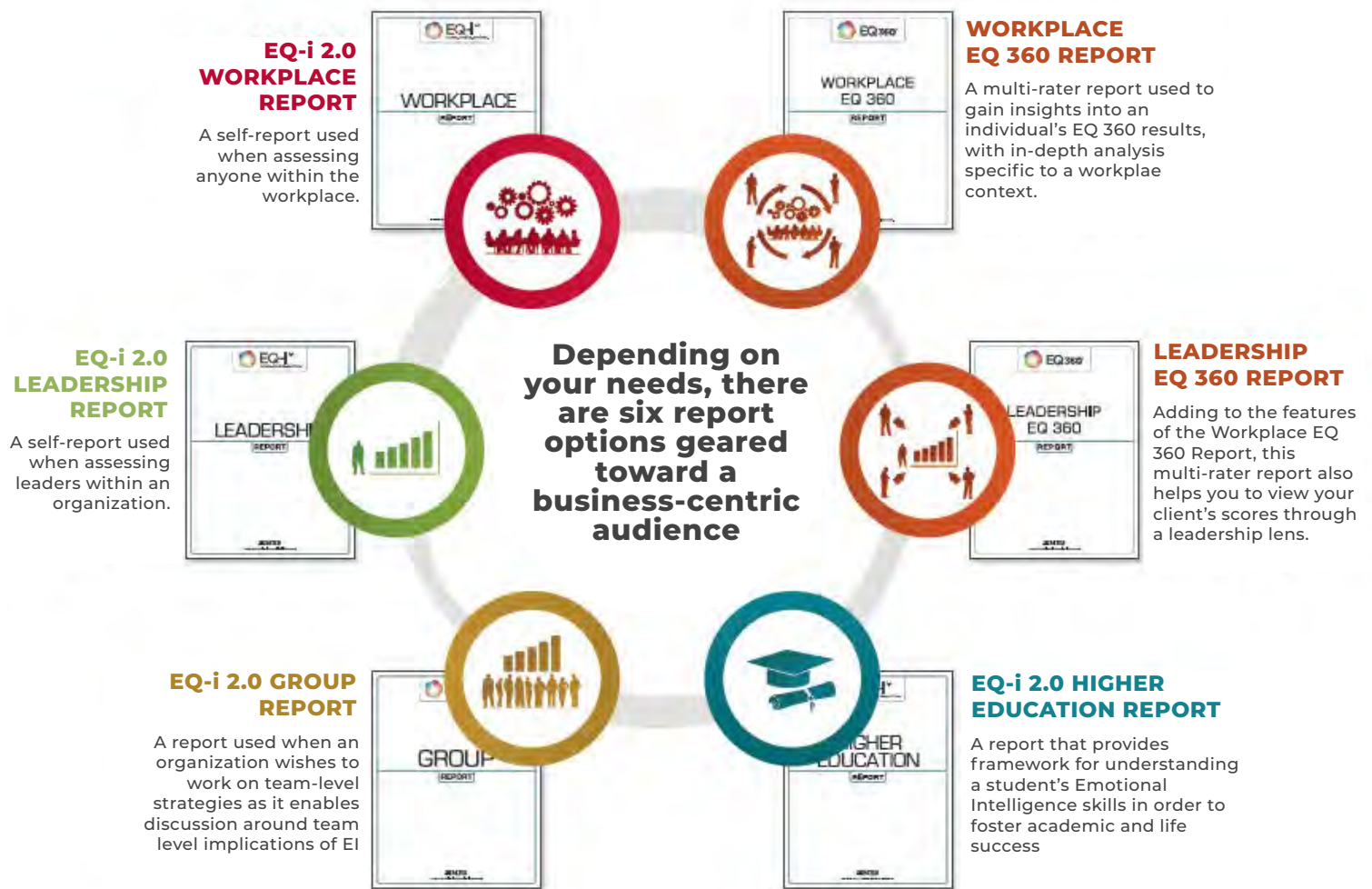


karen.chong@fishcamp.com.my



www.fishcamp.com.my

## AVAILABLE REPORTS



### CLIENT REPORT

The Client Report provides an introduction to the EQ-i 2.0 model and a detailed, personalized interpretation for each of the 15 subscales complete with strategies for action and a development plan.



### THE COACH REPORT

The Coach Report helps you better understand how results were derived, allowing for better interpretation, and enabling valuable client feedback. You will be provided with follow up questions, item level responses, and a guide on how to conduct a debrief.

**Both coach and client version is included in every reports**



+6017- 679 4197

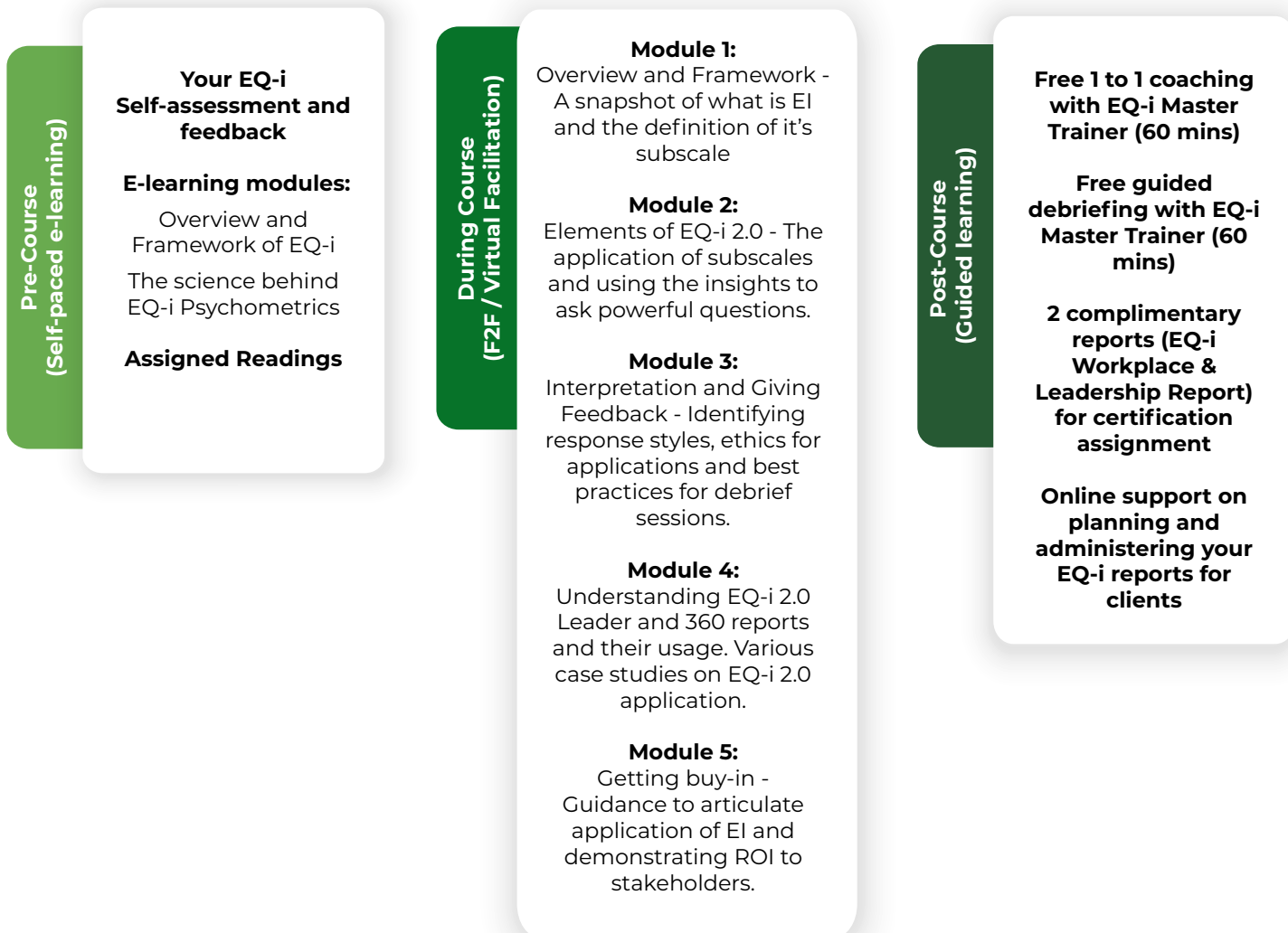


karen.chong@fishcamp.com.my



www.fishcamp.com.my

# YOUR LEARNING JOURNEY WITH US



## PROGRAM FEE

**RM5,900/pax**

\*subjected to 6%SST



**FREE** 1 deck of EQ cards

### GROUP DISCOUNT

RM200 each for 2 pax or more sign ups from the same organization.

\* subjected to 6% SST

## UPCOMING SESSION

**July 2021 (12, 13, 16 July)**

**November 2021 (15, 16, 19 November)**

Day 1 & 2 : 9.00am - 5.00pm

Day 3 : 9.00am - 12.30pm



+6017- 679 4197



karen.chong@fishcamp.com.my



www.fishcamp.com.my

## WHAT DID PEOPLE SAY ABOUT US

---



Theo is a trusted partner for me and my team. He brings to the table so much of depth knowledge on psychology, personality, behaviour and translates the learning into something which is easily comprehensible. His humility wows us all the time and willingness to always share, flexibility in approach and committing to deliver solutions the right way for us is commendable. Thanks Theo for the great partnership.

**Pritinderjeet Kaur,**  
**Head of Learning & Talent Development, HSBC**



It was a pleasure being coached by Ashley on emotional intelligence. She knows how to take me to a resourceful place and then holds the space so well that I'm able to check in with myself and come up with healthy ways of moving forward. I particularly liked how she frame my goals into actionable steps based on the EQ inventory, so that everything was simple and clear, and tailored to my needs.

**Bee-Lee See**  
**Senior Consultant, Consider iProspect**

