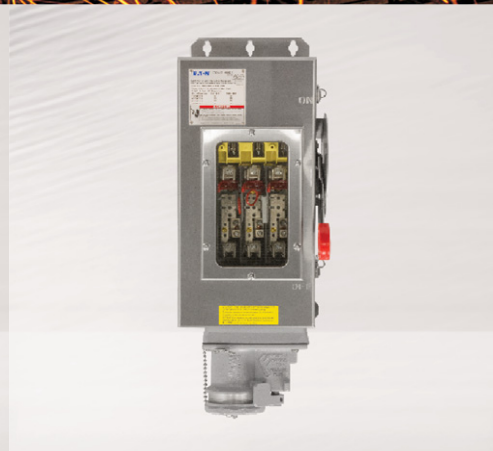


Plugs & receptacles  
Arktite® WSRD interlocked receptacles

CROUSE-HINDS  
SERIES

# Arktite®

interlocked receptacles  
for heavy industrial areas



**EATON**

*Powering Business Worldwide*



A full-page background image of an industrial setting, likely a foundry or steel mill. The scene is dominated by a large, dark, textured object in the foreground, possibly a mold or a piece of machinery. In the background, there are various industrial structures, including pipes, ladders, and platforms. A bright orange glow emanates from the upper left, suggesting molten metal or intense heat. Several thin, bright orange lines, resembling sparks or molten droplets, fall from the upper left towards the bottom left corner. The overall color palette is a mix of dark blues, greys, and bright oranges.

# Safe, portable power.



# Arktite

## interlocked receptacles

Arktite interlocked receptacles prevent engagement and disengagement of the plug under load, providing safe, portable connections and extended product life.

Fusible or non-fusible versions available in 30, 60 and 100 amp configurations.

### Engineered for safety:

- The switch enclosure and receptacle are interlocked with the body and operating mechanism. The enclosure cannot be opened when the plug is engaged and switch is in ON position
- Switch cannot be turned on with enclosure door open
- Interlock mechanism on the receptacle prevents plug from being disengaged under load

### Applications:

- Used as a service outlet for portable or fixed electrical equipment, such as generators, compressors, welders, portable tools, conveyors, lighting systems and similar equipment
- Designed for use in non-hazardous areas where dust, moisture and corrosion may be a problem
- Designed for flush or surface mounting
- A fusible switch, when used, provides short circuit protection



## Specifications

### Electrical ratings:

- 3- and 4-pole; fusible or non-fusible
- 240 VAC, 250 VDC, 480 VAC, 600 VAC
- 30, 60, 100 amp
- Max. HP ratings: 15 to 75 HP

### Sheet steel model

#### Certifications:

##### NEC/CEC standard:

- Enclosure Type 3R, 12

##### UL standard:

- UL Listed – UL98, UL1682

##### cUL standard:

- cUL Listed – Certified by UL to CSA standards C22.2 Nos. 4, 182.1

#### Standard materials:

- Enclosure: sheet steel
- Hardware: stainless steel
- Receptacle housing: copper-free aluminum
- Contacts: naval brass
- Interlock mechanism: stainless steel

#### Standard finishes:

- Aluminum: natural
- Brass: natural

### Stainless steel model

#### Certifications:

##### NEC/CEC standard:

- Enclosure Type 4, 4X

##### UL standard:

- UL Listed – UL98, UL1682

##### cUL standard:

- cUL Listed – Certified by UL to CSA standards C22.2 Nos. 4, 182.1

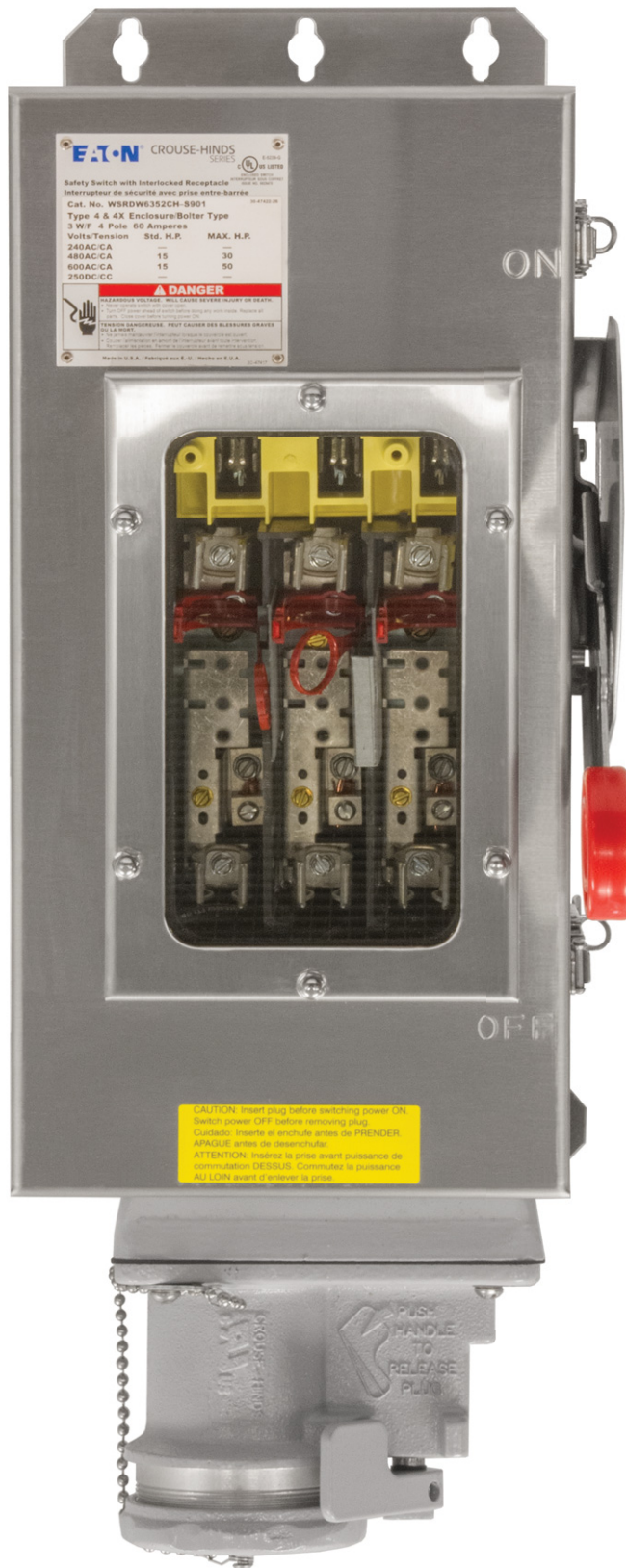
#### Standard materials:

- Enclosure: Type 304 stainless steel
- Hardware: stainless steel
- Receptacle housing: copper-free aluminum
- Contacts: naval brass
- Interlock mechanism: stainless steel

#### Standard finishes:

- Stainless steel: natural (enclosure)
- Aluminum: Corro-free™ epoxy powder (receptacle)
- Brass: natural (contacts)

## Features and benefits

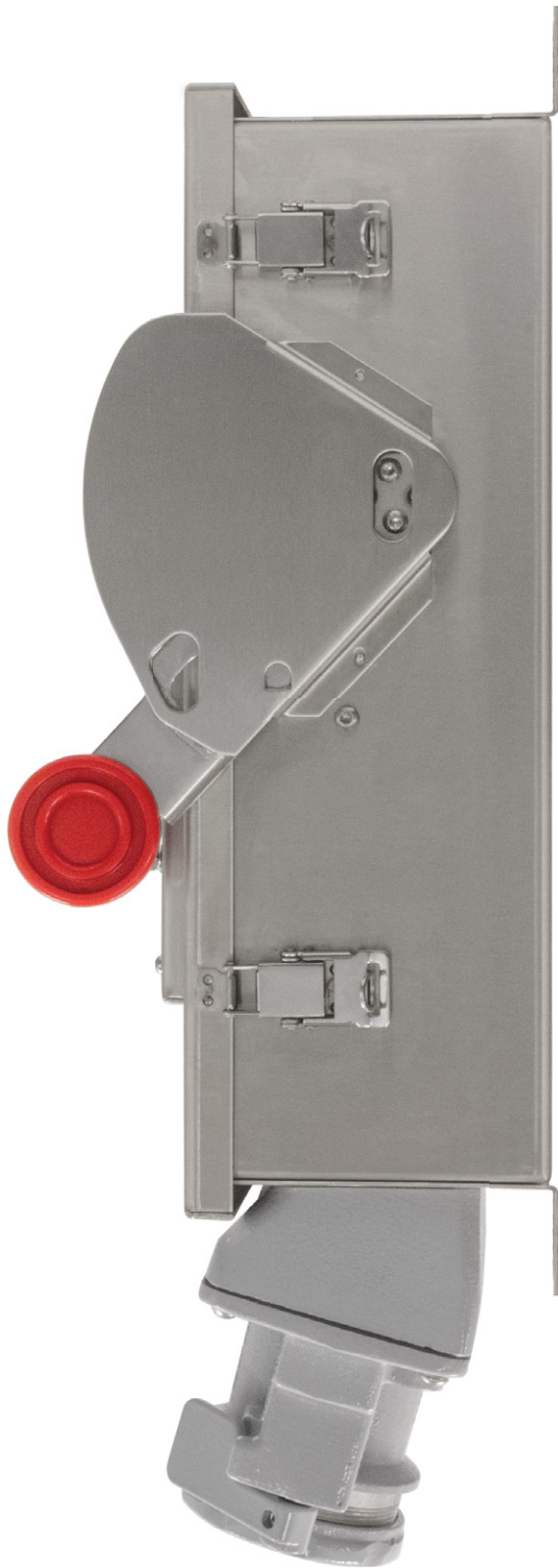


### Easy access and built to last:

- Optional window allows viewing of both visible blade and indicating type fuses
- HP rated enclosed switch for motor load applications
- Optional 22.5° rotated interior of receptacle allows for differentiation when used on circuits of different voltages
- Ground bar supplied as standard and connected to 4th wire in receptacle

### Engineered for safety:

- The switch enclosure and receptacle are interlocked with the body and operating mechanism. The enclosure cannot be opened when the plug is engaged and switch is in ON position
- Switch cannot be turned on with enclosure door open
- Interlock mechanism on the receptacle prevents plug from being disengaged under load
- Factory adjusted interlock rod assures optimal interface with receptacle



#### Rugged enclosure design:

- Tool-free cover latches for quick and easy access
- Corrosion- and impact-resistant
- Type 4X, watertight and IP66 ratings (model dependent)
- Door with seamless gasket prevents moisture ingress
- Handle with insulated grip features a positive stop in both ON and OFF positions
- Complies with OSHA lockout/tagout requirements
- Corro-free™ powder coat epoxy and threaded cap ensure added corrosion resistance (stainless steel versions)
- Split pin, self-wiping naval brass contacts in receptacle provide nearly 360° contact and ensure better contact life

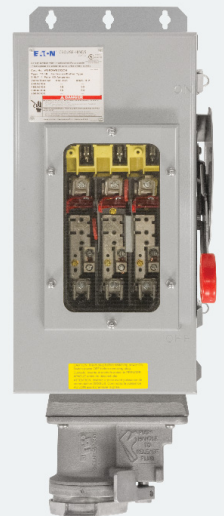


#### Arktite plugs:

- Plug locks into receptacle, providing positive worry-free power engagement
- Locking ring provides a watertight seal at connection point

Available in sheet or stainless steel

#### Sheet steel models



#### Stainless steel model





# Ordering information: receptacle

## Part number example

**WSRDW33542CH-S901-S483-S4**

Arktite interlocked receptacle with window, Eaton Cutler-Hammer 30 amp disconnect switch, non-fusible, style 2, stainless steel, auxiliary contact and 22.5° rotated plug interior

WSRD

Series

WSRD

Arktite interlocked receptacle

W

Door style

blank

Solid door

W

Windowed door

3

Voltage

3

30 amp

6

60 amp

10

100 amp

354

Fusibility

35

Fusible

354

Non-fusible

Eaton Cutler-Hammer safety disconnect switch

2

Style

1

Style 1 (3W/3P)

2

Style 2 (3W/4P)

CH

-

Enclosure material/finish

S901

Stainless steel, natural finish; grey epoxy painted receptacle

blank

Stamped steel, grey epoxy painted; natural finish receptacle

-

S901

-

S483

-

S4

Options

S483

Factory installed auxiliary contacts

S4

Rotated interior (22.5° right)

If ordering both options, list as stated in the above part number example.

## Horsepower ratings

Amps	3-phase: 480 VAC		3-phase: 600 VAC	
	Std.	Max.	Std.	Max.
30	5	15	7.5	20
60	15	30	15	50
100	25	60	30	75

**NOTE:** Style 1 and style 2 have the same horsepower ratings. Fusible models have the same horsepower rating as non-fusible models when used with the appropriate time delay fuses.

## Accessories (ordered separately)

<b>DH030NK</b>	Neutral kit – 30-60A DH
<b>DH100NK</b>	Neutral kit – 100A DH
<b>DS16CP</b>	Control pole kit (for 2P, 3P switches) – 400-600A DG, 30-1200A DH, 30-800A DT
<b>DS200EK1</b>	Auxiliary contact kit – All switches (except 30-100A DG switches) 1 NO/1 NC
<b>DS200EK2</b>	Auxiliary contact kit – All switches (except 30-100A DG switches) 2 NO/2 NC
<b>DS30FP</b>	Fuse puller kit – 30-60A
<b>DS100FP</b>	Fuse puller kit – 100A DH
<b>DS16FK</b>	"R" fuse adapter kit – 30A 600V DH & DT, 60A 240V DH & DT, 60A DG
<b>DS36FK</b>	"R" fuse adapter kit – 100A 240-600V DH, DT

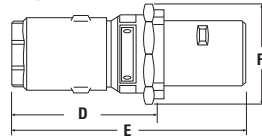
# Ordering information: plugs

## APJ/NPJ plugs

Style 1: 3-wire, 3-pole	Style 2: 3-wire, 4-pole	OD of cable or flexible conduit	Amps Maximum volts
	<b>APJ3485</b>	0.60 to 1.20"	30A 250 DC, 600 AC
<b>APJ3375</b>	<b>NPJ3483</b>	0.55 to 0.70"	
	<b>NPJ3484</b>	0.70 to 0.85"	
	<b>APJ6485</b>	0.75 to 1.15"	60A 250 DC, 600 AC
<b>APJ6375</b>	<b>NPJ6484</b>	0.75 to 1.07"	
	<b>NPJ6485</b>	1.07 to 1.35"	
	<b>APJ10487</b>	1.00 to 1.70"	100A 250 DC, 600 AC
<b>APJ10377</b>	<b>NPJ10486</b>	0.93 to 1.21"	
	<b>NPJ10487</b>	1.21 to 1.50"	

## Plug dimensions

### APJ



### APJ: 3-pole

	30A	60A	100A
<b>D</b>	4 13/16 [122]	5 3/4 [146]	6 9/16 [167]
<b>E</b>	6 1/2 [165]	8 1/2 [216]	10 1/8 [257]
<b>F</b>	2 5/16 [59]	3 3/8 [92]	3 3/4 [95]

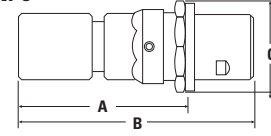
Dimensions: Inches [mm]

### APJ: 4-pole

	30A	60A	100A
<b>D</b>	4 13/16 [122]	5 13/16 [148]	6 7/8 [168]
<b>E</b>	6 1/2 [165]	8 1/2 [216]	10 1/8 [257]
<b>F</b>	2 5/16 [59]	3 3/4 [95]	4 1/8 [105]

Dimensions: Inches [mm]

### NPJ



### NPJ: 4-pole

	30A	60A	100A
<b>A</b>	8 1/2 [216]	9 1/2 [241]	11 1/4 [286]
<b>B</b>	7 [178]	6 13/16 [173]	7 3/4 [197]
<b>C</b>	3 3/16 [81]	4 [102]	4 1/4 [108]

Dimensions: Inches [mm]

# Dimensions

## Solid door (no window) model

	30A	60A	100A
A	5.50 [140]	5.50 [140]	5.50 [140]
B	8.94 [227]	8.44 [214]	11.14 [291]
C	7.73 [196]	7.73 [196]	11.48 [291]
D	10.21 [259]	10.20 [259]	10.21 [259]
E	8.22 [209]	8.22 [209]	8.22 [209]
F	5.50 [140]	5.50 [140]	5.50 [140]
G	15.82 [402]	15.82 [402]	21.69 [551]
H	19.09 [485]	19.09 [485]	24.96 [634]
I	23.43 [595]	24.60 [624]	31.05 [788]
J	5.97 [152]	7.14 [181]	7.73 [196]

Dimensions: Inches [mm]

## Mounting (center-to-center)

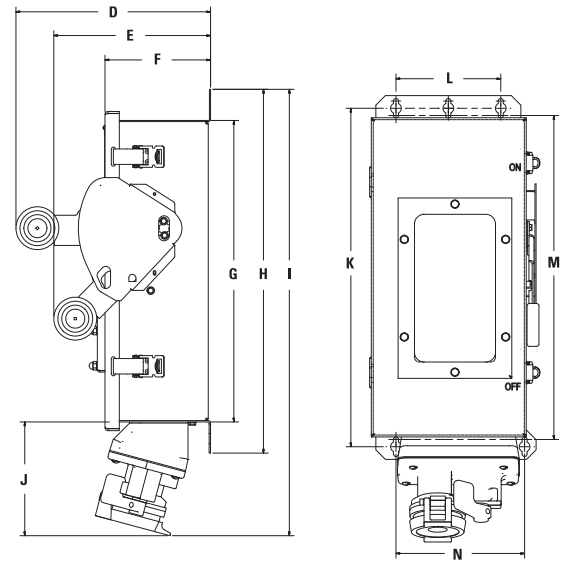
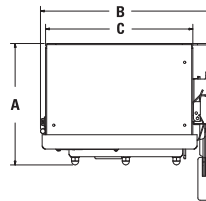
	30A	60A	100A
K	17.76 [451]	17.76 [451]	23.63 [600]
L	5.50 [140]	5.50 [140]	8.50 [216]
M	17.00 [432]	17.00 [432]	22.87 [581]
N	6.75 [171]	6.75 [171]	9.75 [248]

Dimensions: Inches [mm]

## Windowed door model

	30A	60A	100A
A	6.37 [162]	6.37 [162]	6.37 [162]
B	8.94 [227]	8.40 [213]	10.76 [273]
C	7.73 [196]	7.73 [196]	11.97 [304]
D	10.21 [259]	10.21 [259]	10.21 [259]
E	8.22 [209]	8.22 [209]	8.22 [209]
F	5.54 [141]	5.54 [141]	5.54 [141]
G	15.82 [402]	15.82 [402]	21.69 [551]
H	19.09 [485]	19.09 [485]	24.96 [634]
I	23.43 [595]	24.60 [624]	31.05 [788]
J	5.97 [152]	7.14 [181]	7.73 [196]

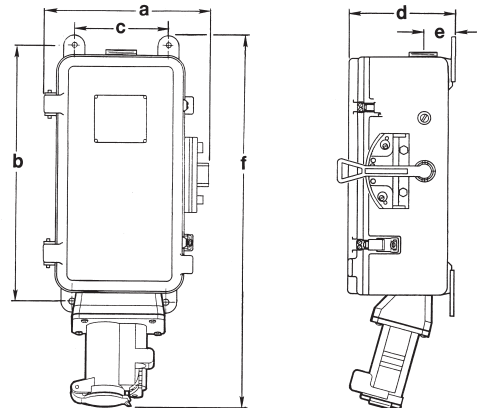
Dimensions: Inches [mm]



# Additional models: WSR



## Dimensions:



	30A	60A	100A
A	11 3/4 [298]	11 3/4 [298]	14 7/8 [378]
B	20 1/16 [510]	20 1/16 [510]	26 5/16 [668]
C	6 9/16 [167]	6 9/16 [167]	9 9/16 [243]
D	7 1/4 [184]	7 1/4 [184]	8 1/4 [210]
E	2 15/32 [63]	2 15/32 [63]	2 7/8 [73]
F	27 11/16 [703]	28 11/16 [703]	35 3/8 [899]

Dimensions: Inches [mm]

## Certifications:

NEC/CEC standard:

- Enclosure: NEMA 3R, 4, 12

UL standards:

- UL98
- cUL Standard C22.2 No. 4

## Standard materials:

- Enclosure: copper-free aluminum
- Hardware: stainless steel
- Receptacle housing: copper-free aluminum
- Contacts: brass

## Ordering information:

Switch type	System	Amps	Conduit entry†	Part number	Maximum horsepower rating		
					240 VAC	480 VAC	600 VAC
Fusible	Style 1: 3-wire, 3-pole	30	1.00	<a href="#">WSR3351*</a>	7.5	15	20
		60	1.25	<a href="#">WSR6351*</a>	15	30	50
		100	1.50	<a href="#">WSR10351*</a>	30	60	75
	Style 2: 3-wire, 4-pole	30	1.00	<a href="#">WSR3352*</a>	7.5	15	20
		60	1.25	<a href="#">WSR6352*</a>	15	30	50
		100	1.50	<a href="#">WSR10352*</a>	30	60	75
Non-fusible	Style 1: 3-wire, 3-pole	30	1.00	<a href="#">WSR33541</a>	7.5	15	20
		60	1.25	<a href="#">WSR63541</a>	15	30	50
		100	1.50	<a href="#">WSR103541</a>	30	60	75
	Style 2: 3-wire, 4-pole	30	1.00	<a href="#">WSR33542</a>	7.5	15	20
		60	1.25	<a href="#">WSR63542</a>	15	30	50
		100	1.50	<a href="#">WSR103542</a>	30	60	75

\* Arranged for NEC Class H fuses. May be converted to NEC Class J fuses.

† Furnished with reducer, which may be removed to obtain one size larger opening. Locknut and bushing must meet NEC requirements.

**U.S. (global headquarters):  
Eaton's Crouse-Hinds Division**

1201 Wolf Street  
Syracuse, NY 13208

(866) 764-5454  
FAX: (315) 477-5179  
FAX Orders Only:  
(866) 653-0640

[crousecustomerctr@eaton.com](mailto:crousecustomerctr@eaton.com)

**For more information:**

If further assistance is  
required, please contact  
an authorized Eaton  
Distributor, Sales Office,  
or Customer Service  
Department.

**Canada**

Toll Free: 800-265-0502  
FAX: (800) 263-9504  
FAX Orders only: (866) 653-0645

**Mexico/Latin America/Caribbean**

52-555-804-4000  
FAX: 52-555-804-4020  
[ventascentromex@eaton.com](mailto:ventascentromex@eaton.com)

**Europe (Germany)**

49 (0) 6271 806-500  
49 (0) 6271 806-476  
[sales.CCH.de@cooperindustries.com](mailto:sales.CCH.de@cooperindustries.com)

**Middle East**

971 4 8066100  
FAX: 971 4 8894813  
[chmesales@eaton.com](mailto:chmesales@eaton.com)

**Singapore**

65-6645-9888  
FAX: 65-6297-4819  
[chsi-sales@cooperindustries.com](mailto:chsi-sales@cooperindustries.com)

**China**

86-21-2899-3600  
FAX: 86-21-2899-4055  
[cchsales@cooperindustries.com](mailto:cchsales@cooperindustries.com)

**Korea**

82-2-3484-6783  
82-2-3484-6778  
[CCHK-sales@cooperindustries.com](mailto:CCHK-sales@cooperindustries.com)

**Australia**

61-2-8787-2777  
FAX: 61-2-9609-2342  
[CEASales@cooperindustries.com](mailto:CEASales@cooperindustries.com)

**India**

91-124-4683888  
FAX: 91-124-4683899  
[cchindia@eaton.com](mailto:cchindia@eaton.com)

**Eaton**  
1000 Eaton Boulevard  
Cleveland, OH 44122  
United States  
[Eaton.com](http://Eaton.com)

© 2015 Eaton  
All Rights Reserved  
Printed in USA  
Publication No. 5268-0417  
April 2017

Eaton is a registered trademark.

All other trademarks are property  
of their respective owners.