

Glass Block Solar Wall Tubes

Solar Wall Tubes are an easy and aesthetically pleasing way to let light into a building that is built with multi-width walls. The Solar Wall Tubes replace standard masonry units and allows increased light transmission. Daylighting is increasingly important in buildings today. The more daylight that enters a room, the less energy needed by the electrical systems in the building. Daylighting also has a positive effect on mood, atmosphere, and productivity.

Superior Thermal Performance

Solar Wall Tubes from Seves Glass Block are available in various sizes with your choice of Pattern and privacy levels. They are thermally broken and thus provide improved thermal performance. They are easy to install and are self-supporting when installed in a running bond wall. Do not install in stack bond CMU walls unless a lintel or bond beam is provided.

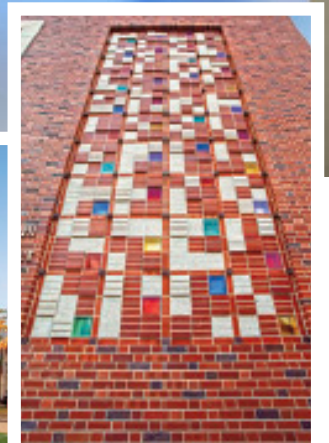
Solar Wall Tubes are available in 8" and 16" modules in various depths to meet wall thickness requirements.

NO LINTELS REQUIRED!

Maximum Daylighting

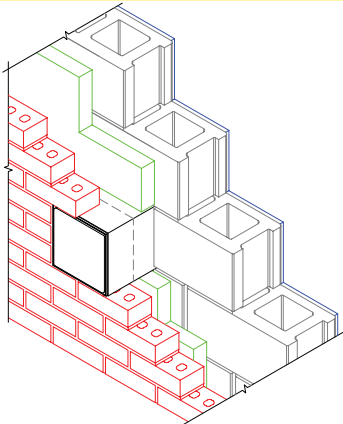
Solar Wall Tubes are perfect for commercial building walls where you want to bring in light without compromising the masonry look and feel of the building. The Glass Block Solar Wall Tubes mirror-like finish magnifies and reflects the light and solves many design issues related to single or double glass block installations in multi-width wall construction. It allows the architectural look of a single or double glass blocks on both sides of a thick wall. It provides a visually aesthetic look in the hollow area between the glass blocks.

As with single unit glass blocks, installation includes proper sealing between the edges of the wall and the tube on both the exterior and interior walls.



Test Results of the Solar Wall Tubes are as Follows:

Solar Wall Tube (SWT) Description	U-Value
8"x16" SWT with Hollow Glass Block	.21
8"x16" SWT with Solid Glass Block	.26
8"x16" SWT with Energy Savings Glass Block	.07
8"x8" SWT with Hollow Glass Block	.27
8"x8" SWT with Solid Glass Block	.27
8"x8" SWT with Energy Savings Glass Block	.11



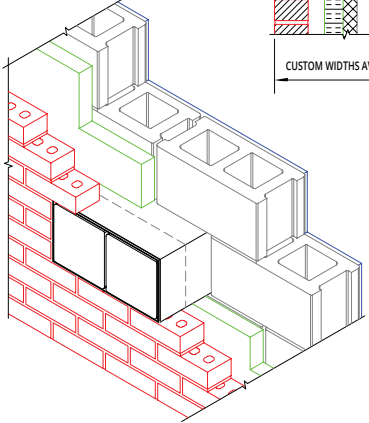
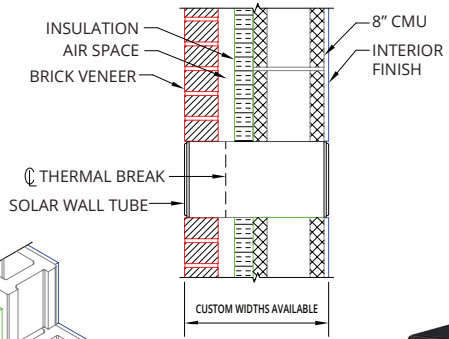
8" x 8" Solar Wall Tube,
VISTABRIK® Solid Glass Block
(90% visible light transmission)



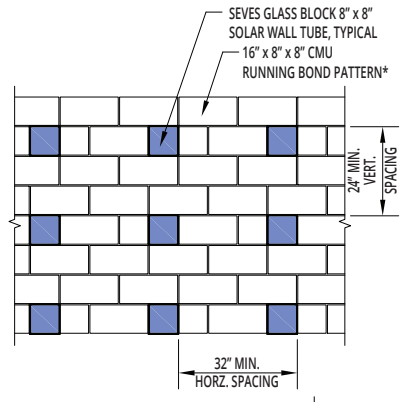
8" x 8" Solar Wall Tube, Energy Savings
NUBIO Pattern
(63% visible light transmission)



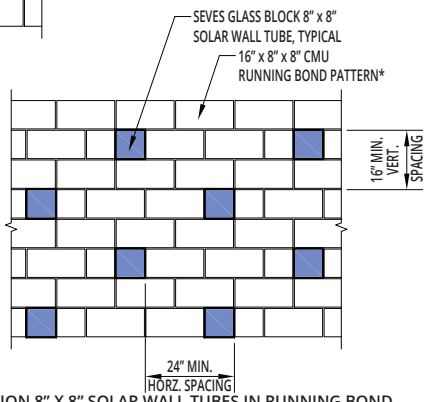
8" x 16" Solar Wall Tube,
ALPHA Pattern
(92% visible light transmission)



Recommended Spacing for Single Solar Wall Tube 8" x 8"
VISTABRIK® or 4" Premiere™ Series



ELEVATION 8" x 8" SOLAR WALL TUBES IN STACKED BOND



ELEVATION 8" x 8" SOLAR WALL TUBES IN RUNNING BOND

FOR STACKED BOND CMU OR FOR TIGHTER SPACING OF SOLAR WALL TUBES A LINTEL OR BOND BEAM SHOULD BE INCORPORATED

Seves Glass Block has a sales and technical support team that is ready to help you design, engineer and specify glass block solutions. Please visit our website at sevesglassblockinc.com

SEVES GLASS BLOCK INC.
CLEVELAND, OH 44147
1-440-627-6257
TOLL FREE 1-877-SEVES11

INQUIRY@SEVESGLASSBLOCK.COM



Distributed by:
GBA Architectural Products + Services
1213 Medina Road
Medina, Ohio 44256