



IRELY I21 - BENEFITS



A privately owned family enterprise

Overall System Benefits



Measurable Cost Reduction/Revenue Improvements

- Improved identification of buying opportunities
- Reduced human effort associated with managing business
- Reduced number/scale of errors associated with data entry
- Reduced time and effort in calculating valuations
- Reduced costs associated with headcount

Risk Reduction

- Reduced Market, Credit and Operational Risk
- Increased control, efficiency and flexibility to serve any size organization
- Improved visibility into daily positions/exposures

Intangible Benefits

- Improved counterparty relationships
- Improved ability to forecast business performance

Improving Access to Information for Better Decision Making

One of the primary goals of i21 system is to improve the availability of information to all users through an integrated system with advanced contract status view (all information in one place) and drill downs and drill arounds throughout the system.

Responding to Changes in Business and Markets

In a rapidly changing business and regulatory environment, i21 provide the tools and flexibility you need to manage changing business requirements.



Functional Benefits



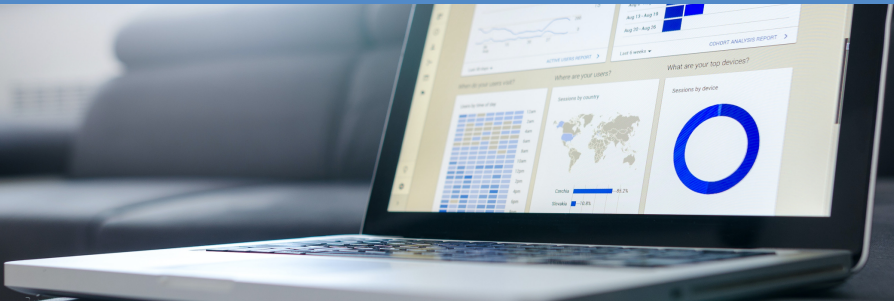
Commodity Procurement & Risk Management

Scope: Procurement, Futures, and Fixation orders

- Integrated & live risk management reporting
 - Position and risk are always known in real time
 - Data is consistent with actual transactions, not separate spreadsheet systems with the possibility of inconsistent data and errors
- Cost forecasting to avoid surprises and to test the impact of possible market scenarios for contingency business planning
- Considerable time savings on above two items to
 - permit more alternative planning scenarios and
 - free up valuable manpower for more value added activities
- Significantly enhance performance measurement of suppliers to influence procurement decisions and drive continuous improvements
- Place responsibility where it belongs, e.g. on Grower, Vendor, Shipping Line, etc. as appropriate
- Exception management with alert system drives focus to issues
- Broker statement reconciliation ensures accurate derivative positions are captured in i21
- Counterparty exposure helps ensure your business is running risk free and within limits stipulated by the finance department



Functional Benefits



i21 Financials

Scope: Mark to Market, Costing, Financial Integration

- Enhanced risk management using mark to market for open contracts
- Financial management requirement – mark to market for inventory and open orders
- Accrual process based upon anticipated vs actual costs at month end
- Integration to accounting system ensures consistent data (i21 system) with accounting results without dual entry of transactions

Logistics

Scope: Shipment Planning, Freight Rate Matrix, Back Office

- Automate logistics updates across all shipments to enable early proactive steps: avoid out of stock, better customer service, more efficient plant operation
- Document tracking
- More efficient & enhanced processing of ocean freight and other service costs
- Complete forward and backward traceability of commodities
- Enables tracking and control of warehouse and afloat/in-transit inventory data, including pier, vessel, trucker, arrival dates, and FDA releases



Functional Benefits



Integrated Document Management

Scope: Document Management System

- Repository for all documents, replaces the need for shared drives
- Documents already configured (like contract print, price fixation letter print, shipping instruction, instore letter) are automatically sent to Document Management System (DMS) when user sends the documents to the respective counterparty via i21 email
- Methodical way of arranging the documents. User can decide how the documents need to be stacked by creating the hierarchy of folders. Each contract created could be a folder and inside this folder there can be subfolders like contract print, price fixations, Shipping instructions etc,
- Scanner can be connected to i21 DMS which means all documents scanned can be directly sent to DMS and later assigned to different subfolders if need be

Collaborative Web Portal

Scope: Vendor Collaboration

- External parties can log in and view only their transactions and make updates
- Vendors can electronically countersign contracts, view the result of the samples sent, view the status of pending invoices (all unpaid invoices)
- Logistics service providers can update estimated arrival date of vessel



Power Your Business with iRely



Online Web-based platform

Scope: i21 Architecture and Technology

- Zero client footprint (no client installation needed)
- Accessible from anywhere – all that is needed is Chrome web browser
- Our technology platform is also used by over 50% of Fortune 100 companies and more than 2 million developers worldwide develop on this platform
- We have a unified platform and code base for developing browser and mobile apps
- We are device independent (Windows, Mac, Linux & Mobile Devices)
- Tremendous design focus on ease of use and an intuitive interface, thereby speeding user adoption and minimizing training requirements
- Forward thinking organization – here to stay
- Dynamic software with constant new features - 4 releases per year

About iRely

iRely is a leading global supplier of innovative software solutions that help its petroleum, agriculture and consumer products clients manage their core business processes. Based on a single, modern and easy-to-use platform, which can be easily configured to customer requirements, iRely has attracted and retained a large and referenceable customer base over its 30-year history and has developed a reputation for its laser focus on customer success.

