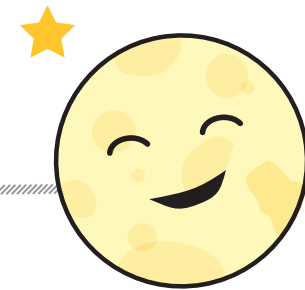


# PARENT NOTES: LUNAR CYCLES!

# MOON CALENDAR



Today we learned about the phases of the moon, and how they can be used to make a calendar which resets every 28 days. We demonstrated that the different shapes you'll see in the night sky at different times during the lunar cycle come from the position of the moon relative to the Sun and the earth.



## ASK YOUR CHILD

**What did you make today?**

(A moon phase model)

**Why do we see different moon shapes at different times of the lunar cycle?**

(The orbit of the moon changes its position relative to the earth, which means that different amounts of light can be reflected and visible from earth).

**How can we use the lunar cycle as a calendar to give us the power to look forward in time?**

(By writing down how many lunar cycles have passed, we can predict the timing of events in the future, much like any other calendar).