

Did you know?

Resin is naturally produced by plants, but scientists have recently found ways of producing it synthetically. Synthetic resins are more stable than natural ones and with the antimicrobial properties in the polymer, they inhibit the growth of nasty microorganisms.

RECESSED BRUSH BACK

Polypropylene is light, durable and economic. It's suitable for the body because it's easily moulded and easy to keep clean.

FILAMENT

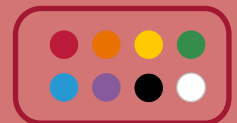
Polyester is very robust, it withstands very high temperatures up to 134°C and it's non-absorbant meaning that moisture can't get into the material, which would allow bacteria to grow.

INK

Food-approved ink allows us to print the Salmon® logo alongside the name and code for each product without the worry of the ink getting into the food.

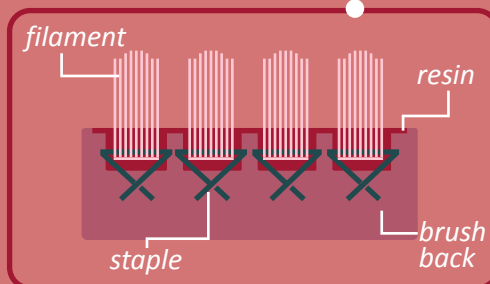
COLOURS

Available in up to 8 colours to support HACCP and 5S Compliance. (Anti-Microbial and Total MDX options resin-set as standard)



STAPLES

Food-grade stainless steel staples secure the filaments into the recessed brush back. The staples won't corrode or rust in a moist environment which makes them perfect for food use.



RESIN

After being secured into the brush back, the filaments are then flooded with an Anti-Microbial epoxy resin to complete the Dual Retention System (DRS®). The products undergo an extensive process to dissipate the resin into every crevice, eliminating areas for dirt and moisture to accumulate.