



GETTING YOU BACK TO BUSINESS



Banner Stands, Wall & Floor Graphics,
Substrates for Partitions, UltraBoard Barrier and more.

GRIMCO HAS YOU COVERED WITH THE MATERIALS
NEEDED TO GET BACK TO BUSINESS SAFELY!

UNITED INDUSTRIES

ULTRA BOARD™

BARRIER

PROTECTIVE BARRIER LINE

The UltraBoard Barrier line consists of optically clear, easily assembled, and customizable social distancing solutions. Select the best option based on the project environment.

- Lightweight and easily assembled in seconds
- Easily cleaned with non-solvent cleaners
- Great for retail, restaurant and healthcare service counters

[UltraBoard Barrier](#)

[UltraBoard Barrier Micro](#)

[UltraBoard Barrier Max](#)

[UltraBoard Barrier Trio](#)



FLOOR GRAPHICS

Briteline is an exceptional choice for temporary graphics on smooth interior floors. When paired with the matching Briteline Floor Film Overlamine, your graphics will be slip and scratch resistant.

- High-performance acrylic pressure sensitive adhesive
- Up to 6 months durability on common commercial tile floors
- Accepts a variety of solvent, eco-solvent, latex and UV inks

[Briteline Floor Film](#)

[Briteline Overlamine Matte](#)

[Briteline Overlamine Gloss](#)



VEHICLE WRAPS

Most high-quality cast wrap products are expensive, while cost-effective cast wraps are oftentimes unreliable. WrapCAST by Briteline is high-quality and value-conscious, allowing you to give your customers the best of both worlds.

- 2 mil cast wrap vinyl with air release
- Low initial tack allows for effortless re-positioning of the graphic
- 100% opacity, hiding the darkest paints

[WrapCAST](#)

[WrapCAST Overlamine](#)





THE GILMAN BROTHERS COMPANY



SUBSTRATES FOR PARTITIONS

Grimco offers a variety of substrates that can be used as social distancing dividers to separate shared space and help keep customers safe.

[MAXMETAL™](#)

[MAXMETAL™ 6mm](#)

[MAXMETAL™ One-Sided](#)

[Ion PVC](#)

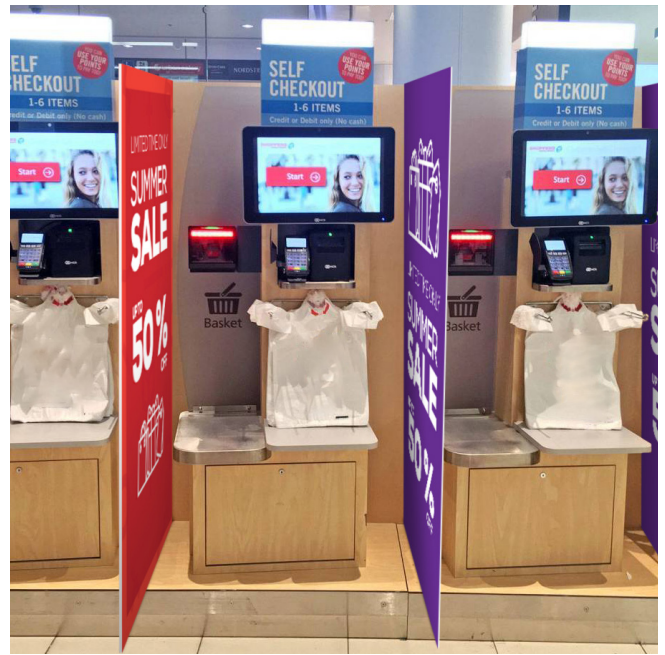
[INFINITY® Board](#)

[Spartech Polystyrene Sheets](#)

[InSite® Reveal®](#)

[UltraBoard Classic](#)

[Eaglecell](#)



IntePro®

Corrugate All Your Needs

COROPLAST

Offered in a variety of colors and sizes, IntePro's corrugated plastic blanks and panels offer the perfect solution for temporary directional and social distancing signage.

- Excellent for yard signs, directional signs and P.O.P signs
- 4 mm thickness will accommodate 9 gauge stakes
- Standard size is 24" x 18"

[Blanks](#)

[Panels](#)



WALL GRAPHICS

Rad Grafix is a removable wall graphic film that can be mounted to any surface and repositioned countless times without losing adhesion or leaving a residue. It's available in vinyl, textile and canvas options.

- 6 to 7 mil inch thickness
- Compatible with eco-solvent, latex, solvent, and UV ink systems
- Tough, durable, and abrasion resistant

[Rad Grafix Canvas](#)

[Rad Grafix Textile](#)

[Rad Grafix Vinyl](#)





BANNER STANDS

Artistic Displays offers a variety of frames and displays to showcase your banner graphics. From displays for double-sided graphics to mini stands for a clerical counter, Artistic Displays has a solution for you.

- Great for low budget, high traffic areas
- Easily portable
- Perfect blend of design, appeal, durability & value

[Bernini](#)

[Matisse Single-Sided](#)

[Matisse Double-Sided](#)

[Rembrandt Mini](#)

[Picasso Single-Sided](#)

[Picasso Double-Sided](#)



HanleyLED™

ILLUMINATED SIGNS



Grimco offers illuminated sign materials that help you revamp as you move towards reopening. With highly efficient power supplies, incredibly bright LEDs and vibrant Briteline Cast Translucent Vinyl you have all the tools at hand to update channel letters and cabinet signs for your customers.

- HanleyLED's LED offering includes a wide variety of compact LED modules, bars and flex strips
- HanleyLED's power supplies range in output power from 60W to 240W
- Briteline's Cast Translucent Films are designed for back or internally illuminated signage

[LEDs](#)

[Power Supplies](#)

[Briteline Cast Translucent](#)



COVID-19 SIGNS

HEALTH & SAFETY SIGNS

Grimco offers health and safety signs for consumers to share important informational messages regarding general health policies and protocols. These signs come ready to be installed on a post, fence or wall with proper hardware.

- .080" 5052-H38 alodized aluminum sign
- Pre-punched 3/8" mounting holes for easy installation
- Offered in English, Bilingual and Spanish

[COVID-19 SIGNS](#)

