



# **YOUR PASSPORT**

TO A SMART WORKPLACE

BY PTS CONSULTING

## The Smart Workplace Journey

---

The government's Estate Strategy aims to create great places for people to work, with buildings that are cost-efficient, productive and environmentally friendly.

A Smart Workplace will help your organisation achieve all of these objectives.

This step-by-step guide, developed by PTS Consulting, is your passport to Smart Workplace success.

We've helped organisations large and small review their operations to get more out of less, for over three decades.

Let us be your guide, and watch your business thrive.

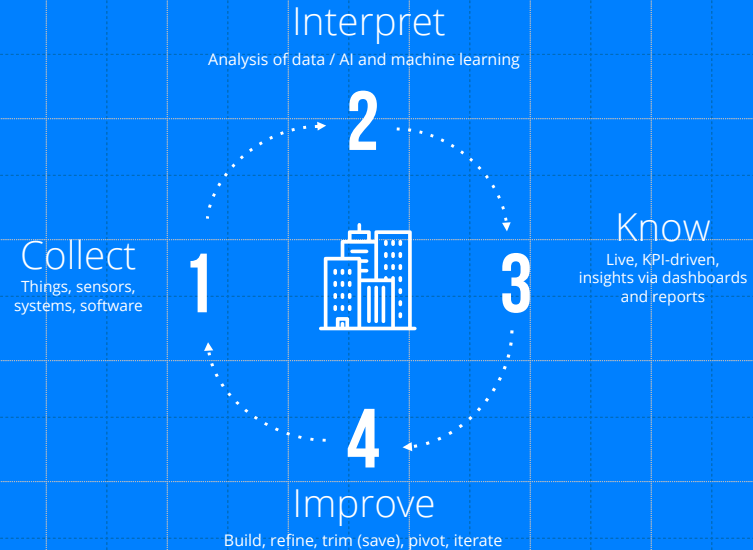


**What will your destination be?**

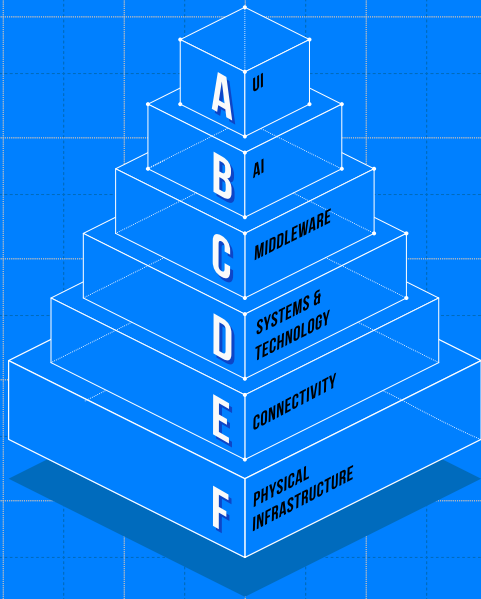
An optimised environment that saves you money, time and energy.

A Smart Workplace leverages the latest transformative developments in IoT (Internet of Things) and AI (Artificial Intelligence) so that you can make the best possible use of your estate both now and in the future. It also ensures your employees or visitors enjoy a positive experience from the moment they step through your doors.

It does this by constantly monitoring the environment and adjusting the systems under its control. This allows you to respond to the needs of your people day and night, and to adapt to short and long-term changes to optimise efficiency.



the building blocks of a Smart Workplace



**A**

User Interface - Apps, dashboards

**B**

Artificial intelligence - Machine Learning, RPA, Chatbots

**C**

Middleware - Data Management Platform

**D**

Systems & Technology - IoT, Beacons, Sensors, Personal Devices, VR/AR, Virtual Assistants, Access Control, Signage, BMS, Asset Management, Identity and Access Management (IAM)

**E**

Connectivity - Network infrastructure, Wi-Fi, 5G, bluetooth

**F**

Physical Infrastructure - Power, space, cabling



**Why travel this route?**

## Go Green

---

Take care of the planet and save money. The systems we recommend ensure water, heat, electricity, etc., are only used when necessary. Boost your green credentials, organisational reputation, and reduce your bills at the same time.

## Make the most of your space

---

Space is valuable and comes at a high cost; make sure you're making the best of yours. Smart Workplace sensors monitor different areas and identify occupancy trends that can be employed to optimise the use of your estate.



## Self-Service

---

Reduce admin costs with user-friendly room booking systems. Check availability, choose the layout and equipment, send invites and automated reminders – all in just a few clicks. Less time on logistics means more time to focus on the work that matters.

## Personalise your space

---

Every business is different and every team within it has its own requirements. A Smart Workplace allows users to adjust the environment to their preferences or needs. Some tasks might require confidentiality; others may need close collaboration. So, if it's desk space configuration or canteen favourites the Smart Workplace will adapt.





## Keep ahead of Problems

---

Identify and resolve problems before they disrupt your business and spend more time on the jobs that matter. Smart Systems automatically schedule preventative maintenance. Should a fault occur, they will automatically alert and report the issue. These systems reduce the need for physical checks and lower your repair costs.

## Protect your space, people and customers

---

Keeping your people safe and secure is paramount. Smart security systems give you more granular insight into how your space is used to better inform protective measures, such as keeping lone workers safe, and spotting patterns and anomalies within the building.



## Reap the financial rewards

---

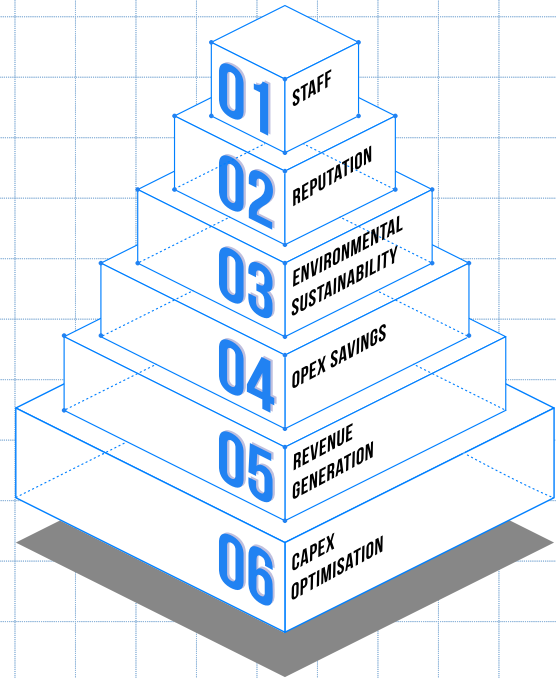
Investing in a Smart Workplace doesn't need to be expensive. What's more, the financial benefits can be substantial, and the return on investment swift. Our research suggests that a well-executed strategy can deliver a return on your investment within three years. After six years, you can even yield double the investment.

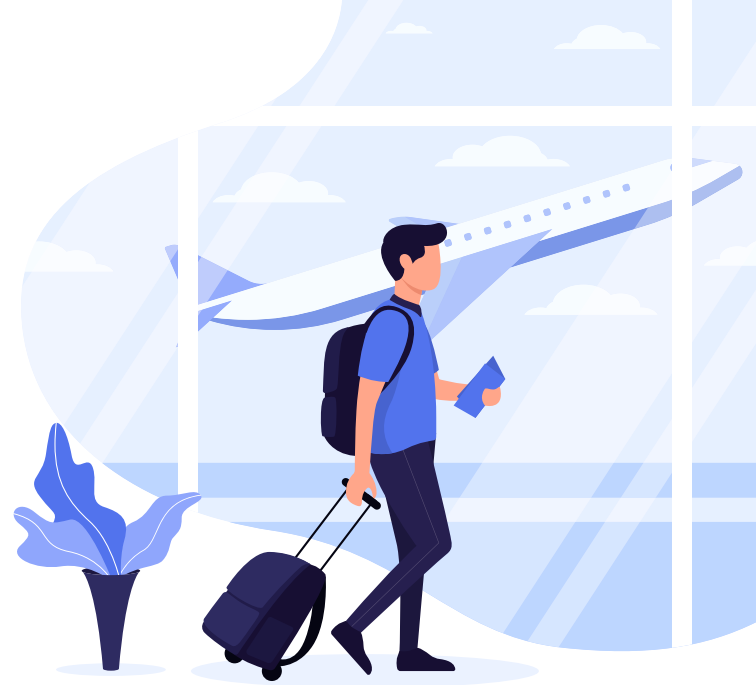


## Wider Benefits

---

Whilst the financial benefits are compelling, the wider benefits should not be overlooked. A Smart Workplace provides a platform to increase productivity and user satisfaction, mitigate risks and attract and retain top talent.





**So how do you get there?**

PTS will take you on a five-step journey to delivering a Smart Workplace strategy for your business

### **1. Articulate the vision statement**

We work with your stakeholders to develop smart principles that support the organisation's strategy

### **2. Imagine user scenarios**

We explore different scenarios of smart in action, tailored to your organisation. It helps encourage imaginative thinking and makes sure that it's being done for the right reasons

### **3. Conduct a Smart Maturity Assessment**

We analyse your current level of smart readiness compared to the stated vision. This means looking at your operating model, technology infrastructure, culture and budgeting

### **4. Create a plan of action**

We help to map out who needs to do what and when, so that you have a clear view of how to put your plan into action, especially if you have upcoming construction programmes

### **5. Build a long-term roadmap**

We enable you to forecast what is on the horizon so that the search for innovation becomes a continuous process

With a strategy in place, we then offer the following services to help you on your journey:

#### **Occupancy pilot studies**

We use occupancy and footfall sensors to gauge current use of your Estate and help inform future capital programmes

#### **Building design**

We manage the strategic brief, design, procurement and implementation of a Smart Workplace

#### **Digital, Data & Technology (DDAT) strategy**

We develop and align your DDAT strategy with the Smart Workplace strategy



**Book your ticket with us**



