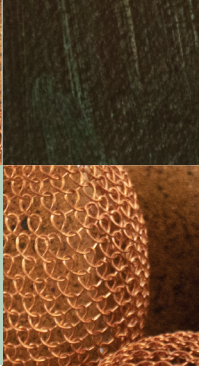
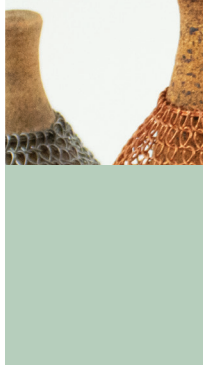


## ENTRY FEE

Entry fees are non-refundable and only works with paid entry fees are eligible for prizes and for selection for exhibition inclusion.



2020 | GOSFORD ART PRIZE



**Gosford Art Prize** entry fee is \$30 per entry (max. two entries per artist)

**Gosford Ceramics Prize** entry fee is \$20 per entry (max. two entries per artist)

## TERMS AND CONDITIONS OF ENTRY

## PRIZES

First Prize	\$15,000
Second Prize	\$5,000
Aboriginal Artist Prize	\$2,500
Ceramics Prize	\$2,000
Highly Commended (two prizes)	\$1,000

These awards will be decided by Judges selected by Gosford Regional Gallery and their decision will be final.

Viewer's Choice Award	\$500
-----------------------	-------

This will be selected by votes from visitors to the exhibition.

## ELIGIBILITY

The Prize is open to all artists, with the exception of employees of Central Coast Council. All artwork must have been produced within the last 12 months.

## SELECTION PROCEDURE

We've changed the selection process this year due to Government COVID Safe guidelines.

A panel of judges including staff from the Gosford Regional Gallery will select finalists from the entries submitted online.

Finalists will be contacted and invited to deliver their entries to the Gallery for the exhibition.

## KEY DATES

Entries close	30 August
Finalists announced	4 September
Delivery of finalists	7 - 11 September
Prizes announced	25 September
Exhibition dates	26 September - 29 November 2020

## ARTWORK

- Work must not exceed two (2) metres in any one direction and should be easily lifted by two people.
- Work must be presented ready for exhibition.
- The artist's name, address, telephone number, title of work and retail price (or not for sale "NFS") must be noted on the back (or bottom) of each work.
- All works must be dry.
- All artwork must have been produced within the last 12 months.

## ENTRY PROCEDURE *We're COVID Safe!*

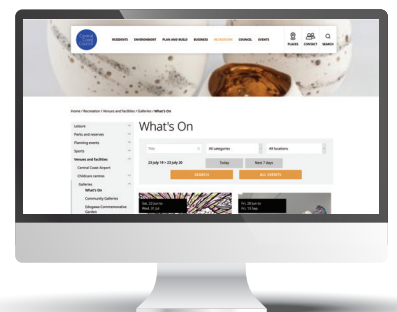
All entries must be submitted online via the website:

[info.centralcoast.nsw.gov.au/gosfordartprize](http://info.centralcoast.nsw.gov.au/gosfordartprize)

NEW  
ONLINE  
ONLY

For an entry to be valid it must:

- Be correctly filled out and submitted by 11.59PM on 30 August 2020
- Include at least one uploaded image of the entered artwork. We accept file formats as .jpg, .jpeg, .png, .tif, .tiff, .ico, .Bmp, .webp up to 5MB with image resolution of 300dpi minimum
- Have appropriate entry fee paid via trybooking



# 2020 | G O S F O R D A R T P R I Z E

## EXHIBITION

The exhibition of finalists will be held at the Gosford Regional Gallery from

**26 September - 29 November 2020**

All works selected for exhibition must remain on show for the full duration of the exhibition.

The names of the finalists included in the exhibition will be posted on the Gosford Regional Gallery website on 7 September 2020.

## RULES

In the event of a dispute arising regarding the rules and conditions of entry, a decision made by Gallery Management shall be final.

## SALE OF WORK

- All works exhibited can be for sale.
- The price must be clearly marked on the entry form and The Gallery will take a 35 percent commission (inc. GST).
- Artists need to provide the retail (selling) price, including GST (if registered for GST).
- The Gallery is not able to offer advice on this.
- Sales will be paid approximately three weeks after the conclusion of the exhibition.

## COPYRIGHT

By entering the Gosford Art Prize the entrant agrees to grant Gosford Regional Gallery a non-exclusive licence to photograph the artwork and publish images of the artwork, or a detail of the artwork, for the purpose of documentation and the promotion of the Gosford Art Prize and/or Gosford Regional Gallery.

## PRIVACY

- Information provided on this form will be used to create a catalogue of the entries, and the finalists.
- The artist's name and details about the work will be published online and in the Catalogue.
- No other personal details will be made available publicly.
- Other personal details requested are used solely for the purpose of running this competition, unless the entrant elects to receive further promotional material.

## INSURANCE

Work on exhibition will be insured against fire, theft and vandalism. Gosford Regional Gallery will not be held liable for minor accidental damage that may occur to artwork during the storage or judging of the Art Prize or deterioration due to inherent vice.

## COLLECTION OF WORK

- All exhibited works can be collected between 10am and 3pm on Monday 30 November 2020.
- Any artwork not collected within two months of the close of the exhibition will be disposed of unless arrangements have been made with Gallery staff.
- Disposal may include destruction or gift to a charity.



Gosford  
Regional  
Gallery