

OTTAWA

3 Days | Winterlude Student Tour


BrightsparkSM





TOUR SNAPSHOT

Experience the nation's capital at the most magical time of the year, Winterlude! This 3-day student trip to Ottawa with your class is the perfect combination of outdoor activities and educational content. Enjoy ice skating on the Rideau Canal, cave explorations, guided tours of the Canadian War Museum and the Supreme Court of Canada. This packed tour will expose your students to the beauty of winter in the city and inspire them to become future travellers.

WHAT'S INCLUDED:


 **Sites & Activities:**
Winterlude's Snowflake Kingdom, Ice Skating on the Rideau Canal, Confederation Park, Discovery Caves and Snowshoeing, Canadian War Museum, Supreme Court of Canada, Sussex Drive Coach Tour, Byward Market, Rideau Centre, Ottawa Senators Hockey Game

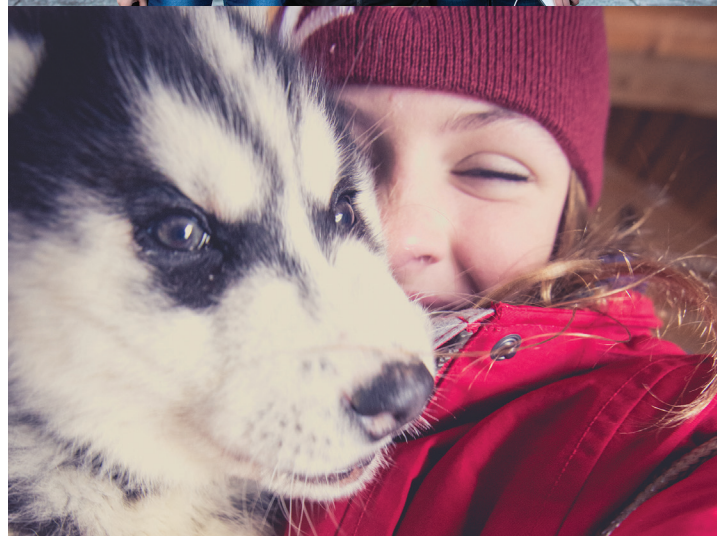
 **Brightspark Exclusives:**
The Adventure, The Heist at the Canadian Nature Museum, Legislate This!, Discover Bytown

 **Your Brightspark Tour Leader**

 **Accommodations**
2 nights hotel

 **Transportation**
Private motor coach

 **Meals**
2 breakfasts, 2 dinners





WHY BRIGHTSPARK?

PUTTING YOUR EXPERIENCE FIRST

- **Our Tour Leaders Make All The Difference:** They are experts in fun and are equipped with educational content and interactive games that keep your students engaged. Extensively trained and masters in logistics, they deal with all the details to ensure a stress-free class trip!
- **Always Something Fresh:** Brightspark Exclusive activities encourage participation through experiential education. Whether it's a Mystery Heist in Ottawa or Escaping the Port in Montréal, these activities add a WOW factor to your tour.
- **The Best Support:** Our team is with you every step of the way from itinerary planning to board paperwork, online payment collection and 24/7 on-tour assistance. We are dedicated to making the planning process simple and easy.
- **Go. Discover. Inspire:** You are not a tourist but a traveller; we will expose you and your students to the soul of the destination and ignite your sense of wonder.

EXPERTS IN STUDENT TRAVEL

We have 40+ years of travel experience, exceptional supplier relationships, and an impeccable safety record, you can rest assured your tour will be sparktacular!

95%
OF TEACHERS
LOVE OUR
TOURS

40+
YEARS OF
TRAVEL
EXPERIENCE

33K+
PASSENGERS
TRAVELLED
LAST YEAR



WE'VE GOT YOU COVERED

THE BEST INSURANCE

Feel safe with the knowledge that your students are fully protected with cancellation insurance provided by Travel Guard, which includes school board cancellation for **ANY REASON.**



"Ottawa is so beautiful, and it's no different in the winter. With a blanket of white snow covering the city it's like a winter wonderland. The Winterlude festival is so much fun; I loved skating on the Rideau Canal and grabbing a Beaver Tail to warm up!"

Vanessa, Marketing

OTTAWA - 3 Days | Winterlude Student Tour

DAY 1

- 7:00 a.m. **Board your washroom equipped, climate controlled highway motor coach** and depart for Ottawa via Highway #407. En route, your Tour Leader will get to know the students on a first name basis.
- 8:00 a.m. **Participate in The Adventure!** What time is it? Adventure Time! This Brightspark Exclusive spans the entire trip to keep your students engaged. The game bonds groups together as they try to win the most points, with correct answers to trivia, positivity and punctuality, by the end of the tour. Optional social media component with trip hashtags and a photo contest available.
- 10:00 a.m. **Legislate This!** Join your Tour Leader on Parliament Hill to learn how a bill becomes a law. Students will debate a sample piece of legislature during the mock parliament and will discover the processes that MPs experience as they vote in new legislation. This Brightspark Exclusive is a fun game that ties perfectly into the curriculum.
- 1:30 p.m. **Discover Bytown.** Explore Ottawa's past and present with your Tour Leader as you walk through the important historical landmarks of our capital. Students will discover the dubious history of Bytown as they are guided through the streets of the Byward Market, walk along the Rideau Canal, a UNESCO World Heritage Site, see the National War Memorial, and visit the steps of Parliament Hill.
- 3:30 p.m. **The Heist at the Canadian Museum of Nature.** In the nation's capital, a heavily guarded gem stone has been stolen! Students will learn about potential suspects from their Tour Leader, then will work together in groups to look for clues throughout the museum. Will your group solve the mystery?
- 5:00 p.m. **Hotel check-in**
- 6:15 p.m. **Dinner**
- 7:30 p.m. **Ice Skating and Beaver Tails on the Rideau Canal.** Only in winter does Ottawa gain a new form of transportation, ice skating! Head down to the Rideau Canal to skate on the longest rink in the world right in the heart of the city. While gliding down the canal, make sure you stop for a Beaver Tail, a delicious fried-dough pastry dressed with your choice of chocolate, maple butter or cinnamon sugar.
- 9:15 p.m. **Visit Confederation Park's Ice Sculptures.** Stroll through Crystal Garden to see the glimmering ice sculptures created by professionals from around the world! These gorgeous works of art are best seen at night when colourful lights expose all the beautiful details.
- 10:00 p.m. **Night security** each evening between 10:00 p.m. and 6:00 a.m.

DAY 2

- 8:00 a.m. **Breakfast**
- 10:00 a.m. **Discovery Caves & Snowshoeing at Arbraska Laffleche.** Grab your headlamp and trek into a 20,000 year-old cave to see sleeping bats, ice stalactites and stalagmites and other fun surprises! After your cave adventure, it's time to strap on your snowshoes and venture into the magical Laurentian forest for a hike with your students.
- 12:00 p.m. **Rideau Centre.** Enjoy lunch on your own with more than a dozen places to eat. After lunch, the students may be permitted some time to explore the mall.
- 1:30 p.m. **Sussex Drive Coach Tour.** Drive along the iconic Sussex Drive as your Tour Leader comments on points of interest. These include the residences of the Prime Minister, the Governor General and a number of foreign embassies.
- 2:30 p.m. **Winterlude's Snowflake Kingdom.** Snow slides, an ice maze and snow sculptures, oh my! Snowflake Kingdom is the largest snow playground on the continent with exciting activities that will entertain your students for hours.
- 5:00 p.m. **Dinner**
- 7:00 p.m. **Ottawa Senators Hockey Game.** Are you part of the Red Army? Head over to the Canadian Tire Centre for a live hockey game. Bring your jerseys, enjoy some snacks and get caught up in the excitement!

DAY 3

- 7:45 a.m. **Breakfast**
- 8:45 a.m. **Check out of your hotel**
- 10:00 a.m. **Guided Grand Tour of the Canadian War Museum.** This tour provides an introduction to the museum's award-winning architecture, its collection of war art and its large military vehicles. Sitting on the banks of the Ottawa River, the museum houses the largest military history collection in Canada and spans the period from The Seven Years' War to the present.
- 12:00 p.m. **Guided Tour of the Supreme Court of Canada.** This tour will familiarize you with all Canadian judicial system and how decisions made by the Supreme Court Justices affect our Canadians. Subject to availability, your students will participate in a Mock Trial, where they will play judge and jury to learn the process firsthand.
- 12:45 p.m. **The Byward Market.** Time to explore one of Canada's oldest and largest public markets.
- 1:00 p.m. **Lunch**
- 8:00 p.m. **Welcome Home!**

START PLANNING NOW!



brightsparktravel.ca



1.800.267.6425



emailus@brightsparktravel.ca

LIKE US ON FACEBOOK
AND INSTAGRAM

[@brightsparkcanada](https://www.instagram.com/brightsparkcanada)

[#GoDiscoverInspire](https://www.instagram.com/GoDiscoverInspire)

