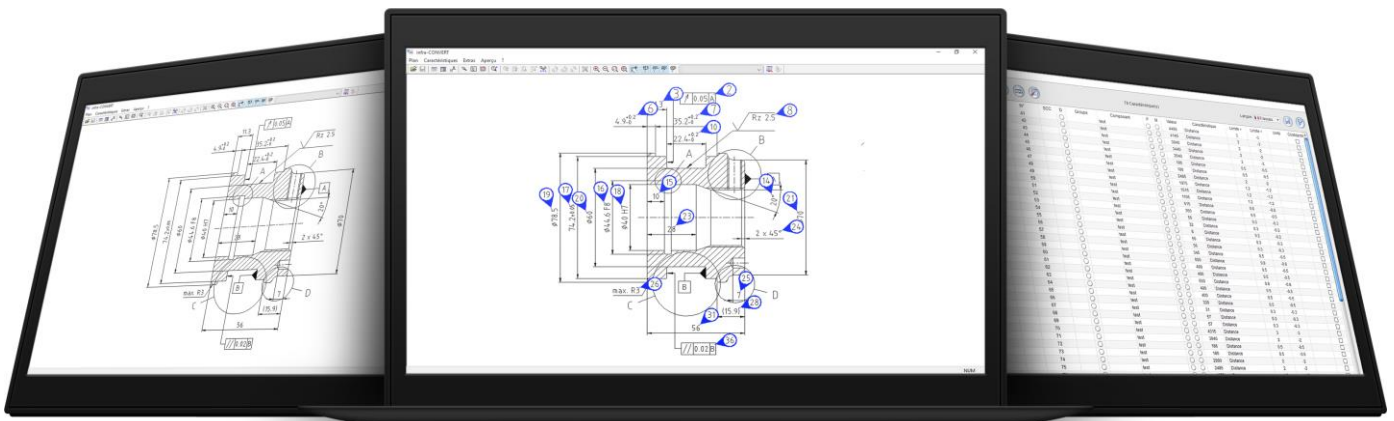


Skill Infra Convert

From CAD drawing to the FMEA



- Automatic detection of dimensions of CAD drawings
- Stamping dimensions
- Dxf, Dwg, Igs, Iges formats
- Extraction of the list
- Integration into the FMEA
- Save time, no input error

AUTOMATIC DETECTION OF DIMENSIONS!

www.skillsoftware.com



SKILL SOFTWARE

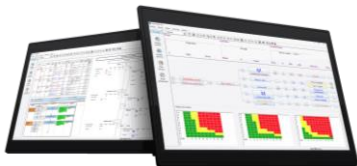
JUST ONE CLICK

SKILL SOFTWARE. In the field of quality management, Skill Software supplies softwares to industries worldwide since 1995.

PROALPHA GROUP. As FMEA specialist, Skill Software has joined the proALPHA group in 2021. The proALPHA group is the third largest provider of ERP for medium-sized manufacturing and trading companies in Germany.

> 7.700 customers worldwide > 181 partners > 1.550 employees > 50 offices

OUR SOFTWARES are validated by more than 1.500 customer installations worldwide. Their sustainability for 25 years is a guarantee of safety and constant innovations. Capitalize you knowledge in “just one click” to save time and money.



“**Skill FMEA Pro**” incorporates all the experience acquired for 25 years. It is the key reference for risks analysis and the world leader in FMEA software for automotive, aerospace, pharmaceutical, watch-making and jewelry industries. Every day, new sectors of activity are increasingly using “Skill FMEA Pro” for their risks analysis.



“**Skill Infra Convert**” appeals all companies working on CAD drawings. The automatically extraction of information is a major asset to save thousands of man-hours and to avoid data entry errors.



“**Skill Production Reader**” : From the control plan to the job instruction... From the control plan, the operator directly accesses the characteristics to be checked at the workplace, with the exact values / tolerances.

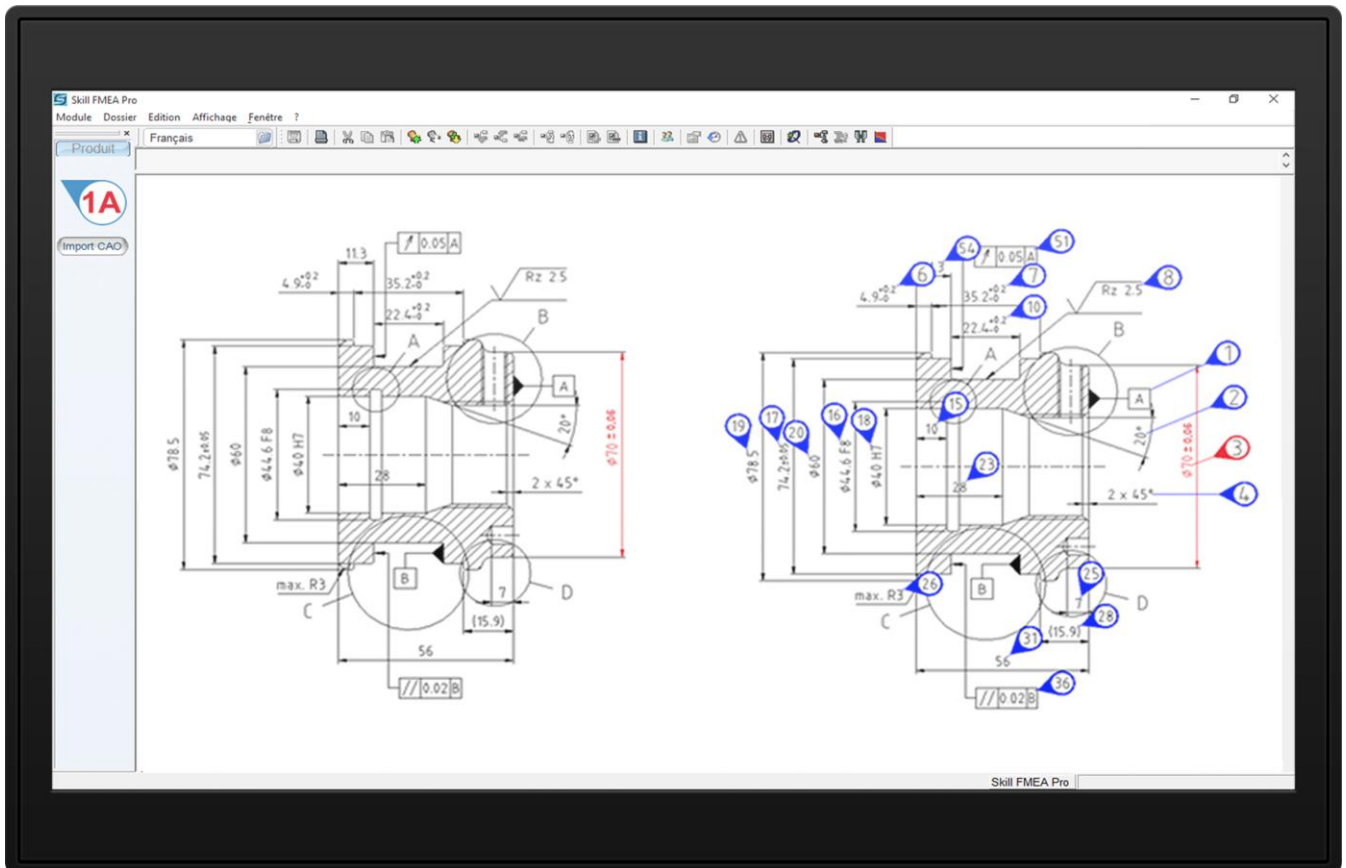


“**Skill Action Pro**” is dedicated to action plans. Our clients use this software to remove all Excel files and thus to have a global overview of their action plans through a user-friendly and secure web software.

CUSTOMERS: Our clients include many of the highest-performing industrial companies in the world, with the common goal of improving efficiency, quality and simplicity. A short list of our customers is available on our web site. The entire list can be required per mail.

Skill Infra Convert – from CAD drawing to the FMEA

SKILL INFRA CONVERT: All the relevant information is automatically extracted from a CAD drawing (Dxf, Dwg), stamped and numbered.



SAVE TIME AND AVOID ERRORS: The detection of dimensions is done with a simple click and thus allows our customers to save hours of work. Moreover, the reliability of Skill Infra Convert allows you to completely eliminate all possible errors you may have with a manual inspection. With one click, I extract 100% of dimensions without any error!

Integration into the FMEA

INTEGRATION INTO THE FMEA: After stamping and numbering all the dimensions in one click, they are integrated into the Skill FMEA Pro software.

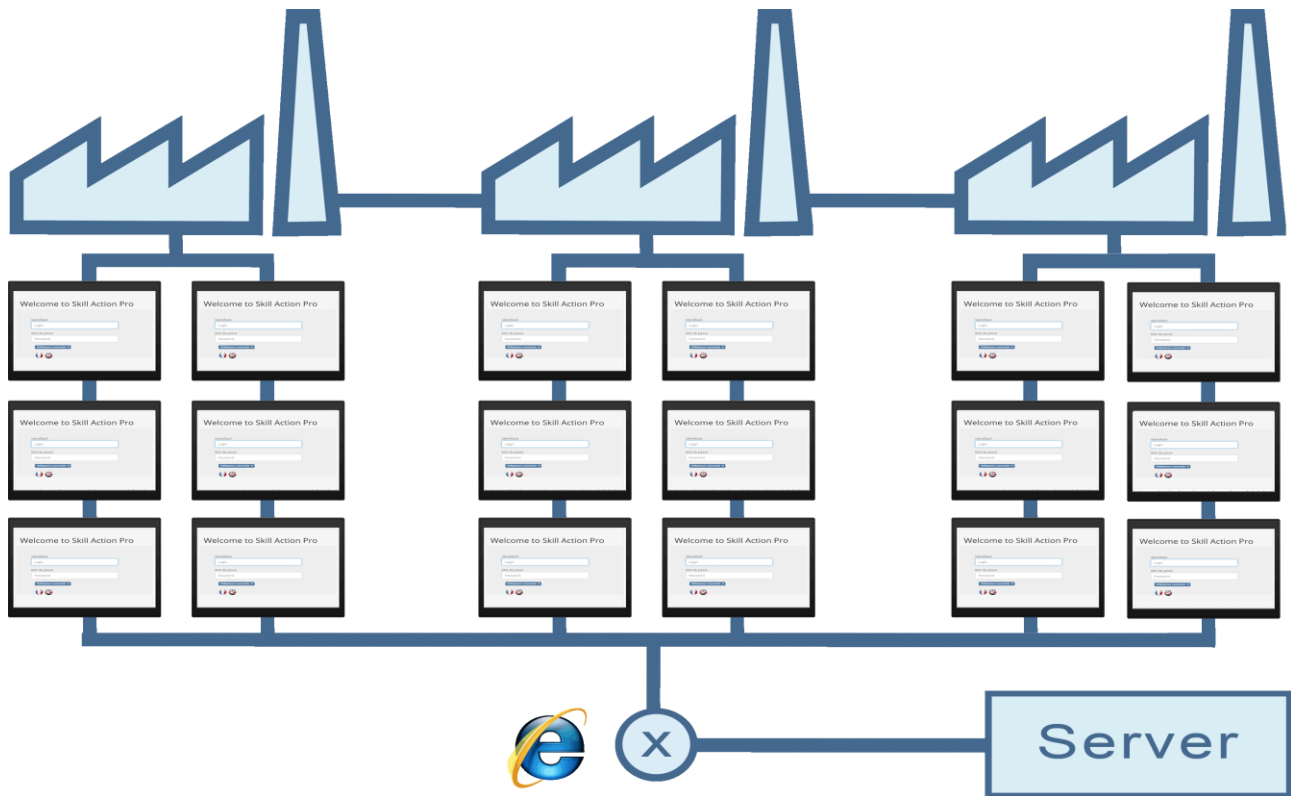
The screenshot displays the Skill FMEA Pro interface. On the left, there is a sidebar with a 'Produit' section and a '1A' label. The main workspace shows three CAD drawings of a mechanical part. The first drawing is a cross-section with various dimensions and features labeled with letters A, B, C, D. The second drawing is a similar view with dimensions numbered 1 through 25. The third drawing is a detail view of a specific feature, also with dimensions numbered 1 through 25. Below the drawings is a table with the following columns: Code, SCC, Composant, Com., N°, SCC, D, P, M, Caractéristique, Valeur, Limite <, Limite >, and Unité.

Code	SCC	Composant	Com.	N°	SCC	D	P	M	Caractéristique	Valeur	Limite <	Limite >	Unité
-	01	Capot	1						Dimension	1			
-	01	Capot	2						Angle	20.000			
-	01	Capot	3						Diamètre	70.000	-0.05	+0.05	mm
-	01	Capot	4						Chanfrein	2.000			
-	02	Résine	21						Viscosité	x			
-	02	Résine	22						Référence	XB22			
-	03	Mousse	31						Épaisseur	80			mm
-	03	Mousse	32						Densité	80			Kg/M3
-	04	Caoutchouc	41						Elastomère	X			
-	04	Caoutchouc	42						Dureté	6 mm			
-	04	Caoutchouc	43						Épaisseur	1			
-	05	Contact central	51						Matière	Cu69			
-	05	Contact central	52						Diamètre ext	1	-0.1	+0.1	mm
-	05	Contact central	53						État de surface	RA 0.1			
-	06	Corps de pompe	61						Matière	PVC 34			
-	06	Corps de pompe	62						État de surface	RA 0.2			
-	06	Corps de pompe	63						Diamètre	8	-0.2	+0.2	mm

e

ONE DIMENSION, ONE PICTURE: The all list has been integrated into the Skill FMEA Pro software with one picture for each dimension. Integration of the component into the FMEA = one click!

CONFIGURATIONS: Skill Infra Convert is available in a mono or multi-site network. Licenses are simultaneous. You can therefore install Skill Infra Convert on N computers and only with X simultaneous connections. Ask for your offer.



ASK FOR YOUR FREE DEMO !

www.skillssoftware.com