



# Undergraduate Guide

2023



# Contents

Why choose us? ▼

Make Newcastle yours ▼

Your learning ▼

Your dream degree ▼

UK supported entry ▼

INTO Newcastle University ▼

Be career ready ▼

Our city ▼

Campus life ▼

Supporting you ▼

Your new home ▼

Our facilities ▼

Sport for all ▼

Degree programmes ▼

How you apply ▼

Explore Newcastle ▼

Closer than you think ▼

Disclaimers and acknowledgements ▼



It's time to unlock your potential.  
To start your journey.

**Sign up [HERE](#)**

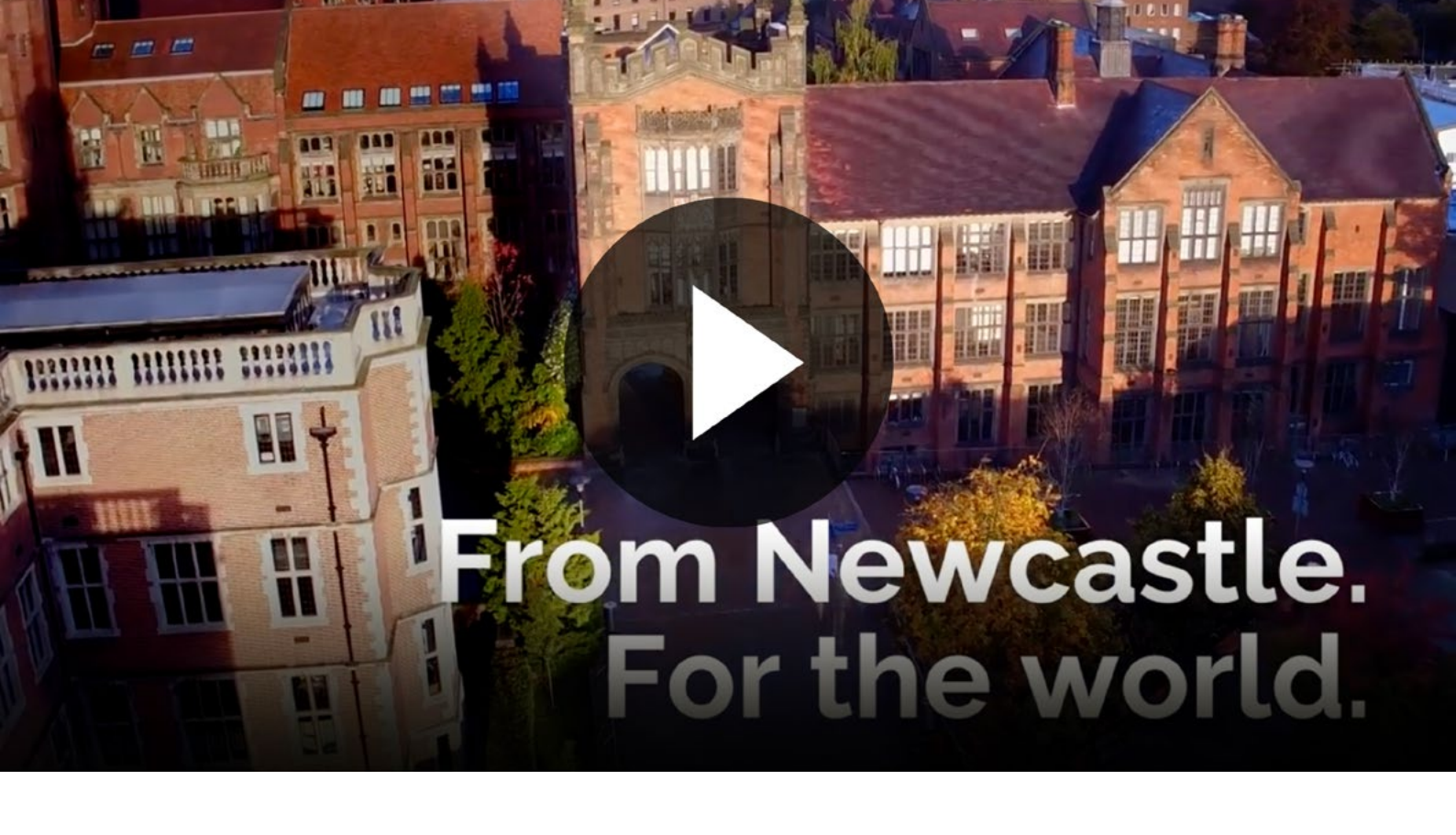
and be the first to get our updates,  
find out about our Open Days – in person  
or online – book for one of our events  
in the UK or worldwide.

**You're the future.  
Make Newcastle yours.**





# Why choose us?



From Newcastle.  
For the world.

We believe in excellence...

**GLOBAL  
TOP 150  
UNIVERSITY**

(Ranked 134th, QS World University Rankings 2022)

(Ranked 146th, Times Higher World University Rankings 2022)



**Awarded  
5+ QS Stars  
for Excellence  
2022**

**RUSSELL  
GROUP**

founding  
member



**Global presence with campuses in the UK,  
Singapore and Malaysia**

and that everyone matters.



**Athena  
Swan  
Silver Award**

a commitment to  
gender equality

**3rd**

**in the UK  
for Diversity  
and Inclusion**

(Whatuni Student Choice Awards 2021)

**29,000**

students



from 140 countries

**7,000**

students have  
joined us via  
our **PARTNERS**  
supported  
entry route

It's time to change our world...



**Our University  
is recognised  
as a global  
leader of  
sustainable  
development**

(Times Higher Education Impact Rankings 2022)



**LEADING EDUCATION  
AND RESEARCH**

in ageing and health, data,  
cities and place, culture and  
creative arts, and one planet



**3**

**National  
Innovation  
Centres**

putting the UK at the forefront of  
the industries of the future

and we want to take you with us.



**200+**  
degrees



**180+**  
societies



**60+**  
sports clubs

**Top  
10**



city for affordability  
in the UK

(QS Best Student Cities 2022)

**1 in 6  
people**



in our city  
is a student

Find your future at Newcastle

**TOP  
20**

most targeted  
University by the  
Times Top 100  
Employers

**GLOBALLY CONNECTED**

**25,000**

worldwide community of alumni

**5th in the UK**

for Graduate  
Entrepreneurship

(based on start-up turnover and external investment  
in HE-BCI Survey 2019-2020)

**Strong  
employer  
links**



with international  
businesses, including  
Siemens, PwC, FDM,  
Accenture and Arup





# Make Newcastle yours

## Make Newcastle University the moment you choose a world-class education and a degree valued by employers around the world.

We're a global top 150 world university. Our high graduate employability, together with a low cost of living, mean a degree with us is an investment in your future.

- Study at a prestigious, research-intensive **Russell Group University** – Newcastle is a founding member, with a reputation for world-leading research and academic excellence.
- Graduate with a UK degree that is highly valued by employers around the globe.
- Experience the traditions and soak up the history of a University that can trace its origins back to the School of Medicine and Surgery, established in 1834. This year, our Faculty of Science, Agriculture and Engineering is celebrating 150 years of innovation.
- Choose from over 200 courses, and graduate in three, four, or five years.
- Learn in state-of-the-art facilities. We're investing millions in an outstanding campus environment so you learn at the forefront of new discoveries.
- Get a part-time job and work while you learn with job opportunities on campus, in our city and further afield. The post-study Graduate route visa for international/EU students also means you can work in the UK for two years after graduation.
- Be the best you can be, supported by our generous scholarships and dedicated Student Services – we want you to succeed with us.
- Join a University that's working to protect our planet. We achieved a First Class award in the People and Planet University League for our approach to environmental sustainability. We are committed to reach Net Zero by 2030.
- Feel like you belong at our safe, beautiful and multicultural campus in the heart of a city known for the warmth of its welcome.

It all starts [HERE](#)







# Your learning

**Your learning will be shaped by your dreams and ambitions, but we'll work together to build the skills you need for your future.**

Our world-leading experts and top academics will share your passion for your subject and our pioneering research as a world top 150 Russell Group university will feed into your degree. This means you study at the cutting-edge of your discipline.

Our teaching is ranked five-star (QS Stars 2022) and you'll be guided by gifted educators to become an independent critical thinker.

You'll learn through:

- lectures and seminars
- practical sessions
- group learning
- self-study
- research
- fieldwork and study visits

You'll also get plenty of opportunity to put your learning into practice – through presentations and exhibitions, performance opportunities, projects, placements and more.

**There's learning support, too.** Our Writing Development Centre offers academic writing tuition and a wide range of study skills support, including exam revision, time management, critical reading and note-taking.

Our Maths Aid Centre provides free maths and stats help – from mastering mathematical methods to practising graduate numerical skills tests. And we've developed an online Academic Skills Kit packed with advice, from assignment and assessment tips to research skills and referencing.

If English isn't your first language, there's extra support to improve your academic reading, writing and speaking skills with **free in-sessional English programmes**.



## Supporting your studies

You'll build strong relationships with your lecturers and personal tutor who'll support your study. Your tutor will usually be a member of academic staff from your degree programme, who can advise on academic matters, as well as direct you to any wellbeing support you may need.

During your first year, a peer mentor will help you settle into life as a university student. Mentors are trained student volunteers who are usually in stage two or three of the same degree course, and can share their experiences.

## Your learning experience

We want you to get the most out of your teaching and learning and will do everything we can to support you.

We've drawn on our experiences during the Covid-19 pandemic, so you'll benefit from the best blended teaching practices, delivered in person and online. And we've built flexibility into our degree programmes and innovation into our assessment processes, so that in a world that keeps changing, your university experience is still fulfilling.

## Build a better world with us

You'll become part of our academic community as **we work to solve some of the world's biggest challenges** – from preventing the next global pandemic by tackling the spread of untreatable 'superbugs', to fighting climate change by harnessing technology to achieve Net Zero.





# Your dream degree

**At Newcastle you get to choose the degree that sparks your imagination, ideas and passion.**

We offer over 200 programmes so you can study for a single subject, broaden your focus with a Joint Honours degree, or blend two or three subjects from a selection of courses to create your own Combined Honours programme.

Your degree will be three, four or five years in length depending on the subject and if it features a placement year or study abroad element.

But whatever programme you choose, it will be an investment in your future.

## Become a graduate in demand

We'll prepare you for your career, including opportunities to:

- immerse yourself in degrees shaped by our links with national and multinational industries, including technology innovator Dyson, PwC, GlaxoSmithKline, IBM and our global principal partner, Siemens
- achieve professional accreditation
- work with industry-standard equipment to develop professional skills
- learn through clinical placements and case-led study
- showcase your skills at industry sponsored events, such as the Formula Student competition to design, build and race a formula-style car
- take part in professional development programmes – for example, our LifeWorkArt programme is a unique collaboration with local and national arts organisations
- gain industry perspectives through conferences and guest lectures by leading professionals

## Study abroad



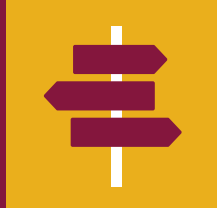
Your degree could take you to another country – either as a compulsory part of your studies or as something you choose to do.

Through our Study Abroad programme you can spend up to 12 months learning at one of our 200+ partner universities, experiencing a different culture and gaining a new perspective of the world and yourself.

You'll extend your degree at Newcastle by a year, and when you return, you'll be more motivated, independent and confident, with skills and experience that will help you stand out in the graduate job market.

Find out more [HERE](#)





# UK supported entry

## Whatever your background, make your university ambitions come true with our supported entry routes.

Meet the eligibility criteria for our programmes to get extra help, information and advice to support your journey to Newcastle. You could also get a lower conditional offer from us.

There are different supported entry routes depending on your circumstances and when you apply.

### Year 13

**PARTNERS:** open to all eligible students in the UK, our supported entry route is award-winning. It's 3rd in the UK for Diversity and Inclusion (Whatuni Student Choice Awards 2021) and an 'Innovation' finalist in the Social Mobility Awards 2021.

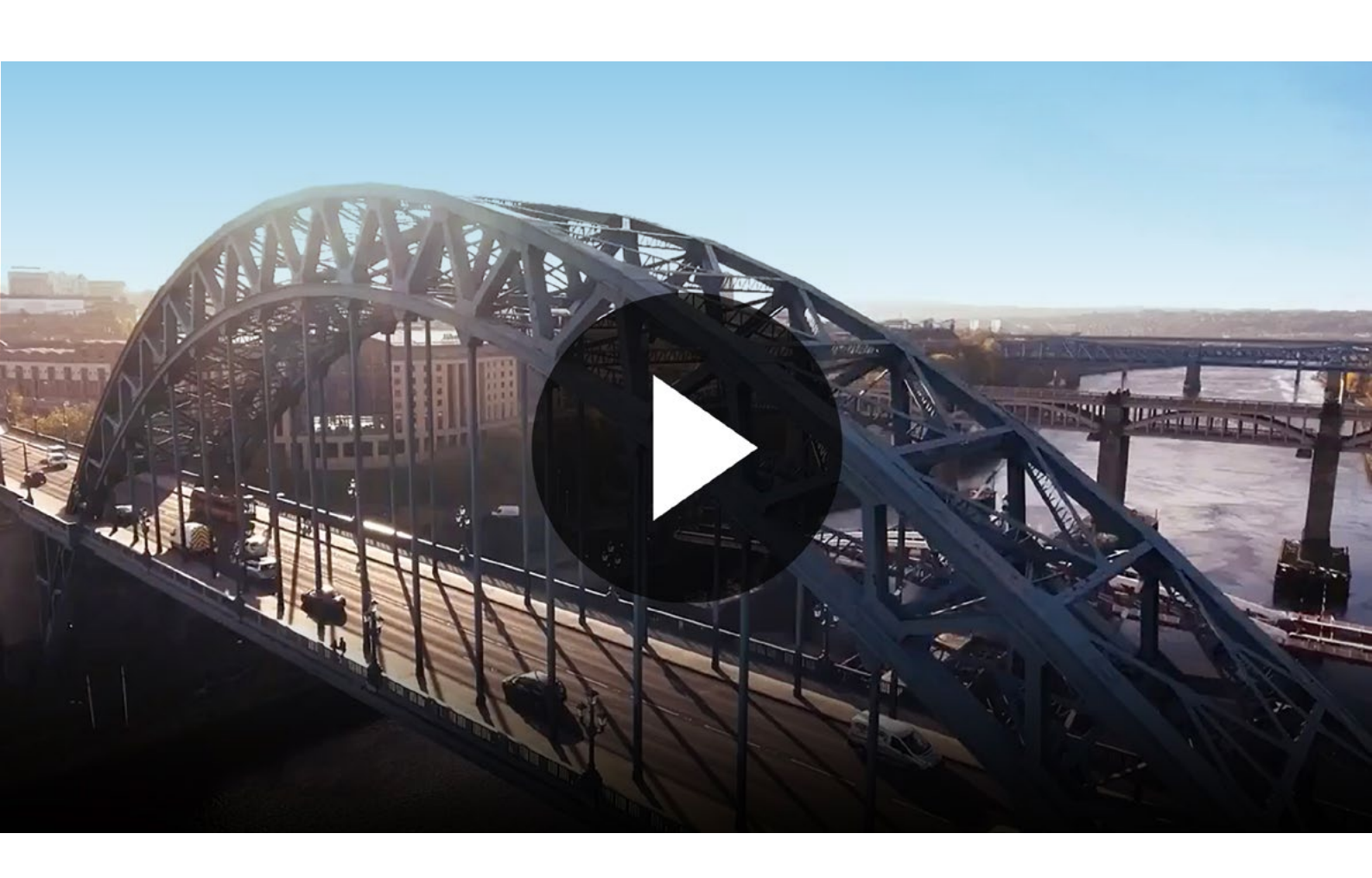
Over 7,000 students have gone on to study with us through PARTNERS. You'll benefit from:

- PARTNERS Academic Summer School – held after your A Levels, or equivalent exams. Meet undergraduate lecturers, use our facilities, develop your study skills and get to know other students. You'll also learn about different career paths and how to make the most of your time with us
- On Course to PASS – online support to help you choose your degree programme, apply to us, prepare for Summer School and more
- Results Day support
- opportunities when you join us – be the first to know about work opportunities, such as Student Ambassador and Student Rep positions; help us develop the PARTNERS programme and access work experience through our **ncl+ Career Insights Award**

Financial support could also be available when you start your degree with us.

**Alternative offer** – typically **up to three** grades lower when you successfully complete the programme. Check the **degree programme table** to find the PARTNERS entry requirements for the course(s) you're interested in.

Find out more about PARTNERS **HERE** and **WATCH** our video.



### Year 12

**Realising Opportunities:** a two-year supported entry route to help you develop and improve the skills you need for university.

You'll complete an academic element and the online module Skills4uni, attend a launch event and a national student conference. You'll also get a fantastic support package, plus access to our outstanding facilities during your programme.

**Alternative offer** – typically **two** grades lower when you successfully complete the programme.

Find out more about Realising Opportunities **HERE**.

**Sutton Trust:** two-year supported entry schemes for North East students – Pathways to Law and Pathways to Medicine.

You'll benefit from University workshops and events, access work experience placements, network with lawyers, doctors and other professionals, attend a summer school and get admissions support.

**Alternative offer** – typically **up to two** grades lower when you successfully complete the programme.

Find out more about the Sutton Trust **HERE**.



**You get to make friends with people both in, and outside of, your course area and it helps you orientate your way around the University.**

**Rebecca**

**PARTNERS/History and Archaeology**

**(BA Hons)**





# INTO Newcastle University

**Our pathway courses for international/EU students could be your route to an undergraduate degree at Newcastle University.**

## Pick your pathway

Working with international study specialists INTO, our courses have been designed so you gain the knowledge and confidence you need for your university journey.

Learn at our safe, purpose-built study centre in the heart of campus, choosing the pathway option for your subject:

- **International Foundation** – a route on to the first year of a range of degrees. Complete a foundation programme and, if you meet your degree entry requirements, you're guaranteed a place with us.
- **International Year One** – equal to the first year of an undergraduate degree. Complete your programme and you'll go directly into the second year of a relevant degree with us.

## English language courses

Improve your language skills with an INTO English Language Course. Develop your essay writing, research and presentation skills, and reach the academic level you need for your degree.

Or combine your English language studies with academic modules at Newcastle University and gain academic credits for your undergraduate degree in your home country.

**Find out more about our pathway and English language courses [HERE](#).**

## INTO facilities and support

Learn in contemporary classrooms, science laboratories and studio space, with access to a dedicated learning resource centre, extensive library, on-site accommodation, café and communal areas – plus all the fantastic facilities on campus.

And be supported during your studies by a personal tutor and language advisers, including a dedicated Chinese Language Support Officer.

An orientation programme and social activities will also help you make friends and settle in to life at Newcastle.

**INTO provided a lot of support prior to my University studies. I wouldn't have been able to progress on to my degree without my foundation year at INTO.**

**Natali  
International Foundation/  
Mechanical Engineering (BEng Hons)**





# Be career ready

**As a Top 20 'most targeted' University in the UK by the Times Top 100 Employers\* we know how to prepare you for life after you graduate.**

## Build skills

Our award-winning Careers Service will support you while you're studying with us and for up to three years after you graduate.

Learn to:

- plan your career through workshops and insight events
- market your skills and experience in CVs, applications and LinkedIn profiles
- find placements, internships or work experience
- prepare for interviews and assessment centres
- find jobs – including part-time work while you're studying
- start your own business or independent career

You'll become confident, future-focused, globally and culturally aware as you identify and develop the key skills for your future career with our Graduate Skills Framework.

Through our ncl+ award, show how achievements outside of your degree – from part-time work to volunteering, club and society roles – have given you the skills employers are looking for.

## Build networks

You'll network with employers at our high-profile recruitment fairs and employer and sector insight events organised by our Careers Service.

## Build your experience with a placement

Spend 9–12 months on a work placement as part of your degree. Develop skills sought after by employers and be supported during your placement by our dedicated team.

Our students have taken up placements with organisations such as Mercedes HPP, Disney, Microsoft, Northumbrian Water, aerospace pioneer Airbus and global biopharmaceutical company MSD.

**WATCH** our video about some of their experiences.



## Placements Uncovered



You can also gain experience through volunteering, internships, work shadowing and work experience. You could even work in another country.

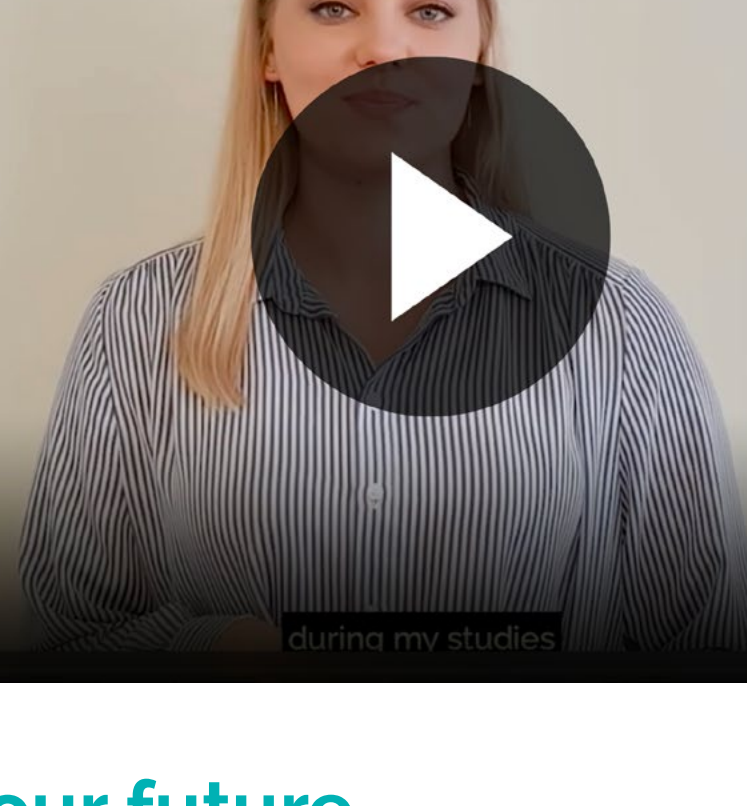
**Find out more about our Careers Service support HERE.**

## Build a business

Start or grow a business or independent career with support from our Careers Service START UP team including:

- bespoke one-to-one coaching and mentoring
- workshops and peer-learning groups
- equity-free funding
- START UP Founderships – an initiative to ready early-stage businesses for market entry
- Start-up visa endorsement for international students
- co-working space, and more

**Find out more about START UP HERE and WATCH our video.**



during my studies

## Build your future

Explore your options with our expert careers consultants and information advisers. Find graduate and part-time job vacancies, prepare for interviews, and get advice on handling job offers.

If you're an international/EU student, workshops and information about immigration routes into graduate employment will help you build your career in the UK. We'll also support you to find a job in your home country. For example, our China Career Gateway programme prepares our Chinese students for the UK and Chinese job markets.

There's targeted support for our UK students, too. Our Career Insights Programme helps students from under-represented groups in higher education connect with employers. Through our partnership with disability inclusion specialists EmployAbility, we support students with a disability, mental health condition, or other condition such as autism and dyslexia, with job application advice, recruitment and workplace adjustments.

With our help, our graduates go on to accomplish great things, working for national and international employers such as Siemens, Dyson, IBM, NHS, PwC, Deloitte, EY and Accenture.



**Awarded  
5 QS Stars  
for Student  
Employability 2022**

**5<sup>th</sup>**

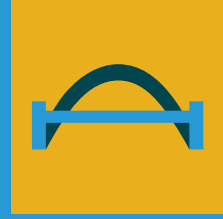
**in the UK  
for Graduate  
Entrepreneurship\*\***

\* The Graduate Market, report from High Fliers Research Limited.

\*\* Based on start-up turnover and external investment in HE-BCI

Survey 2019-2020





# Our city

**Feel connected in Newcastle: to your bright future and our rich past; to your home, wherever that might be in the world, and our welcoming North East community.**

Less than three hours by train from London, with an international airport and transport links that make home feel close, Newcastle has a reputation for being one of the UK's best student cities\*.

One in six people here is a student, so you'll feel like you belong in this diverse and vibrant place. We're also one of the most affordable cities in the UK\*, so you'll get to spend your student budget on the things you love doing.



## **Adventures on your doorstep...**

From our safe city-centre campus, soak up the atmosphere of the city on your doorstep including China Town, a stunning Quayside of iconic bridges, bars and restaurants, and historic Grainger Town with its 19th century architecture, market and theatre.

Our food scene, from supermarkets to street food and fine dining, is influenced by cultures from around the world. And our high street shops, cafés, bars and clubs add a cosmopolitan touch.

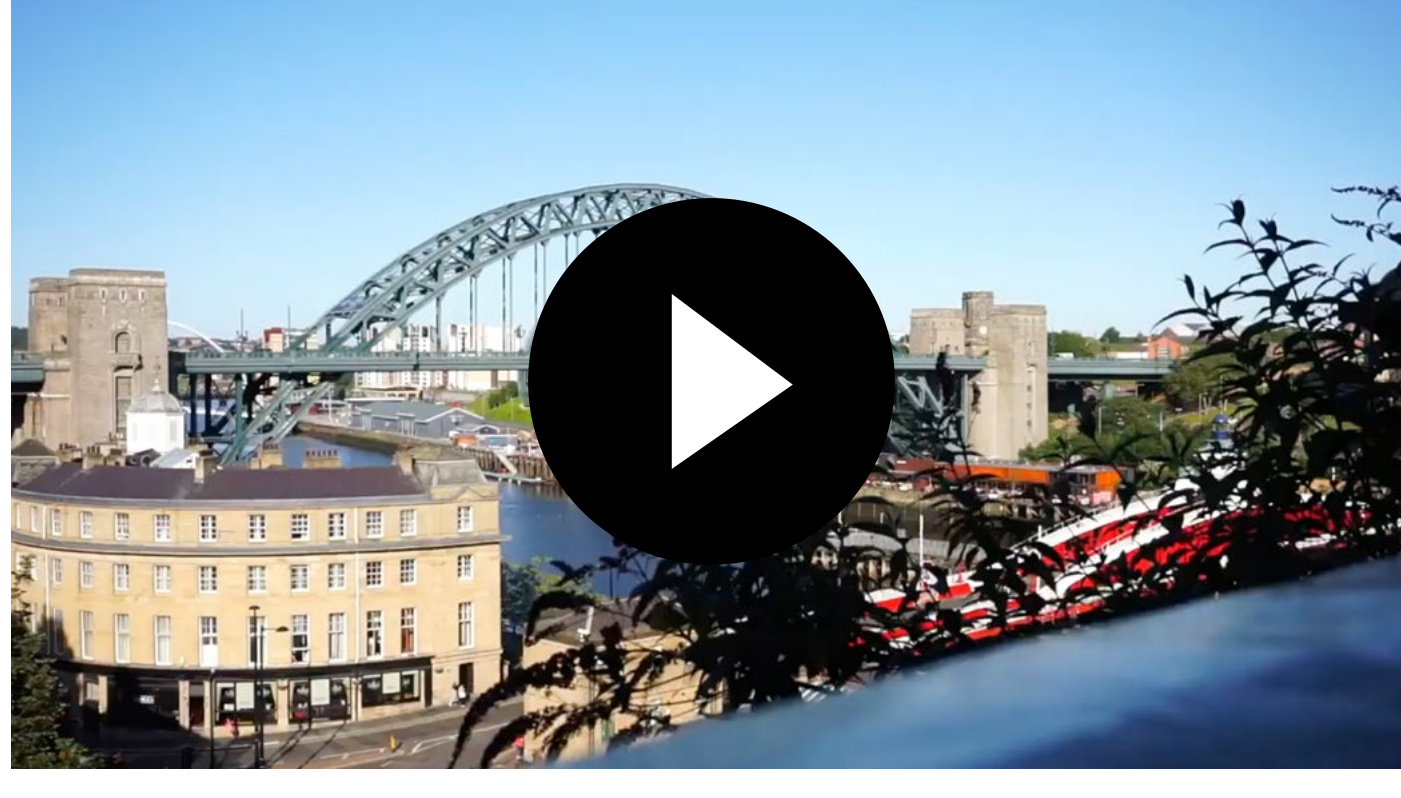
Our multicultural arts scene thrives in world-class venues, and we're home to top-class sport – Premier League football club Newcastle United, Rugby Union's Newcastle Falcons, and Newcastle Eagles, the most successful team in the British Basketball League's history.

## **...or further afield**

Fast road and rail links – and student discounted travel – make it easy to explore the UK and its major cities. Or discover the North East's award-winning beaches and stunning countryside, including UNESCO World Heritage Site Hadrian's Wall.

Find out more [HERE](#).

## **Take a tour of our city**



**6<sup>th</sup>**  
**best student**  
**city in the UK\***

**Top 10**  
**city for affordability**  
**in the UK\***

\*QS Best Student Cities 2022





# Campus life

## What will make you feel like you belong at Newcastle University?

### Our multicultural campus

Students from 140 countries call our beautiful campus home – that adds up to countless ways you'll be made to feel welcome.

### Our vibrant community

You'll be part of a 29,000-strong student community that's at the heart of everything we do.

And you'll be connected to **250,000 alumni worldwide** – graduates who have gone on to do inspirational things, such as businessman and Sage Group co-founder Graham Wylie, journalist Kate Adie and comedian Rowan Atkinson.

### Our warm welcome

Freshers' Week, packed with fun events, will get your University experience off to a great start. During your Induction Programme, you'll also meet your classmates and the staff who'll support you during your time with us.

If you're joining us from overseas, our International Welcome Programme will help you settle in to life in the UK. You'll learn more about us and our special city and meet other students at social events and through a wide range of activities.

**Find out more [HERE](#) and [TAKE](#) a campus tour.**



### Our Students' Union

Our Students' Union will be at the heart of your Newcastle experience. It's where you'll meet students from different cultures, faiths and interests, make new friends and create amazing memories:

- choose from 180+ richly diverse societies, 60+ sports clubs and a programme of 'Give It A Go' taster sessions
- catch the latest live gigs and club nights at Venue in the Students' Union building, or acoustic sessions, quizzes and live sport in our student bar
- make a difference with our Go Volunteer programme

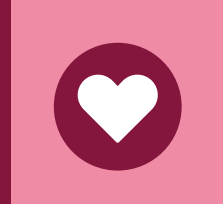
The Students' Union will also represent and support you. Sabbatical officers will make sure your voice is heard on University-wide issues – with opportunities for you to stand for Student Council or as a School/course rep. The Student Advice Centre and Welfare and Support services based in the Students' Union will offer impartial, professional advice when you need it.

There's extra support available through the confidential listening service Nightline, and NUSU Buddies, which promotes an inclusive campus and helps new students build the support networks they need in our community.

**Find out more about our Students' Union, including how it can support you [HERE](#).**







# Supporting you

## Belonging to Newcastle University means you'll be supported throughout your journey.

### When you apply

In person or online, there are lots of ways you can access the advice and information you need about applying to us:

- [talk to our expert staff](#) at an Open Day, on campus or virtual event, or meet us in your country
- [join us](#) at a UCAS fair or higher education exhibition
- [contact](#) our International Recruitment Team and regional advisers
- [go online](#) for top tips about the application process, writing your personal statement, student finance and more
- use our live chat or talk to current students and staff, including admissions tutors, on [Unibuddy](#)

We also work with education agents worldwide who can support you during your application, and our dedicated Visa Support team can help with your visa or immigration status.

Find out about our support for international/EU students [HERE](#).

### When you join us

Be supported from your first day on campus, whether you have a query about your accommodation, how to register with us, or access the resources you need.

Our Student Services have been brought together in one dedicated building, so you can get the help you need, easily and quickly.

Find out more [HERE](#).



### When you need us most

Reach your full potential, even when life gets a bit challenging. Our Student Health and Wellbeing services offer:

- counselling
- mental health support
- disability support
- financial support
- faith and spirituality support, including opportunities for prayer, worship and meditation

We've extended our Health and Wellbeing services and online offer so that support is there when you need it. Online platform TalkCampus, which offers peer support, and our iNCLude app, developed to help you create positive habits and great coping skills, also provide support 24/7.

Find out more [HERE](#).

### Get in touch early

If you have a disability, long-term health or mental health condition, get in touch with us early about your support needs, particularly if you're applying to a professionally accredited or health programme, such as engineering or medicine.

Telling us early helps us to identify the support you need and helps you to make an informed decision about your application.

Contact us [HERE](#).



**Athena  
Swan**  
Silver Award

a commitment  
to gender  
equality









# Our facilities

## Study in tomorrow's learning environment today.

Access our specialist subject facilities including:

- two commercial farms and a biological field station
- a sea-going research vessel, coastal station and marine lab
- music studios and rehearsal spaces
- studios for architecture and art
- high-specification labs and clinical skills suites
- media studios, recording and editing equipment
- smart grid lab and energy storage test bed
- translation and interpreting suites

Due to open this year is the new Sir Terry Farrell Building, a unique centre for architecture and urban design. It will feature space for events, study and research, and a business start-up area for recent graduates.

We're also investing in our Stephenson Building, creating an engineering hub for world-leading research and learning. With innovative teaching and social spaces, workshops, laboratories, offices, computer clusters and maker spaces, we're building a facility for the 21st century and beyond.

### Newcastle Helix

Enhance your learning through the £350 million innovation hub, Newcastle Helix. We're working with partners to develop this living laboratory and global centre for science, technology, research and education in the heart of our city.

At the gateway to Helix is our triple accredited Business School, and at its heart our Frederick Douglass Centre providing state-of-the art learning and teaching spaces. Our Urban Sciences Building is home to our School of Computing, and The Catalyst is the home of our National Innovation Centres.



### Virtual learning

Benefit from our virtual learning environment which provides 24/7 access to your course content, assessment information and online collaboration with other students and lecturers – all backed by our outstanding IT Service.

### Award-winning libraries

Multi-award-winning, our Library Service is based across four libraries on campus. Support your studies with extensive print and e-resources, e-versions of key reading list materials, innovative learning spaces, PC clusters and our laptop loan scheme. Or access our subject guides to books, journals, databases and more, developed specifically for your programme. **Find out more [HERE](#).**

### Learning resources

Our Language Resource Centre offers distance and online learning resources, hosting self-study materials in over 100 languages, and our on-campus museum, theatre and gallery bring history and art to life.

Find out more about the state-of-the-art facilities you'll be using [HERE](#) and [TAKE](#) a tour of our library facilities.







# Sport for all

**Sport and exercise are for everyone at Newcastle, and we've invested £32 million in our facilities to make your experience even better.**

Access high-tech studio spaces, a world-class gym, sports halls, glass-backed squash courts and two high-performance strength and conditioning rooms at our on-campus Sport and Fitness Centre.

Or play your sport outdoors with facilities including four 3G pitches, a dedicated hockey pitch, an ergo room and 10 grass pitches at easy-to-access locations around Newcastle.

## Top 10 in the UK (BUCS)

Join 'Team Newcastle' and one of our 60+ student-led sports clubs, with teams competing at regional and national levels – we're top 10 in the British Universities and Colleges Sport league (BUCS).

Sign up with your hall mates, course mates or friends, and take part in our intramural sport programme for all abilities. Or book an exercise class, choosing from a mix of cardio, strength, HIIT, cycling and yoga every week.

Explore our inclusive sport provision and find out more about the sport and exercise you love [HERE](#) and [WATCH](#) our video.



## Performance sport

Already competing at regional, national or international level in the UK or your home country? Then we can support you to achieve your best in both your sport and your studies.

We offer one of the best Performance Sport Programmes in the UK, so you could benefit from our:

- Performance Scholarships of up to £10,000 funding a year
- Disability Sports Scholarships
- specialised support packages
- performance sport clubs

Our performance clubs are led by professional coaches and you'll work with specialist strength and conditioning coaches, physios and sports science support to become the elite athlete you were born to be.

We work with Sport England to support UK athletes through the Talented Athlete Scholarship Scheme (TASS) and have recently become a Dual Career Accredited University.

If you're a high performance UK athlete, you could also be eligible for a contextual offer from us that's either one or two grades lower than the typical offer for your degree programme.

## Sport science

Our state-of-the-art sports facilities, including cutting-edge sports laboratories, gait track, environmental chamber and performance suite are also used by students on our Sport and Exercise Science degree to study the science of sporting success.



## Team GB

Some of our student athletes have gone on to represent Great Britain, including Tokyo 2020 Olympians, **Tom Ford** and **James Rudkin** (bronze medallists, rowing), **Emily Ford** (rowing) and **Harry Glover** (rugby sevens).



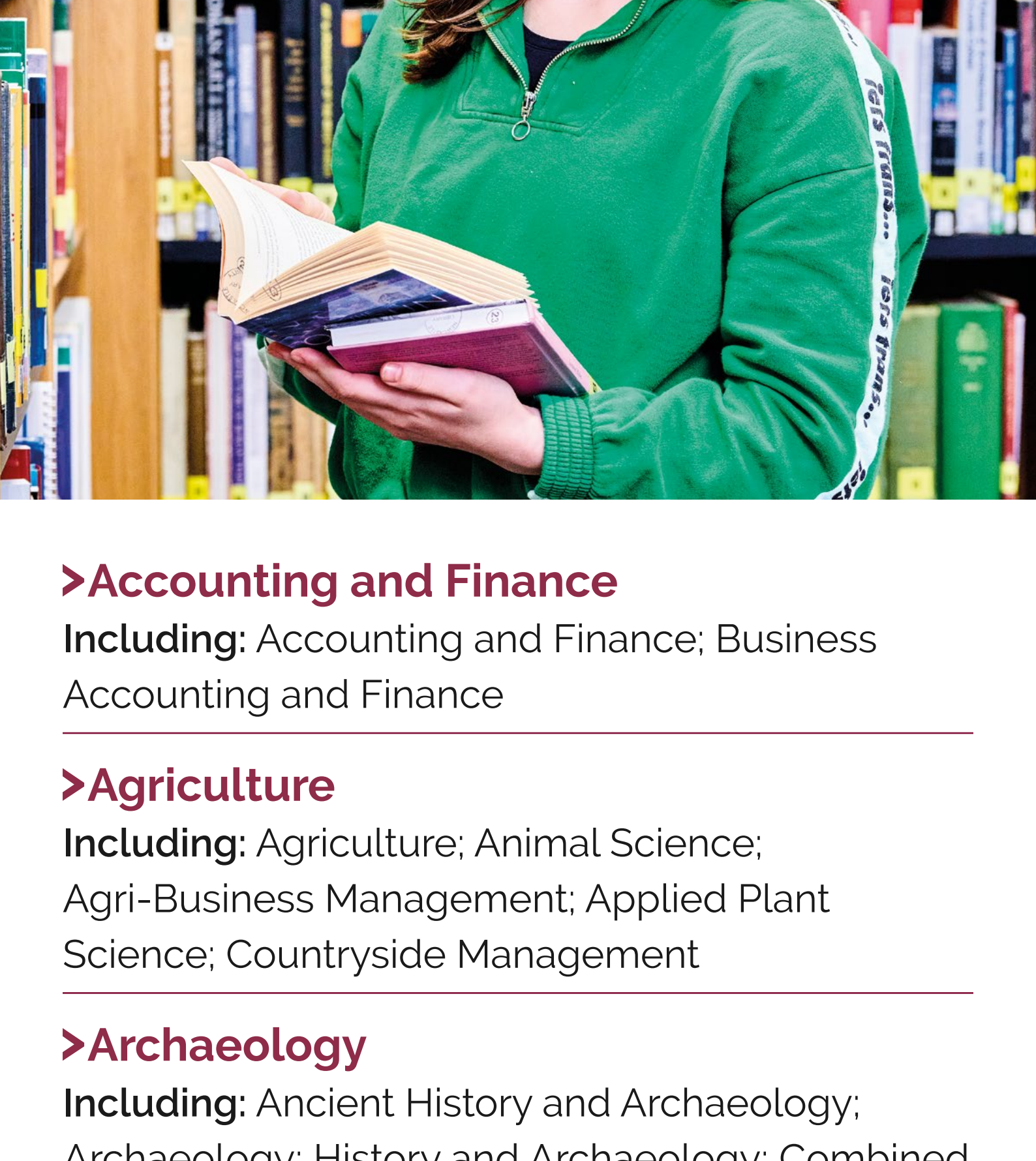


# Degree programmes

## Follow the links below to find your dream degree.

Discover everything you need to know about our courses, including:

- **Full entry requirements.** We accept a broad range of UK, International Baccalaureate, Republic of Ireland and international/EU qualifications. Use the drop-down menu to search for the qualifications we accept from your country. If your qualifications are not listed, please contact the International Office **[HERE](#)**.
- **English language requirements.** If English is not your first language, you'll need to provide a recognised English language test or qualification. We typically require a score of IELTS 6.5 or equivalent for direct entry to the University.
- **Course rankings**
- **Module information**
- **Teaching and assessment methods**
- **Fees and funding**
- **Career prospects**
- **Work experience and study abroad opportunities**



### >Accounting and Finance

**Including:** Accounting and Finance; Business Accounting and Finance

### >Agriculture

**Including:** Agriculture; Animal Science; Agri-Business Management; Applied Plant Science; Countryside Management

### >Archaeology

**Including:** Ancient History and Archaeology; Archaeology; History and Archaeology; Combined Honours

### >Architecture

**Including:** Architecture; Architecture and Urban Planning

### >Biology and Biomedical Sciences

**Including:** Biomedical and Biomolecular Sciences; Biology and Zoology; Marine Biology and Marine Zoology

### >Business Management

**Including:** Business Management; International Business Management

### >Business-related degrees

**Including:** Business Management; Accounting and Finance; Marketing; Economics; Agri-Business Management; Food Business Management and Marketing; Combined Honours

### >Chemistry

**Including:** Chemistry; Chemistry with Medicinal Chemistry

### >Classics and Ancient History

**Including:** Ancient History; Ancient History and Archaeology; Classical Studies; Classical Studies and English; Classics; History; Combined Honours

### >Combined Honours (study two or three subjects together)

**Including:** Archaeology; Business; Classics; Education; English Linguistic Studies; English Literature; Film Studies; Geography; History; History of Art; Law; Media and Communication; Modern Languages; Music; Philosophy; Politics; Sociology

### >Computing

**Including:** Computer Science; Game Engineering; Security and Resilience; Software Engineering

### >Dentistry

**Including:** Dental Surgery; Oral and Dental Health Sciences

### >Economics

**Including:** Economics; Economics and Business Management; Economics and Finance

### >Education

**Including:** Education; Combined Honours

### >Engineering

**Including:** Engineering with Foundation Year; Engineering; Chemical Engineering; Civil Engineering; Electrical and Electronic Engineering; Geospatial Surveying, Mapping and GIS; Marine Engineering and Naval Architecture; Mechanical Engineering

### >English Language and Linguistics

**Including:** English Language; English Language and Literature; Linguistics; Linguistics with Chinese or Japanese; Linguistics with French; Linguistics with German; Linguistics with Spanish; Modern Languages and Linguistics; Combined Honours

### >English Literature (including Creative Writing)

**Including:** English Literature; English Literature with Creative Writing; English Literature and History; English Language and Literature; Classical Studies and English; Combined Honours

### >Earth Science and Environmental Science

**Including:** Earth Science; Environmental Science

### >Fine Art

**Including:** Fine Art, Combined Honours (History of Art)

### >Geography

**Including:** Geography; Geography and Planning; Geospatial Surveying, Mapping and GIS; Physical Geography; Combined Honours

### >History

**Including:** History; English Literature and History; History and Archaeology; Politics and History; Combined Honours

### >Law

**Including:** Law; Combined Honours

### >Marine Biology and Marine Zoology

**Including:** Marine Biology; Marine Zoology

### >Marketing

**Including:** Marketing; Marketing and Management

### >Mathematics and Statistics

**Including:** Mathematics; Mathematics and Accounting; Mathematics and Economics; Mathematics and Statistics; Mathematics with Business; Mathematics with Finance; Psychology and Mathematics; Statistics

### >Media, Journalism and Film

**Including:** Media and Cultural Studies; Journalism; Film; Digital Cultures; Combined Honours

### >Medicine

**Including:** Medicine and Surgery; Medicine and Surgery (Accelerated Programme)

### >Modern Languages

**Including:** Chinese Studies OR Japanese Studies; Linguistics with Chinese or Japanese; Linguistics with French; Linguistics with German; Linguistics with Spanish; Modern Languages; Modern Languages and Business Studies; Modern Languages and Linguistics; Modern Languages, Translation and Interpreting; Spanish, Portuguese and Latin American Studies; Combined Honours

### >Music

**Including:** Music; Contemporary and Popular Music; Folk and Traditional Music; Combined Honours

### >Nutrition and Dietetics

**Including:** Dietetics; Food and Human Nutrition; Nutrition with Food Marketing; Psychology and Nutrition

### >Pharmacy

**Including:** Pharmacy; Chemistry with Medicinal Chemistry

### >Philosophy

**Including:** Philosophy; Combined Honours

### >Physics

**Including:** Physics; Physics with Astrophysics; Theoretical Physics

### >Politics and International Relations

**Including:** Politics; International Relations; Politics and Economics; Politics and History; Politics and International Relations; Politics and Sociology; Combined Honours

### >Psychology

**Including:** Psychology; Psychology and Biology; Psychology and Mathematics; Psychology and Nutrition; Psychology and Sport and Exercise Science

### >Sociology

**Including:** Politics and Sociology; Sociology; Combined Honours

### >Speech and Language Sciences

**Including:** Speech and Language Therapy; Master of Speech and Language Sciences

### >Sport and Exercise Science

**Including:** Sport and Exercise Science; Psychology and Sport and Exercise Science

### >Urban Planning

**Including:** Urban Planning; Architecture and Urban Planning; Geography and Planning; Master of Planning





# How you apply

**We're here to support you on your journey to university – from choosing your degree to accepting an offer.**

## Our Application Hub

[Visit our Application Hub](#) for advice on every stage of the application process. Get tips on preparing for university and access resources to write a stand-out personal statement and submit a successful application.

## Apply to us

When you're ready to apply to us, you'll need to submit your application online through the [Universities and Colleges Admissions Service \(UCAS\)](#).

Quote our UCAS code for the course you want to apply for, as well as our name and institution code – NEWC and N21.

## Apply through an agent

International students often apply to us through an agent. Details of the agents we work with can be found [HERE](#).

Further advice about applying to us is available [HERE](#).

## Contextual offers for UK students

We consider every student's academic achievement in context, using the information you and your school/college provide on your UCAS form.

Examples of what we mean by context include: where you live and if that area has a low participation in higher education; your socio-economic background; participation in our pathway programmes; or if you have experienced time in care throughout your life.

Eligible applicants could receive a conditional offer from the University which is up to three A Level grades (or equivalent) lower than the typical offer for their undergraduate programme. **Find out more** [HERE](#).



## Fees and funding

You'll be charged a tuition fee for each year of your degree. The amount will depend on whether you're a UK or international/EU student and can be found in our course profiles [HERE](#).

UK students can apply for [UK government loans](#) to cover the full cost of their tuition and help towards their living costs.

If you're an international/EU student, you may be able to apply for industry sponsorship in your home country or funding from your own government.

We also invest millions in financial support for students who want to study with us, including:

- subject scholarships
- EU and international specific scholarships
- Sanctuary Scholarships for students from asylum-seeker and refugee backgrounds
- funding for students who live in Newcastle
- financial support for PARTNERS students
- International Family Discounts for international students with a close family member who is already studying with us or has graduated from Newcastle

**Find out more** [HERE](#).

## Visa and immigration requirements

If you're an international/EU student, our dedicated Visa Support team can help you with your visa or immigration status.

**Find out more** [HERE](#).

## Covid-19

The most up-to-date information on how we're supporting our students' academic experience is available [HERE](#).





# Explore Newcastle

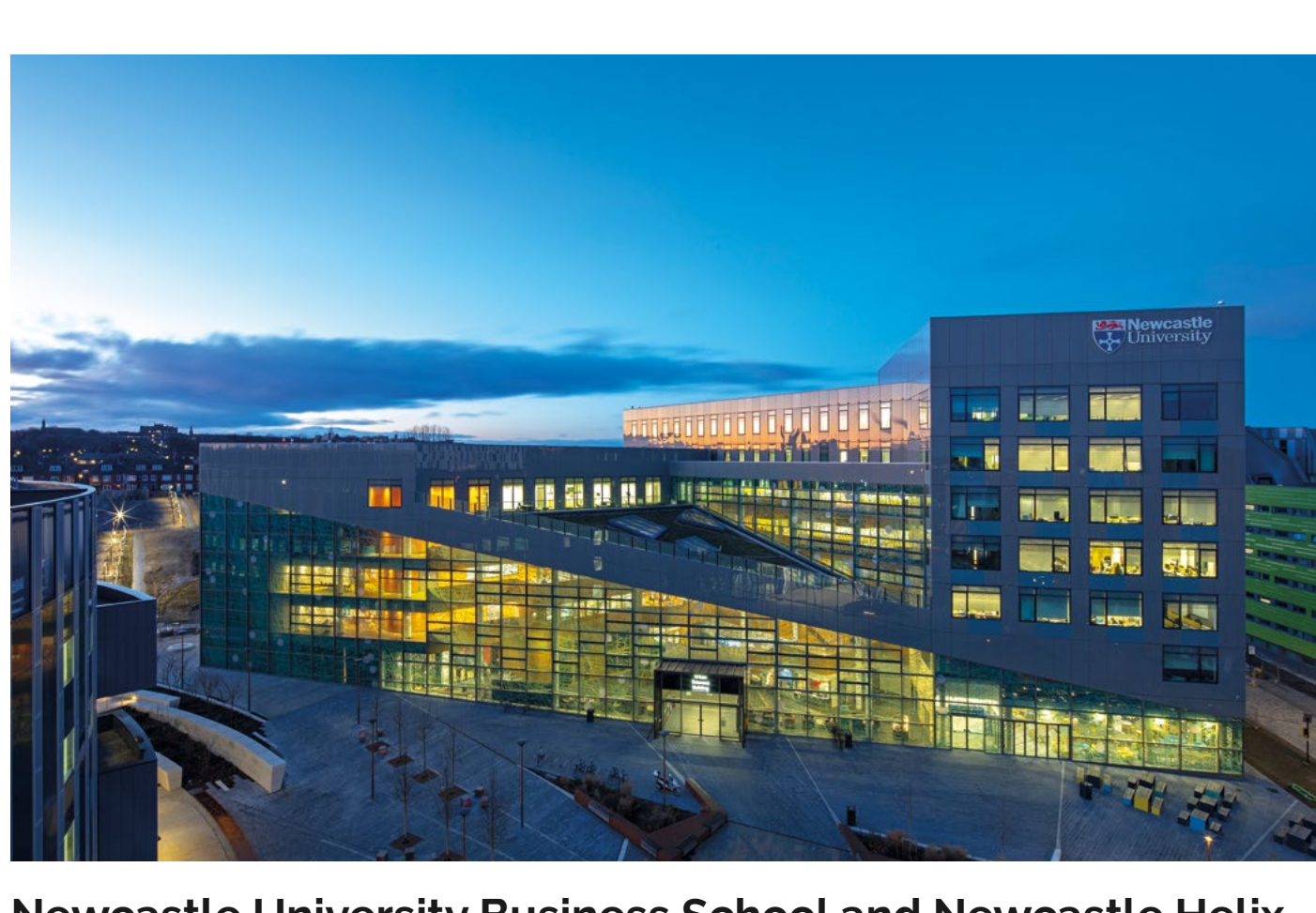
There's lots to discover in Newcastle...here's just a taste of what our friendly city has to offer.



Tyne Bridge, Gateshead Millennium Bridge



Quayside cafés, bars and restaurants



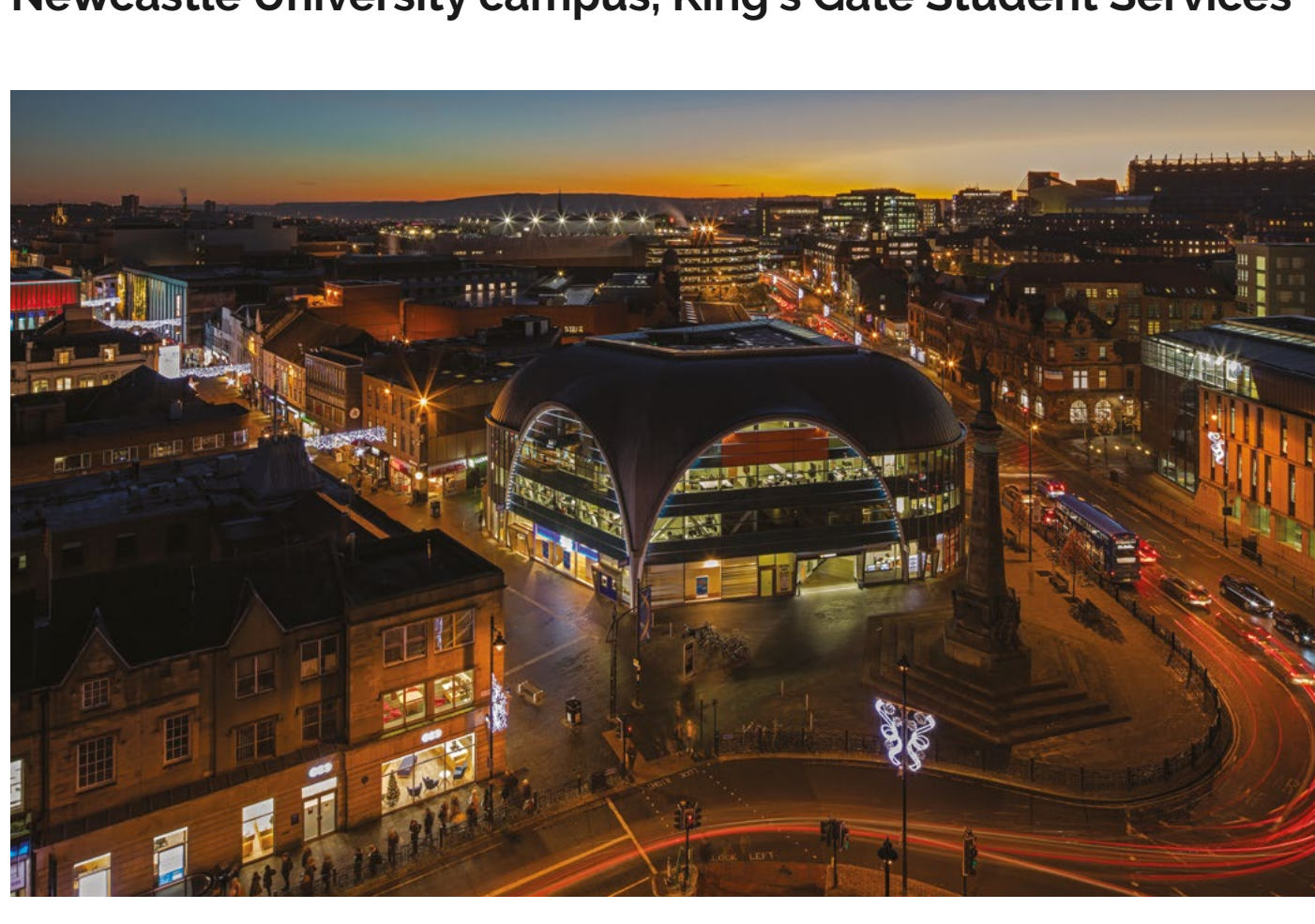
Newcastle University Business School and Newcastle Helix



Grainger Town (historic centre and market)



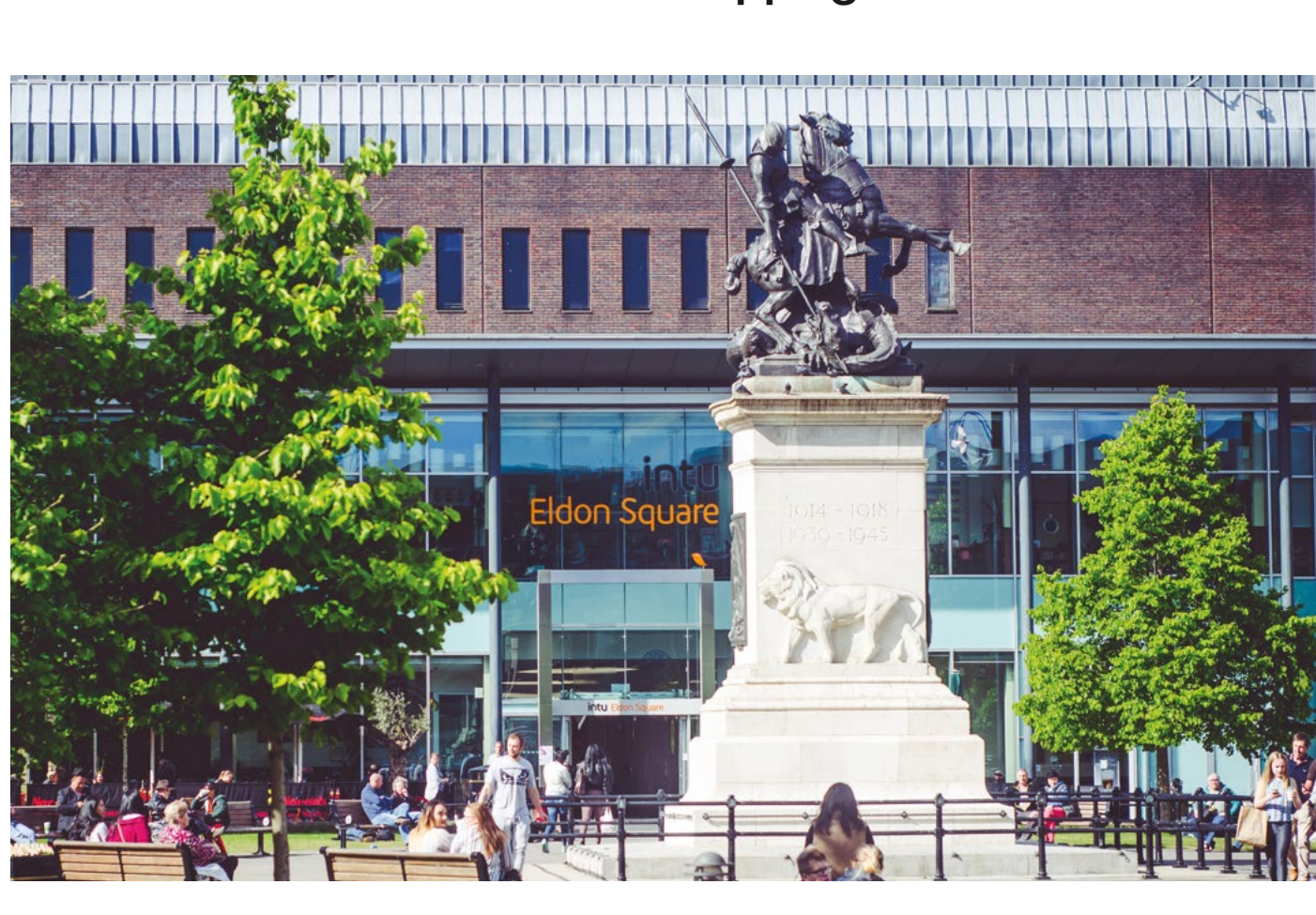
Newcastle University campus, King's Gate Student Services



Haymarket Metro Station



Northumberland Street (main shopping street)



Eldon Square shopping centre



St James' Park, Newcastle United's football stadium

## Want to explore more?

Take a virtual tour, or better still, join us on campus and discover for yourself what makes Newcastle and our safe city-centre campus special. **Find out more** [HERE](#).





# Closer than you think

**It's quick, easy and affordable to get to Newcastle – however you travel.**

Direct road and rail links to the rest of the UK, plus flights to domestic and world destinations from Newcastle International Airport, mean we really are closer than you think.

Find out how well connected we are [HERE](#).



## UK airports with direct flights to Newcastle

Aberdeen	50 minutes
Belfast	50 minutes
Bristol	1 hour
Dublin	1 hour
Exeter	1 hour 10 minutes
London Heathrow	1 hour
Newquay	1 hour 10 minutes
Southampton	1 hour



## International airports with direct flights to Newcastle

Amsterdam	1 hour 20 minutes
Dubai	6 hours 50 minutes
Paris	1 hour 50 minutes

### CITY

### Fastest journey times by train (trainline.com)

Birmingham	3 hours 30 minutes
Bristol	4 hours 50 minutes
Cardiff	5 hours 15 minutes
Edinburgh	1 hour 25 minutes
Leeds	1 hour 20 minutes
Liverpool	2 hours 50 minutes
London	2 hours 35 minutes
Manchester	2 hours 10 minutes
Sheffield	1 hour 45 minutes
York	55 minutes





# Disclaimers and acknowledgements

Although great care is taken in compiling this Undergraduate Guide, it is for the general guidance of prospective students only.

This publication is intended for those who are interested in applying for admission to the University in 2023 and is intended as advance publicity for information and guidance purposes only. The content of this publication does not form a contract between the University and a prospective student.

Details included are correct at the time of publication in February 2022. The most up-to-date and detailed source of information at any time is the [undergraduate website](#).

The matters covered by this publication are subject to change from time to time, both before and after a candidate's admission. The University reserves the right to make changes as reasonably necessary and unavoidable changes may on occasion have to be made, affecting the availability of degree programmes, subjects, modules and options within degree programmes, and of additional opportunities such as placements, field trips and exchange visits. The reasons for change could include, but are not limited to timetabling issues, changes in staff, requirements of programme-accrediting bodies, academic changes within subject areas, or due to minimum student numbers on a course.

The University makes all reasonable efforts to deliver the programmes of study and other services and facilities as described in its marketing material. However, it may be necessary to make changes to its provision in response to significant disruption, for example now that the UK has officially left the EU, or in response to Covid-19. The University is committed to delivering learning outcomes notwithstanding any necessary changes to mode of delivery. The latest information is available [HERE](#).

Full details of the University's terms and conditions, including reference to all relevant policies, procedures, regulations and information provision are available [HERE](#).

The University is not responsible for the content of any websites which do not form part of the Newcastle University domain ([www.ncl.ac.uk](https://www.ncl.ac.uk)) and whose addresses are given in this publication.

## Equal opportunities

The University's Equality Strategy is our public declaration of our commitment to develop a fully inclusive University community, which recruits and retains talented staff and students from all sectors of society equally. Find out more [HERE](#).

## Alternative formats

For information in alternative formats on any of our courses and on student life in Newcastle, please contact Student Services [HERE](#).

The University is committed to making our website, and the material provided on it, as accessible as possible. **Find out more** [HERE](#).

## Photography

C Bishop; High Level Photography; J Donoghue; P Haswell; G Peacock; L Scott-Robinson; A Wallace

© Newcastle University, 2022. The University of Newcastle upon Tyne trading as Newcastle University.



Explore our degrees [HERE](#)

Chat to us live [HERE](#)

Talk to a student [HERE](#)

Read our blog [HERE](#)

## Contact us

General enquiries: [HERE](#)

International enquiries: [HERE](#)

(+44) 191 208 3333



@newcastleuniversity



@studentsNCL



newcastleuni



@newcastleuni



newcastleuni



weibo.com/UKNCL



<http://i.youku.com/i/UMTIwMDAzNzY3NjQ=>