



*LIBRARY DEMENTIA SERVICES:
HOW TO MEET THE NEEDS OF THE
ALZHEIMER'S COMMUNITY*

Timothy J. Dickey, Ph.D.

Niche Academy

November 10, 2021

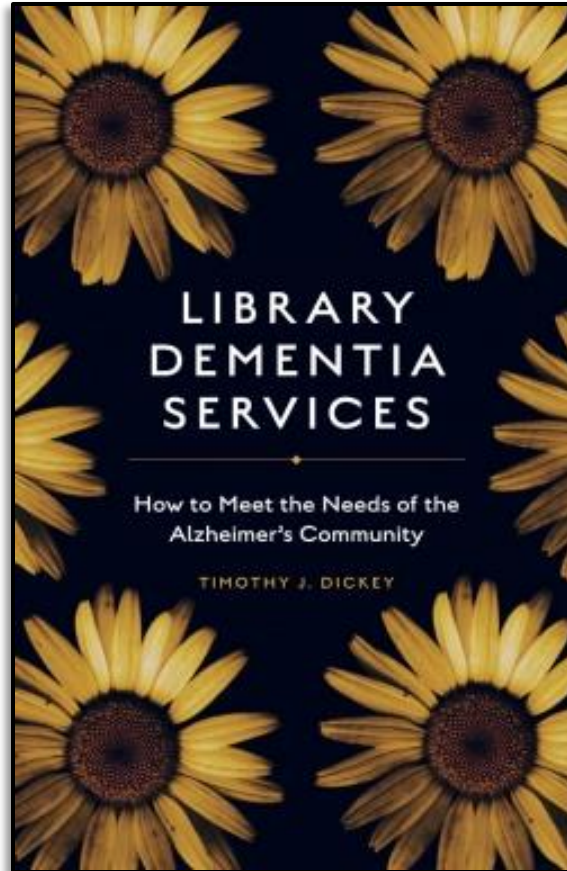
WELCOME!

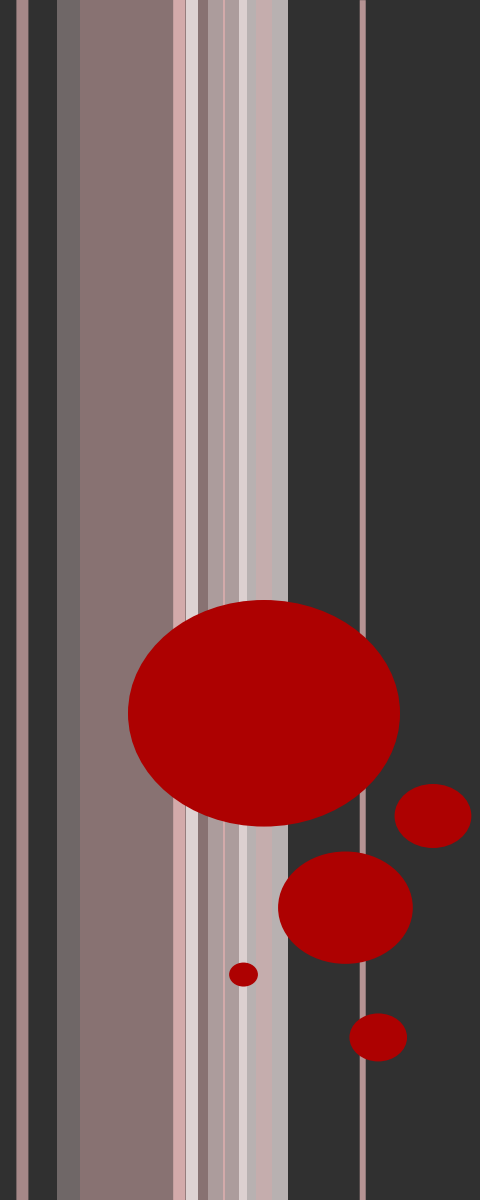


Timothy J. Dickey, Ph.D., MLIS

- Adult Services Librarian,
Columbus (Ohio)
Metropolitan Library
- iSchool Faculty, Kent State,
San José State, & Catholic
University

LIBRARY DEMENTIA SERVICES:



The left side of the slide features a vertical stack of decorative elements. From top to bottom, there are several thin, light-colored vertical stripes, followed by a larger, semi-transparent grey vertical bar. Below these are five solid red circles of varying sizes, arranged in a descending, staggered pattern from top-left to bottom-right. The main title text is positioned to the right of these elements.

**ALZHEIMER'S DISEASE,
RELATED DEMENTIAS, AND
CAREGIVERS**

PERSONS WITH DEMENTIA (PWD) – A QUICK OVERVIEW



Image: [CCL](#), Jean-Baptiste Duret @Flickr.com

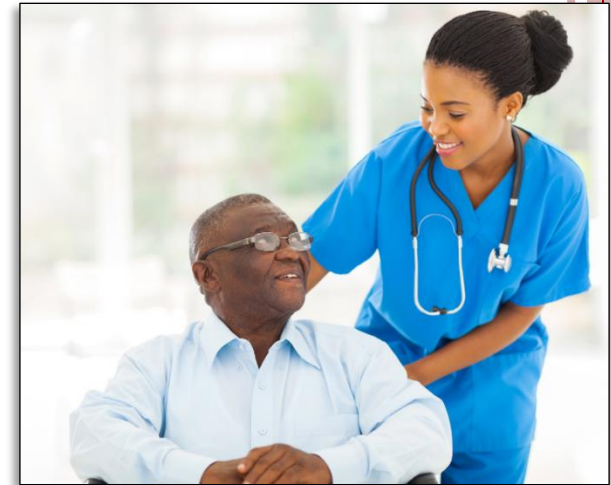
- Dementia: umbrella term
- Global epidemic
- Spectrum of symptoms, often in stages
- Highly individual cases
- Pandemic effects

- No pharmacological cure for Alzheimer's Dementia

HEALTH DISPARITIES AND PWD

- Higher dementia incidence, African-Americans and Latinx
- Co-existing medical conditions
- Genetic & societal risk factors
- Under-diagnoses
- Access to information
- Access to care
- Under-representation in clinical trials
- Caregiver burdens

.....!!



THE CAREGIVER COMMUNITY



POSITIVE THERAPIES FOR PWD

“Non-pharmacological interventions”

- Healthy lifestyle choices
 - Diet & exercise
 - Nutrition
- Mental Stimulation
 - Brain training and puzzles
 - Reading
 - Creative engagement
 - Lifelong learning
- Social Stimulation
 - Social networks
 - Connections to culture



... NEW FRONTIERS FOR LIBRARIES



The left side of the slide features a series of vertical stripes in shades of grey and white, and several red circles of varying sizes arranged in a descending pattern.

ALZHEIMER'S DEMENTIA AND LIBRARY CUSTOMER SERVICE

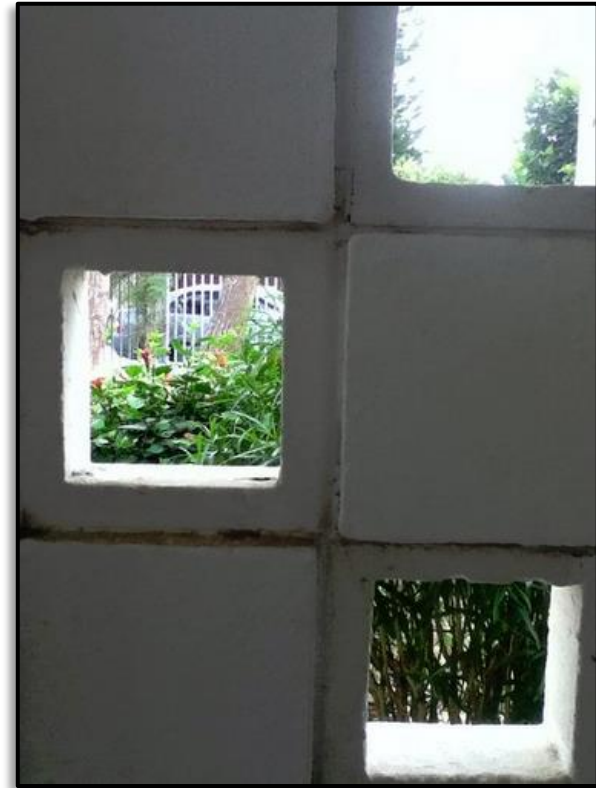
WARNING SIGNS

1. Memory loss
2. Challenges in planning
3. Difficulty completing tasks
4. Confusion with time/ place
5. Spatio-visual difficulty
6. Problems with words
7. Misplacing things
8. Decreased judgment
9. Withdrawal
10. Changes in mood



SPECIFIC COMMUNICATION PATTERNS AND CHALLENGES

- Difficulty finding words
- Describing, not naming
- Repeating familiar words
- Losing a train of thought
- Reverting to native language
- Speaking less often
- Relying on gestures



BEST PRACTICES FOR COMMUNICATION AND CUSTOMER SERVICE

- Make eye contact
- Get the person's attention before speaking
- Speak clearly and slowly
- Pay attention to body language
- Use simple language and repetition, to avoid confusion
- Use simple yes or no questions and
- allow them time to answer
- Include everyday topics in your conversation, such as the weather or familiar objects or subjects



Be calm, supportive, and positive!

DEMENTIA-FRIENDLY STAFF



Dementia Friendly Libraries

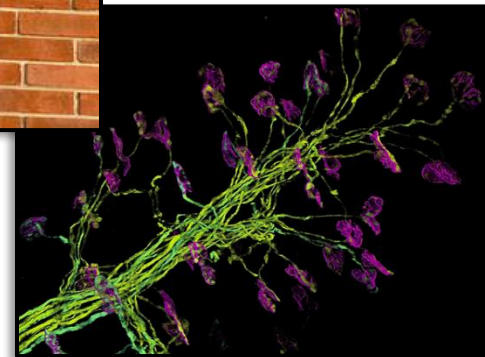
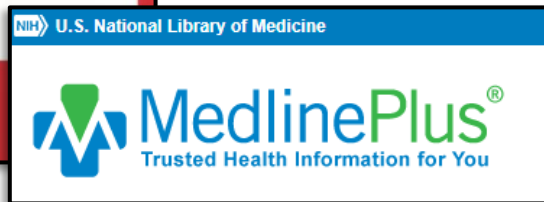
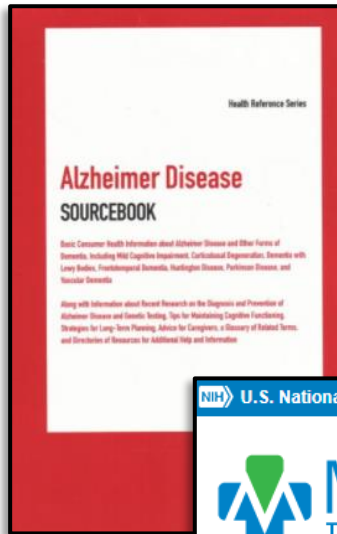
Libraries are respected community institutions and vital to a dementia friendly community because they provide access to resources, services, and programs for people living with dementia and their families.



The left side of the slide features a series of vertical stripes in shades of grey and white, and several red circles of varying sizes arranged in a descending pattern.

ALZHEIMER'S DEMENTIA AND
LIBRARY REFERENCE &
INFORMATION SERVICES

MEDICAL INFORMATION NEEDS



FINANCIAL INFORMATION NEEDS



AARP MENU [Join](#) [Renew](#) [Help](#) [Member Benefits](#)

Money

[Scams & Fraud](#) · [Living on a Budget](#) · [Managing Debt](#) · [Saving & Investing](#) · [Taxes](#) · [Insurance](#)

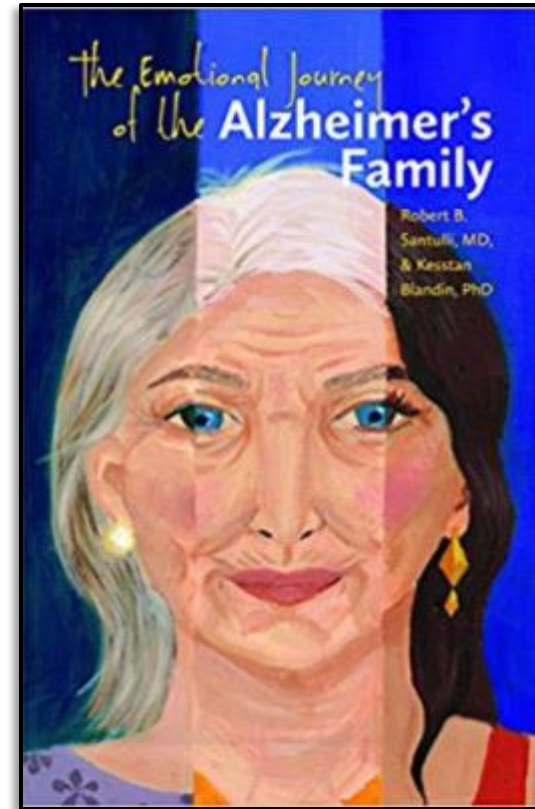
LEGAL & ETHICAL INFORMATION NEEDS



EMOTIONAL INFORMATION

- Understanding
- Compassion
- Communication

- Appropriate materials
- Appropriate programming



The left side of the slide features a vertical stack of decorative elements: a wide, light-colored gradient bar, followed by several thin, parallel vertical lines in shades of white and light gray, and a series of five solid red circles of varying sizes arranged in a descending, staggered pattern.

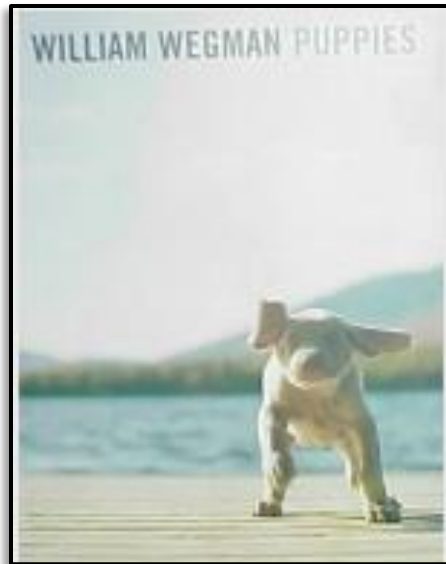
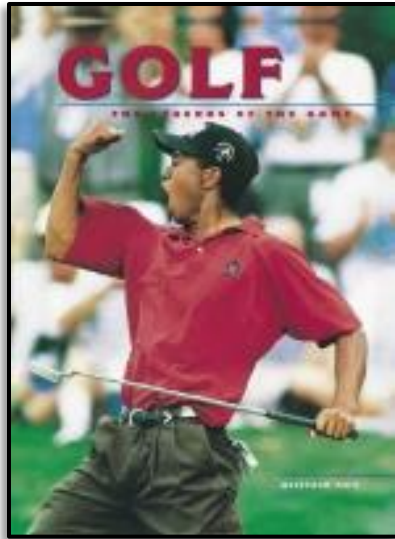
ALZHEIMER'S DEMENTIA AND COLLECTION DEVELOPMENT

USER-CENTERED COLLECTION DEVELOPMENT & READING WITH DEMENTIA

- Reading does not disappear with dementia!
- Positive therapies:
 - Active participation
 - Learning new information
 - Hobby reading
 - (even “The Classics”)
 - Shared reading



MENTAL STIMULATION & COLLECTIONS



SOCIAL INTERACTION



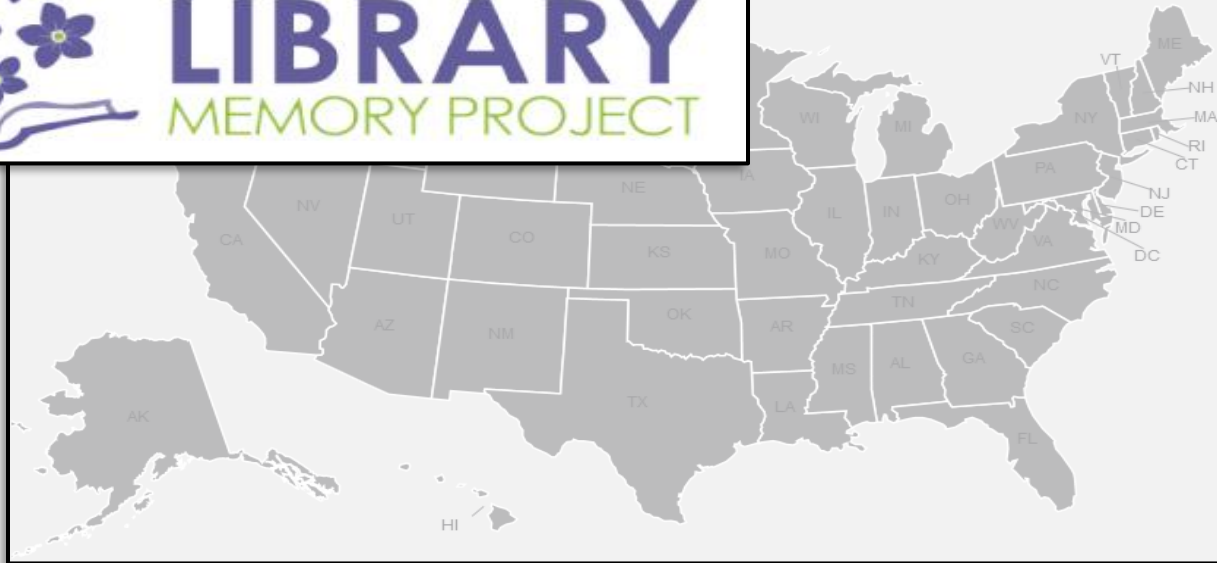
The left side of the slide features a decorative vertical band with several thin, parallel stripes in shades of grey and white. To the right of these stripes are five solid red circles of varying sizes, arranged in a descending, slightly curved pattern from top to bottom.

LIBRARY PROGRAMMING FOR ALZHEIMER'S AND RELATED DEMENTIAS

MEMORY CAFÉS

Memory Cafe Directory

Find a Memory Cafe Near You!



TALES & TRAVEL



Toolkit for Librarians



MENTAL STIMULATION & MUSIC



- Therapeutic effects
- Music & Memory™
- Concerts or sing-a-long events



<https://www.youtube.com/watch?v=fyZQf0p73QM;>
<http://www.MusicandMemory.org>

ART & MUSEUM PROGRAMS



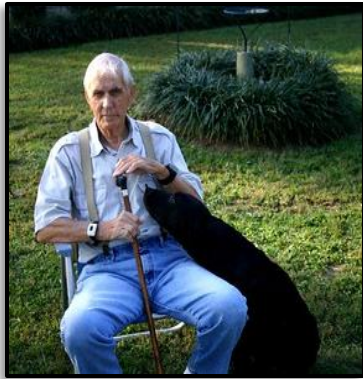
- Therapeutic effects
- Reminiscence kits
- Museum programs
- Alzheimer's Poetry Project
- Storytelling, dance, drama...

GAMES & TECHNOLOGY

- Health information games
- Games and puzzles
- Assistive technology
- Sensory spaces
- Mixed reality



OTHER PROGRAM IDEAS



- Memory Connection Centers
 - Cf. Homework Help Centers
- Meditation programs
 - Therapeutic effects
- Pets & stuffed animals
- Etc. ...



RESOURCES: PWD & LIBRARY SERVICES

Dickey, T. J. (2020). *Library dementia services: How to meet the needs of the Alzheimer's community*. Bingley, UK: Emerald Publishing.

RUSA, *Guidelines for Library & Information Services to Older Adults* (2017)

IFLA, *Guidelines for Library Services to Persons with Dementia* (2007)

ALA-ODLOS, *Interest Group for Library Services for Dementia/Alzheimer's*

Bibliographies for Libraries:

Alzheimer's Fiction and Memoirs Bibliography

The Science of Alzheimer's Bibliography

Alzheimer's Caregivers Bibliography

Alzheimer's and Brain Awareness Month 2021

Model Programs:

Tales & Travel Memories

Memory Cafes

Music & Memory

MOMA Alzheimer's Project



THANK YOU!

Timothy J. Dickey

tdickey@columbuslibrary.org

<http://www.linkedin.com/in/timothyjdickey>